



Northwest Regional Planning Commission

155 Lake Street, St. Albans, VT 05478

Phone: 802-524-5958/800-564-5958 Fax: 802-527-2948 www.nrpcvt.com

Inside This Issue



Save Your Shoreline 1



NRPC to Kick Off "Healthy, Vital & Strong Communities in Northwest Vermont" 2



NRPC Staff 2



Brownfields Area Wide Planning in Richford 3



Regional Energy Committee Seeks Members 4



List of Commissioners 4



Save Your Shoreline!

Did your property experience shoreline loss from the Spring 2011 floods? Technical Assistance and Grants are available to help property owners prevent and solve erosion problems on Lake Champlain!

Northwest Regional Planning Commission, in partnership with VT Agency of Natural Resources announces the 2012 Shoreline Stabilization Mini-Grants Program providing funding to Franklin County and Grand Isle County property owners for site visits, technical assistance and project implementation.



Shoreline Handbook available:
www.nrpcvt.com/Reports/ShorelineHandbook.pdf

Applications are available NOW for Phase 1, which can provide technical assistance valued up to \$5,000 for a site visit by a qualified professional and design plans to help stabilize your shoreline. Applications will be due February 20, 2012.

Successful grants will protect and enhance Lake Champlain's shoreline in a way that restores it to a more natural state, improves water quality, restores habitat and educates others by demonstrating low impact, vegetated techniques.

Phase 1 Technical Assistance is available now!

Phase 2 Project Implementation Grants will be available in Summer 2012.

Interested? Questions?
Contact: Katelin Brewer-Colie
kbrewercolie@nrpcvt.com or
(802) 524-5958

Applications are available NOW:
www.nrpcvt.com/shoreline.html or
(802) 524-5958



Swanton camp's eroded shoreline

NRPC to kick off “Healthy, Vital and Strong Communities in Northwest Vermont”

The first Steering Committee meeting for the “Healthy, Vital and Strong Communities in Northwest Vermont” project funded by HUD Sustainable Communities will be held at NRPC on February 7th from 10:00am –12:00pm. The meeting is open to the public. The project will take up a variety of issues between 2012 and 2014 to build a more sustainable region, which is made up of healthy economic, healthy physical and healthy social communities. The grant was one of 12% that were funded out of over 500 applications submitted nationally.

The grant’s main focus will be to improve economic opportunity and community health. These areas need specific attention because the Northwest region has a lower median household income than the rest of Vermont, includes the fastest aging county in Vermont (Grand Isle Co.), and has a high rate of chronic health problems (40%). It is important for the region to think about these typically segregated areas together, as a person’s socioeconomic status is one of the strongest predictors of his or her health (Vermont Department of Health).

As the leader of a regional consortium, NRPC will work directly with community-based organizations and other regional partners such as local governments to gather information and develop strategies for workforce development, career mentorship, substance abuse prevention, to address childcare shortages, ensure that the region is safe and inviting for all transportation modes including walking and biking, and increase physical activity. Small grants will be available to local organizations and municipalities for program implementation.

Public participation is essential to this community-based project. Steering committee meetings will be held on a regular basis and will be open to the public. Open houses will take place throughout the region to engage those who cannot easily travel across the large geographic area. Local public libraries will help to reach out to the entire community in person and using digital technology. Look for meeting announcements in this newsletter.

The end result will be a healthier, more sustainable northwest Vermont region with a plan that puts health and economic development on the same footing as transportation and land use and that strengthens the physical health, economic health and social connections of our communities. Questions may be addressed to Catherine Dimitruk at (802) 524-5958, cdimitruk@nrpcvt.com.

NRPC Staff

Executive Director
Catherine Dimitruk

Assistant Director
Bethany Remmers

Office Administrator
Amy Adams

Senior Planner
Greta Brunswick

Senior Planner
Shaun Coleman

Emergency Planner
Allison Stori

Regional Planner
Katelin Brewer-Colie

Regional Planner
Kevin Schwenzfeier

GIS Technician
Emily Hubbard



Brownfields Area Wide Planning in Richford

The Northwest Region Brownfield Program (NRBP) is starting an exciting new project — an area wide revitalization plan and implementation program focused on key brownfields sites in the designated downtown of Richford! In cooperation with the Richford Economic Advancement Corporation and the Vermont Department of Environmental Conservation, the NRBP will procure a consulting team to complete the project. The study is located at the heart of Richford Vermont's downtown measuring approximately 26 acres with 53 individual parcels.

Brownfields are...Properties where expansion or redevelopment is complicated by real or perceived environmental contamination, and are abandoned, idled or under used with potential to be redeveloped or used more intensively.

What is brownfields area wide planning?

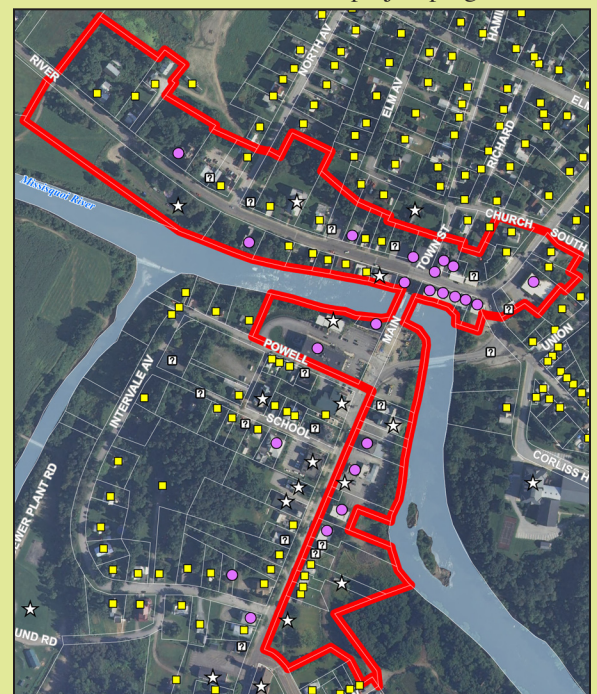
- ☛ Looks at an entire neighborhood or corridor of land to plan for the revitalization of the whole area.
- ☛ Recognizes that revitalization of an area surrounding a brownfields property is just as critical to its reuse as assessment, cleanup and/or redevelopment of that one property.

What will the proposed area wide planning project in Richford do?

- ☛ Review existing environmental conditions and market conditions relating to the re-use of brownfields within the study area.
- ☛ Engage neighborhood residents and other stakeholders to develop a vision for re-use of key brownfield sites within the study area.
- ☛ Develop area-wide and site-specific strategies for revitalization of the study area.
- ☛ Develop a prioritized area wide and site specific implementation plan.

Study Area Boundaries

The map below shows preliminary boundaries, which will be refined as the project progresses.



How will the project be funded and managed?

- ☛ The project will be funded by the Northwest Region Brownfield Program's Assessment Grant from the Environmental Protection Agency.
- ☛ The project will be managed by the Northwest Region Brownfield Program in conjunction with the Project Team and a Stakeholders Group.
- ☛ The project team will select and manage a consultant team to complete the project, which will likely consist of an environmental firm, an economic research firm, and a planning firm.
- ☛ The Project Team consists of:
 - ◆ Greta Brunswick, Senior Planner, Northwest Regional Planning Commission
 - ◆ Patricia Coppolino, Brownfield Program Coordinator, Vermont Department of Environmental Conservation
 - ◆ Albert Perry, Bill McGroarty, and Joe Pollender, Richford Economic Advancement Corporation
- ☛ The Project Stakeholders Group will be selected by the Project Team and consist of a cross section of community stakeholders.

Please contact Greta Brunswick at (802) 524-5958 or gbrunswick@nrpcvt.com for more information.

Northwest Regional Board of Commissioners

Alburgh Town:	Terry Tatro Barbara Baker
Alburgh Village:	Andrea Beaderstadt One Vacant Seat
Bakersfield:	Nancy Hunt Dennis DeBevec
Berkshire:	Claude Charron Richard Ross
Enosburg Falls:	Richard Roberge Michael Manahan
Enosburgh:	Ronald Duso Lloyd Touchette
Fairfax:	Randy Devine Colleen Steen
Fairfield:	Marilyn Savoy Jason Booth
Fletcher:	Bruce Douglas One Vacant Seat
Franklin:	Doug Clark Clark Hubbard
Georgia:	Jerry Baitz Kirk Waite
Grand Isle:	Edwin Gelinus David Borthwick-Leslie
Highgate:	Pete Paquette Tom Racine
Isle La Motte:	Sylvia Jensen Paul Hinman
Montgomery:	Barry Kade Darlene Marrier
North Hero:	Vacant Seat Vacant Seat
Richford:	Melissa Wells Harold Foote
St Albans City:	Jeff Young Lazarus Scangas
St Albans Town:	John Gray Paul Larner
Sheldon:	Patrick Howrigan Greg Stebbins
South Hero:	Michael Guernsey Bob Buermann
Swanton Town:	Harold Garrett Robert Manning
Swanton Village:	Christopher Leach Neal Speer

Regional Energy Committee Seeks Members

Individuals with knowledge or experience with energy planning or simply an interest and commitment to the topic are encouraged to attend. Members of the committee will be expected to attend 4-6 meetings each year; meetings are held in the evening.

PURPOSE: To assist with NRPC's energy planning program, to act as a liaison between local communities and the various stakeholders in energy planning, and to provide local and regional input regarding energy issues important to the region. The Energy Committee serves in an advisory capacity to the Board of Commissioners.

MEMBERSHIP: Each municipality is invited to appoint a member. The energy committee will invite up to five other members who have particular knowledge or expertise in energy and/or represent related interest groups.

Municipalities that have not yet appointed a representative to the Regional Energy Committee are encouraged to attend a meeting or to send potential representatives who are interested in serving on the Committee. For more information or to apply to be a representative please contact Allison Stori at astori@nrpcvt.com or (802) 524-5958.



155 Lake Street
Saint Albans, VT 05478