

# Agricultural & Forest Soils Town of Bakersfield

- Soil Features**
- Prime Agricultural Soils
  - Statewide Soils
  - Local Soils
  - Prime Forest Soils



Vermont Coordinate System  
Transverse Mercator, NAD 83.  
For planning purposes only.

Prepared by:  
Northwest RPC  
75 Fairfield Street  
St. Albans, VT 05428  
(802) 524-5958  
www.nrpcvt.com  
February, 2018.

Data Sources: All map features derived from VGIS digital coverages. North arrow on map refers to Grid North.





# Archaeological & Historic Sites Kings Hill Community, Town of Bakersfield

1. Timothy and Betsy Carroll in 1857, CC Burton in 1871
2. N Bessey in 1857, CC Burton in 1871
3. Ashael Wells in 1857 and 1871
4. L Wells in 1857 and 1871
5. O Flood in 1871
6. District #9 Schoolhouse in 1857 and 1871
7. P Leach in 1871 Map
8. WR Parker in 1871 Map
9. A Holt in 1871 Map
10. Sawmill in 1857 and T. Riley's Sawmill in 1871
11. Sinnott in 1857 and 1871
12. D. Gray in 1857 and 1871

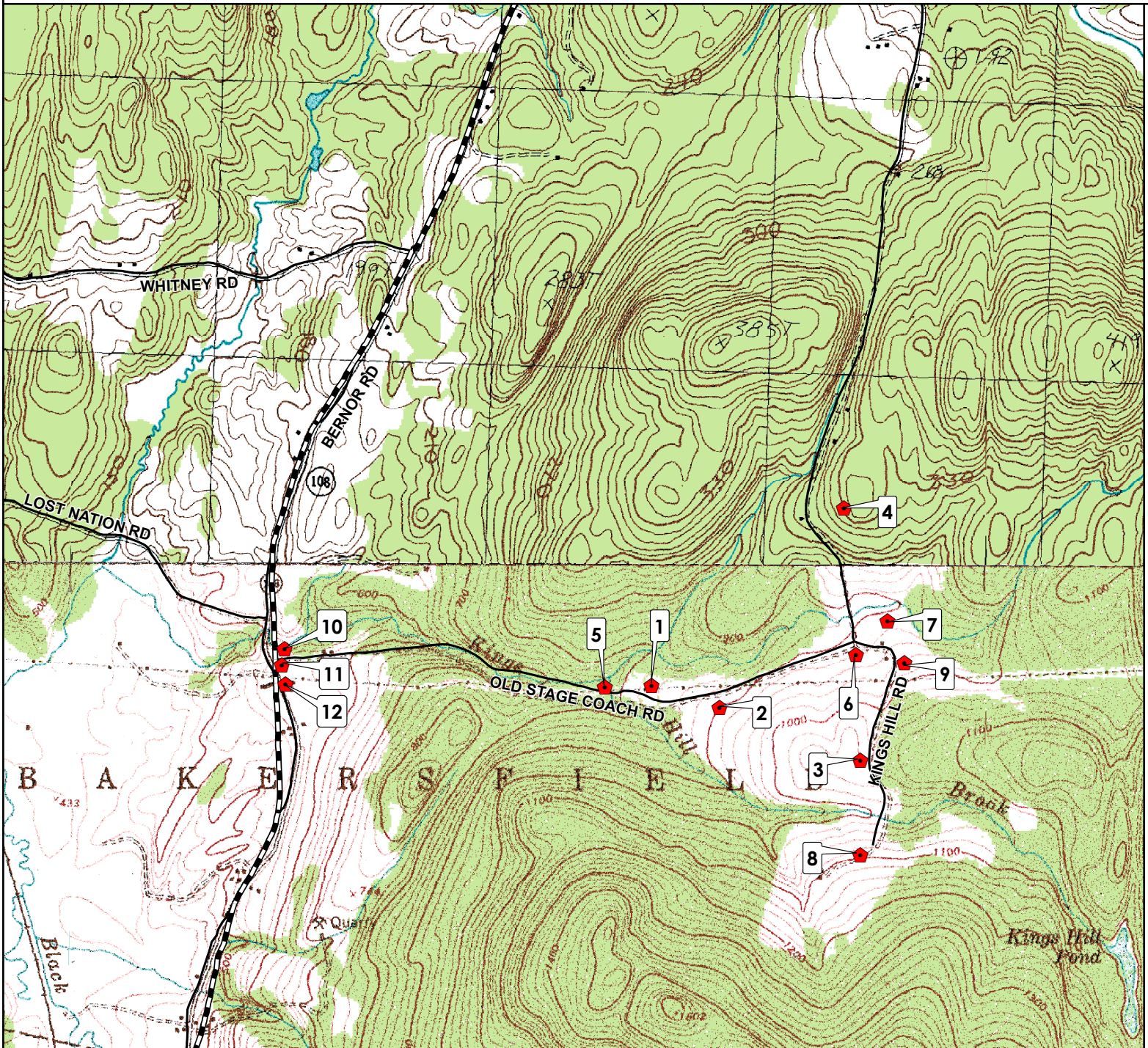
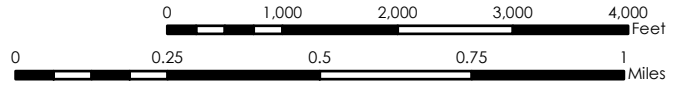
 Archaeological or Historic Site



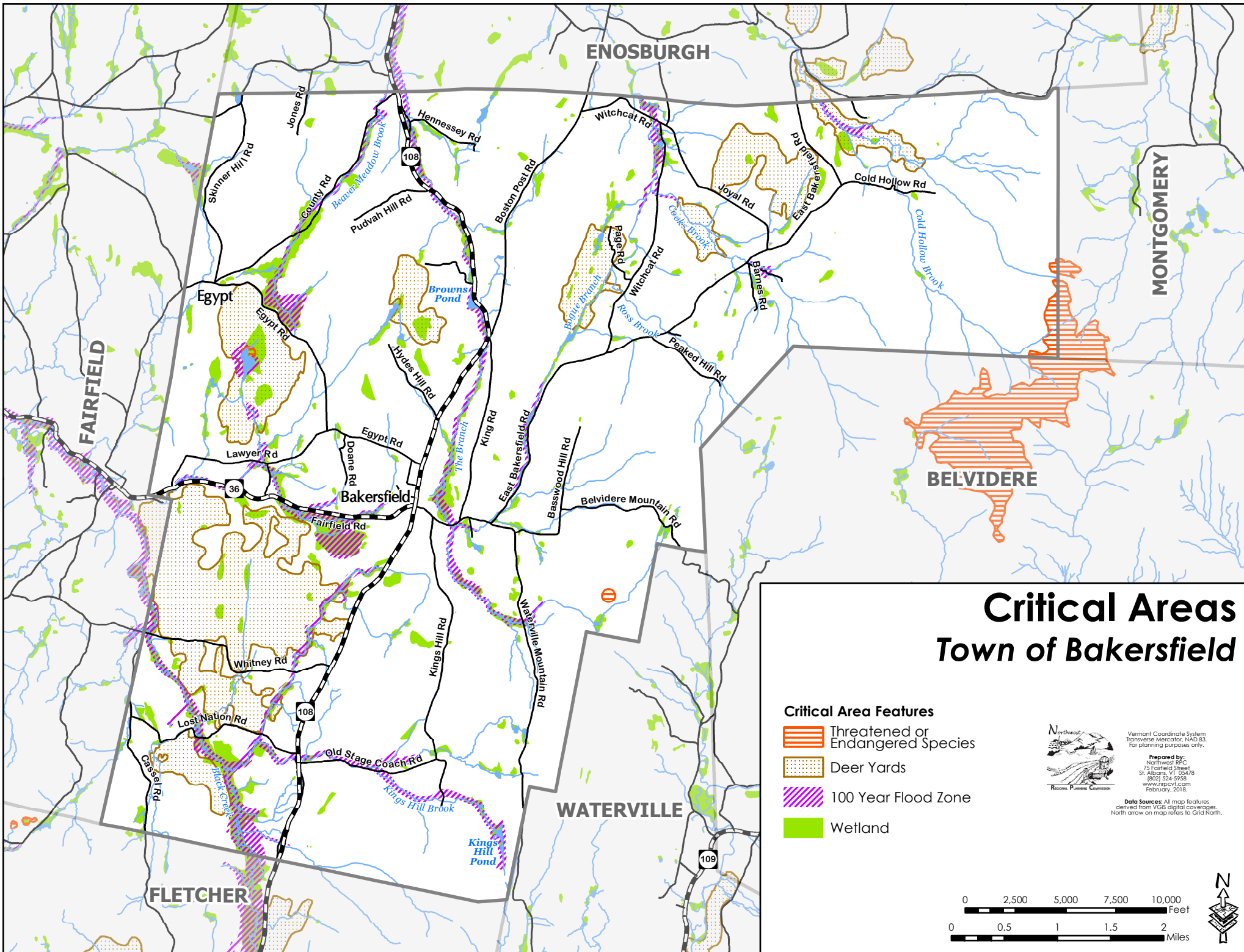
Vermont Coordinate System  
Transverse Mercator, NAD 83.  
For planning purposes only.

Prepared by:  
Northwest 89° C  
75 Fairfield Street  
St. Albans, VT 05478  
(802) 524-5958  
www.rpcvt.com  
February, 2018.

Data Sources: All map features  
derived from VGIS digital coverages.  
North arrow on map refers to Grid North.







# Critical Areas Town of Bakersfield

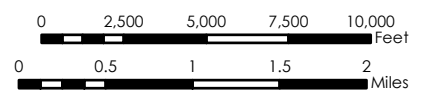
- Critical Area Features**
-  Threatened or Endangered Species
  -  Deer Yards
  -  100 Year Flood Zone
  -  Wetland

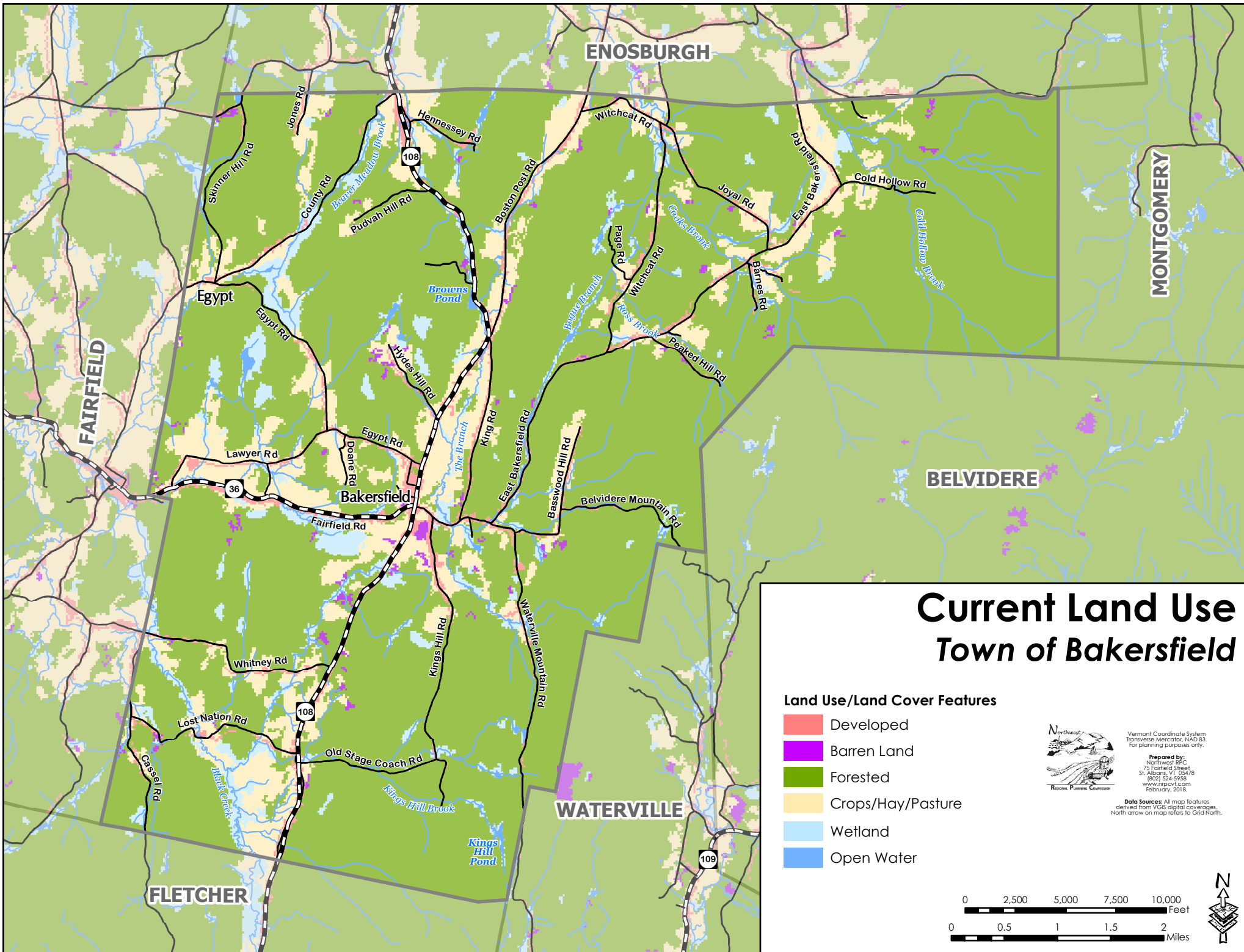


Vermont Coordinate System  
Transverse Mercator, NAD 83.  
For planning purposes only.

Prepared by:  
Northwest RPC  
75 Fairfield Street  
St. Albans, VT 05478  
(802) 524-5958  
www.nrpcvt.com  
February, 2018.

Data Sources: All map features derived from VGIS digital coverages. North arrow on map refers to Grid North.





# Current Land Use Town of Bakersfield

## Land Use/Land Cover Features

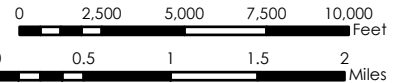
- Developed
- Barren Land
- Forested
- Crops/Hay/Pasture
- Wetland
- Open Water



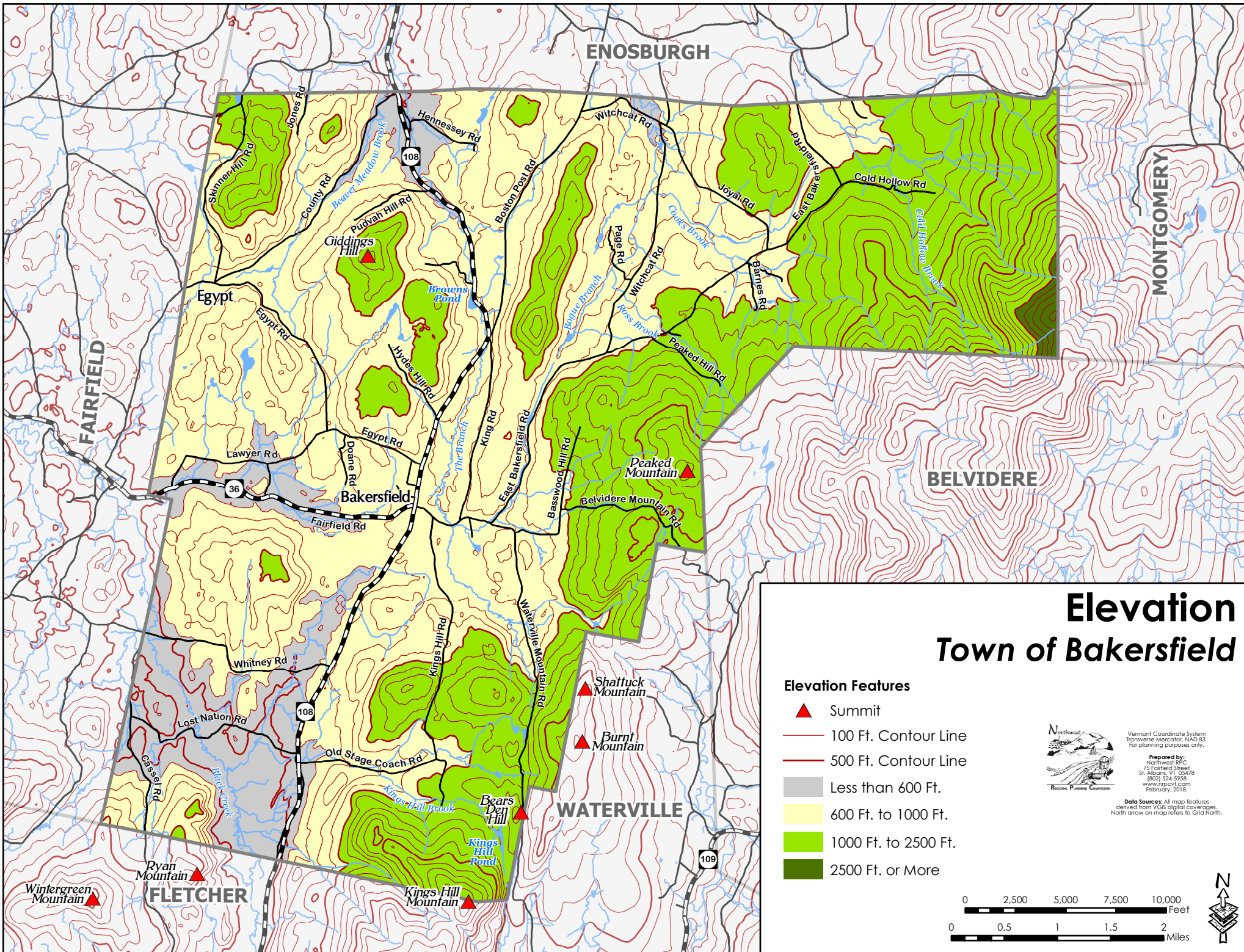
Vermont Coordinate System  
Transverse Mercator, NAD 83.  
For planning purposes only.

Prepared by:  
Northwest RPC  
75 Fairfield Street  
St. Albans, VT 05428  
(802) 524-9958  
www.nrpcvt.com  
February, 2018.

Data Sources: All map features derived from VGIS digital coverages. North arrow on map refers to Grid North.














# Elevation Town of Bakersfield

## Elevation Features

-  Summit
-  100 Ft. Contour Line
-  500 Ft. Contour Line
-  Less than 600 Ft.
-  600 Ft. to 1000 Ft.
-  1000 Ft. to 2500 Ft.
-  2500 Ft. or More

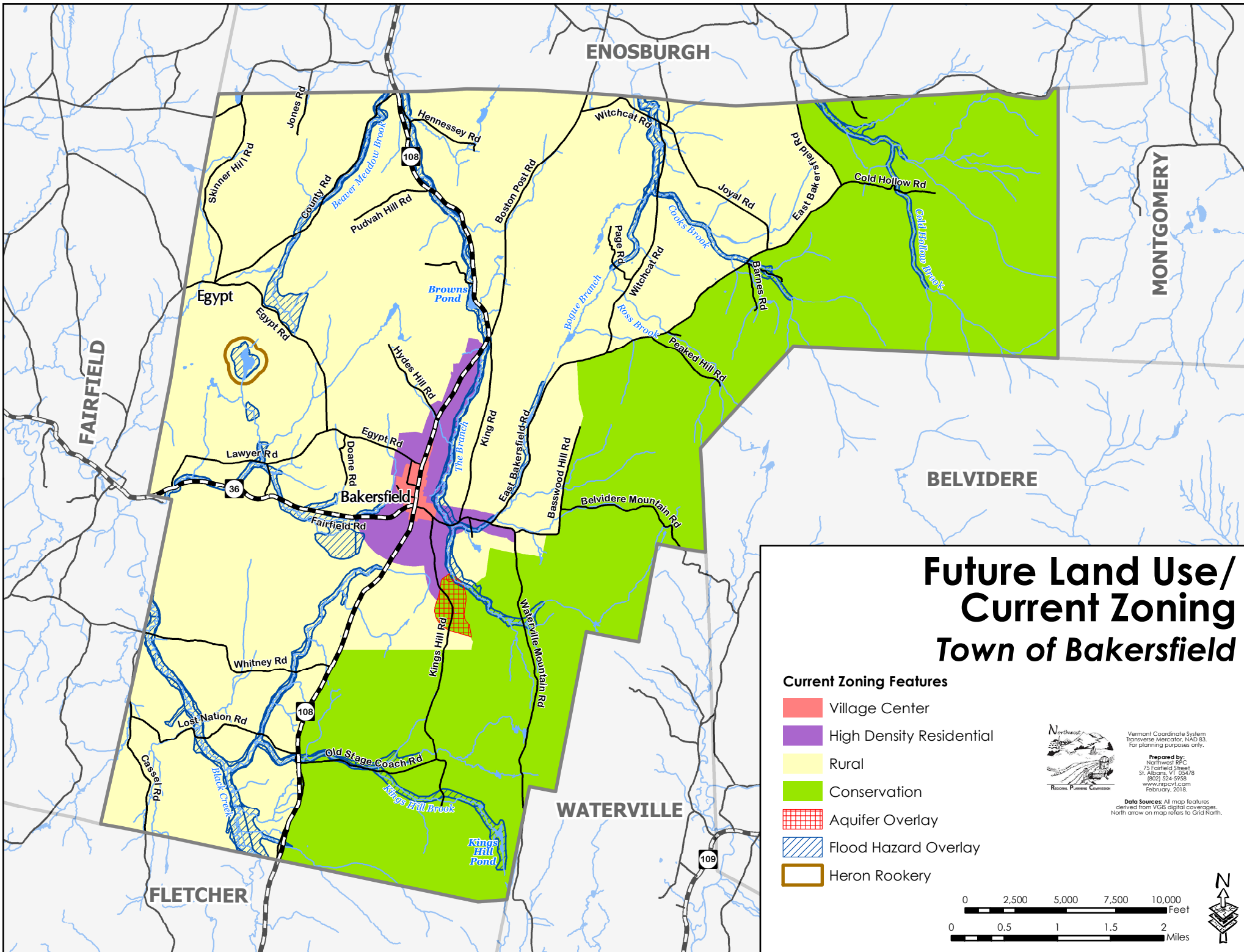


Vermont Coordinate System  
Transverse Mercator, NAD 83.  
For planning purposes only.

Prepared by:  
Northwest RPC  
75 Fairfield Street  
St. Albans, VT 05478  
(802) 524-9958  
www.nrpcvt.com  
February, 2018.

Data Sources: All map features derived from VGIS digital coverages. North arrow on map refers to Grid North.





# Future Land Use/ Current Zoning Town of Bakersfield

## Current Zoning Features

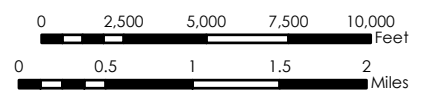
- Village Center
- High Density Residential
- Rural
- Conservation
- Aquifer Overlay
- Flood Hazard Overlay
- Heron Rookery



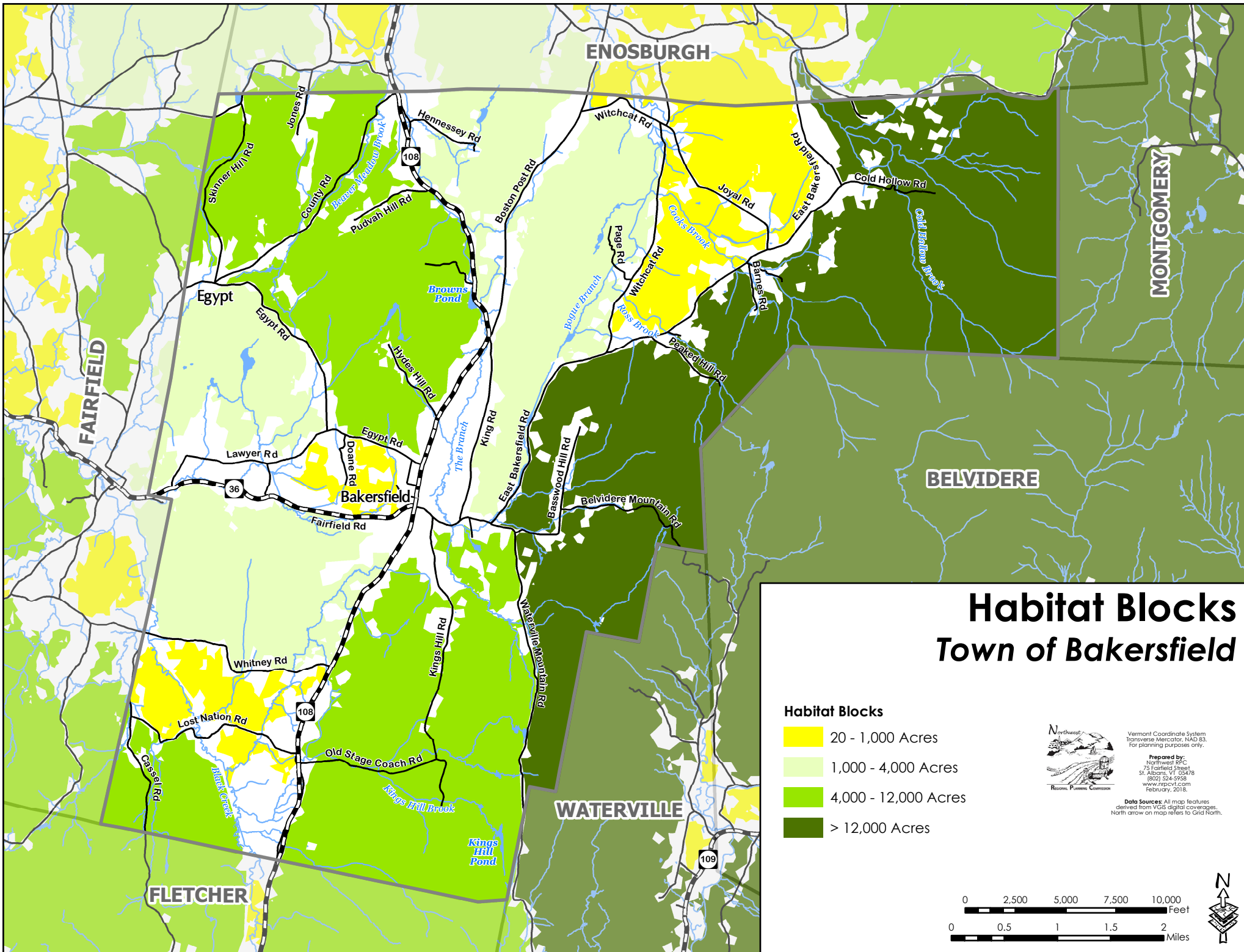
Vermont Coordinate System  
Transverse Mercator, NAD 83.  
For planning purposes only.

Prepared by:  
Northwest RPC  
75 Fairfield Street  
St. Albans, VT 05478  
(802) 524-5958  
www.nrpcvt.com  
February, 2018.

Data Sources: All map features derived from VGIS digital coverages. North arrow on map refers to Grid North.







# Habitat Blocks Town of Bakersfield

## Habitat Blocks

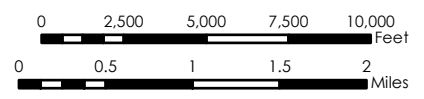
- 20 - 1,000 Acres
- 1,000 - 4,000 Acres
- 4,000 - 12,000 Acres
- > 12,000 Acres

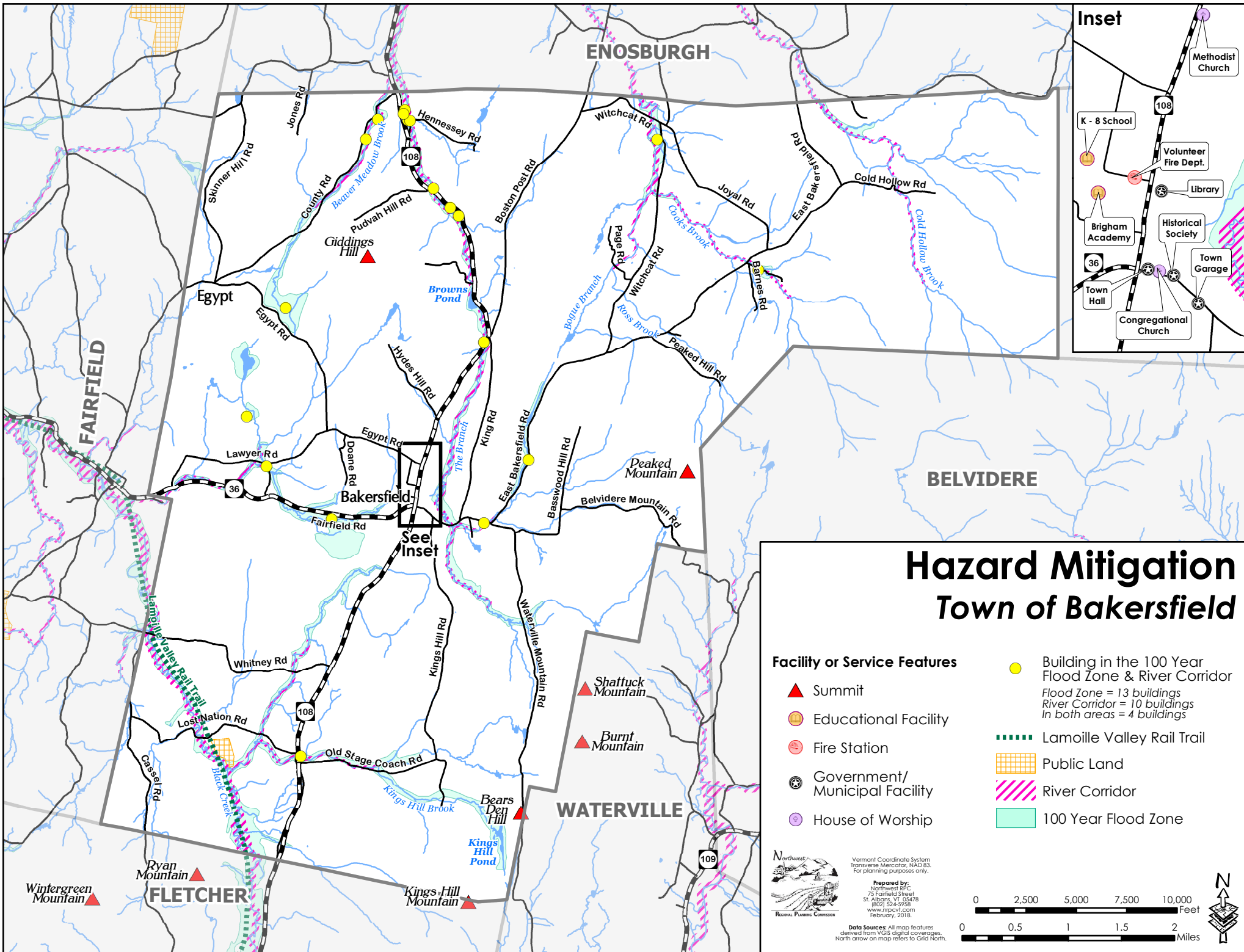


Vermont Coordinate System  
Transverse Mercator, NAD 83.  
For planning purposes only.

Prepared by:  
Northwest RPC  
75 Fairfield Street  
St. Albans, VT 05478  
(802) 524-9958  
www.nrpcvt.com  
February, 2018.

Data Sources: All map features derived from VGIS digital coverages. North arrow on map refers to Grid North.





# Hazard Mitigation Town of Bakersfield

## Facility or Service Features

- Summit
- Educational Facility
- Fire Station
- Government/Municipal Facility
- House of Worship

Building in the 100 Year Flood Zone & River Corridor  
 Flood Zone = 13 buildings  
 River Corridor = 10 buildings  
 In both areas = 4 buildings

- Lamoille Valley Rail Trail
- Public Land
- River Corridor
- 100 Year Flood Zone



Vermont Coordinate System  
 Transverse Mercator, NAD 83.  
 For planning purposes only.

Prepared by:  
 Northwest 99C  
 75 Fairfield Street  
 St. Albans, VT 05478  
 (802) 524-5958  
[www.nrpvt.com](http://www.nrpvt.com)  
 February, 2018

Data Sources: All map features derived from VGIS digital coverages. North arrow on map refers to Grid North.

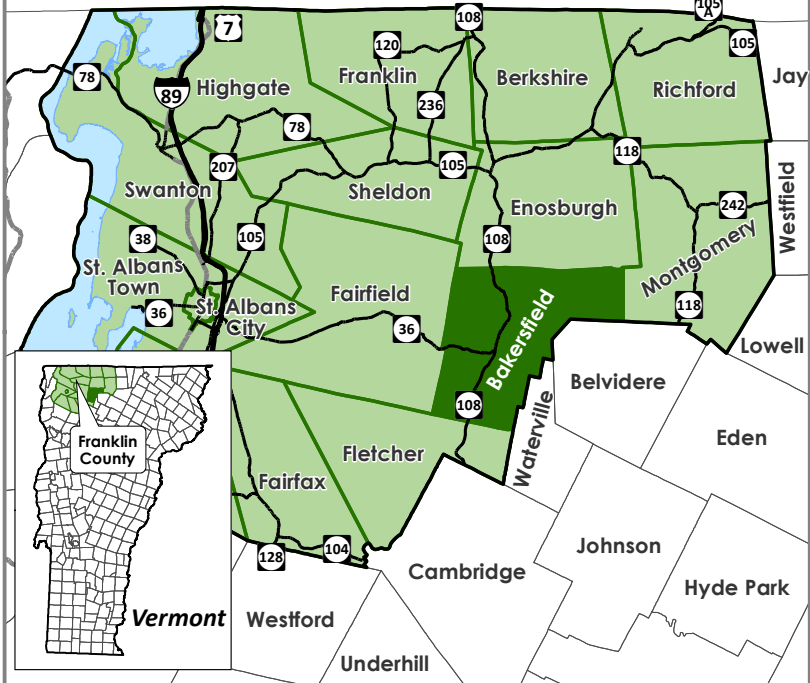
0 2,500 5,000 7,500 10,000 Feet

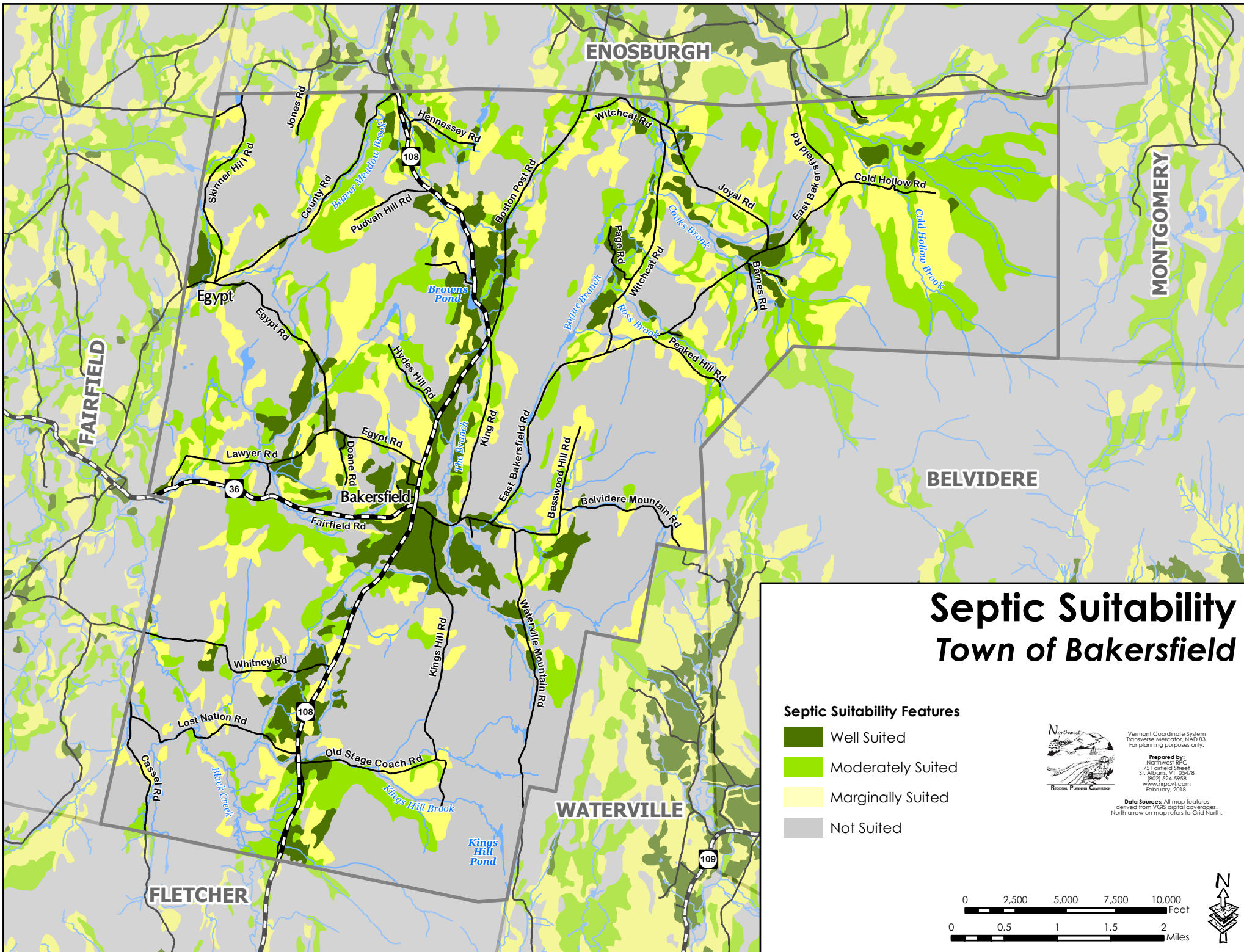
0 0.5 1 1.5 2 Miles





Quebec, Canada





# Septic Suitability Town of Bakersfield

## Septic Suitability Features

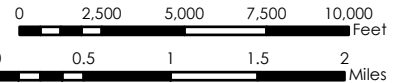
- Well Suited
- Moderately Suited
- Marginally Suited
- Not Suited



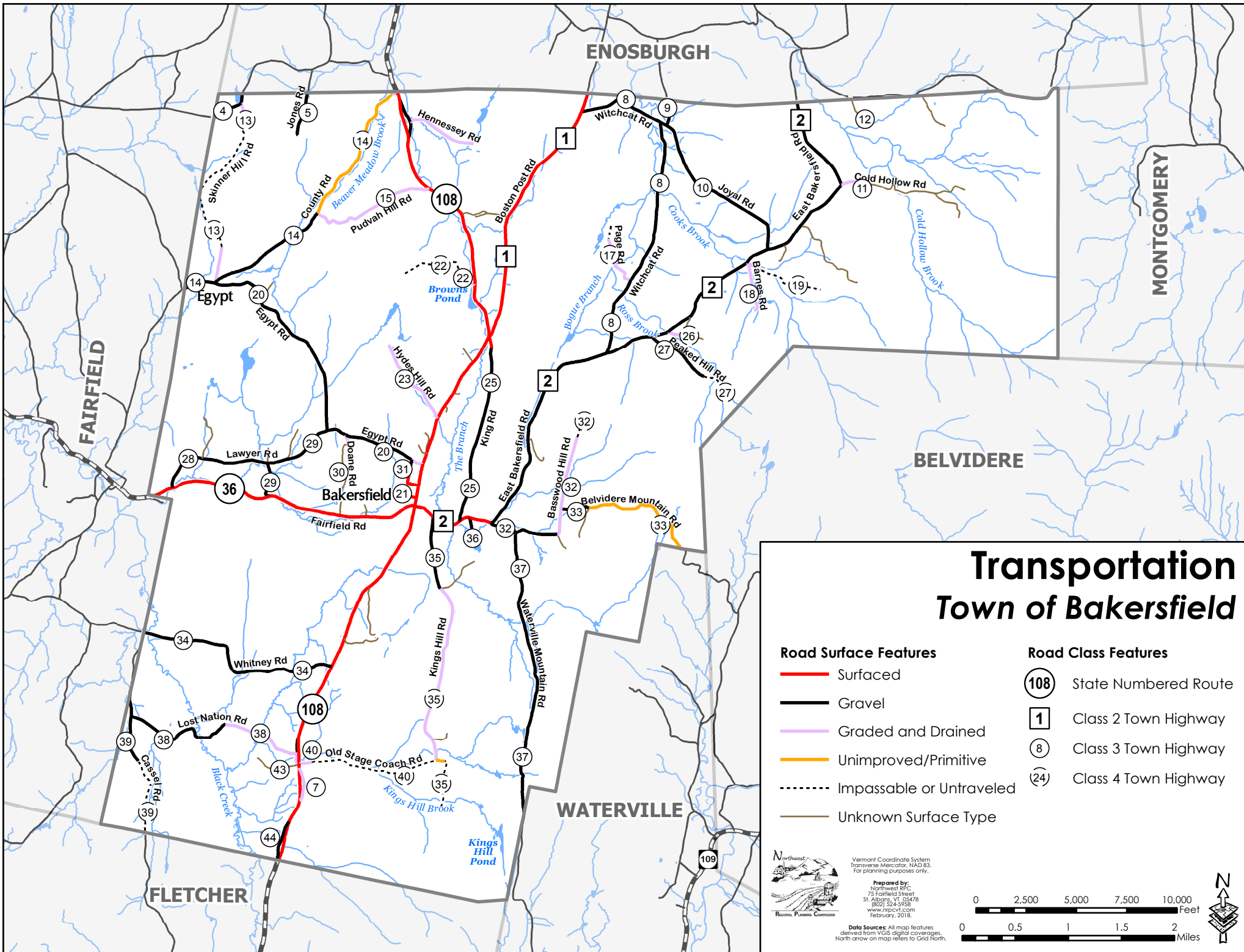
Vermont Coordinate System  
Transverse Mercator, NAD 83.  
For planning purposes only.

Prepared by:  
Northwest RPC  
75 Fairfield Street  
St. Albans, VT 05478  
(802) 524-9958  
www.nrpcvt.com  
February, 2018.

Data Sources: All map features derived from VGIS digital coverages. North arrow on map refers to Grid North.







# Transportation Town of Bakersfield

### Road Surface Features

- Surfaced
- Gravel
- Graded and Drained
- Unimproved/Primitive
- - - - Impassable or Untraveled
- Unknown Surface Type

### Road Class Features

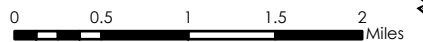
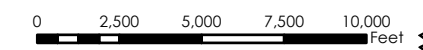
- 108 State Numbered Route
- 1 Class 2 Town Highway
- 8 Class 3 Town Highway
- 24 Class 4 Town Highway

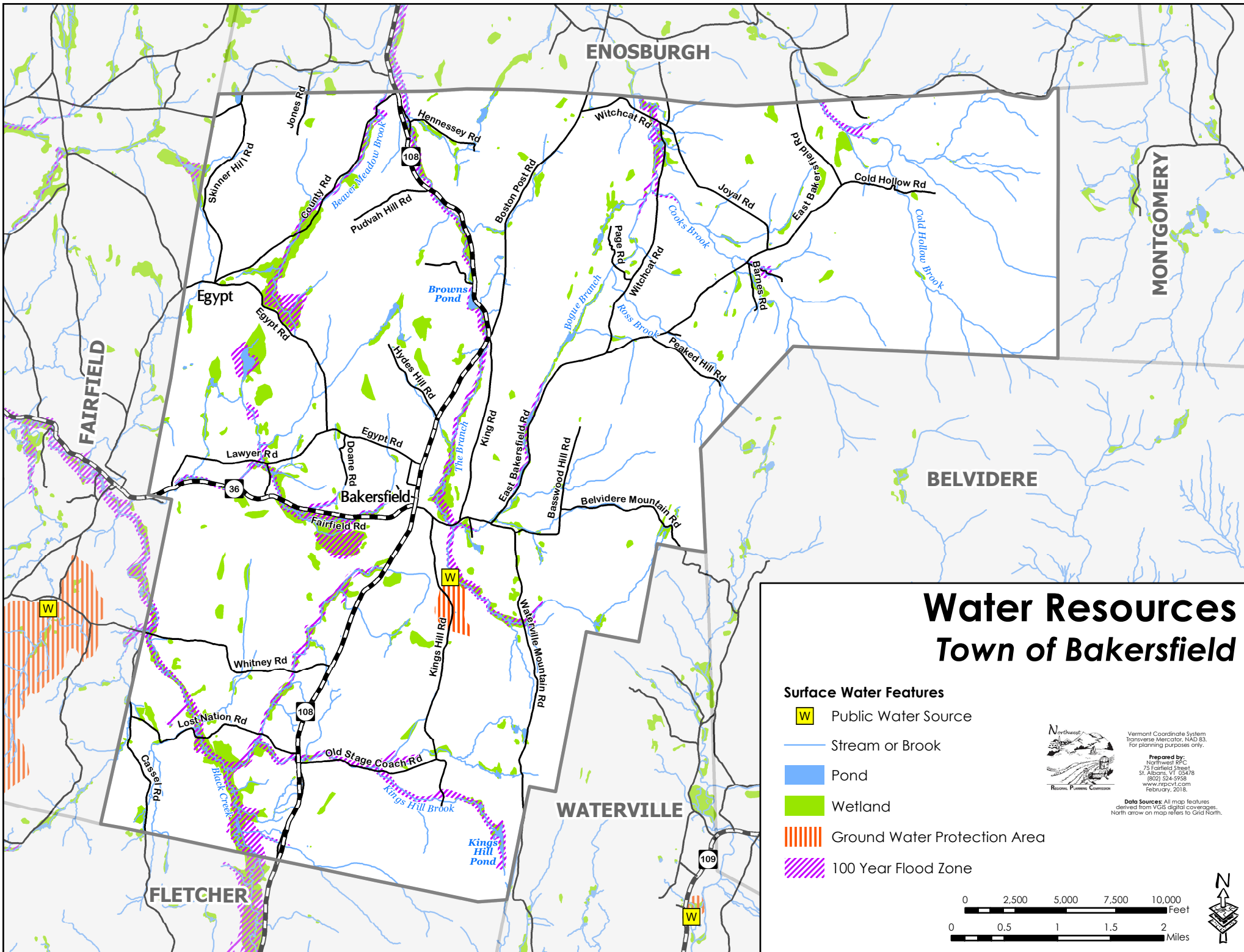


Vermont Coordinate System  
Transverse Mercator, NAD 83.  
For planning purposes only.

Prepared by:  
Northwest APC  
75 Fairfield Street  
St. Albans, VT 05478  
(802) 524-5958  
www.nrcvt.com  
February, 2018

Data Sources: All map features  
derived from VGIS digital coverages.  
North arrow on map refers to Grid North.





ENOSBURGH

MONTGOMERY



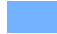



BELVIDERE

WATERVILLE

FLETCHER

# Water Resources Town of Bakersfield

**Surface Water Features**

-  Public Water Source
-  Stream or Brook
-  Pond
-  Wetland
-  Ground Water Protection Area
-  100 Year Flood Zone



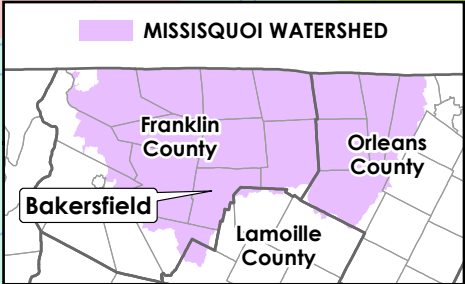
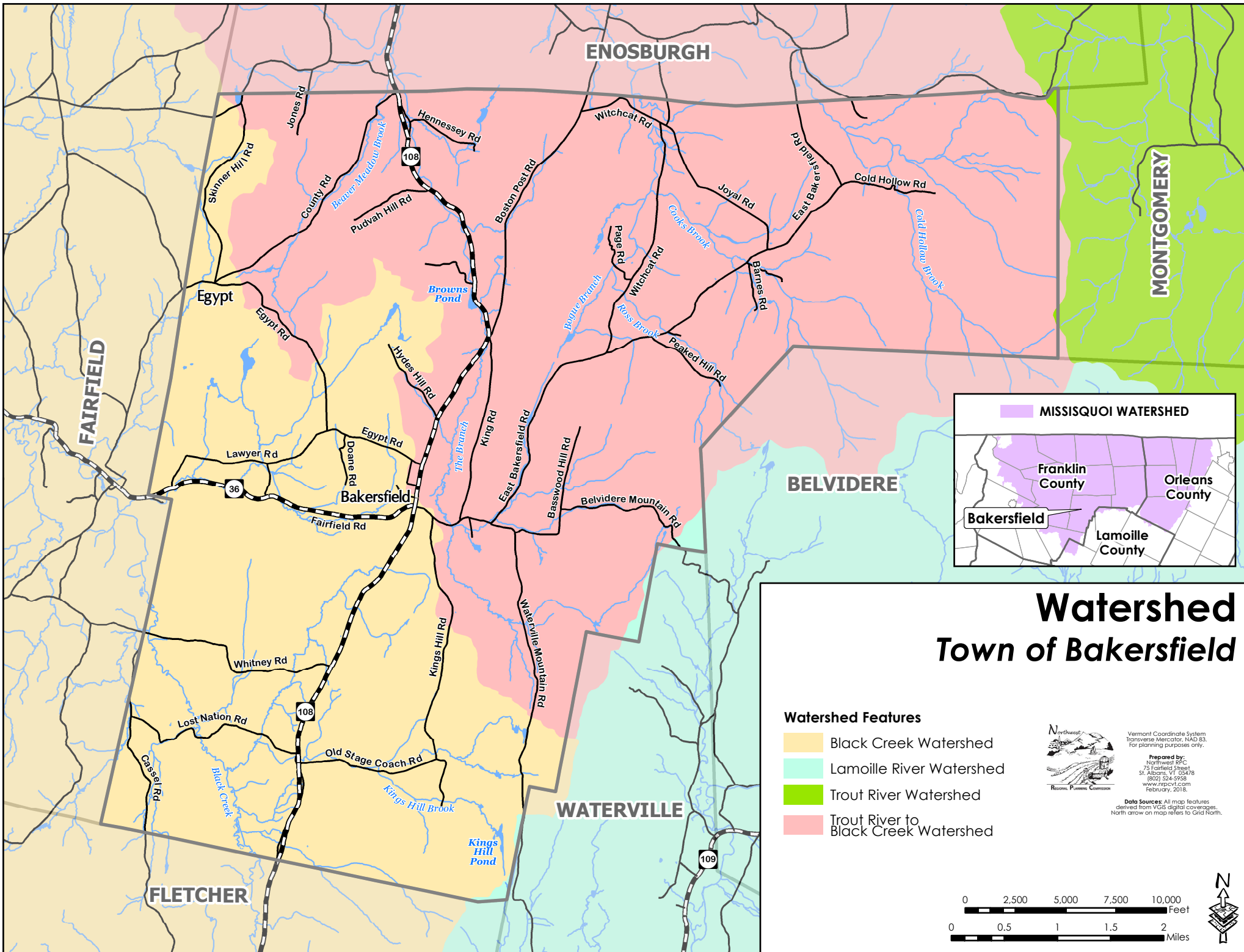
Vermont Coordinate System  
Transverse Mercator, NAD 83.  
For planning purposes only.

Prepared by:  
Northwest RPC  
75 Fairfield Street  
St. Albans, VT 05478  
(802) 524-9958  
www.nrpcvt.com  
February, 2018.

Data Sources: All map features  
derived from VGIS digital coverages.  
North arrow on map refers to Grid North.







# Watershed Town of Bakersfield

### Watershed Features

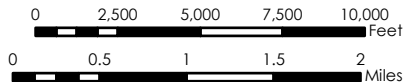
- Black Creek Watershed
- Lamoille River Watershed
- Trout River Watershed
- Trout River to Black Creek Watershed



Vermont Coordinate System  
Transverse Mercator, NAD 83.  
For planning purposes only.

Prepared by:  
Northwest RPC  
75 Fairfield Street  
St. Albans, VT 05478  
(802) 524-9958  
www.nrpcvt.com  
February, 2018.

Data Sources: All map features  
derived from VGIS digital coverages.  
North arrow on map refers to Grid North.

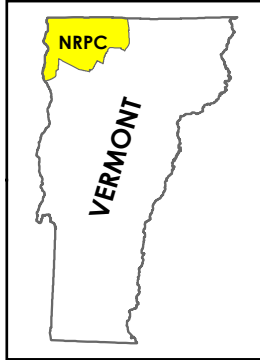


# Utility Service Areas

## Bakersfield, Vermont Act 174

### The Energy Development Improvement Act of 2016

This map and the corresponding data is intended to be used to inform energy planning efforts by municipalities and regions. This may also be used for conceptual planning or initial site identification by those interested in developing renewable energy infrastructure. The maps do **NOT** take the place of site-specific investigation for a proposed facility and cannot be used as "siting maps."



## Legend

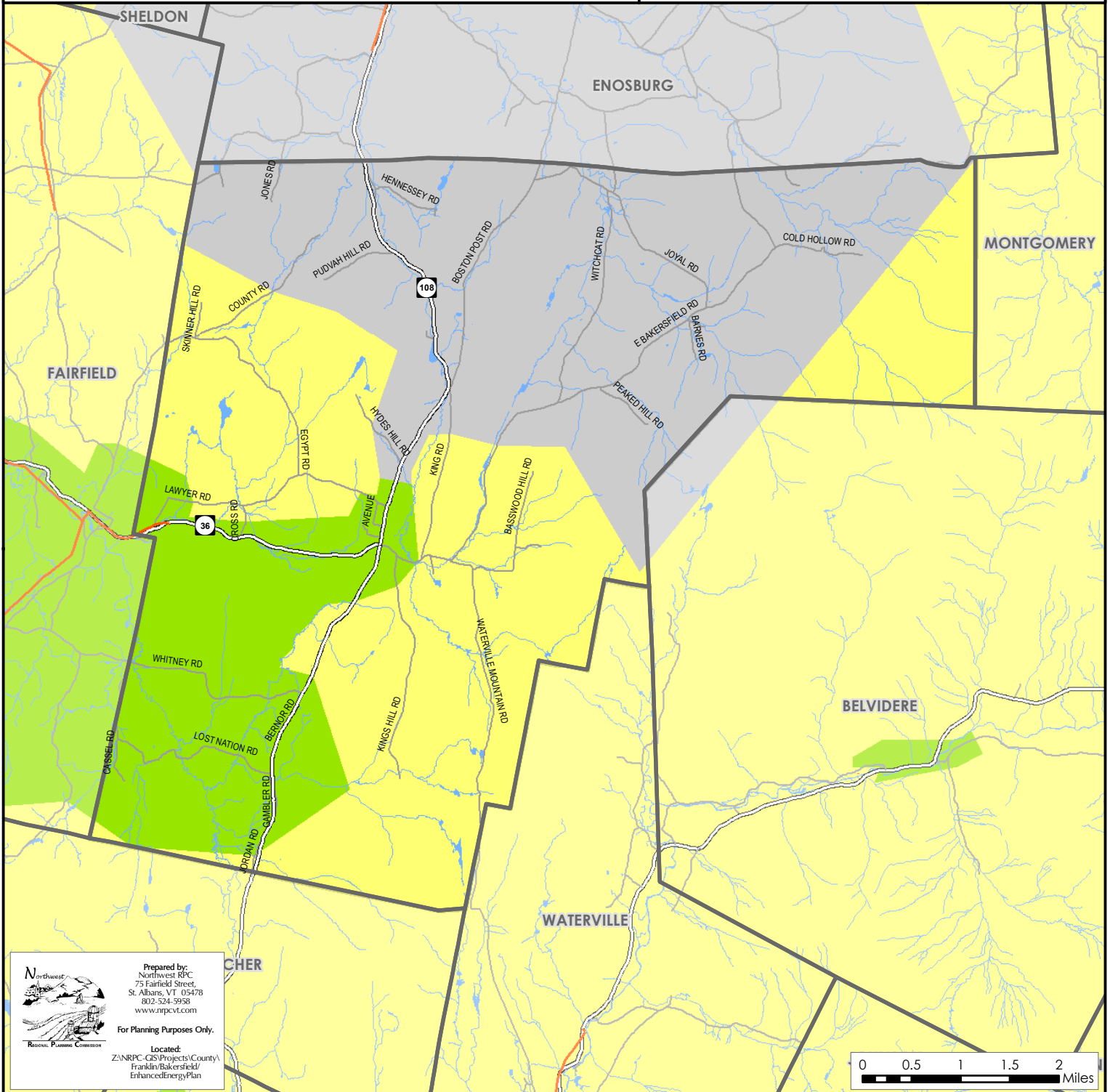
Figure 6.2

### Utility Service Area Features

- Green Mountain Power
- Swanton Village Electric
- Vermont Electric Co-op
- Enosburg Falls Electric
- Substation
- 3 Phase Power Line
- Transmission Line

Sources: VCGI

**Disclaimer:** The accuracy of information presented is determined by its sources. Errors and omissions may exist. The Northwest RPC is not responsible for these. Questions of on-the-ground location can be resolved by site inspections and/or surveys by a registered surveyor. This map is not sufficient for delineation of features on-the-ground. This map identifies the presence of features, and may indicate relationships between features, but is not a replacement for surveyed information or engineering studies.



Prepared by:  
 Northwest RPC  
 75 Fairfield Street,  
 St. Albans, VT 05478  
 802-524-5958  
 www.nrpcvt.com

For Planning Purposes Only.

Located:  
 Z:\NRPC-GIS\Projects\County\Franklin\Bakersfield\EnhancedEnergyPlan

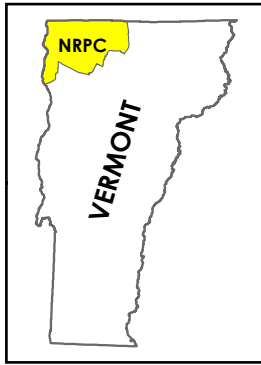


# Transmission & 3 Phase Power Infrastructure





## Bakersfield, Vermont Act 174

### The Energy Development Improvement Act of 2016

This map and the corresponding data is intended to be used to inform energy planning efforts by municipalities and regions. This may also be used for conceptual planning or initial site identification by those interested in developing renewable energy infrastructure. The maps do **NOT** take the place of site-specific investigation for a proposed facility and cannot be used as "siting maps."



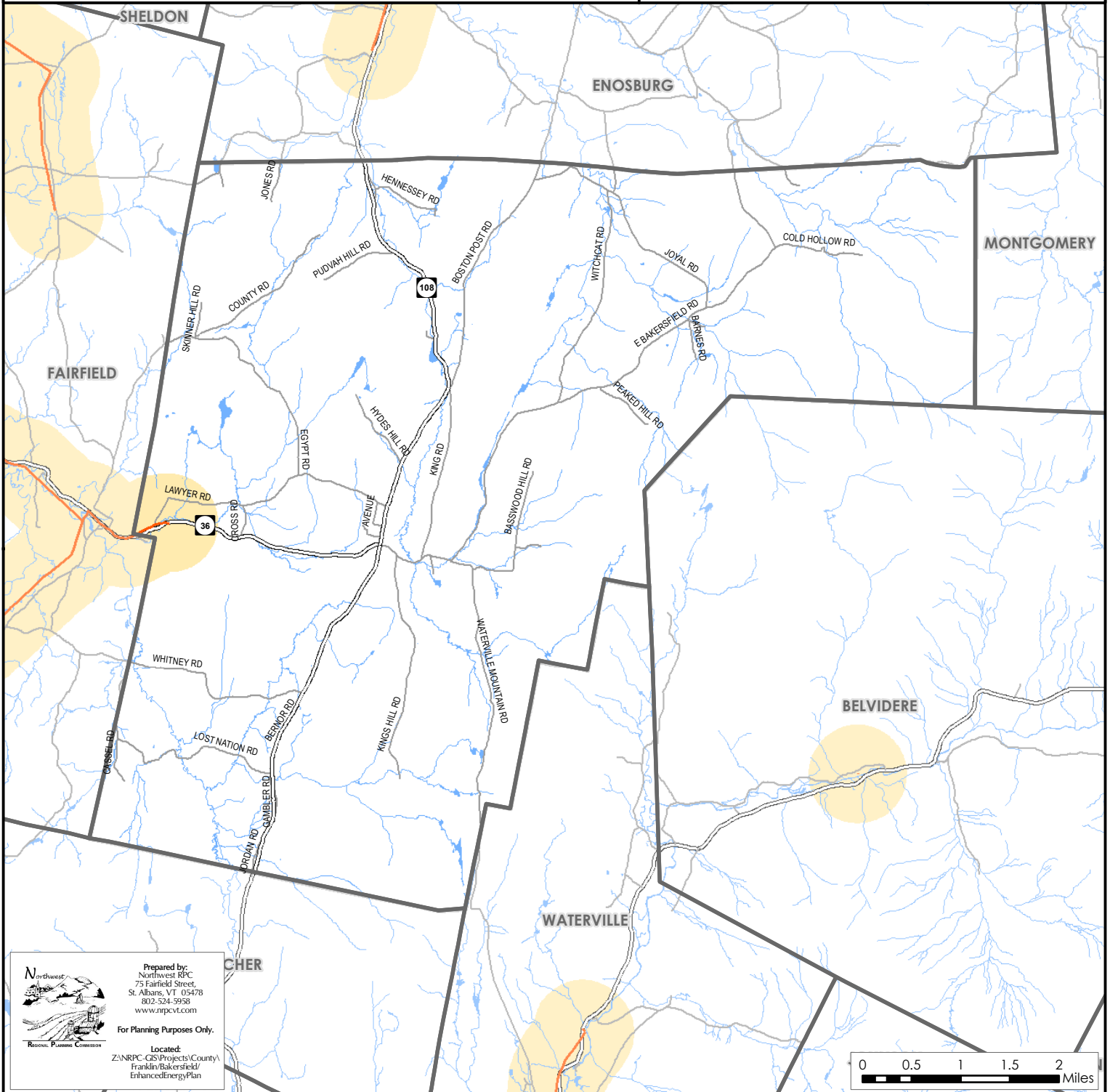
#### Legend

-  Substation
-  3 Phase Power Line
-  Transmission Line
-  1/2 Mile Buffer (3 Phase Power Line & Transmission Line)

**Figure 6.3**

Sources: VCGI

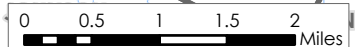
**Disclaimer:** The accuracy of information presented is determined by its sources. Errors and omissions may exist. The Northwest RPC is not responsible for these. Questions of on-the-ground location can be resolved by site inspections and/or surveys by a registered surveyor. This map is not sufficient for delineation of features on-the-ground. This map identifies the presence of features, and may indicate relationships between features, but is not a replacement for surveyed information or engineering studies.



Prepared by:  
Northwest RPC  
75 Fairfield Street,  
St. Albans, VT 05478  
802-524-5958  
www.nrpcvt.com

For Planning Purposes Only.

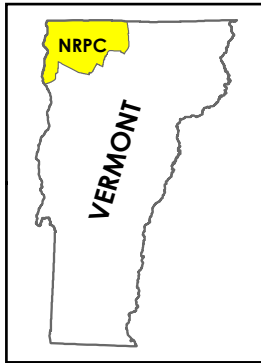
Located:  
Z:\NRPC-GIS\Projects\County\Franklin\Bakersfield\EnhancedEnergyPlan



# Existing Generation Facilities

## Bakersfield, Vermont Act 174 The Energy Development Improvement Act of 2016

This map and the corresponding data is intended to be used to inform energy planning efforts by municipalities and regions. This may also be used for conceptual planning or initial site identification by those interested in developing renewable energy infrastructure. The maps do **NOT** take the place of site-specific investigation for a proposed facility and cannot be used as "siting maps."



### Legend

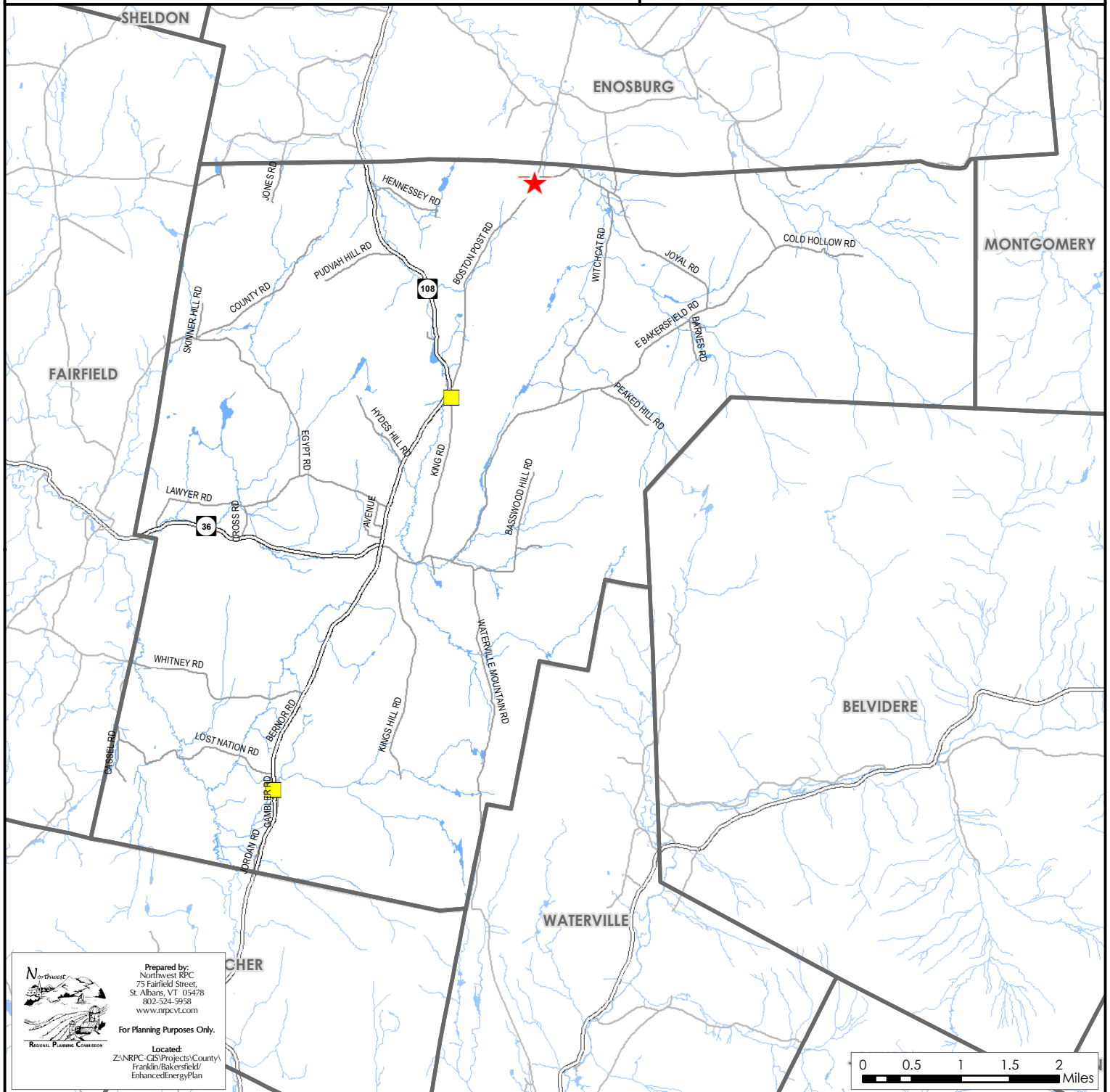
- ★ Biomass Facility
- Hydro Facility
- Solar Facility
- ▲ Wind Facility

### Figure 6.4

**Note:** Only generators 15kW are shown on the map. A full list of all generators is available.

**Sources:** VCGI

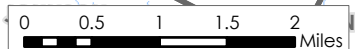
**Disclaimer:** The accuracy of information presented is determined by its sources. Errors and omissions may exist. The Northwest RPC is not responsible for these. Questions of on-the-ground location can be resolved by site inspections and/or surveys by a registered surveyor. This map is not sufficient for delineation of features on-the-ground. This map identifies the presence of features, and may indicate relationships between features, but is not a replacement for surveyed information or engineering studies.



Prepared by:  
Northwest RPC  
75 Fairfield Street,  
St. Albans, VT 05478  
802-524-5958  
www.nrpcvt.com

For Planning Purposes Only.

Located:  
Z:\NRPC-GIS\Projects\County\Franklin\Bakersfield\EnhancedEnergyPlan



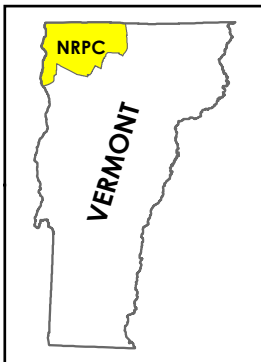


**Figure 6.5**

# Solar

## Bakersfield, Vermont Act 174 The Energy Development Improvement Act of 2016

This map and the corresponding data is intended to be used to inform energy planning efforts by municipalities and regions. This may also be used for conceptual planning or initial site identification by those interested in developing renewable energy infrastructure. The maps do **NOT** take the place of site-specific investigation for a proposed facility and cannot be used as "siting maps."

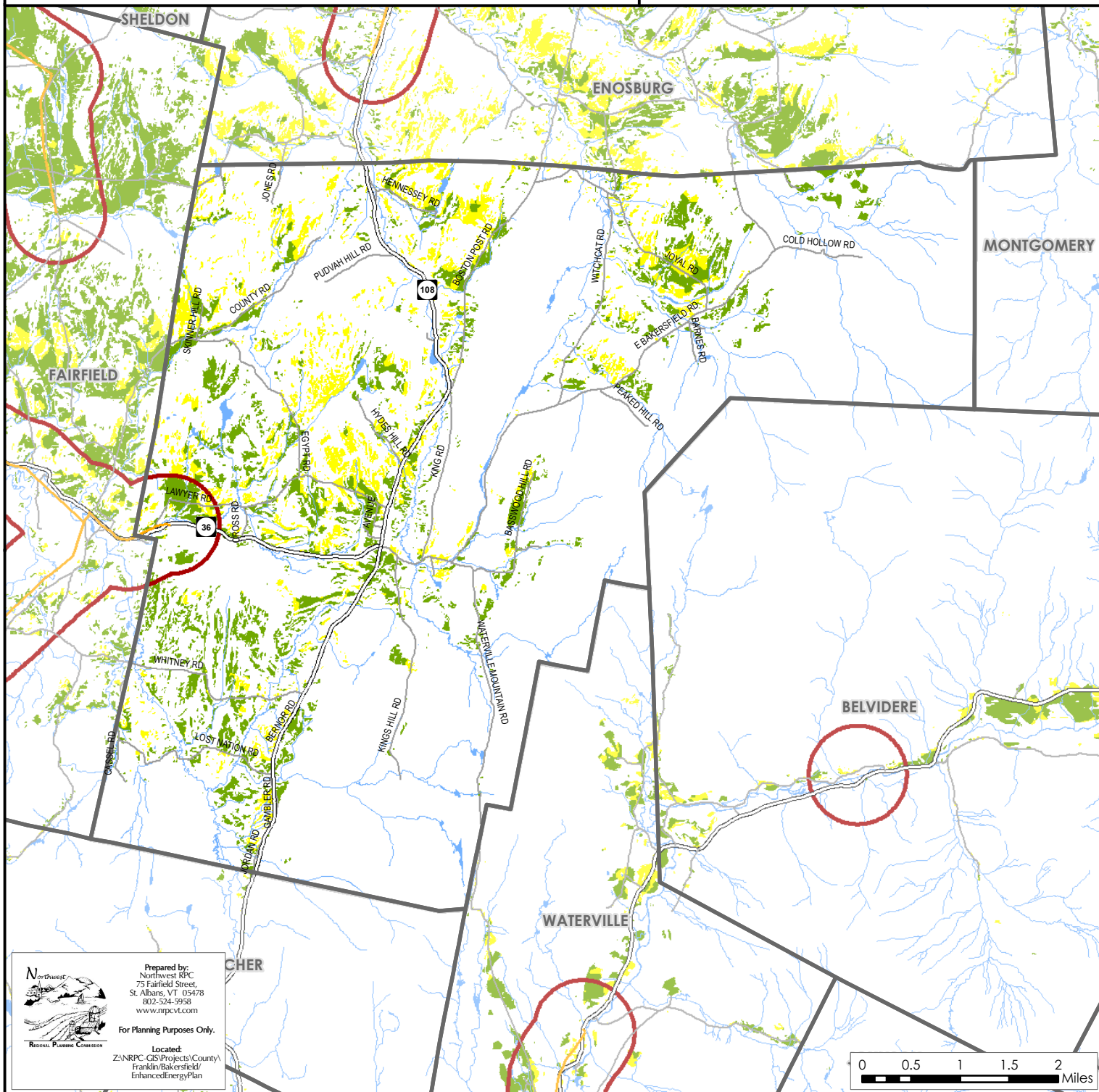


### Legend

- Substation
- 3 Phase Power Line
- Transmission Line
- 1/2 Mile Buffer (3 Phase Power Line & Transmission Line)
- Prime Solar/No Known Constraints
- Base Solar/Possible Constraints

Sources: VCGI

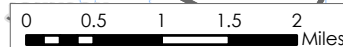
**Disclaimer:** The accuracy of information presented is determined by its sources. Errors and omissions may exist. The Northwest RPC is not responsible for these. Questions of on-the-ground location can be resolved by site inspections and/or surveys by a registered surveyor. This map is not sufficient for delineation of features on-the-ground. This map identifies the presence of features, and may indicate relationships between features, but is not a replacement for surveyed information or engineering studies.



Prepared by:  
Northwest RPC  
75 Fairfield Street,  
St. Albans, VT 05478  
802-524-5958  
www.nrpcvt.com

For Planning Purposes Only.

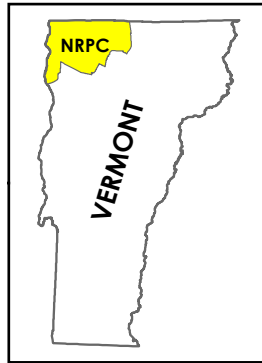
Located:  
Z:\NRPC-GIS\Projects\County\Franklin\Bakersfield\EnhancedEnergyPlan








# Wind

## Bakersfield, Vermont Act 174 The Energy Development Improvement Act of 2016

This map and the corresponding data is intended to be used to inform energy planning efforts by municipalities and regions. This may also be used for conceptual planning or initial site identification by those interested in developing renewable energy infrastructure. The maps do **NOT** take the place of site-specific investigation for a proposed facility and cannot be used of as "siting maps."



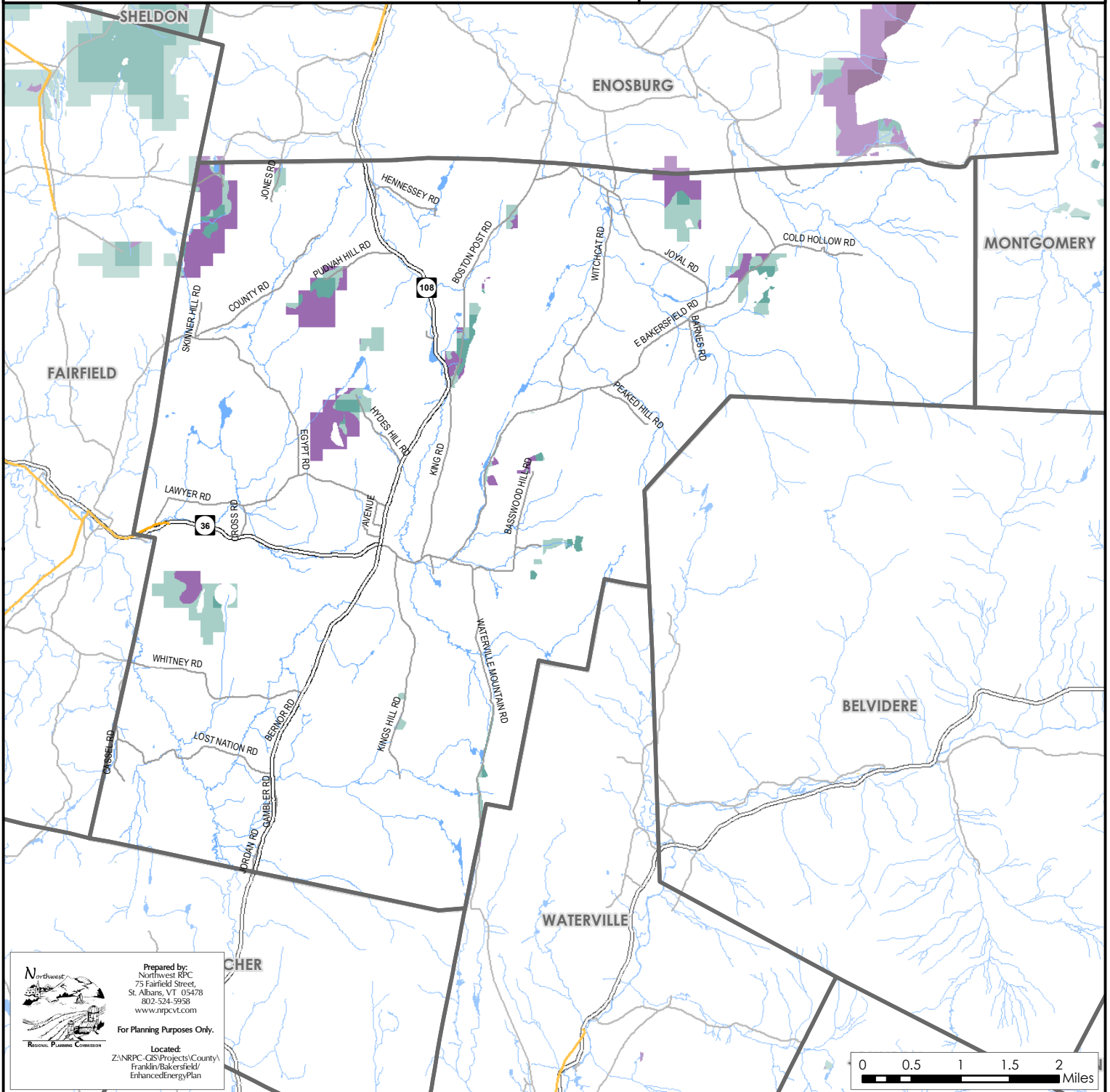
### Legend

-  Substation
-  3 Phase Power Line
-  Transmission Line
-  **Prime Wind**  
Areas of high wind potential and no known constraints.  
Darker areas have higher wind speeds.
-  **Base Wind**  
Areas of high wind potential and a presence of possible constraints.  
Darker areas have higher wind speeds.

**Figure 6.6**

**Sources:** VCGI

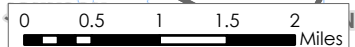
**Disclaimer:** The accuracy of information presented is determined by its sources. Errors and omissions may exist. The Northwest RPC is not responsible for these. Questions of on-the-ground location can be resolved by site inspections and/or surveys by a registered surveyor. This map is not sufficient for delineation of features on-the-ground. This map identifies the presence of features, and may indicate relationships between features, but is not a replacement for surveyed information or engineering studies.



Prepared by:  
Northwest RPC  
75 Fairfield Street,  
St. Albans, VT 05478  
802-524-5958  
www.nrpcvt.com

For Planning Purposes Only.

Located:  
Z:\NRPC-GIS\Projects\County\Franklin\Bakersfield\EnhancedEnergyPlan





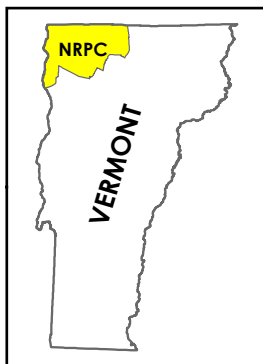
**Figure 6.7**

# Woody Biomass

## Bakersfield, Vermont Act 174

### The Energy Development Improvement Act of 2016

This map and the corresponding data is intended to be used to inform energy planning efforts by municipalities and regions. This may also be used for conceptual planning or initial site identification by those interested in developing renewable energy infrastructure. The maps do **NOT** take the place of site-specific investigation for a proposed facility and cannot be used of as "siting maps."

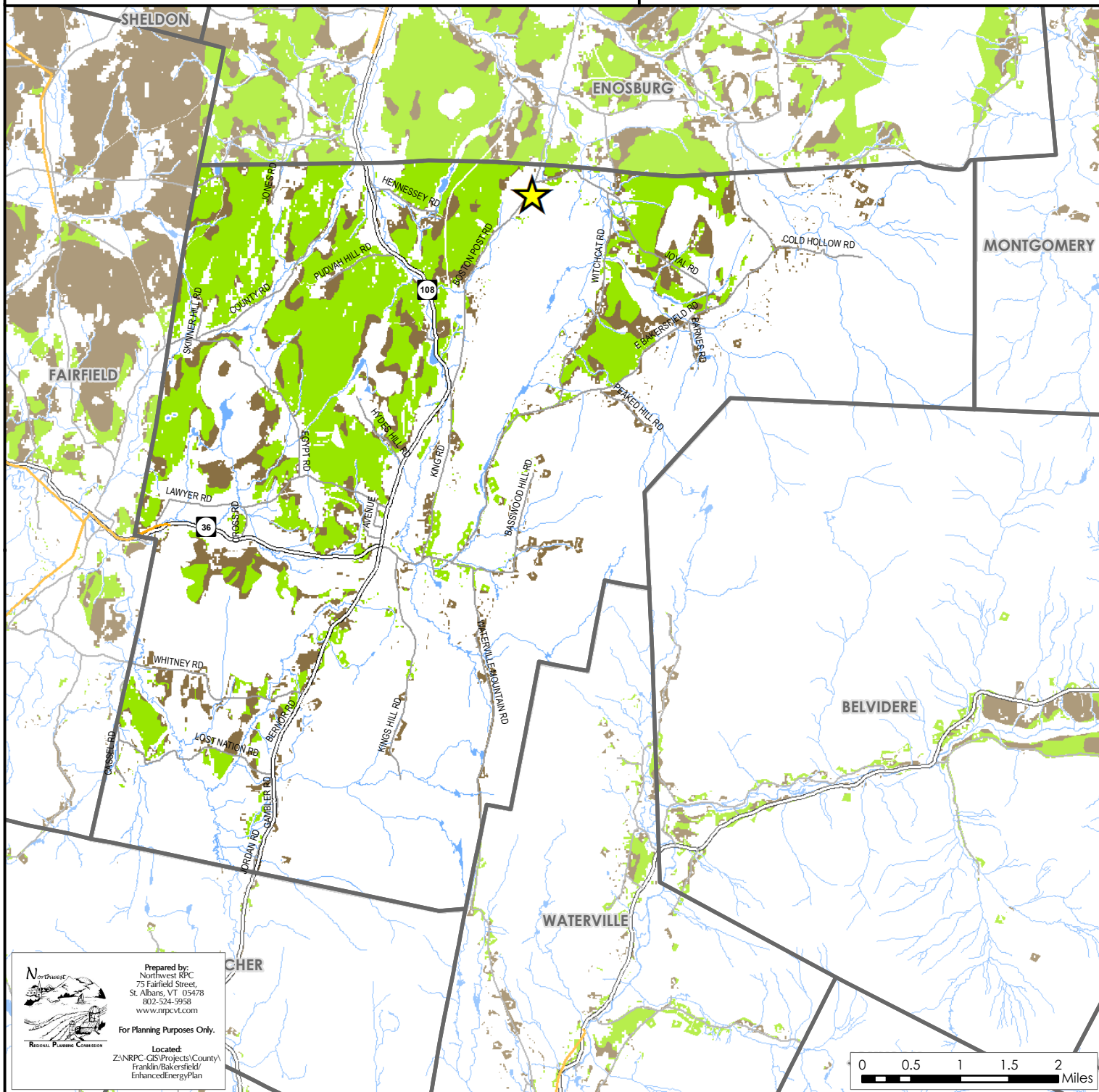


#### Legend

- Biomass System
- Cow Power
- Substation
- 3 Phase Power Line
- Transmission Line
- Prime Woody Biomass/No Known Constraints
- Base Woody Biomass/Possible Constraints

**Sources:** VCGI

**Disclaimer:** The accuracy of information presented is determined by its sources. Errors and omissions may exist. The Northwest RPC is not responsible for these. Questions of on-the-ground location can be resolved by site inspections and/or surveys by a registered surveyor. This map is not sufficient for delineation of features on-the-ground. This map identifies the presence of features, and may indicate relationships between features, but is not a replacement for surveyed information or engineering studies.




 Prepared by:  
 Northwest RPC  
 75 Fairfield Street,  
 St. Albans, VT 05478  
 802-524-5958  
 www.nrpcvt.com  
 For Planning Purposes Only.  
 Located:  
 Z:\NRPC-GIS\Projects\County\Franklin\Bakersfield\EnhancedEnergyPlan

# Hydro

## Bakersfield, Vermont

### Act 174

### The Energy Development Improvement Act of 2016

This map and the corresponding data is intended to be used to inform energy planning efforts by municipalities and regions. This may also be used for conceptual planning or initial site identification by those interested in developing renewable energy infrastructure. The maps do **NOT** take the place of site-specific investigation for a proposed facility and cannot be used as "siting maps."



#### Legend

- Substation
- 3 Phase Power Line
- Transmission Line
- Designated Outstanding Resource Water
- Known Constraint - Designated National Wild & Scenic River
- Possible Constraint - Stressed or Impaired Water
- Possible Constraint - RINAs

Sources: VCGI

**Disclaimer:** The accuracy of information presented is determined by its sources. Errors and omissions may exist. The Northwest RPC is not responsible for these. Questions of on-the-ground location can be resolved by site inspections and/or surveys by a registered surveyor. This map is not sufficient for delineation of features on-the-ground. This map identifies the presence of features, and may indicate relationships between features, but is not a replacement for surveyed information or engineering studies.

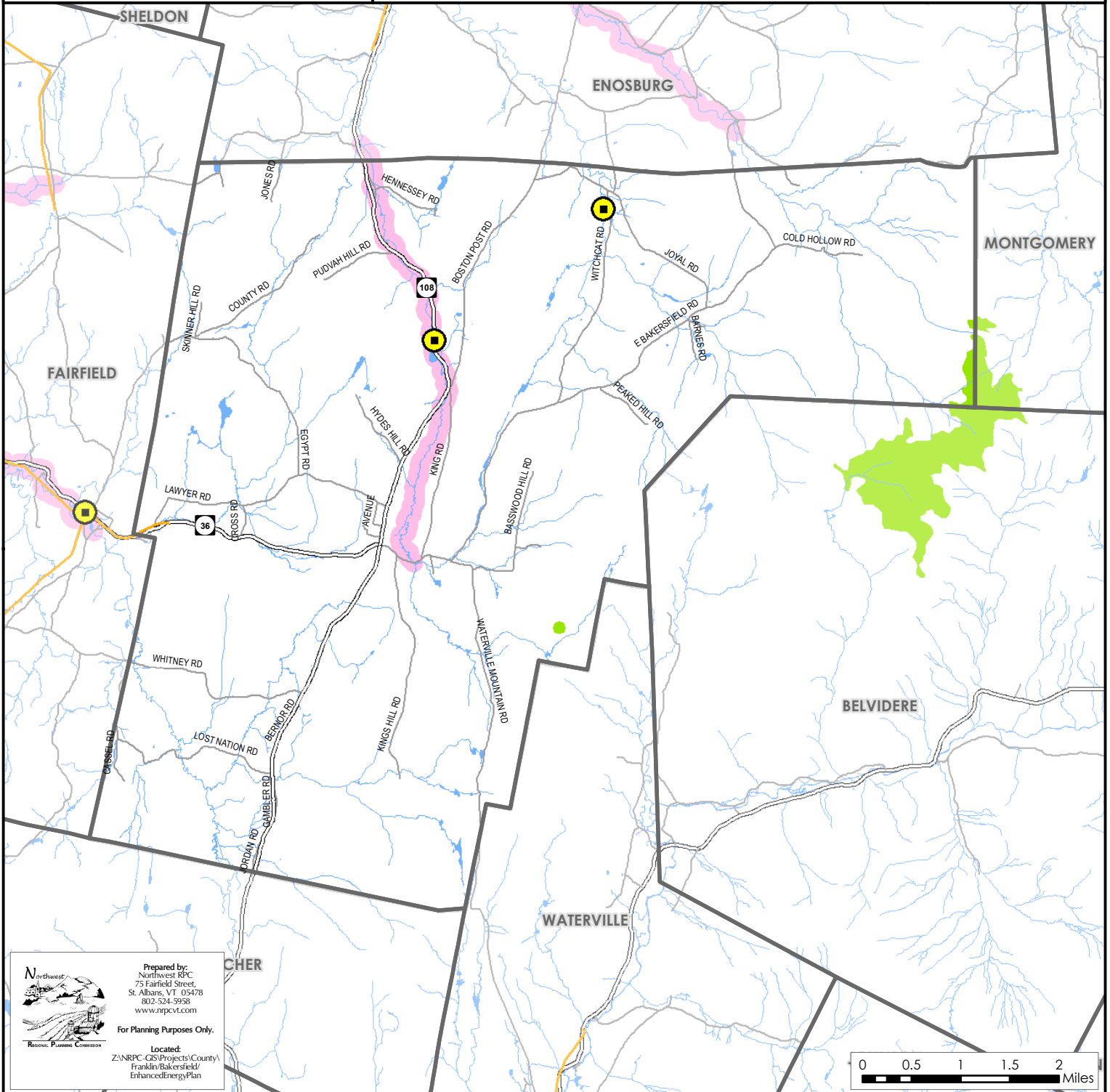
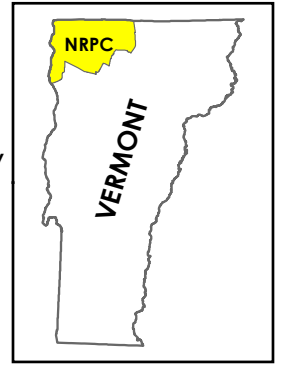
#### Potential Hydroelectric Facility

- < 50 kW Capacity
- > 50 kW Capacity
- High Hazard with < 50 kW Capacity
- High Hazard with > 50 kW Capacity

#### Operating Hydroelectric Facility

- Dam not on National Wild and Scenic River
- Dam on National Wild and Scenic River

Figure 6.8



Prepared by:  
Northwest RPC  
75 Fairfield Street,  
St. Albans, VT 05478  
802-524-5958  
www.nrpcvt.com

For Planning Purposes Only.

Located:  
Z:\NRPC-GIS\Projects\County\Franklin\Bakersfield\EnhancedEnergyPlan