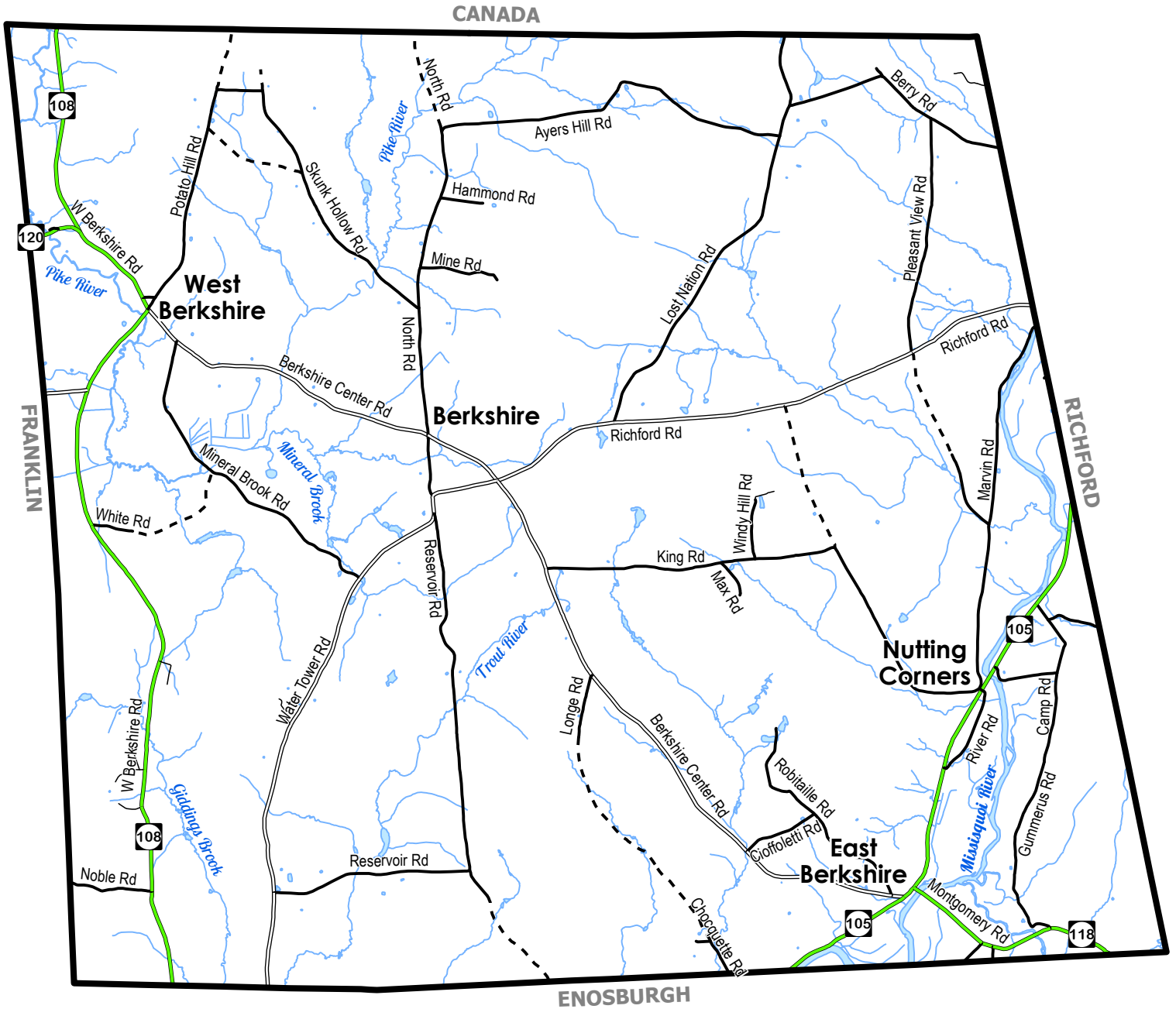


BASE MAP



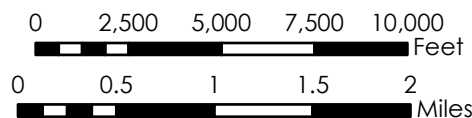
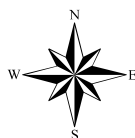
Vermont Coordinate System
Transverse Mercator, NAD 83.
For planning purposes only.



Prepared by:
Northwest Regional
Planning Commission
75 Fairfield Street
St. Albans, VT 05478
(802) 524-5958
www.nrpcvt.com
February, 2020.

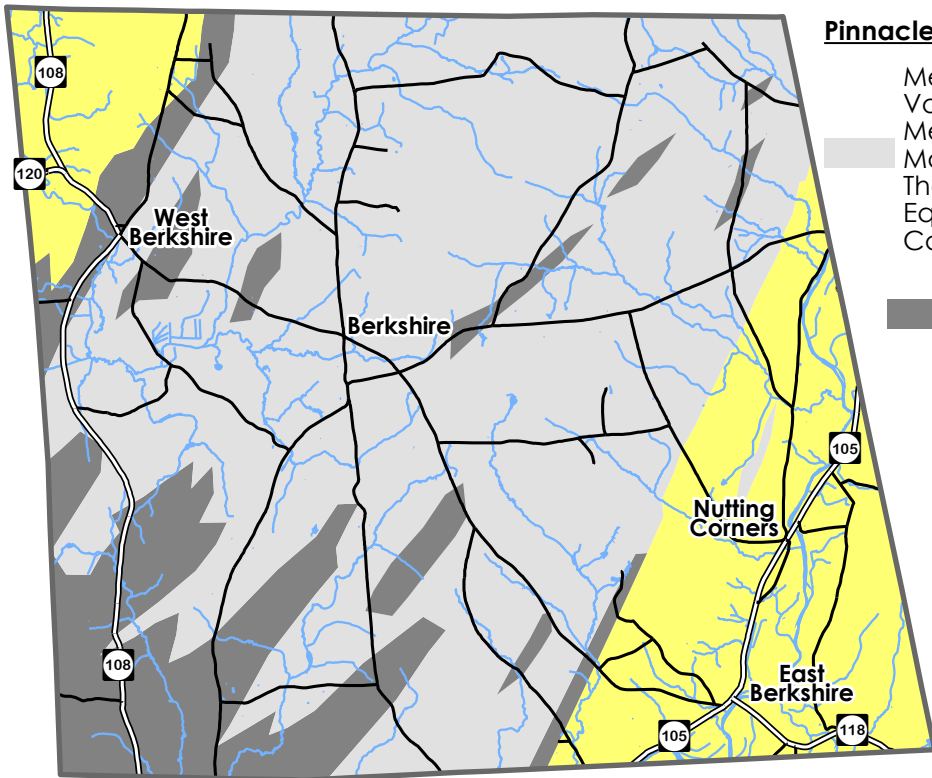
Data Sources: All map features
derived from VGIS digital coverages.
North arrow on map refers to Grid North.

Location: z:\gis\projects\county\
franklin\berkshire\townplan2020



LEGEND

- State Highway
- Class 2 Town Highway
- Class 3 Town Highway
- Class 4 Town Highway
- Private Road
- Town Boundary
- Stream or Brook
- Lake or Pond



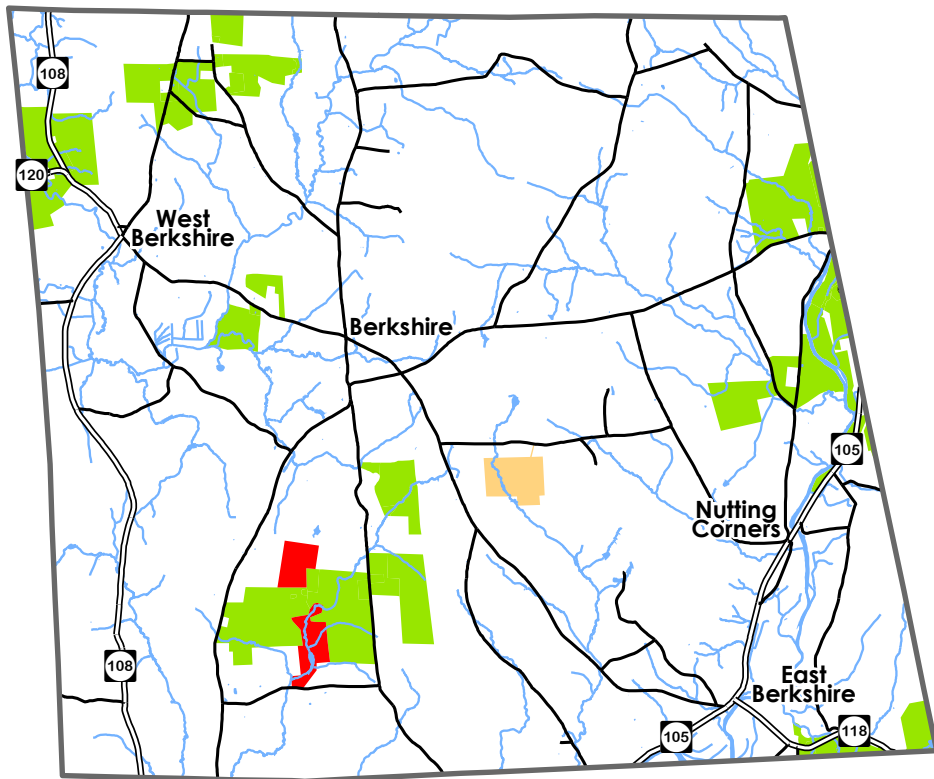
Pinnacle Formation

Metamorphosed
Volcanic Rocks & Clastic
Metasedimentary Rocks;
Mafic Igneous Rocks &
Their Metamorphic
Equivalents; Minor
Carbonate

Slate, Graywacke &
Conglomerate

Underhill Formation

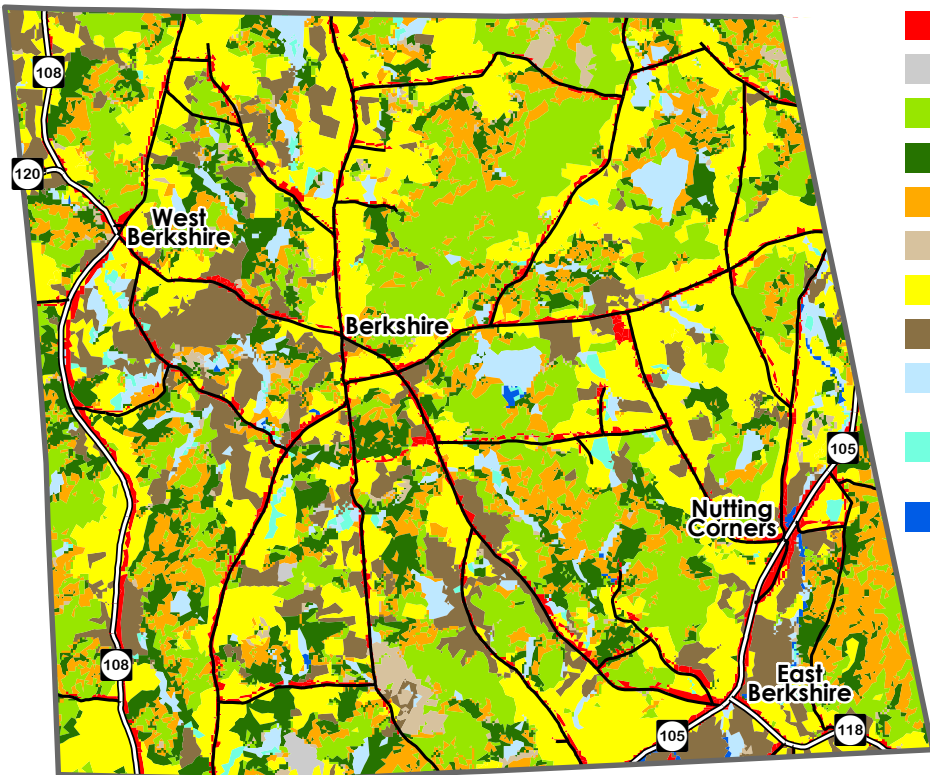
Pelitic Schist,
Phyllite, Gneiss,
& Granofels



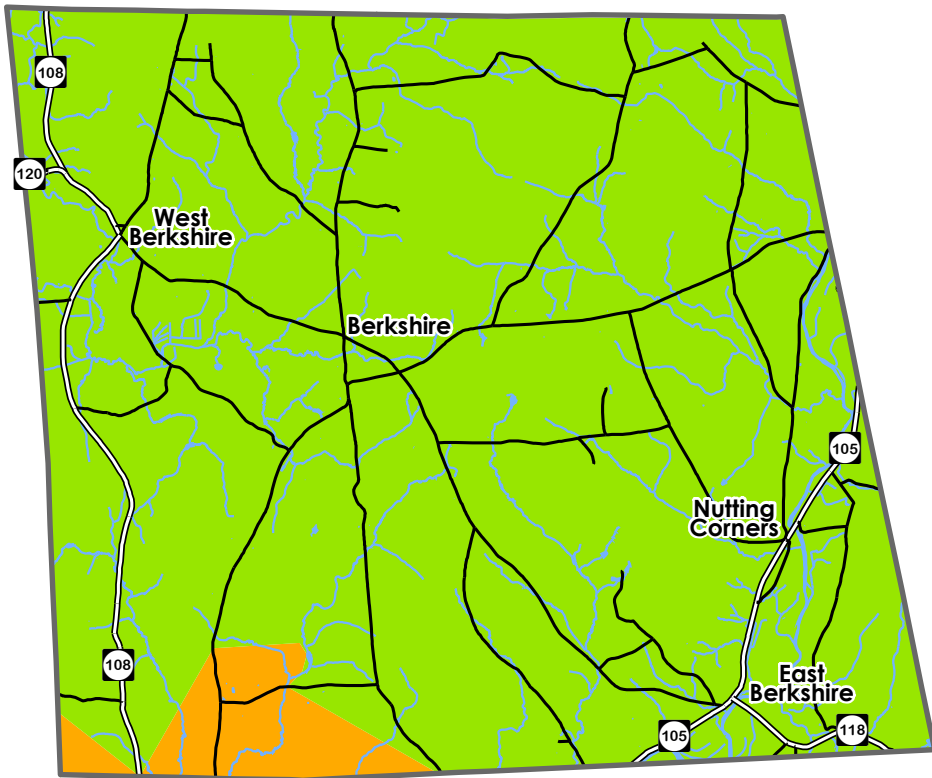
Berkshire
Town Forest

Enosburg
Village Forest

Vermont
Land Trust

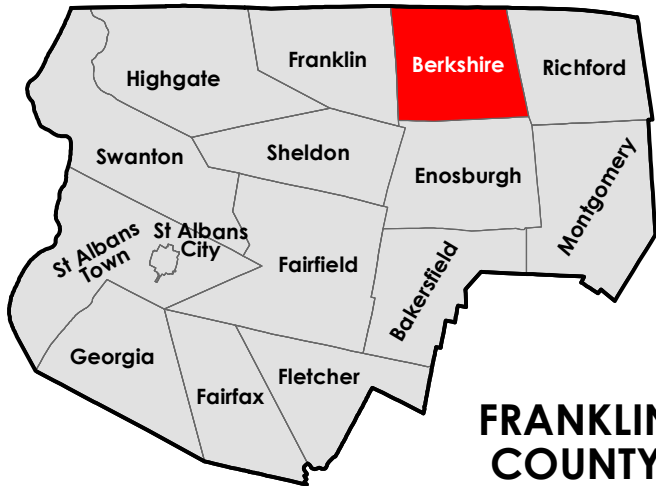


- Developed
- Barren Land
- Deciduous Forest
- Evergreen Forest
- Mixed Forest
- Shrub/Scrub
- Pasture/Hay
- Cultivated Crops
- Woody Wetlands
- Emergency Herbaceous Wetlands
- Open Water

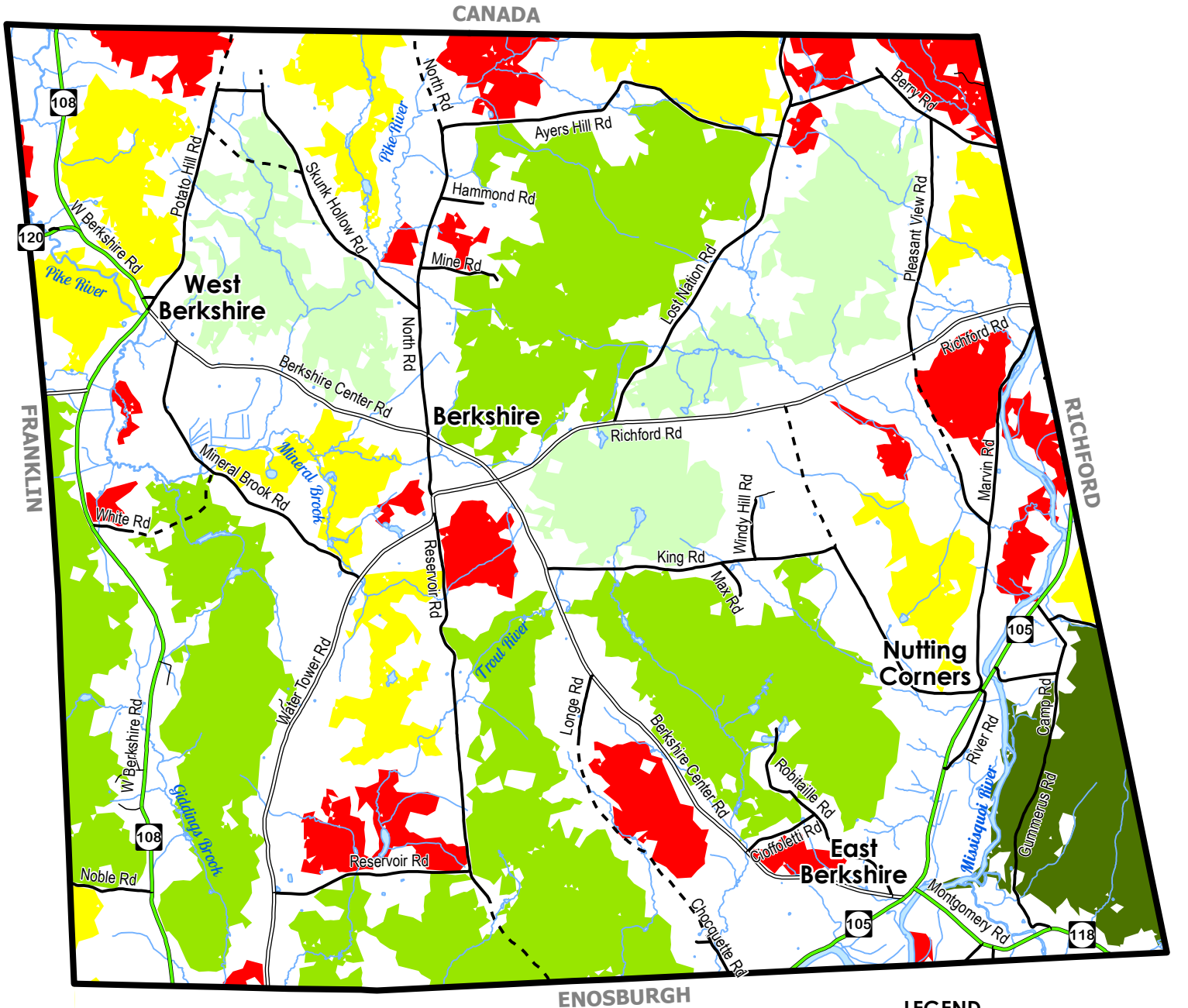


 Vermont
Electric Co-op

 Village of
Enosburg Falls



HABITAT BLOCKS



LEGEND

- State Highway
- Class 2 Town Highway
- Class 3 Town Highway
- Class 4 Town Highway
- Private Road
- Town Boundary
- Stream or Brook
- Lake or Pond
- Habitat Blocks 20 - 250 Acres
- Habitat Blocks 250 - 500 Acres
- Habitat Blocks 500 - 1,000 Acres
- Habitat Blocks 1,000 - 2,000 Acres
- Habitat Blocks > 2,000 Acres

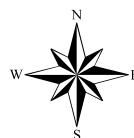
Vermont Coordinate System
Transverse Mercator, NAD 83.
For planning purposes only.



Prepared by:
Northwest Regional
Planning Commission
75 Fairfield Street
St. Albans, VT 05478
(802) 524-5958
www.nrpcvt.com
February, 2020.

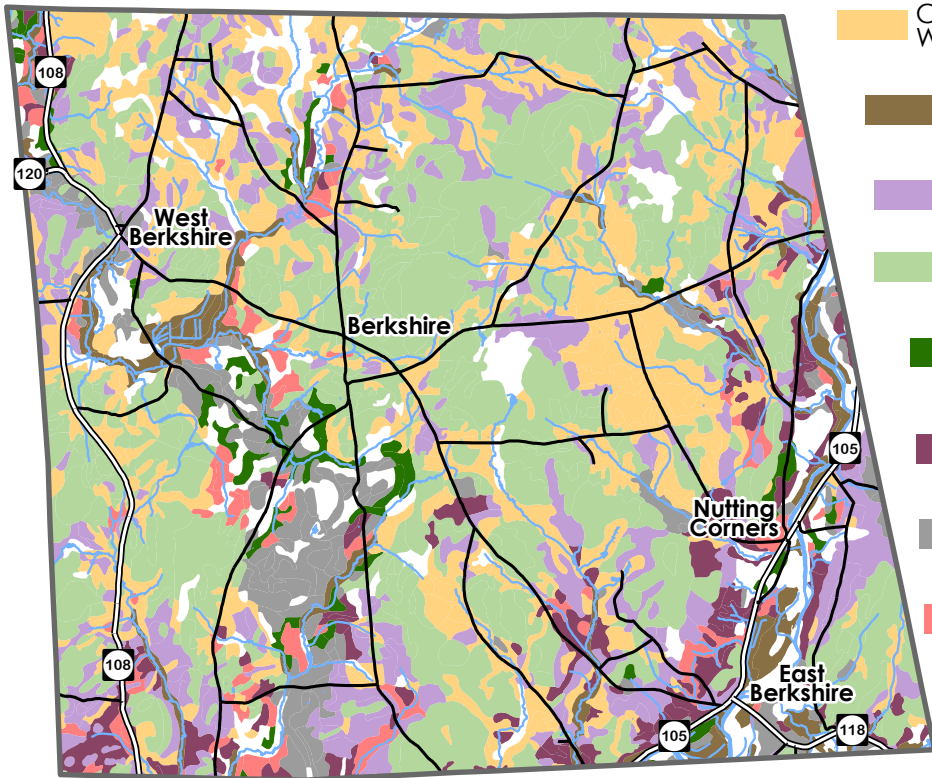
Data Sources: All map features
derived from VGIS digital coverages.
North arrow on map refers to Grid North.

Location: z:\gis\projects\county\
franklin\berkshire\townplan2020



0 2,500 5,000 7,500 10,000
Feet

0 0.5 1 1.5 2
Miles



Cabot(CaA-B, CbA-B) -
Westbury(WrA-C)

Limerick(Le) -
Rumney Variant(Ru) -
Winooski(Wt)

Peru(PeB-D, PrC-D) -
Stowe(StB-D, SwC-D)

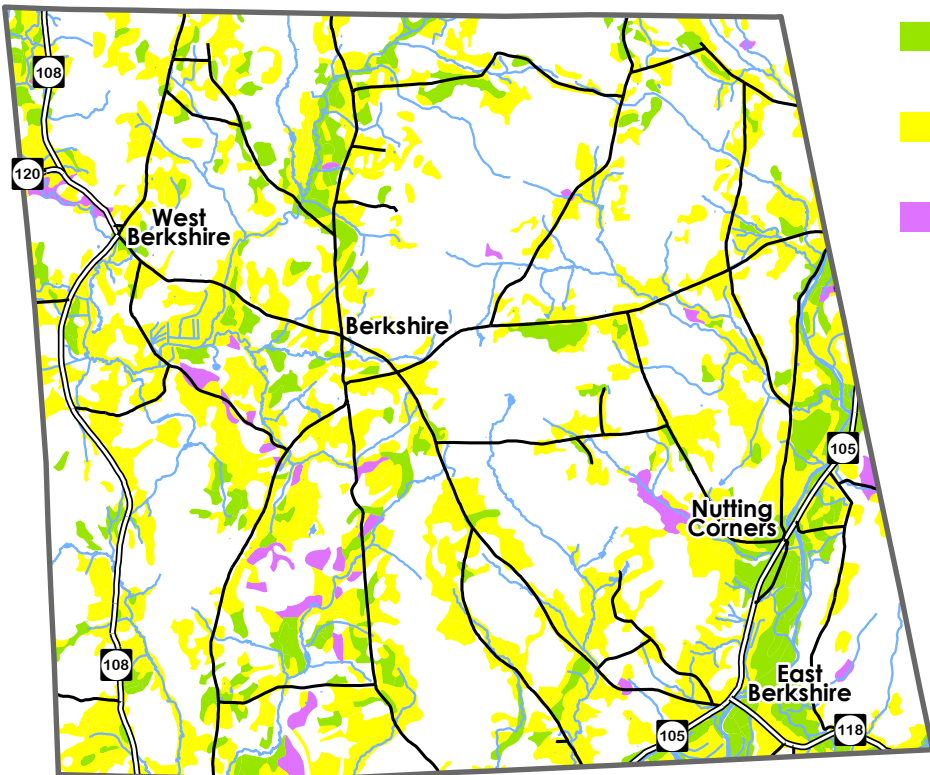
Woodstock(WxC-E) -
Tunbridge(TwB-D)

Au Gres(AuA) -
Enosburg(EnA-B) -
Wareham(Wh)

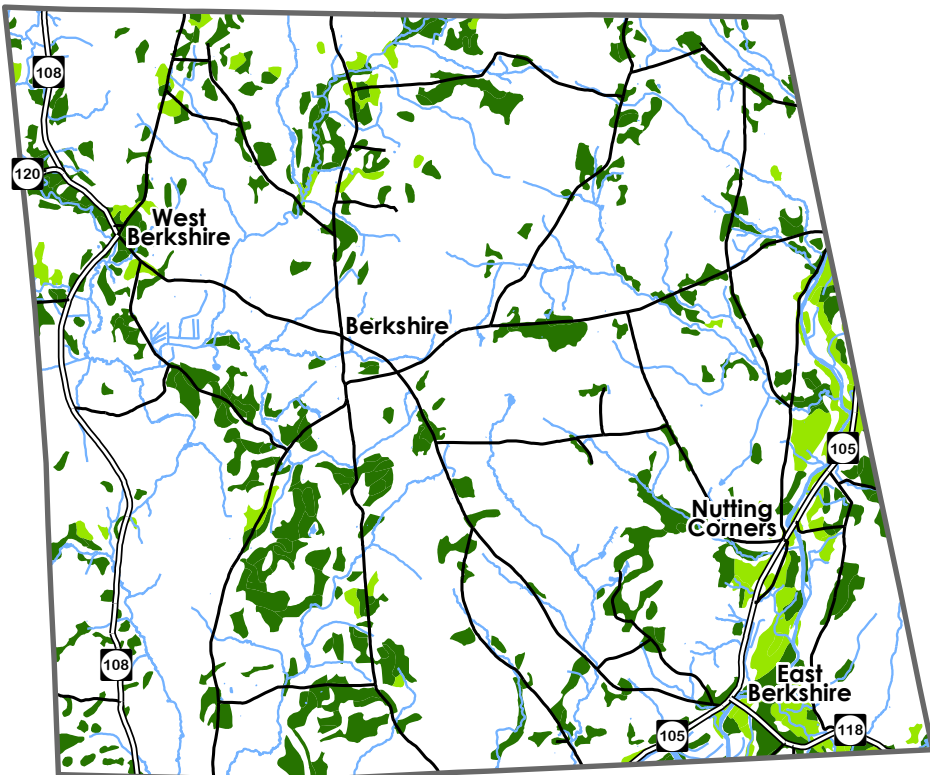
Munson(MuB-C) -
Buxton(BxC-E) -
Belgrade(BeB-C)

Windsor(WsA-E) -
Missisquoi(MsA-E)

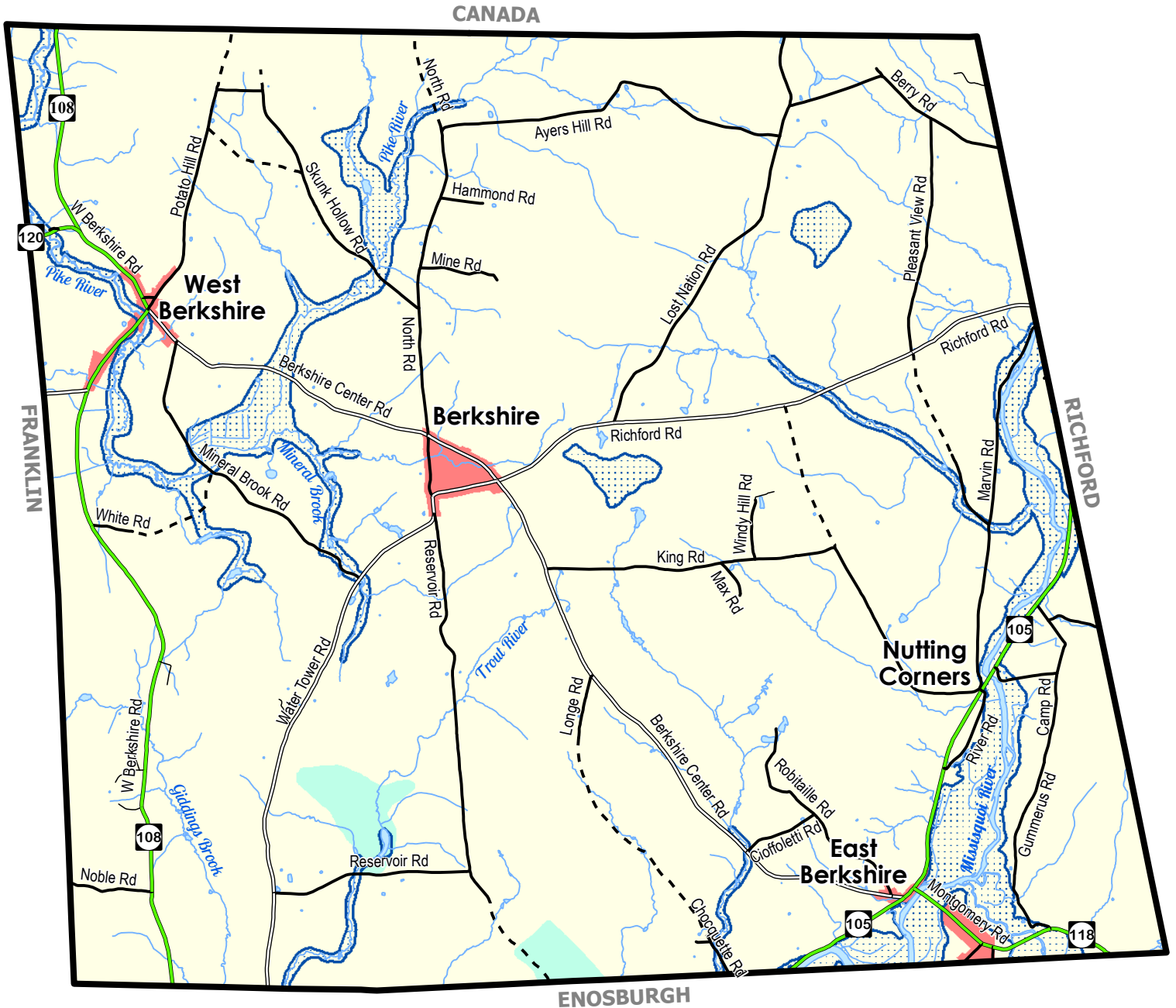
Scantic(ScA-B) -
Raynham(RaB) -
Binghamville(Bg)



-  Prime Soils
-  Statewide Importance Soils
-  Local Soils



PROPOSED LAND USE



LEGEND

- State Highway
- Class 2 Town Highway
- Class 3 Town Highway
- Class 4 Town Highway
- Private Road
- Town Boundary
- Stream or Brook
- Lake or Pond
- Extended Village District
- Rural Lands District
- Wellhead Protection District
- ▨ Flood Hazard Area Overlay District

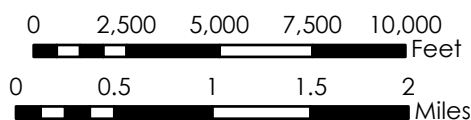
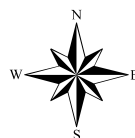
Vermont Coordinate System
Transverse Mercator, NAD 83.
For planning purposes only.



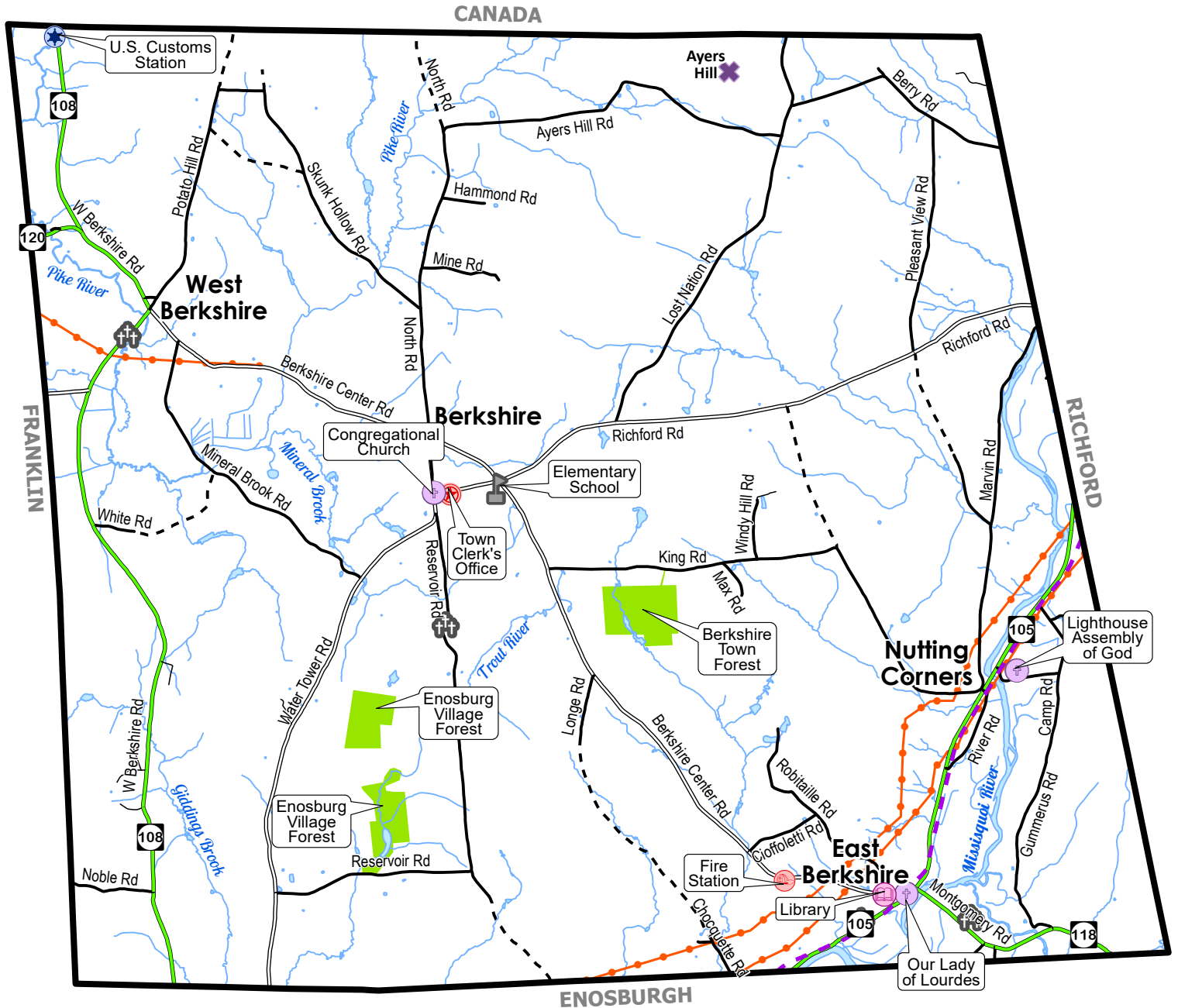
Prepared by:
Northwest Regional
Planning Commission
75 Fairfield Street
St. Albans, VT 05478
(802) 524-5958
www.nrpcvt.com
February, 2020.

Data Sources: All map features
derived from VGIS digital coverages.
North arrow on map refers to Grid North.

Location: z:\gis\projects\county\
franklin\berkshire\townplan2020

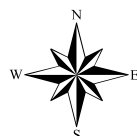


PUBLIC FACILITIES & UTILITIES



LEGEND

- Border Crossing
- Fire Department
- Cemetery
- Library
- Church
- Town Clerk
- School
- Summit



0 2,500 5,000 7,500 10,000 Feet

0 0.5 1 1.5 2 Miles

Vermont Coordinate System
Transverse Mercator, NAD 83.
For planning purposes only.

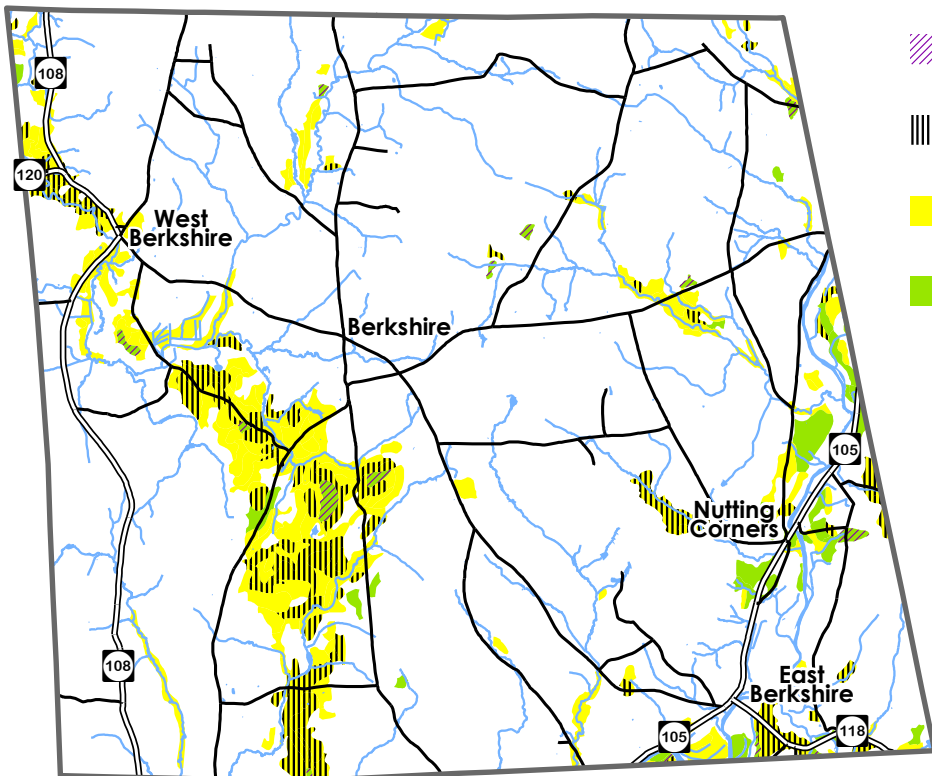


Prepared by:
Northwest Regional
Planning Commission
75 Fairfield Street
St. Albans, VT 05478
(802) 524-5958
www.nrpcvt.com
February, 2020.

Data Sources: All map features
derived from VGIS digital coverages.
North arrow on map refers to Grid North.

Location: z:\gis\projects\county\
franklin\berkshire\townplan2020

- State Highway
- Class 2 Town Highway
- Class 3 Town Highway
- Class 4 Town Highway
- Private Road
- Missisquoi Valley Rail Trail
- Electric Transmission Line
- Town Boundary
- Stream or Brook
- Lake or Pond
- Municipal Forest

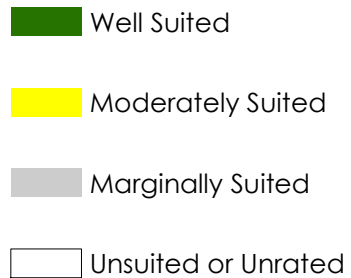
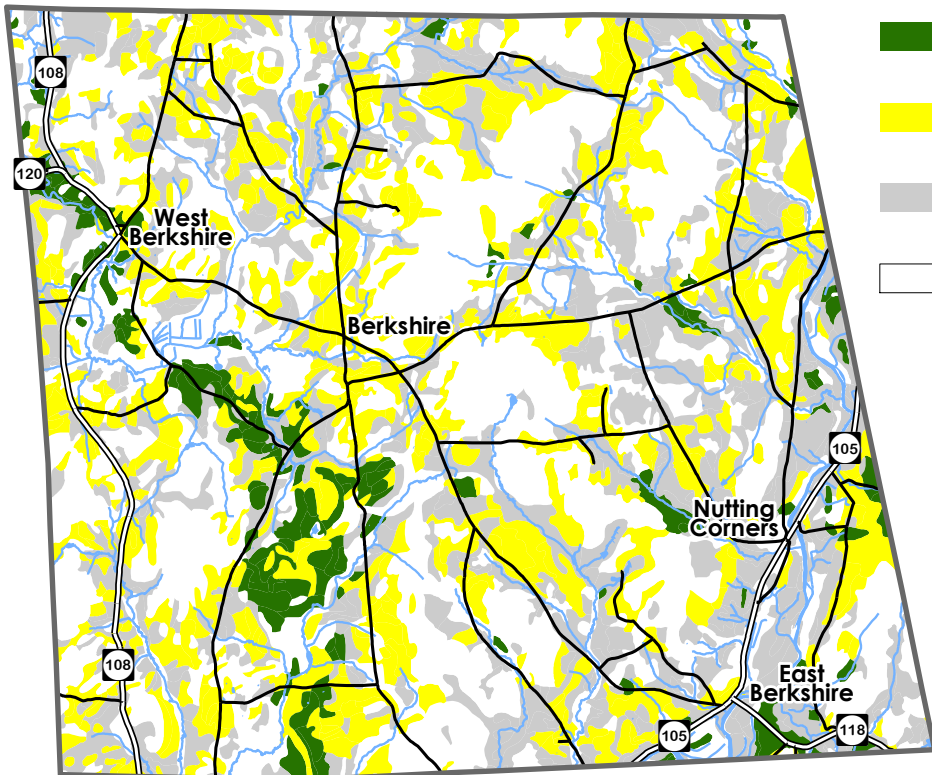


Gravel -
Good Potential

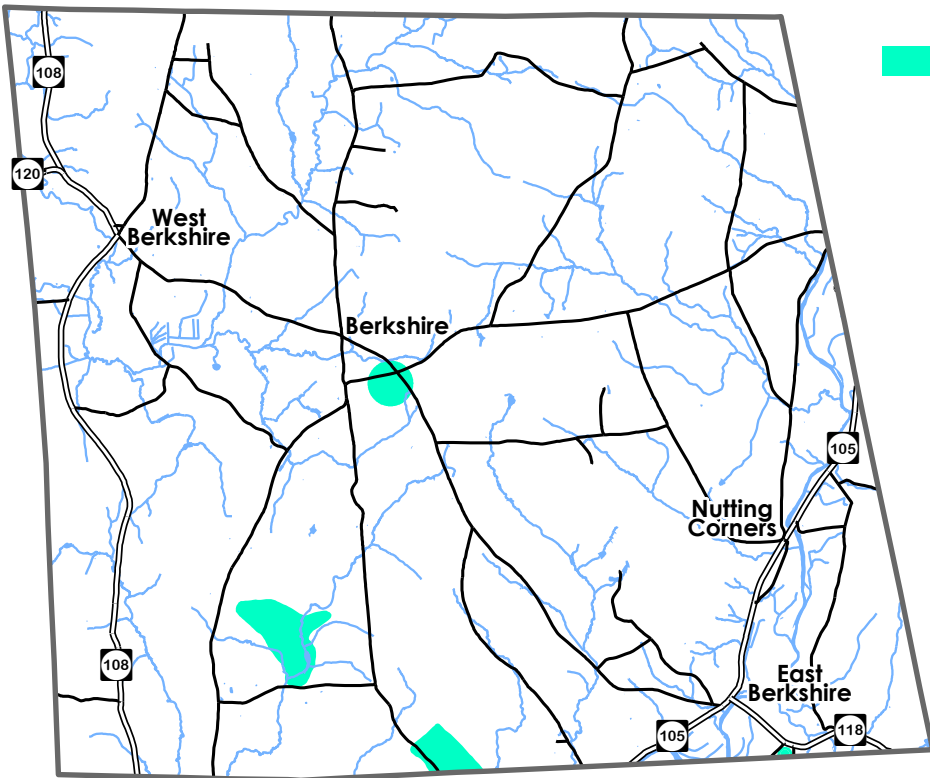
Gravel -
Fair Potential

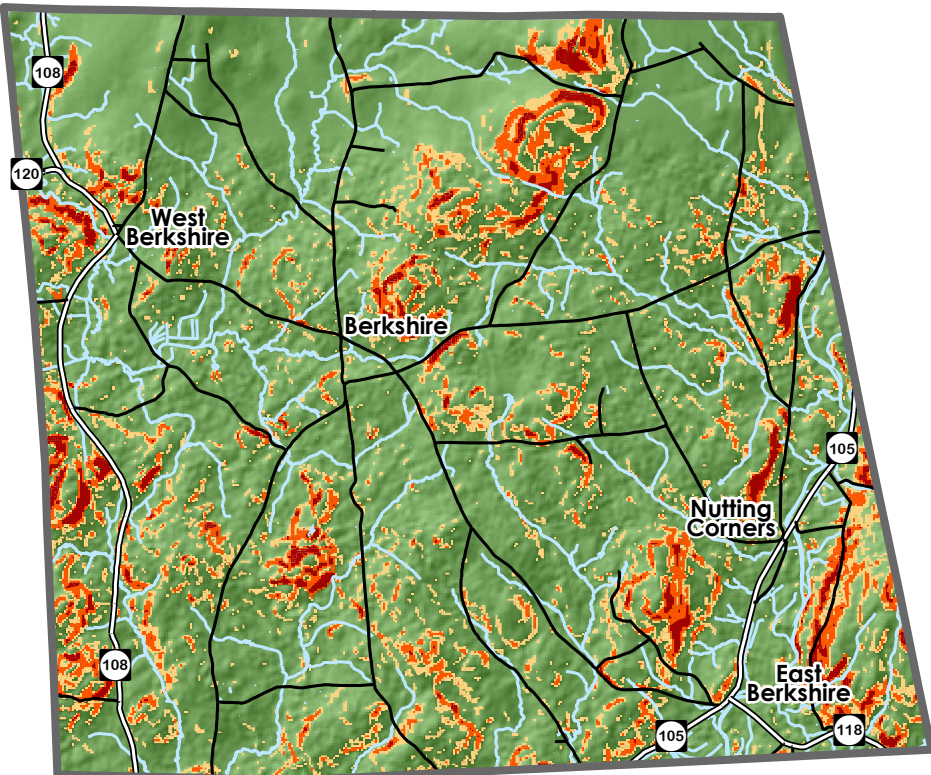
Sand -
Good Potential

Sand -
Fair Potential



Ground Water
Source Protection
Area

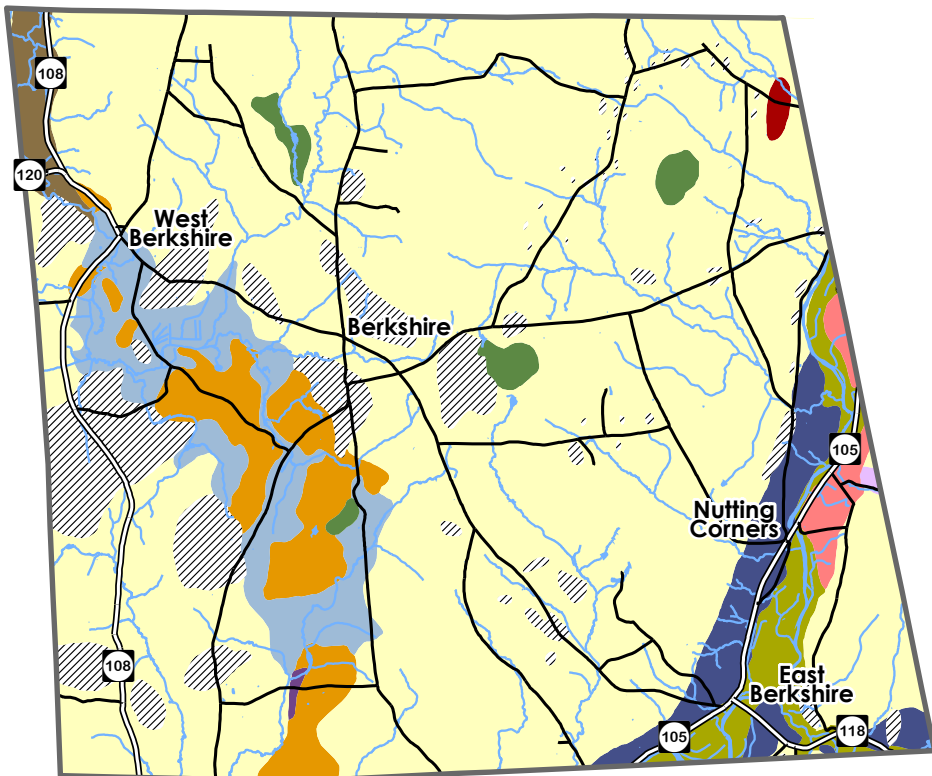




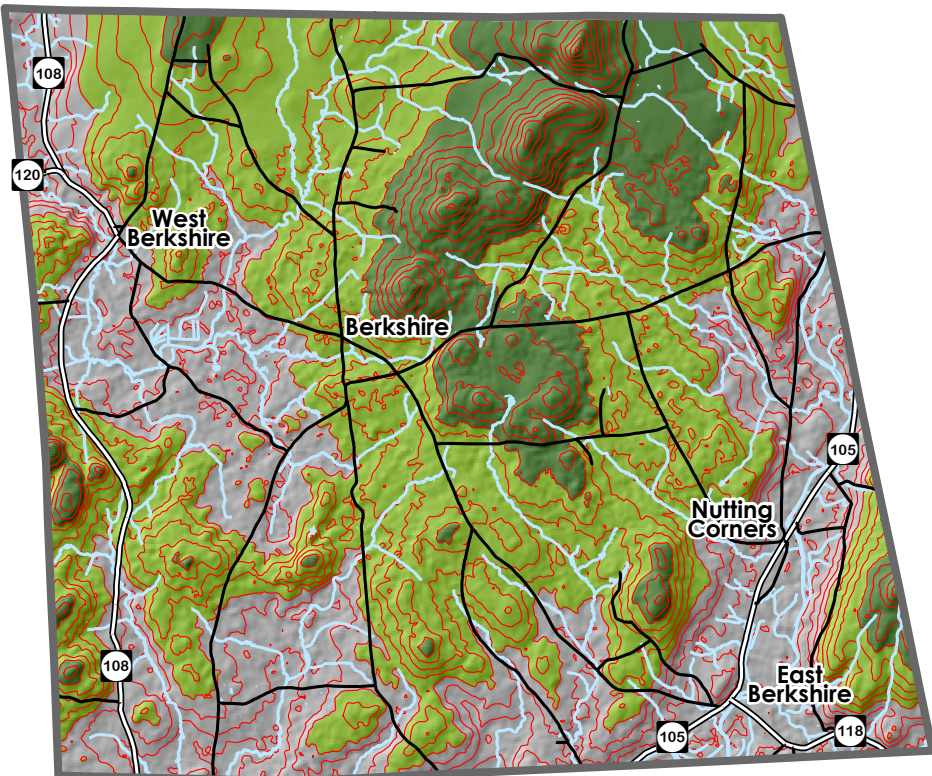
Slopes 15%

Slopes 20%

Slopes 25%



- Alluvium
- Bedrock Exposure
- Delta Gravel
- Esker
- Isolated Kame
- Kame Terrace
- Lake Sand
- Marine Sand
- Pebbly Sand
- Silt, Silty & Clay
- Swamp, Peat and/or Muck
- Till



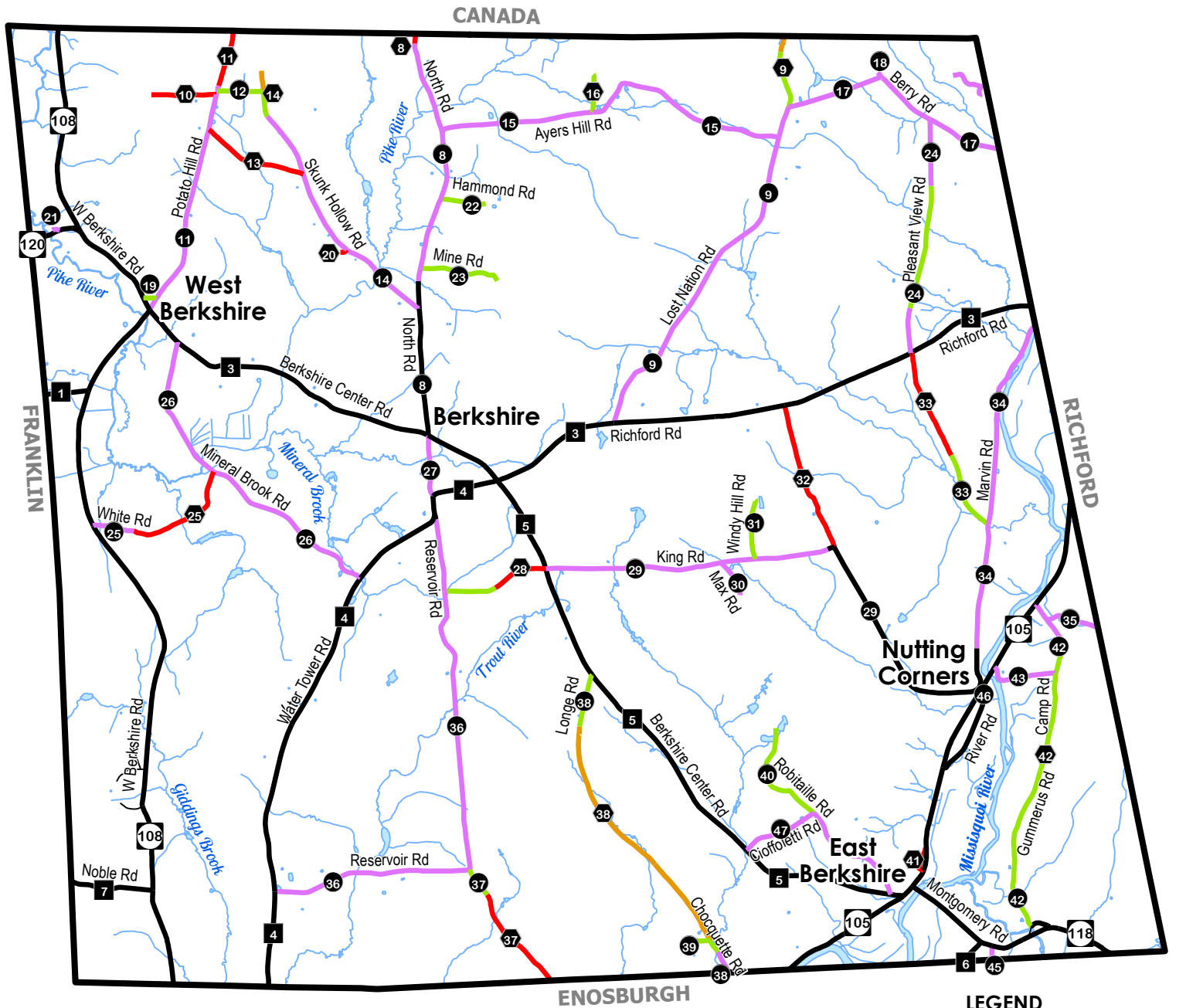
— 50 foot
contour

Less than
600 feet

600 feet
to 800 feet

800 feet
or more

TRANSPORTATION MAP



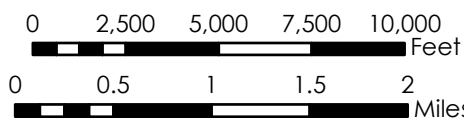
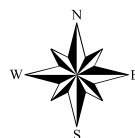
Vermont Coordinate System
Transverse Mercator, NAD 83.
For planning purposes only.



Prepared by:
Northwest Regional
Planning Commission
75 Fairfield Street
St. Albans, VT 05478
(802) 524-5958
www.nrpcvt.com
February, 2020.

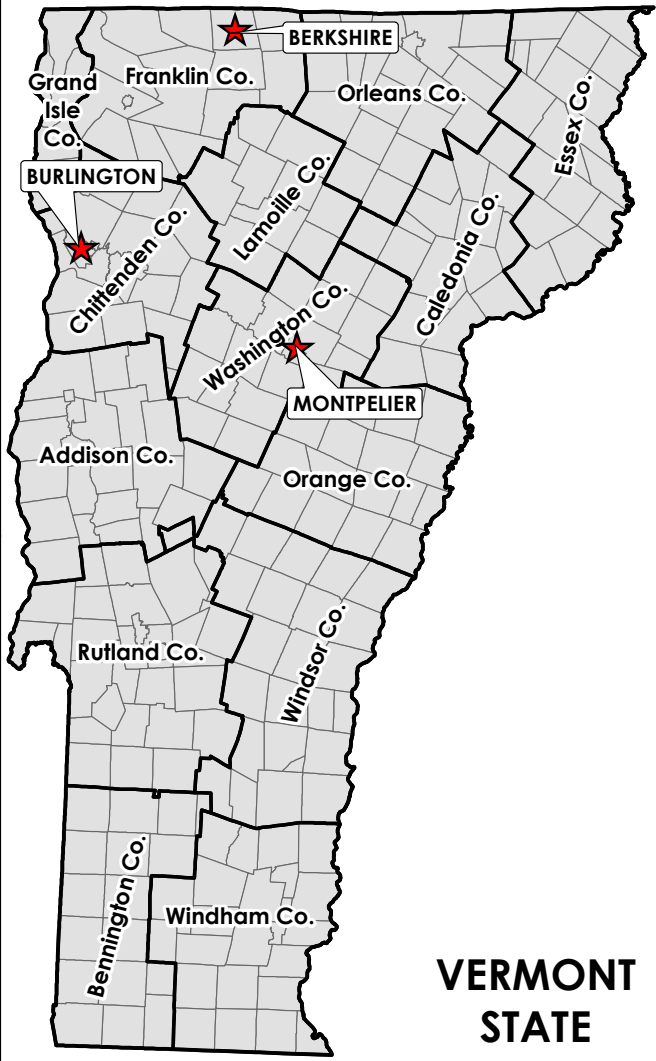
Data Sources: All map features
derived from VGIS digital coverages.
North arrow on map refers to Grid North.

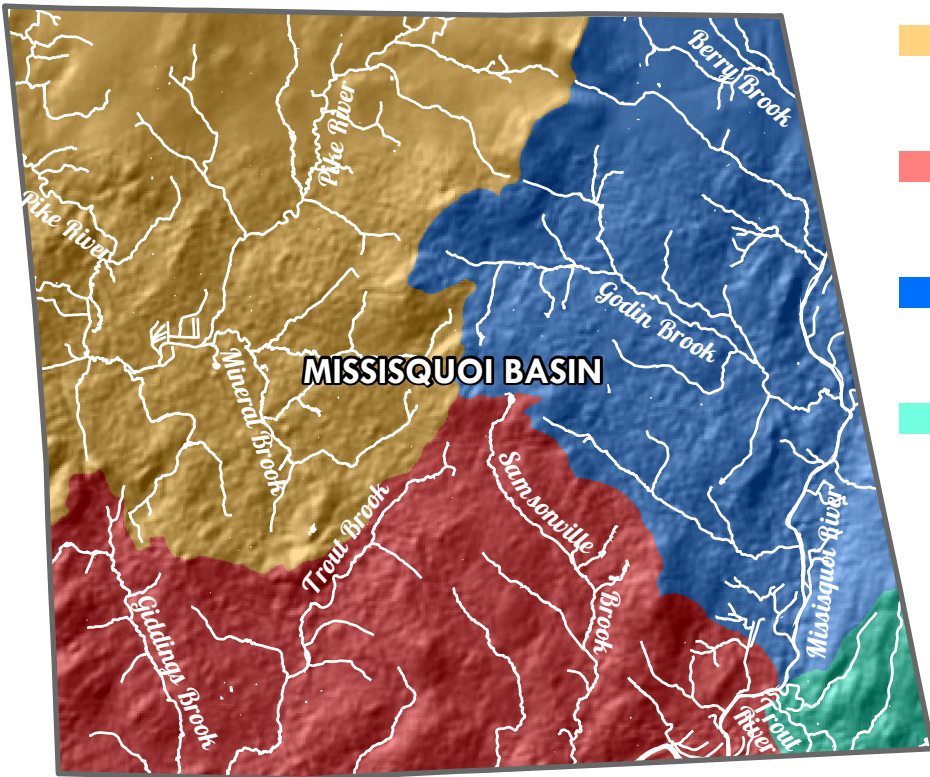
Location: z:\gis\projects\county\
franklin\berkshire\townplan2020



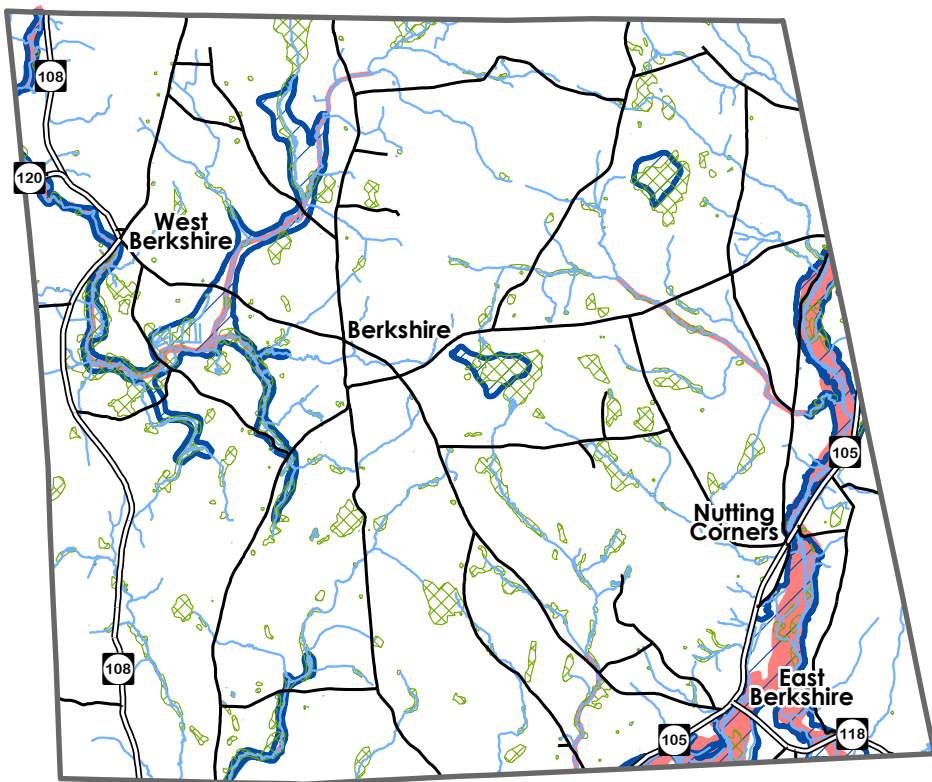
LEGEND

- State Highway
- Class 2 Town Highway
- Class 3 Town Highway
- Class 4 Town Highway
- Surfaced Road
- Gravel Road
- Soil or Graded & Drained Road
- Unimproved/Primitive Road
- Impassable/Untraveled Road
- Unknown Road Surface Type
- Town Boundary
- Stream or Brook
- Lake or Pond





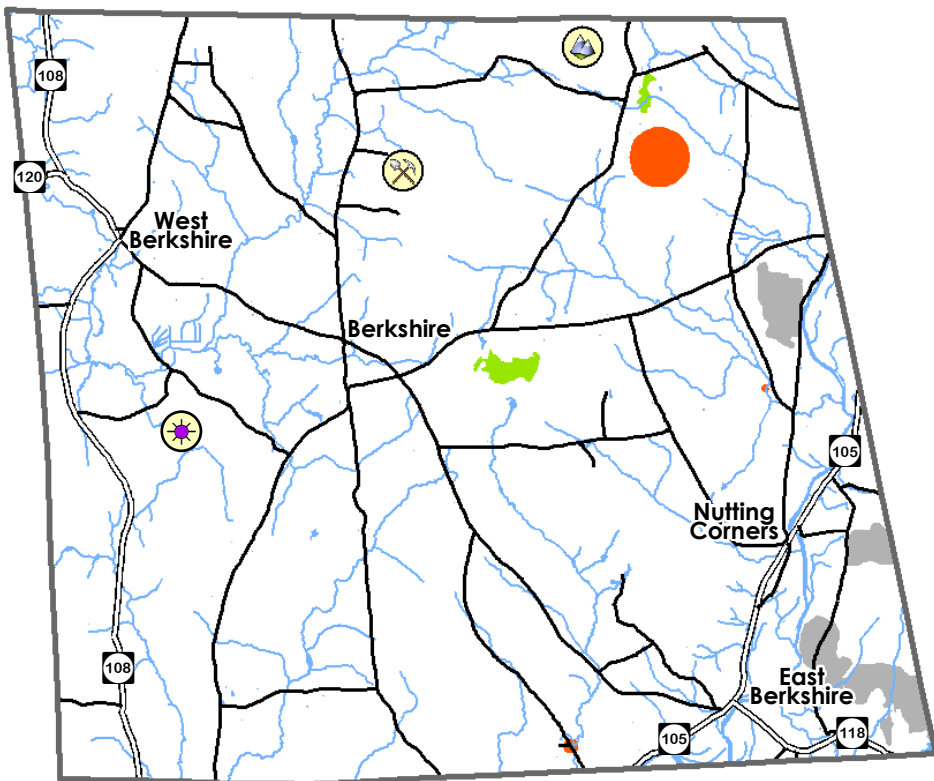
-  Pike River:
headwaters
to mouth
-  Missisquoi River:
Trout River
to Tyler Branch
-  Missisquoi River:
Canadian border
to Trout River
-  Trout River from
Black Falls Brook
to Missisquoi River



 River
Corridor

 100 Year
Flood Zone

 Wetland



Ayers Hill



Berkshire
Copper Mine



Berkshire
Kettle Hole



Rare,
Threatened
or Endangered
Species



Significant
Natural
Community



Deer
Wintering
Areas