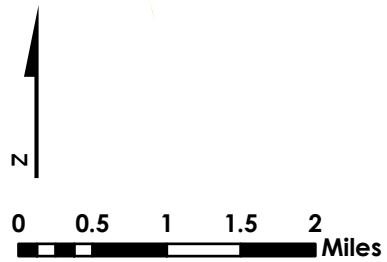
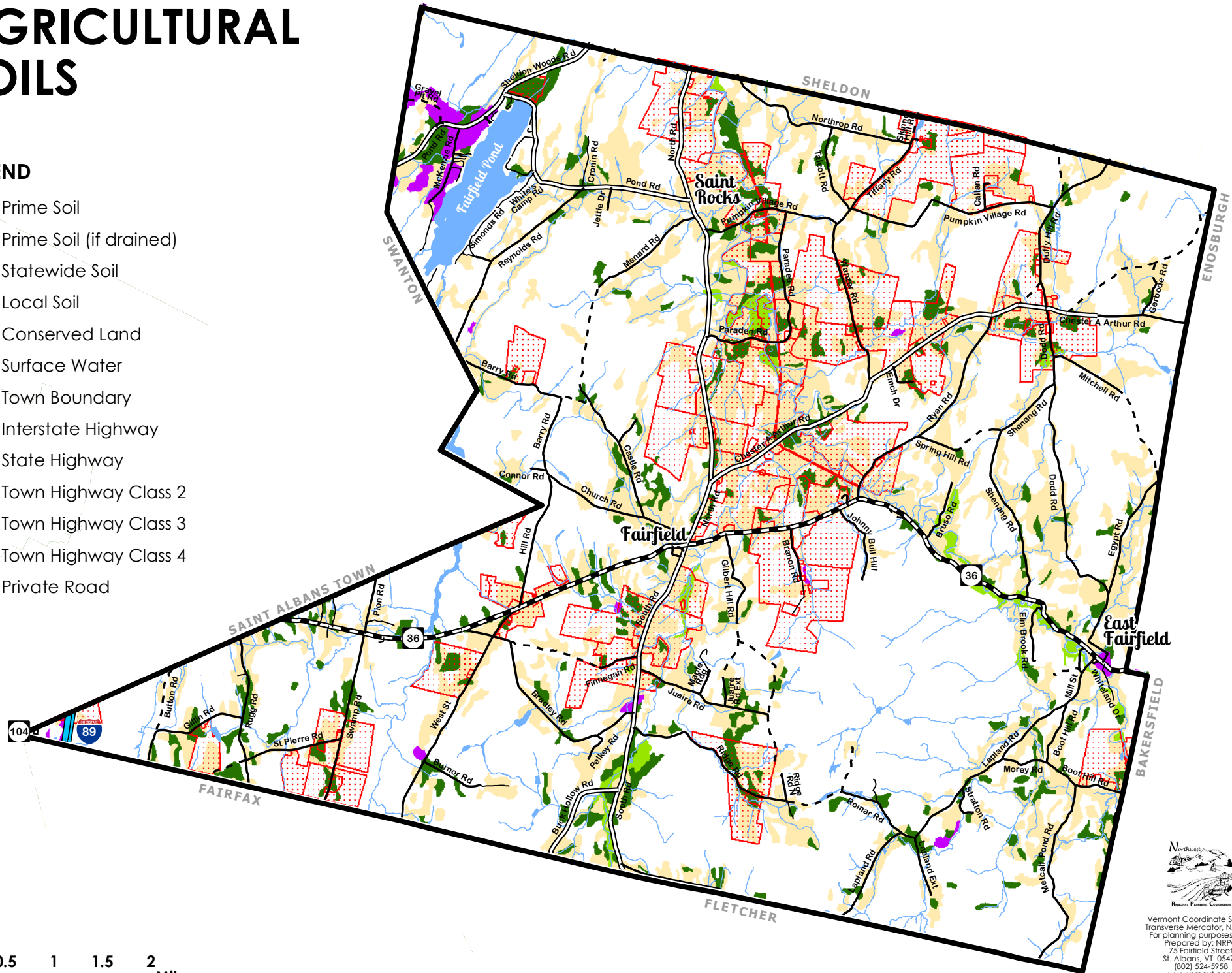


AGRICULTURAL SOILS

LEGEND

- Prime Soil
- Prime Soil (if drained)
- Statewide Soil
- Local Soil
- Conserved Land
- Surface Water
- Town Boundary
- Interstate Highway
- State Highway
- Town Highway Class 2
- Town Highway Class 3
- Town Highway Class 4
- Private Road



Location: Z:/GIS/Projects/County/Franklin/Fairfield/Townplan2020

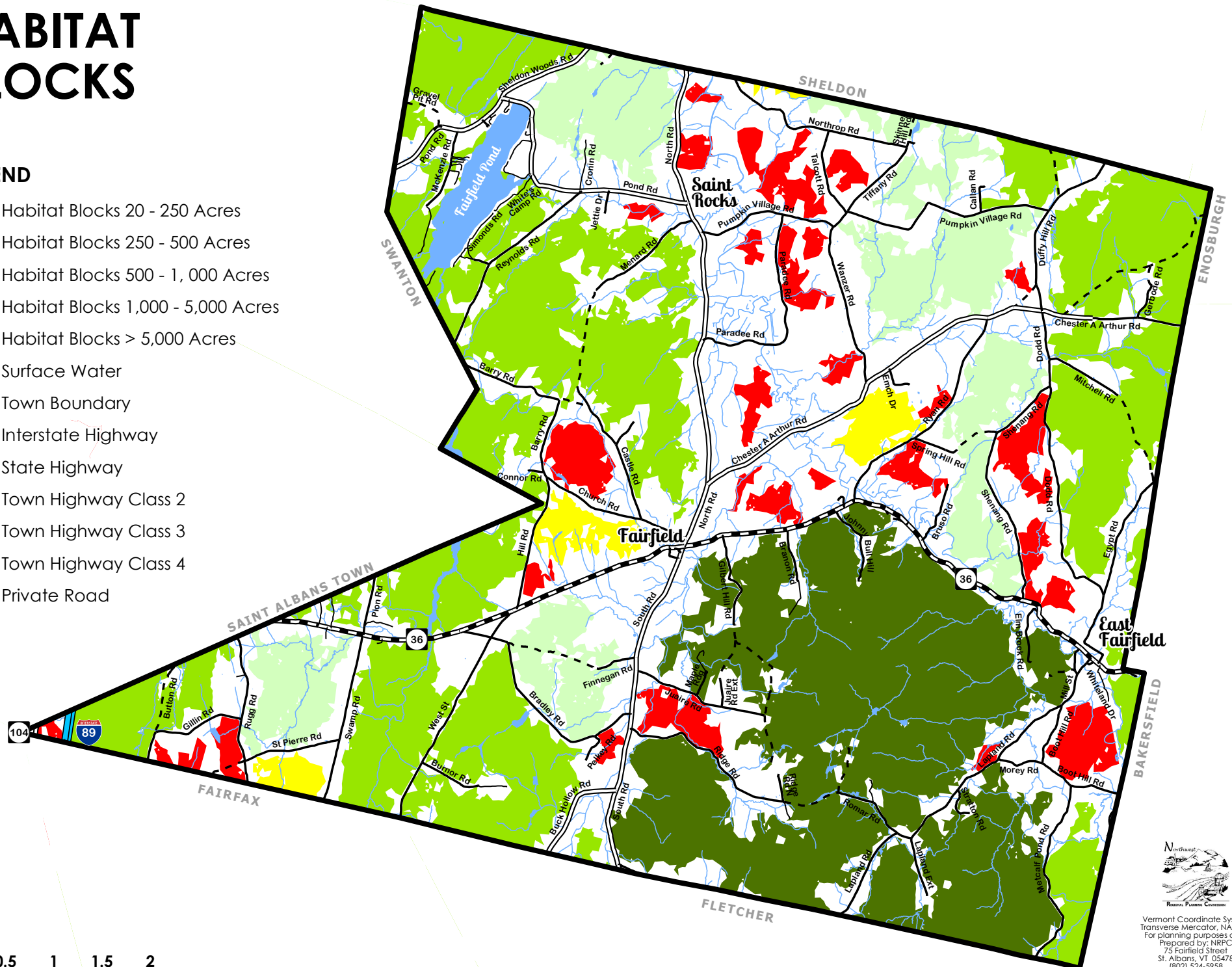


Vermont Coordinate System
 Transverse Mercator, NAD 83.
 For planning purposes only.
 Prepared by: NRPC
 75 Fairfield Street
 St. Albans, VT 05478
 (802) 524-5958
 www.nrpcvt.com
 February, 2020.

HABITAT BLOCKS

LEGEND

- Habitat Blocks 20 - 250 Acres
- Habitat Blocks 250 - 500 Acres
- Habitat Blocks 500 - 1, 000 Acres
- Habitat Blocks 1,000 - 5,000 Acres
- Habitat Blocks > 5,000 Acres
- Surface Water
- Town Boundary
- Interstate Highway
- State Highway
- Town Highway Class 2
- Town Highway Class 3
- Town Highway Class 4
- Private Road








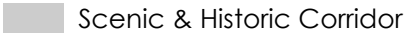







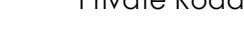
Location: Z:/GIS/Projects/County/Franklin/Fairfield/Townplan2020

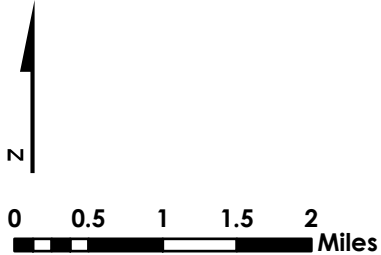
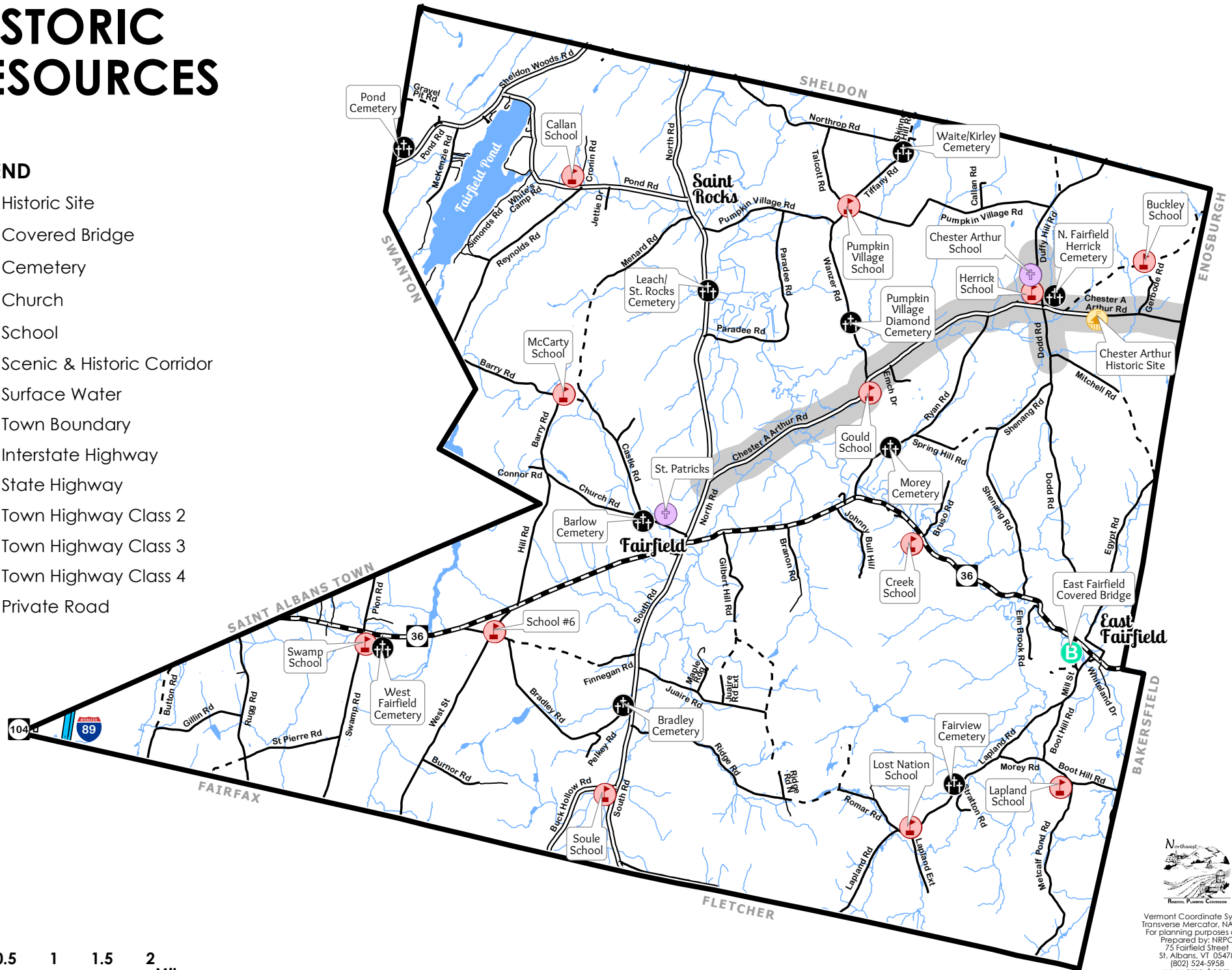


Vermont Coordinate System
 Transverse Mercator, NAD 83.
 For planning purposes only.
 Prepared by: NRPC
 75 Fairfield Street
 St. Albans, VT 05478
 (802) 524-5958
 www.nrpcvt.com
 February, 2020.

HISTORIC RESOURCES

LEGEND

-  Historic Site
-  Covered Bridge
-  Cemetery
-  Church
-  School
-  Scenic & Historic Corridor
-  Surface Water
-  Town Boundary
-  Interstate Highway
-  State Highway
-  Town Highway Class 2
-  Town Highway Class 3
-  Town Highway Class 4
-  Private Road



Location: Z:/GIS/Projects/County/Franklin/Fairfield/Townplan2020

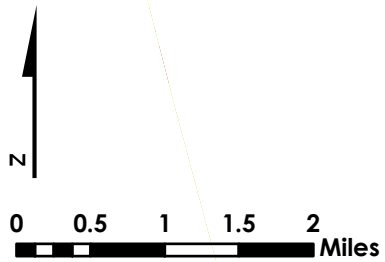
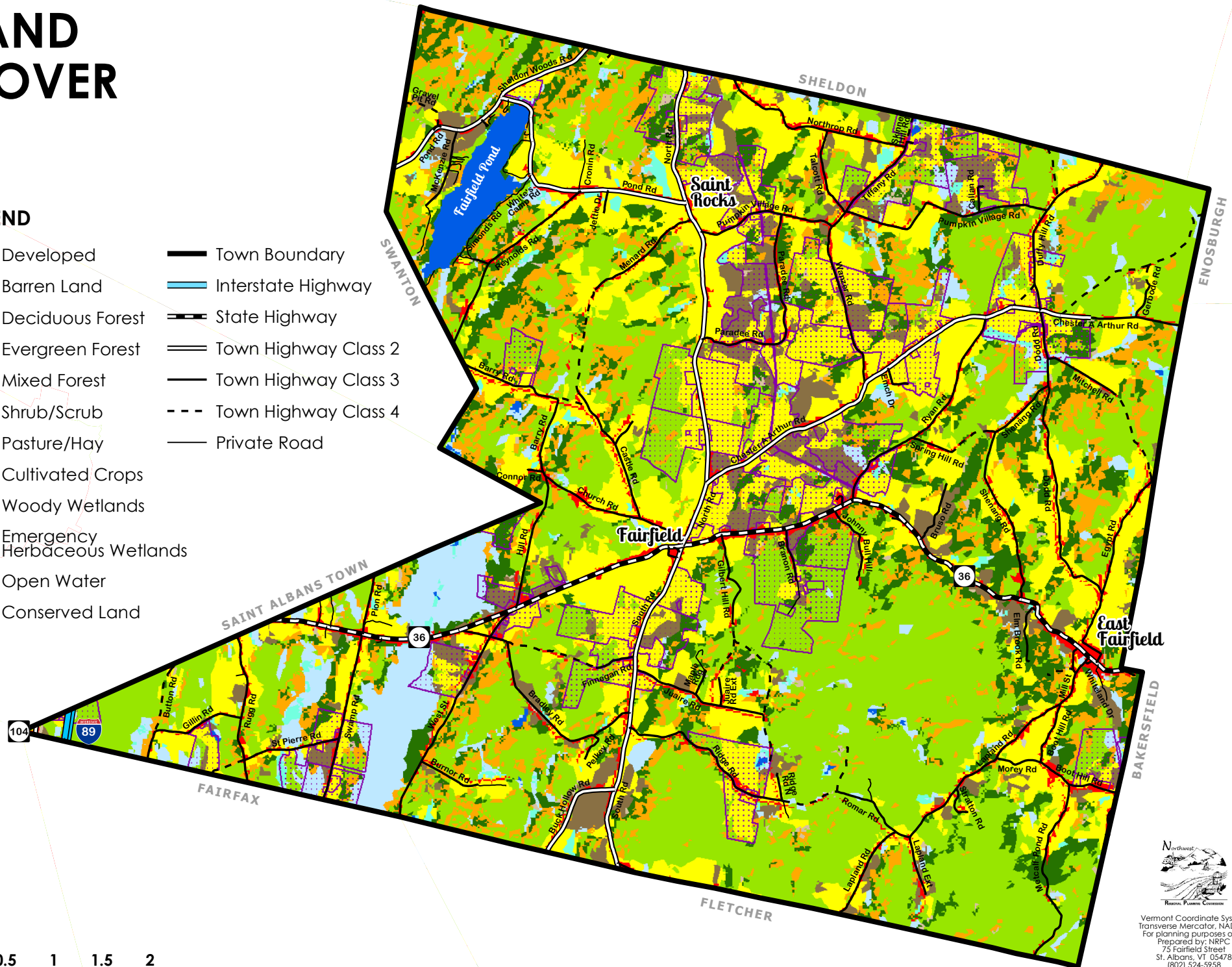


Vermont Coordinate System
 Transverse Mercator, NAD 83.
 For planning purposes only.
 Prepared by: NRPC
 75 Fairfield Street
 St. Albans, VT 05478
 (802) 524-5958
 www.nrpcvt.com
 February, 2020.

LAND COVER

LEGEND

- | | | | |
|---|-------------------------------|---|----------------------|
|  | Developed |  | Town Boundary |
|  | Barren Land |  | Interstate Highway |
|  | Deciduous Forest |  | State Highway |
|  | Evergreen Forest |  | Town Highway Class 2 |
|  | Mixed Forest |  | Town Highway Class 3 |
|  | Shrub/Scrub |  | Town Highway Class 4 |
|  | Pasture/Hay |  | Private Road |
|  | Cultivated Crops | | |
|  | Woody Wetlands | | |
|  | Emergency Herbaceous Wetlands | | |
|  | Open Water | | |
|  | Conserved Land | | |



Location: Z:\GIS\Projects\County\Franklin\Fairfield\Townplan2020

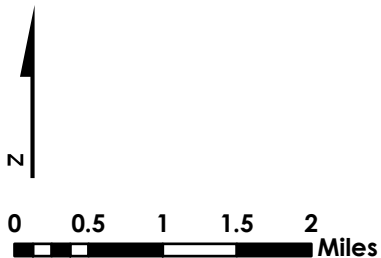
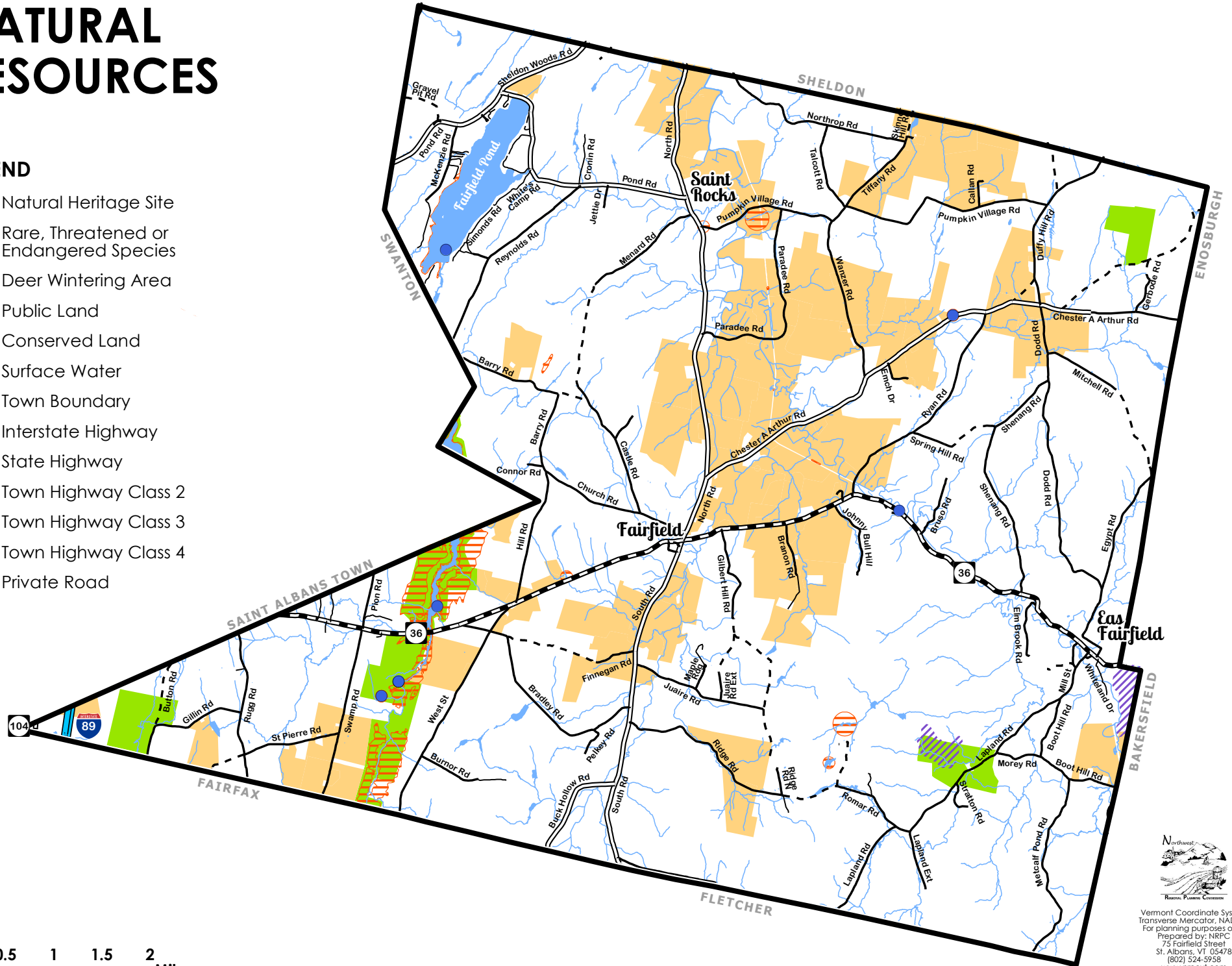


Vermont Coordinate System
 Transverse Mercator, NAD 83.
 For planning purposes only.
 Prepared by: NRPC
 75 Fairfield Street
 St. Albans, VT 05478
 (802) 524-5958
 www.nrpcvt.com
 February, 2020.

NATURAL RESOURCES

LEGEND

- Natural Heritage Site
- Rare, Threatened or Endangered Species
- Deer Wintering Area
- Public Land
- Conserved Land
- Surface Water
- Town Boundary
- Interstate Highway
- State Highway
- Town Highway Class 2
- Town Highway Class 3
- Town Highway Class 4
- Private Road



Location: Z:/GIS/Projects/County/Franklin/Fairfield/Townplan2020

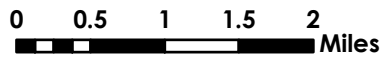
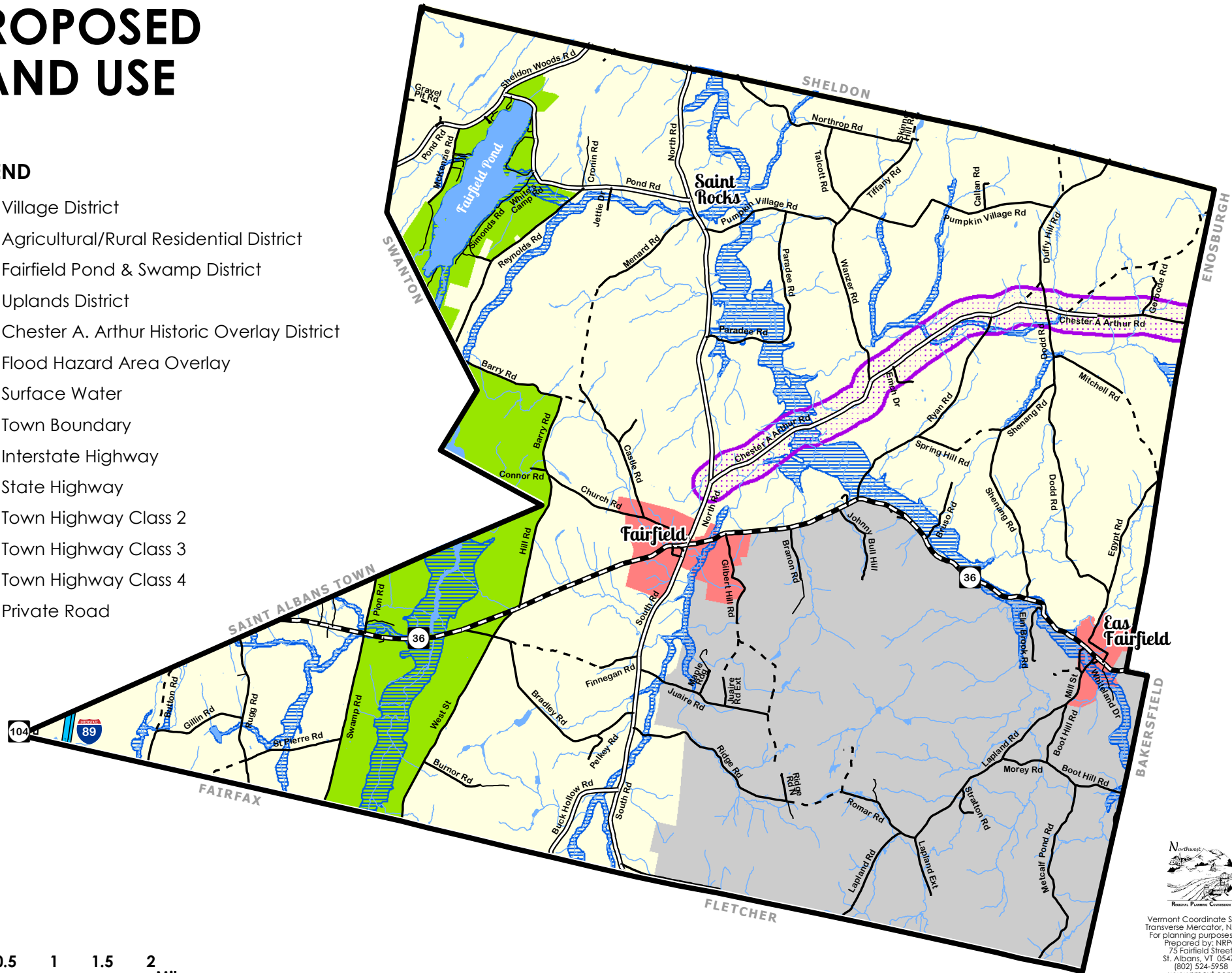


Vermont Coordinate System
 Transverse Mercator, NAD 83.
 For planning purposes only.
 Prepared by: NRPC
 75 Fairfield Street
 St. Albans, VT 05478
 (802) 524-5958
 www.nrpcvt.com
 February, 2020.

PROPOSED LAND USE

LEGEND

- Village District
- Agricultural/Rural Residential District
- Fairfield Pond & Swamp District
- Uplands District
- Chester A. Arthur Historic Overlay District
- Flood Hazard Area Overlay
- Surface Water
- Town Boundary
- Interstate Highway
- State Highway
- Town Highway Class 2
- Town Highway Class 3
- Town Highway Class 4
- Private Road

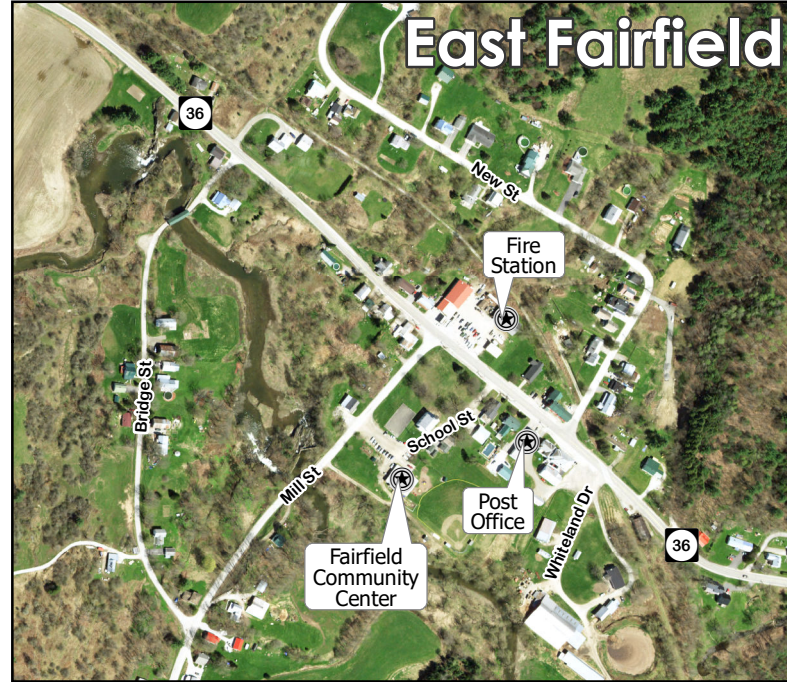
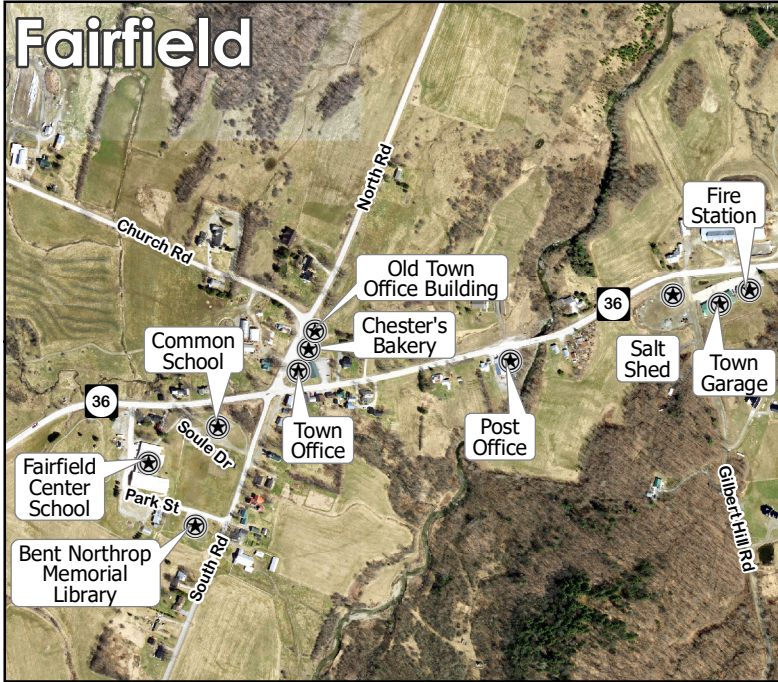


Location: Z:/GIS/Projects/County/Franklin/Fairfield/Townplan2020



Vermont Coordinate System
 Transverse Mercator, NAD 83.
 For planning purposes only.
 Prepared by: NRPC
 75 Fairfield Street
 St. Albans, VT 05478
 (802) 524-5958
 www.nrpcvt.com
 February, 2020.

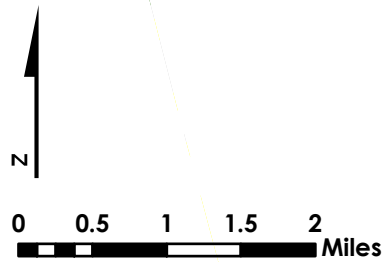
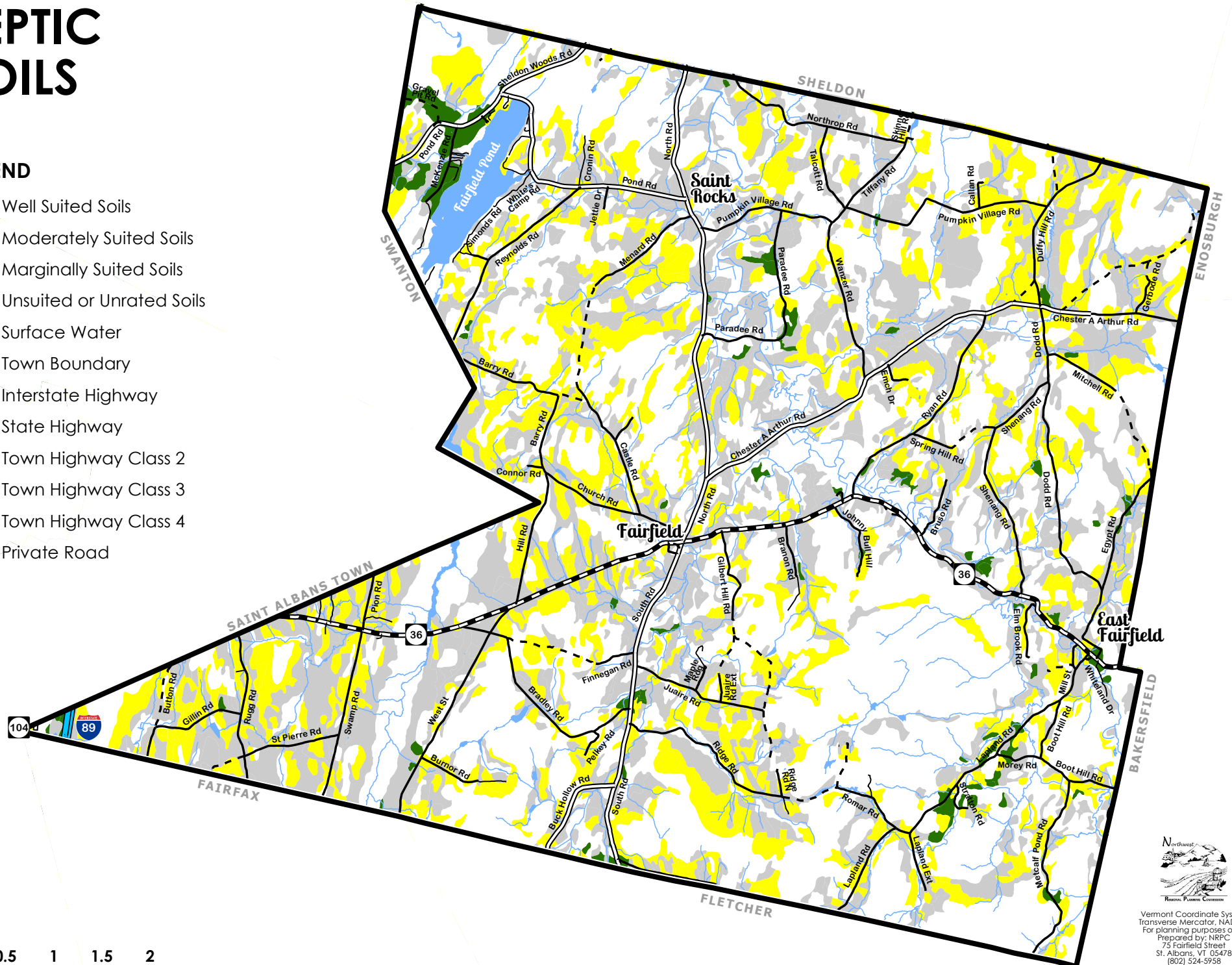
PUBLIC FACILITIES



SEPTIC SOILS

LEGEND

- Well Suited Soils
- Moderately Suited Soils
- Marginally Suited Soils
- Unsited or Unrated Soils
- Surface Water
- Town Boundary
- Interstate Highway
- State Highway
- Town Highway Class 2
- Town Highway Class 3
- Town Highway Class 4
- Private Road






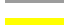


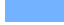






Location: Z:/GIS/Projects/County/Franklin/Fairfield/Townplan2020

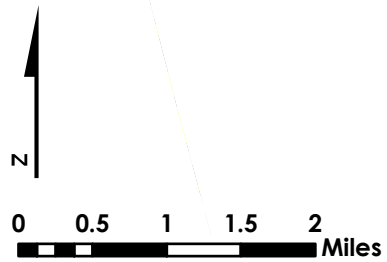
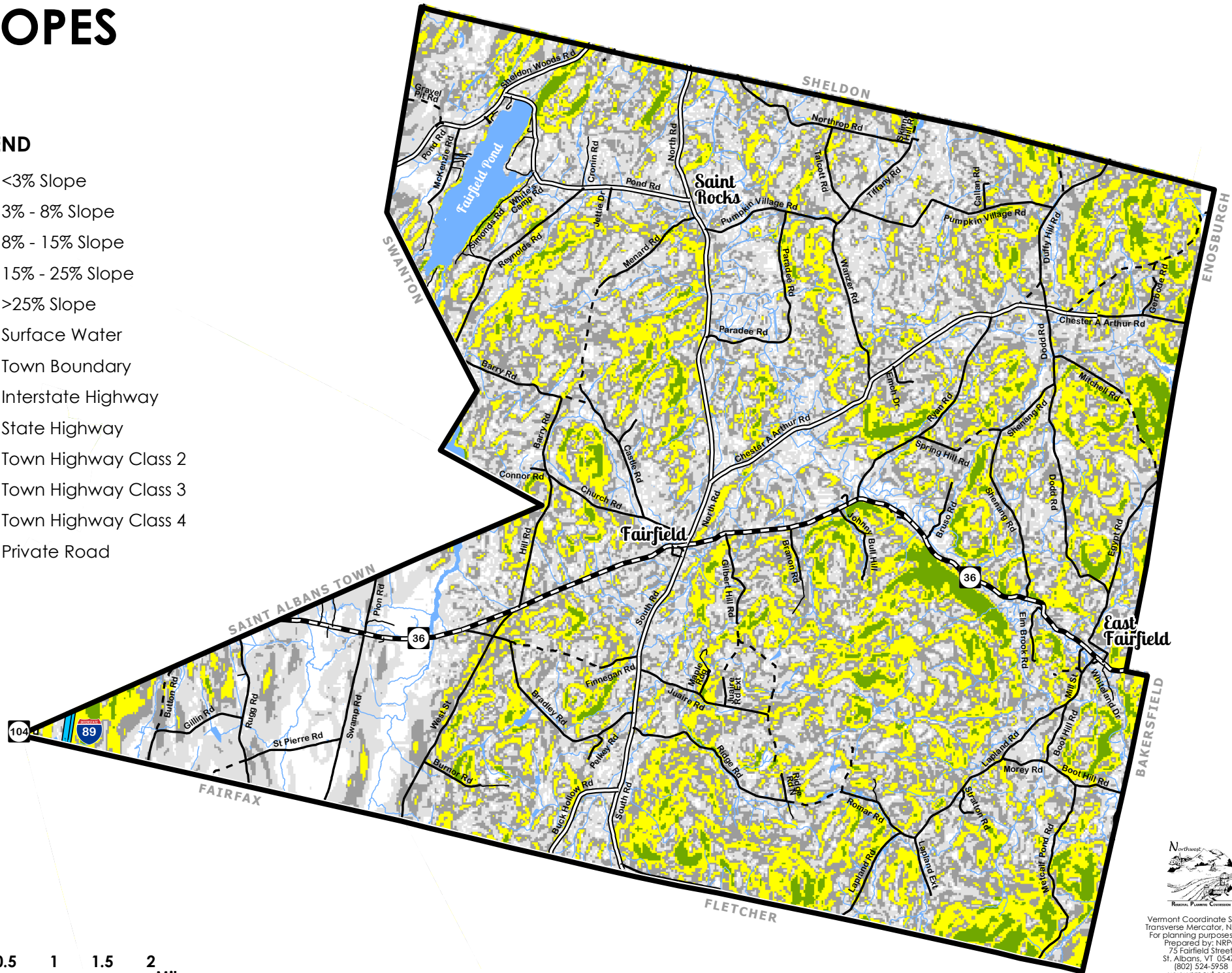


Vermont Coordinate System
 Transverse Mercator, NAD 83.
 For planning purposes only.
 Prepared by: NRPC
 75 Fairfield Street
 St. Albans, VT 05478
 (802) 524-5958
 www.nrpcvt.com
 February, 2020.

SLOPES

LEGEND

-  <3% Slope
-  3% - 8% Slope
-  8% - 15% Slope
-  15% - 25% Slope
-  >25% Slope
-  Surface Water
-  Town Boundary
-  Interstate Highway
-  State Highway
-  Town Highway Class 2
-  Town Highway Class 3
-  Town Highway Class 4
-  Private Road















Location: Z:/GIS/Projects/County/Franklin/Fairfield/Townplan2020

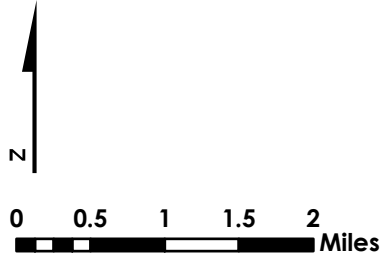
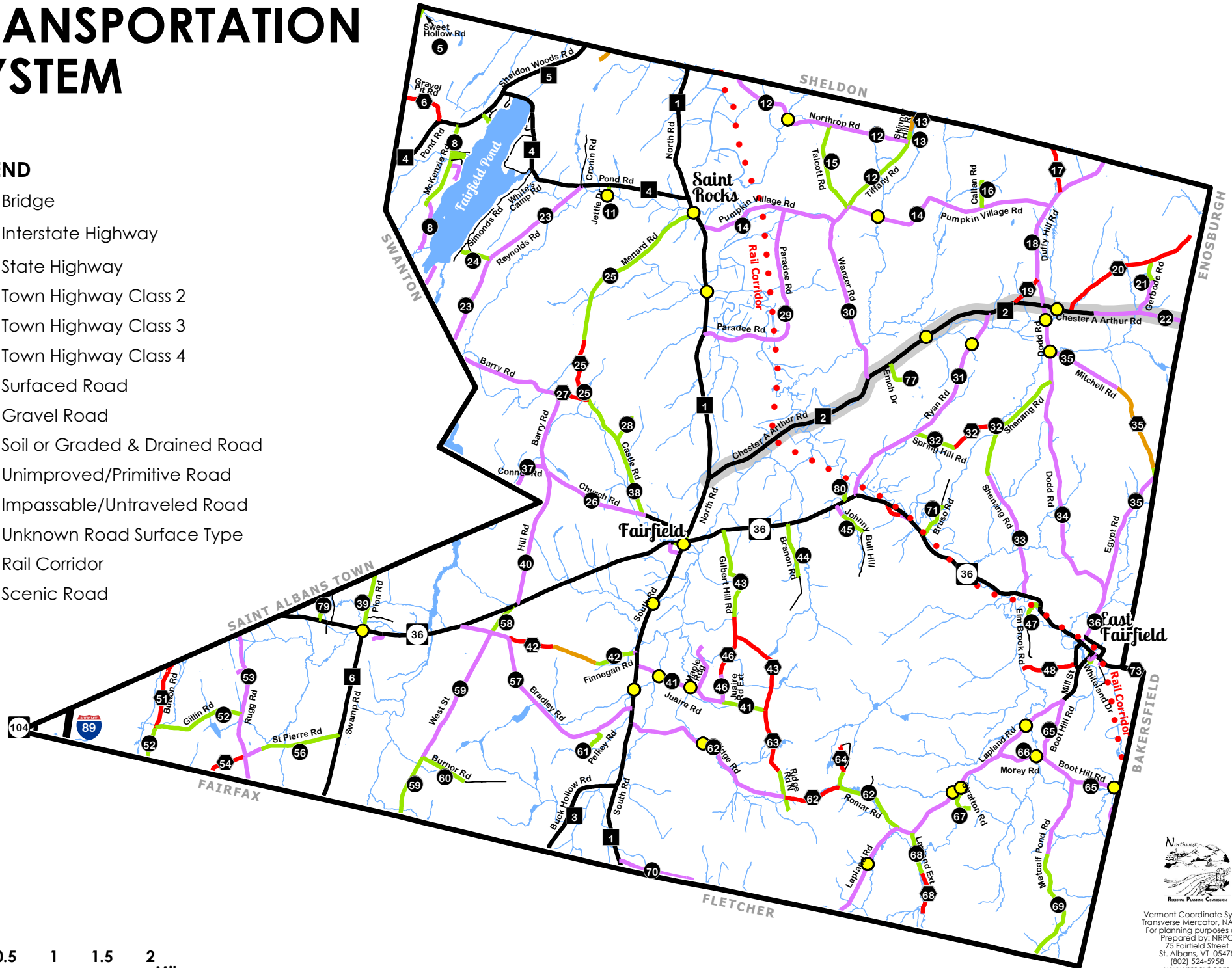


Vermont Coordinate System
 Transverse Mercator, NAD 83.
 For planning purposes only.
 Prepared by: NRPC
 75 Fairfield Street
 St. Albans, VT 05478
 (802) 524-5958
 www.nrpcvt.com
 February, 2020.

TRANSPORTATION SYSTEM

LEGEND

-  Bridge
-  Interstate Highway
-  State Highway
-  Town Highway Class 2
-  Town Highway Class 3
-  Town Highway Class 4
-  Surfaced Road
-  Gravel Road
-  Soil or Graded & Drained Road
-  Unimproved/Primitive Road
-  Impassable/Untraveled Road
-  Unknown Road Surface Type
-  Rail Corridor
-  Scenic Road





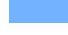

Location: Z:/GIS/Projects/County/Franklin/Fairfield/Townplan2020

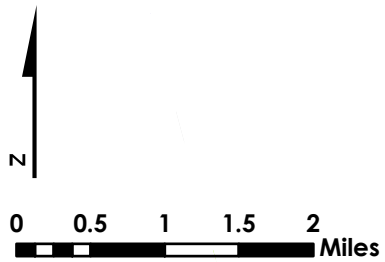
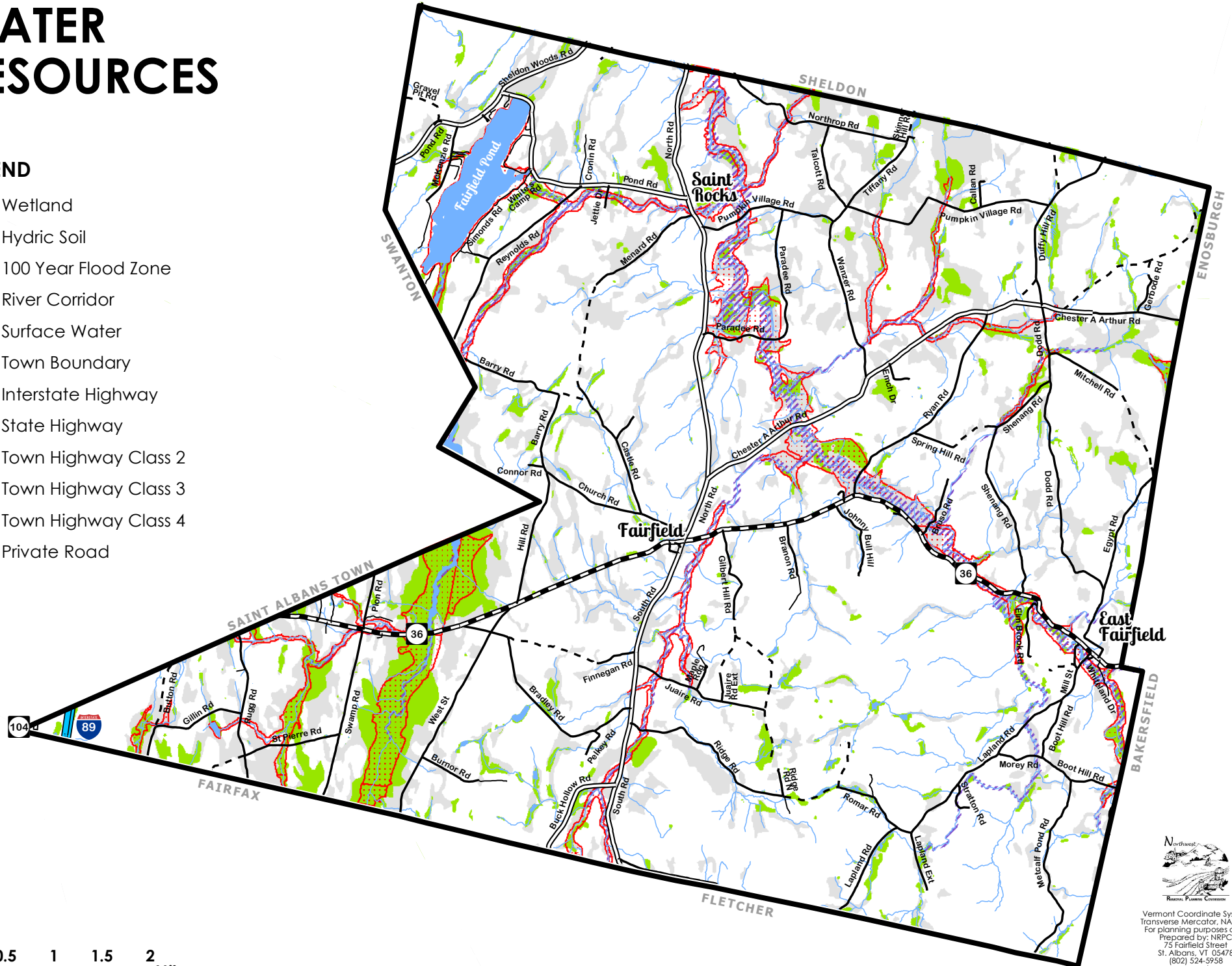


Vermont Coordinate System
 Transverse Mercator, NAD 83.
 For planning purposes only.
 Prepared by: NRPC
 75 Fairfield Street
 St. Albans, VT 05478
 (802) 524-5958
 www.nrpcvt.com
 February, 2020.

WATER RESOURCES

LEGEND

-  Wetland
-  Hydric Soil
-  100 Year Flood Zone
-  River Corridor
-  Surface Water
-  Town Boundary
-  Interstate Highway
-  State Highway
-  Town Highway Class 2
-  Town Highway Class 3
-  Town Highway Class 4
-  Private Road

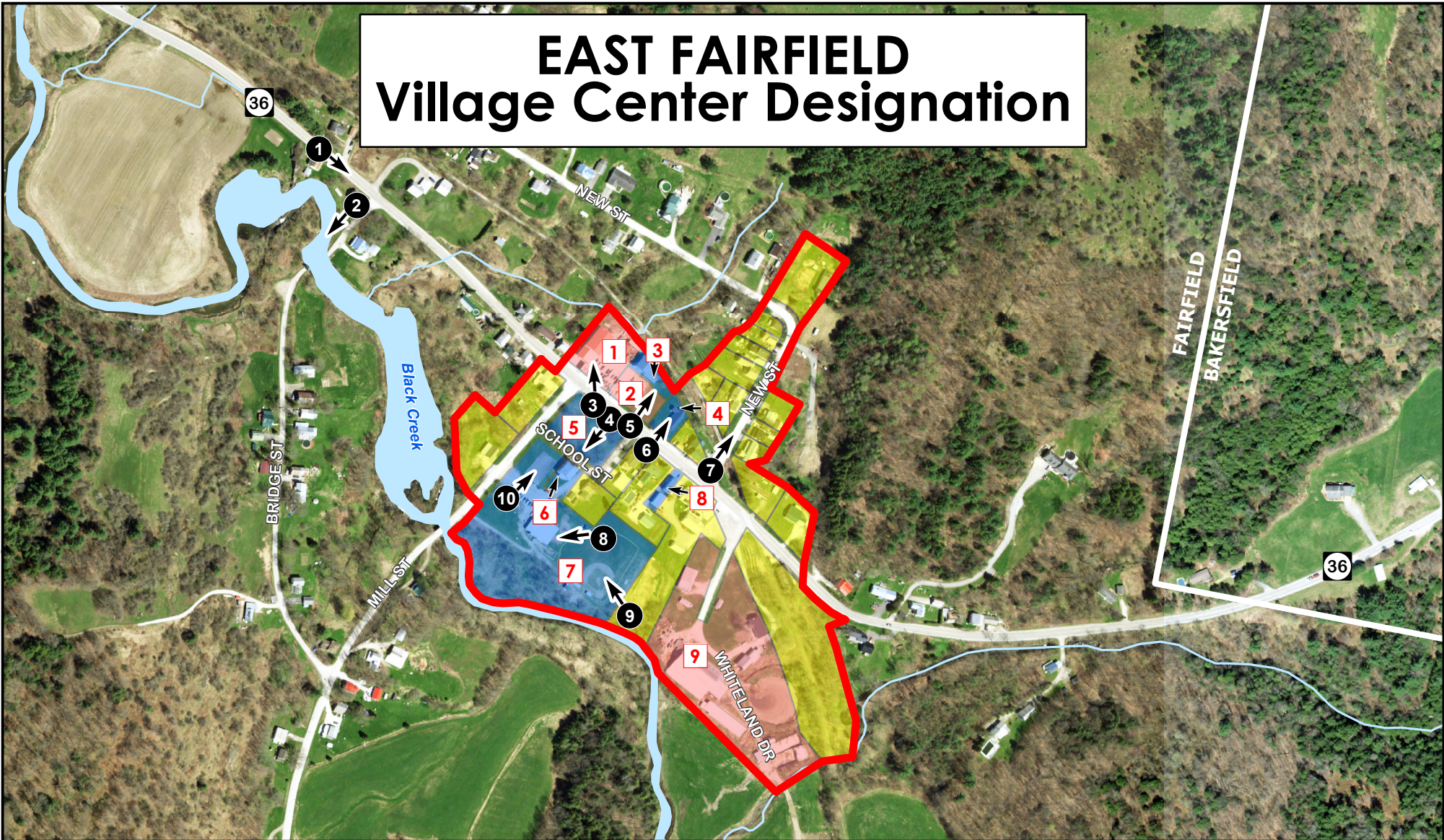


Location: Z:/GIS/Projects/County/Franklin/Fairfield/Townplan2020



Vermont Coordinate System
 Transverse Mercator, NAD 83.
 For planning purposes only.
 Prepared by: NRPC
 75 Fairfield Street
 St. Albans, VT 05478
 (802) 524-5958
 www.nrpcvt.com
 February, 2020.

EAST FAIRFIELD Village Center Designation



1 Stone's Store

2 Consolidated Communications

3 Fire Department

4 St. Anthony's Catholic Church

5 Town Green

6 Meeting House on the Green

7 Community Center

8 Post Office

9 White's Farm

10 Photo Locations

 Village Designation Boundary

 Commercial

 Public

 Residential

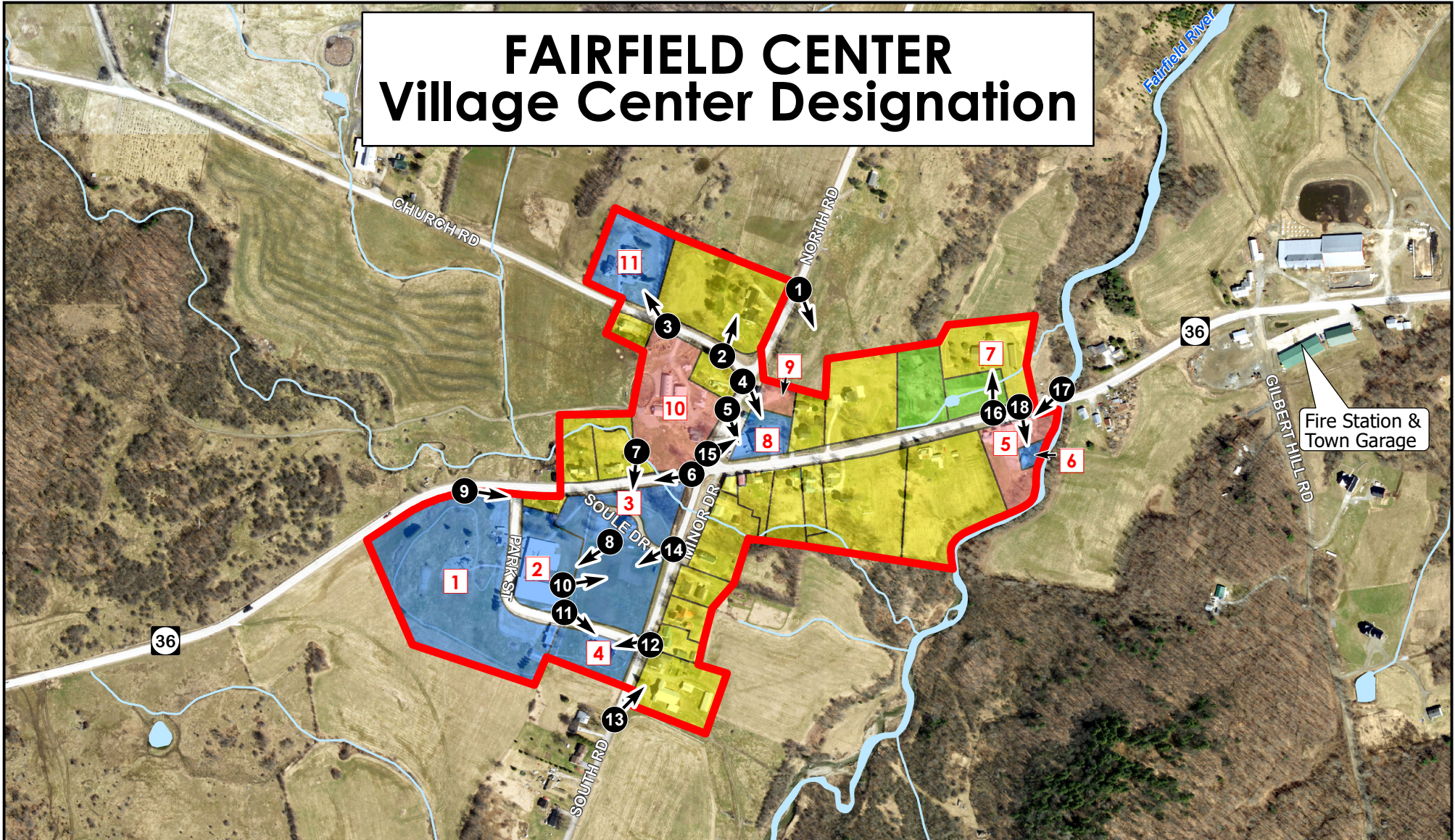


Vermont Coordinate System
Transverse Mercator, NAD 83.
For planning purposes only.
Prepared by:
NRPC
75 Fairfield Street
St. Albans, VT 05478
802-524-5958
www.nrpcvt.com
December, 2020.



0 100 200 300 400
Feet

FAIRFIELD CENTER Village Center Designation

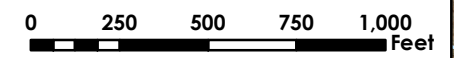


- 1** Fairfield Recreation Complex
- 2** Fairfield Center School
- 3** Common School
- 4** Bent Northrop Memorial Library
- 5** Fairfield Market
- 6** Post Office
- 7** Chester Arthur Apartments
- 8** Fairfield Municipal Building
- 9** Chester's Restaurant
- 10** Menard's Farm
- 11** St. Patrick's Catholic Church
- 1** Photo Locations

- Village Designation Boundary
- Commercial
- Public
- Residential
- Open



Vermont Coordinate System
 Transverse Mercator, NAD 83.
 For planning purposes only.
 Prepared by:
 NRPC
 75 Fairfield Street
 St. Albans, VT 05478
 802-524-5958
 www.nrpcvt.com
 December, 2020.

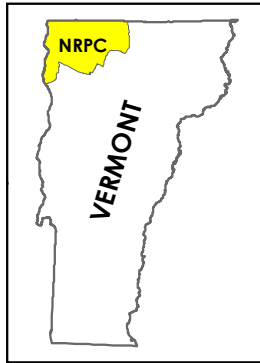


Utility Service Areas

Fairfield, Vermont Act 174

The Energy Development Improvement Act of 2016

This map and the corresponding data is intended to be used to inform energy planning efforts by municipalities and regions. This may also be used for conceptual planning or initial site identification by those interested in developing renewable energy infrastructure. The maps do **NOT** take the place of site-specific investigation for a proposed facility and cannot be used as "siting maps."



Legend

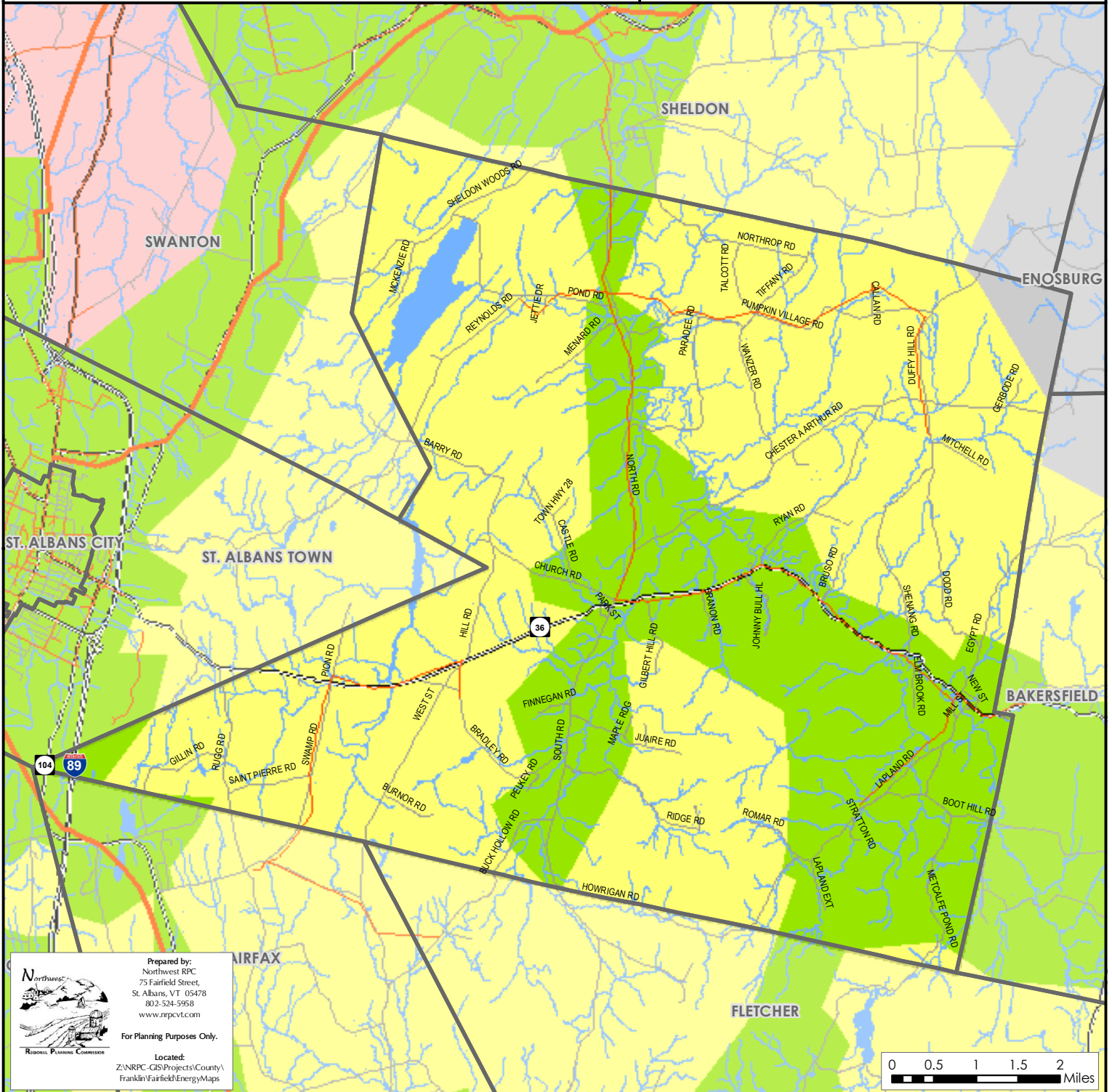
Map C.1

Utility Service Area Features

- Green Mountain Power
- Swanton Village Electric
- Vermont Electric Co-op
- Enosburg Falls Electric
- Substation
- 3 Phase Power Line
- Transmission Line

Sources: VCGI

Disclaimer: The accuracy of information presented is determined by its sources. Errors and omissions may exist. The Northwest RPC is not responsible for these. Questions of on-the-ground location can be resolved by site inspections and/or surveys by a registered surveyor. This map is not sufficient for delineation of features on-the-ground. This map identifies the presence of features, and may indicate relationships between features, but is not a replacement for surveyed information or engineering studies.





 Prepared by:
 Northwest RPC
 75 Fairfield Street,
 St. Albans, VT 05478
 802-524-5958
 www.nrpcvt.com
 For Planning Purposes Only.
 Located:
 Z:\NRPC_GIS\Projects\County\Franklin\Fairfield\EnergyMaps

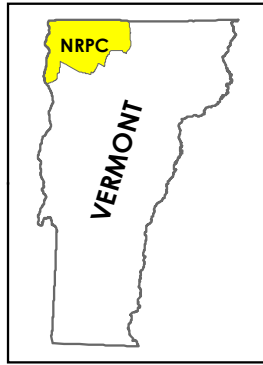


Transmission & 3 Phase Power Infrastructure

Fairfield, Vermont
Act 174

The Energy Development Improvement Act of 2016

This map and the corresponding data is intended to be used to inform energy planning efforts by municipalities and regions. This may also be used for conceptual planning or initial site identification by those interested in developing renewable energy infrastructure. The maps do **NOT** take the place of site-specific investigation for a proposed facility and cannot be used as "siting maps."



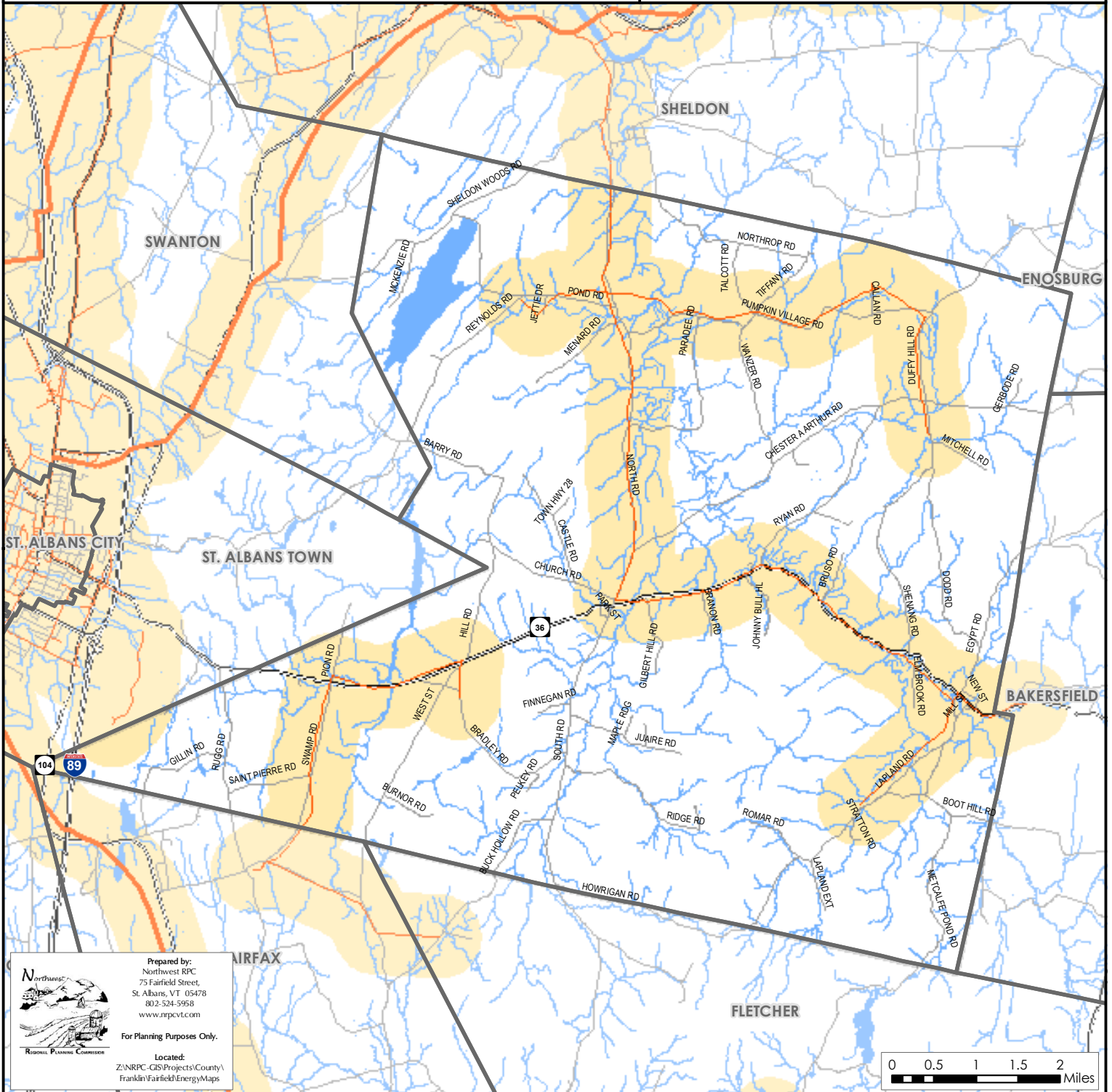
Legend

- Substation
- 3 Phase Power Line
- Transmission Line
- 1/2 Mile Buffer (3 Phase Power Line & Transmission Line)

Map C.2

Sources: VCGI

Disclaimer: The accuracy of information presented is determined by its sources. Errors and omissions may exist. The Northwest RPC is not responsible for these. Questions of on-the-ground location can be resolved by site inspections and/or surveys by a registered surveyor. This map is not sufficient for delineation of features on-the-ground. This map identifies the presence of features, and may indicate relationships between features, but is not a replacement for surveyed information or engineering studies.




 Prepared by:
 Northwest RPC
 75 Fairfield Street,
 St. Albans, VT 05478
 802-524-5958
 www.nrpcvt.com
 For Planning Purposes Only.

Located:
 Z:\NRPC_GIS\Projects\County\Franklin\Fairfield\EnergyMaps

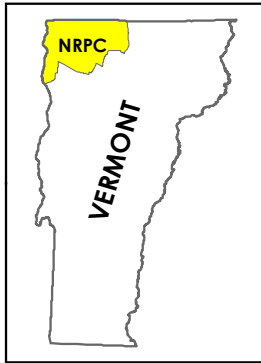


Existing Generation Facilities

Fairfield, Vermont
Act 174

The Energy Development Improvement Act of 2016

This map and the corresponding data is intended to be used to inform energy planning efforts by municipalities and regions. This may also be used for conceptual planning or initial site identification by those interested in developing renewable energy infrastructure. The maps do **NOT** take the place of site-specific investigation for a proposed facility and cannot be used as "siting maps."



Legend

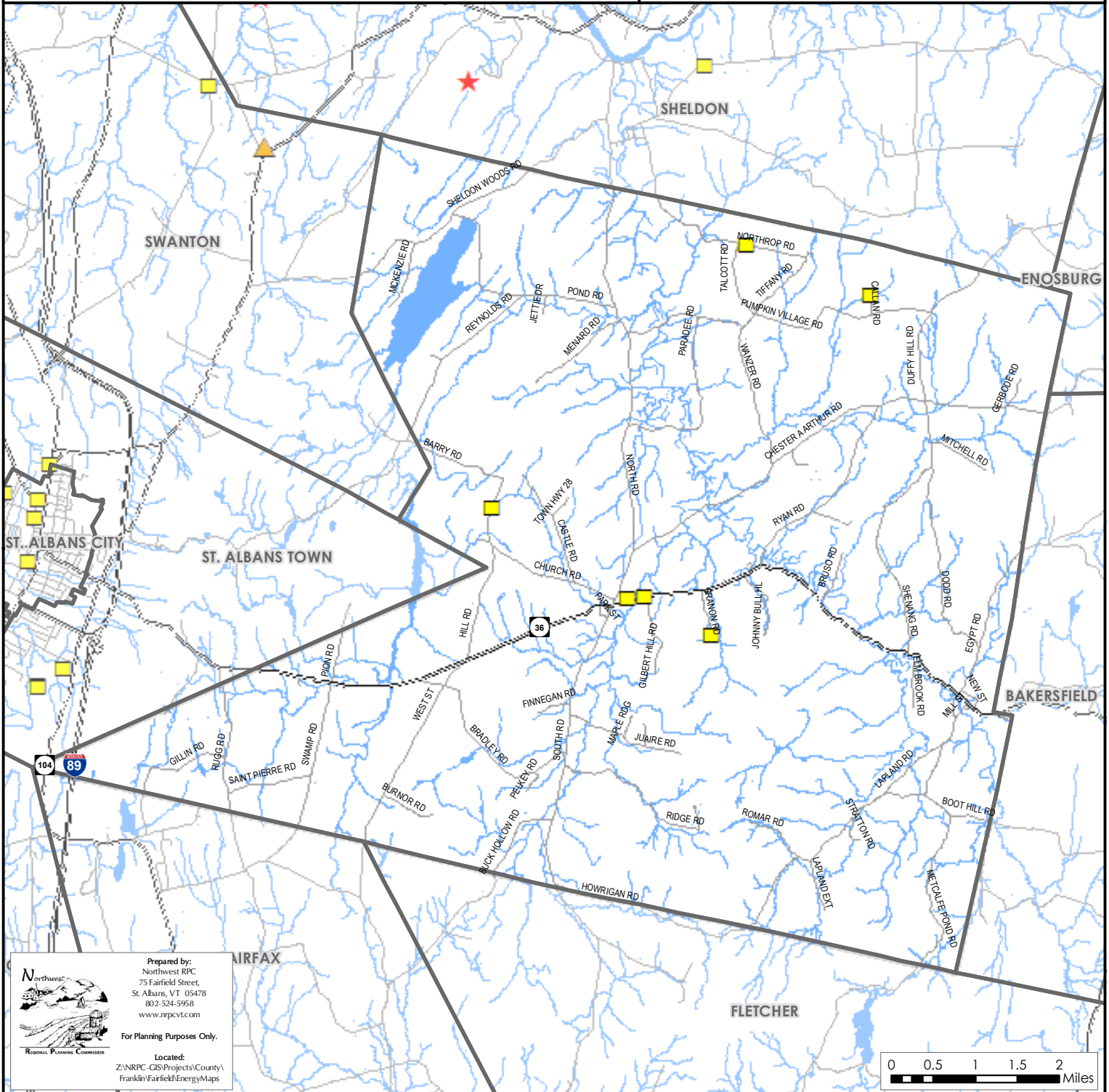
- ★ Biomass Facility
- Hydro Facility
- Solar Facility
- ▲ Wind Facility

Map C.3

Note: Only generators 15kW are shown on the map. A full list of all generators is available.

Sources: VCGI

Disclaimer: The accuracy of information presented is determined by its sources. Errors and omissions may exist. The Northwest RPC is not responsible for these. Questions of on-the-ground location can be resolved by site inspections and/or surveys by a registered surveyor. This map is not sufficient for delineation of features on-the-ground. This map identifies the presence of features, and may indicate relationships between features, but is not a replacement for surveyed information or engineering studies.



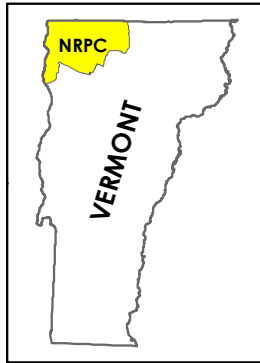

 Prepared by:
 Northwest RPC
 75 Fairfield Street,
 St. Albans, VT 05478
 802-524-5958
 www.nrpcvt.com
 For Planning Purposes Only.
 Located:
 Z:\NRPC_GIS\Projects\County\1
 Franklin\Fairfield\EnergyMaps

Solar

Fairfield, Vermont Act 174

The Energy Development Improvement Act of 2016

This map and the corresponding data is intended to be used to inform energy planning efforts by municipalities and regions. This may also be used for conceptual planning or initial site identification by those interested in developing renewable energy infrastructure. The maps do **NOT** take the place of site-specific investigation for a proposed facility and cannot be used as "siting maps."



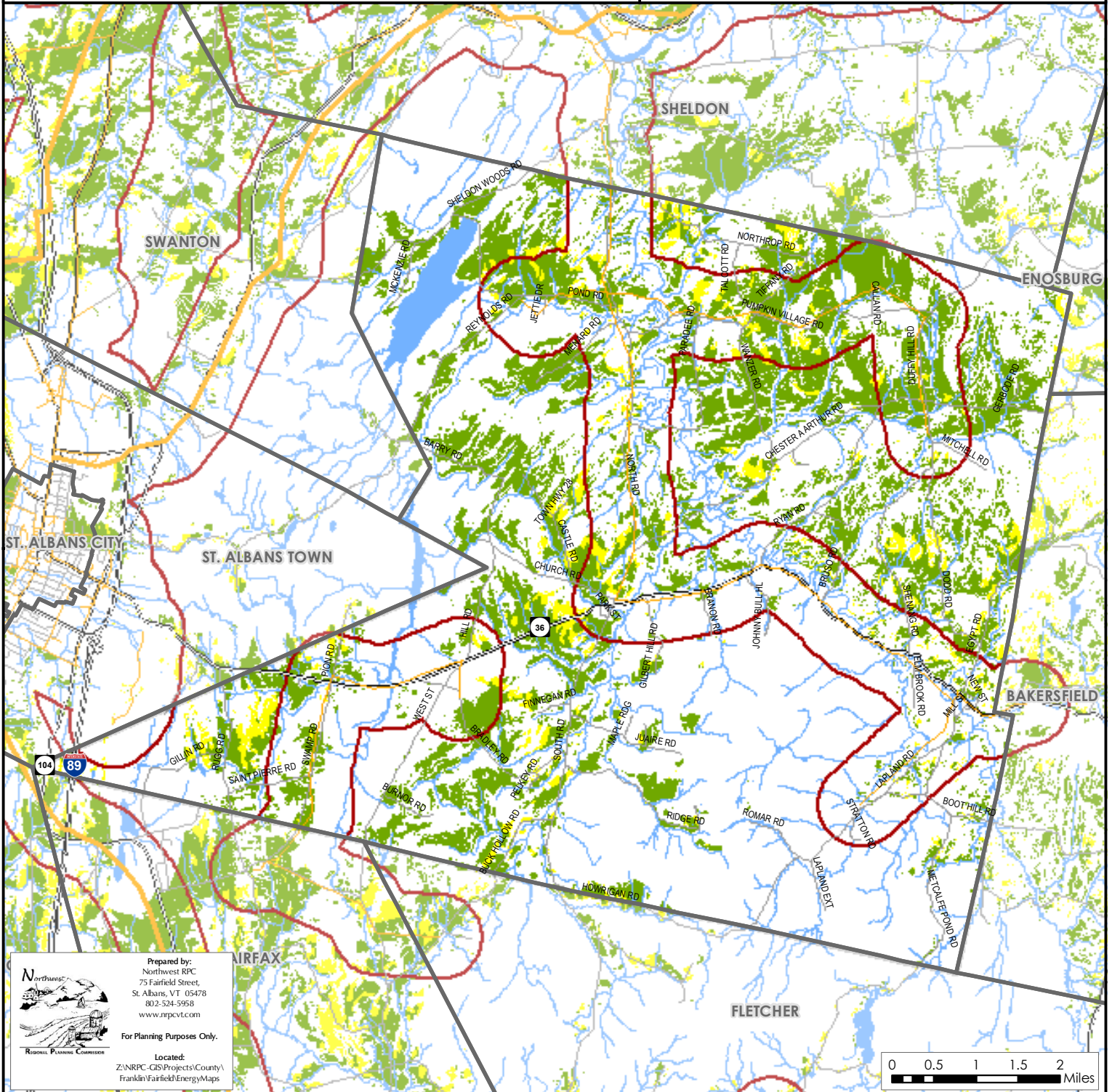
Legend

- Substation
- 3 Phase Power Line
- Transmission Line
- 1/2 Mile Buffer (3 Phase Power Line & Transmission Line)
- Prime Solar/No Known Constraints
- Base Solar/Possible Constraints

Map C.4

Sources: VCGI

Disclaimer: The accuracy of information presented is determined by its sources. Errors and omissions may exist. The Northwest RPC is not responsible for these. Questions of on-the-ground location can be resolved by site inspections and/or surveys by a registered surveyor. This map is not sufficient for delineation of features on-the-ground. This map identifies the presence of features, and may indicate relationships between features, but is not a replacement for surveyed information or engineering studies.




Regional Planning Commission

Prepared by:
Northwest RPC
75 Fairfield Street,
St. Albans, VT 05478
802-524-5958
www.nrpcvt.com

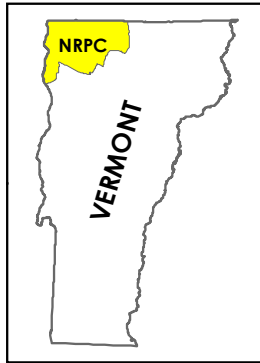
For Planning Purposes Only.

Located:
Z:\NRPC_GIS\Projects\County\
Franklin\Fairfield\EnergyMaps

Wind

Fairfield, Vermont Act 174 The Energy Development Improvement Act of 2016

This map and the corresponding data is intended to be used to inform energy planning efforts by municipalities and regions. This may also be used for conceptual planning or initial site identification by those interested in developing renewable energy infrastructure. The maps do **NOT** take the place of site-specific investigation for a proposed facility and cannot be used of as "siting maps."



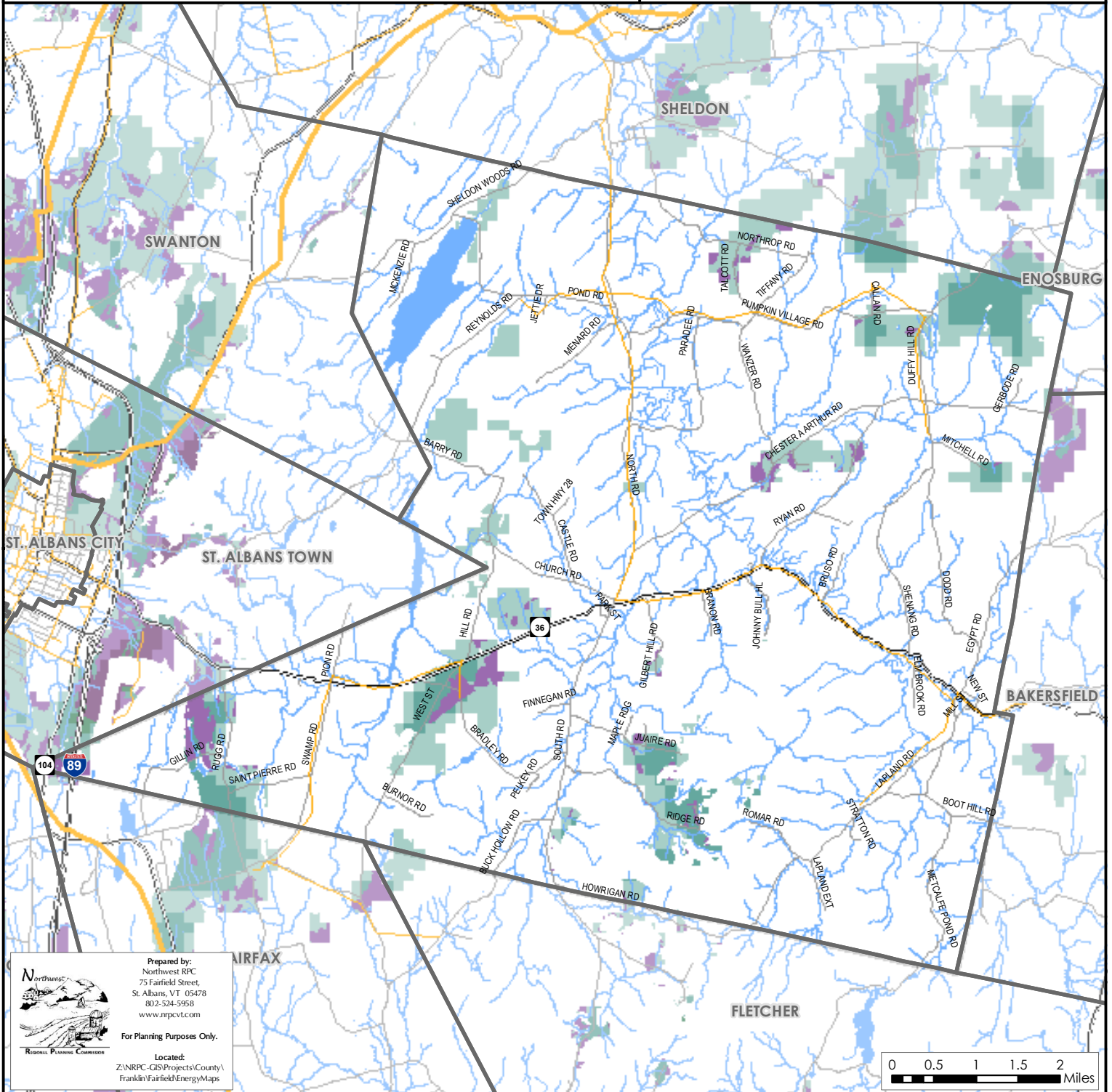
Legend

- Substation
- 3 Phase Power Line
- Transmission Line
- Prime Wind**
Areas of high wind potential and no known constraints.
Darker areas have higher wind speeds.
- Base Wind**
Areas of high wind potential and a presence of possible constraints.
Darker areas have higher wind speeds.

Map C.5

Sources: VCGI

Disclaimer: The accuracy of information presented is determined by its sources. Errors and omissions may exist. The Northwest RPC is not responsible for these. Questions of on-the-ground location can be resolved by site inspections and/or surveys by a registered surveyor. This map is not sufficient for delineation of features on-the-ground. This map identifies the presence of features, and may indicate relationships between features, but is not a replacement for surveyed information or engineering studies.



Prepared by:
Northwest RPC
75 Fairfield Street,
St. Albans, VT 05478
802-524-5958
www.nrpcvt.com

For Planning Purposes Only.

Located:
Z:\NRPC_GIS\Projects\County\
Franklin\Fairfield\EnergyMaps



Hydro

Fairfield, Vermont Act 174

The Energy Development Improvement Act of 2016

This map and the corresponding data is intended to be used to inform energy planning efforts by municipalities and regions. This may also be used for conceptual planning or initial site identification by those interested in developing renewable energy infrastructure. The maps do **NOT** take the place of site-specific investigation for a proposed facility and cannot be used as "siting maps."



Legend

- Substation
- 3 Phase Power Line
- Transmission Line
- Designated Outstanding Resource Water
- Known Constraint - Designated National Wild & Scenic River
- Possible Constraint - Stressed or Impaired Water
- Possible Constraint - RINAs

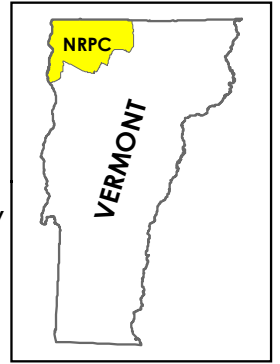
Potential Hydroelectric Facility

- < 50 kW Capacity
- > 50 kW Capacity
- High Hazard with < 50 kW Capacity
- High Hazard with > 50 kW Capacity

Operating Hydroelectric Facility

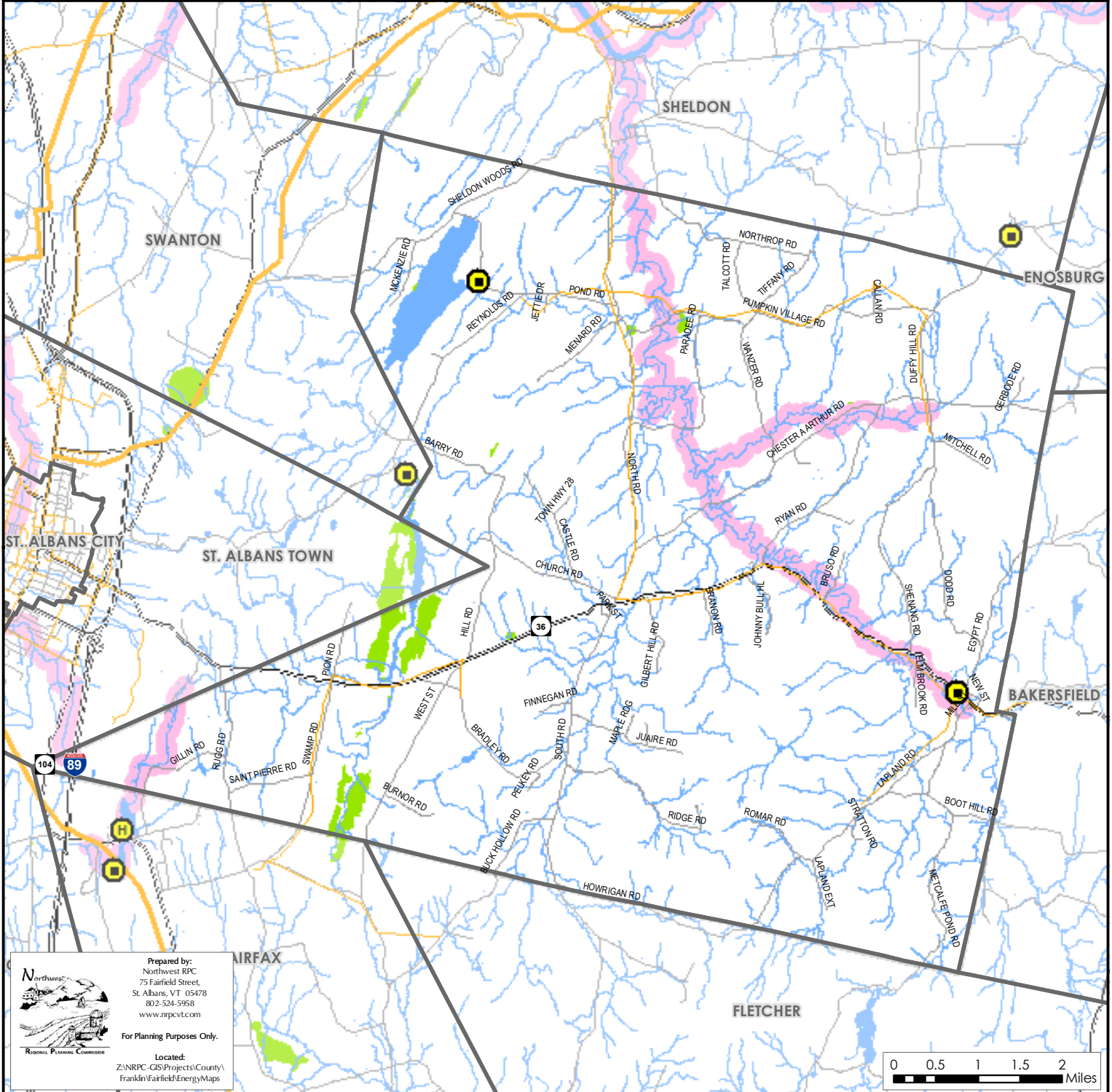
- Dam not on National Wild and Scenic River
- Dam on National Wild and Scenic River

Map C.6



Sources: VCGI

Disclaimer: The accuracy of information presented is determined by its sources. Errors and omissions may exist. The Northwest RPC is not responsible for these. Questions of on-the-ground location can be resolved by site inspections and/or surveys by a registered surveyor. This map is not sufficient for delineation of features on-the-ground. This map identifies the presence of features, and may indicate relationships between features, but is not a replacement for surveyed information or engineering studies.



Prepared by:
Northwest RPC
75 Fairfield Street,
St. Albans, VT 05478
802-524-5958
www.nrpcvt.com

For Planning Purposes Only.

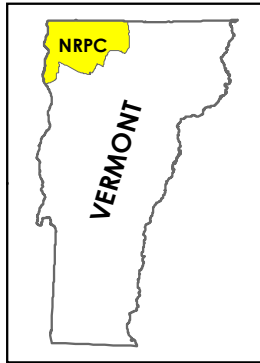
Located:
Z:\NRPC_GIS\Projects\County\
Franklin\Fairfield\EnergyMaps

Woody Biomass

Fairfield, Vermont
Act 174

The Energy Development Improvement Act of 2016

This map and the corresponding data is intended to be used to inform energy planning efforts by municipalities and regions. This may also be used for conceptual planning or initial site identification by those interested in developing renewable energy infrastructure. The maps do **NOT** take the place of site-specific investigation for a proposed facility and cannot be used as "siting maps."



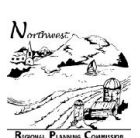
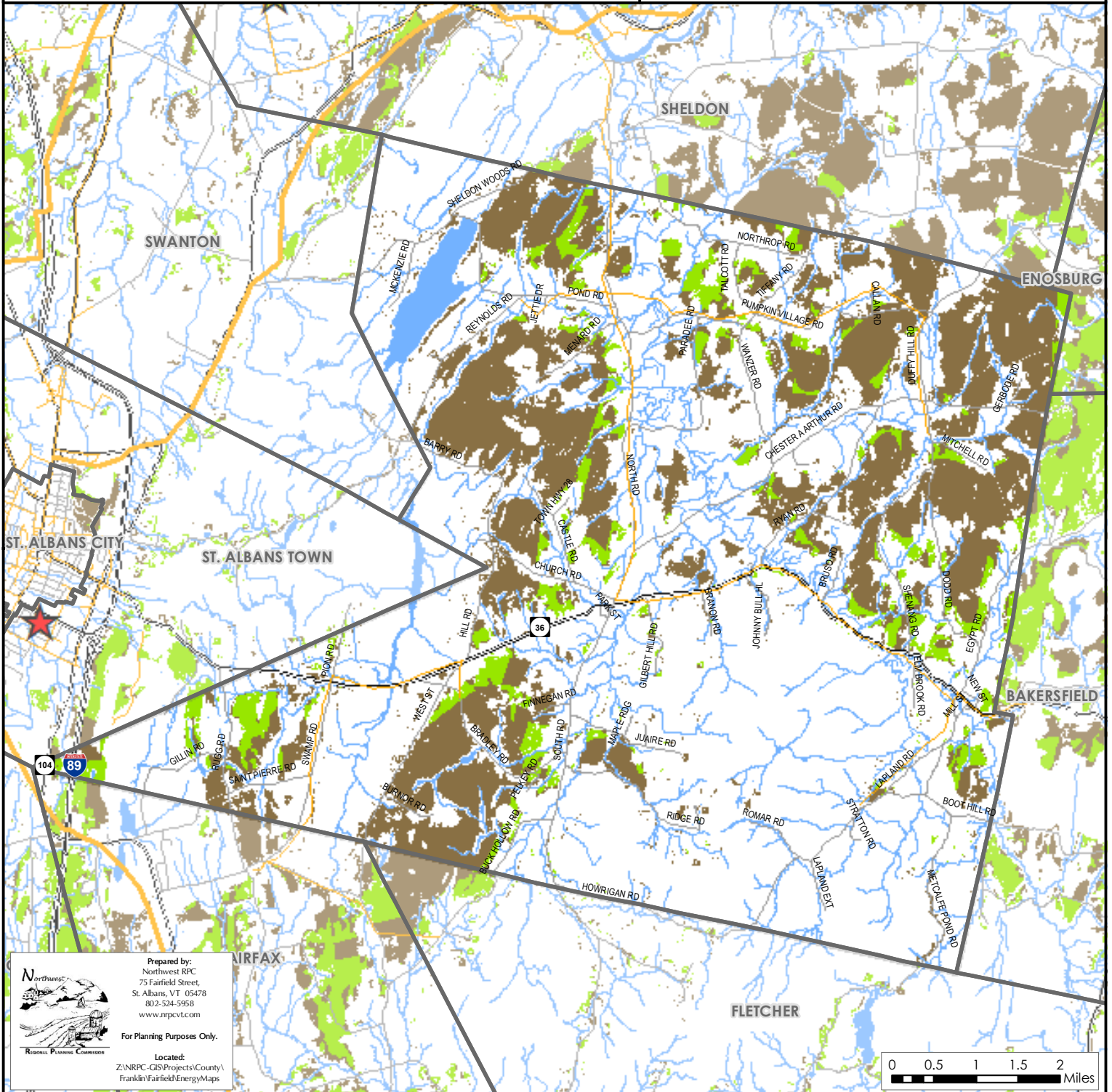
Legend

- Biomass System
- Cow Power
- Substation
- 3 Phase Power Line
- Transmission Line
- Prime Woody Biomass/No Known Constraints
- Base Woody Biomass/Possible Constraints

Map C.7

Sources: VCGI

Disclaimer: The accuracy of information presented is determined by its sources. Errors and omissions may exist. The Northwest RPC is not responsible for these. Questions of on-the-ground location can be resolved by site inspections and/or surveys by a registered surveyor. This map is not sufficient for delineation of features on-the-ground. This map identifies the presence of features, and may indicate relationships between features, but is not a replacement for surveyed information or engineering studies.



Prepared by:
Northwest RPC
75 Fairfield Street,
St. Albans, VT 05478
802-524-5958
www.nrpcvt.com

For Planning Purposes Only.

Located:
Z:\NRPC_GIS\Projects\County\
Franklin\Fairfield\EnergyMaps

