

FAIRFIELD

BAKERSFIELD

WATERVILLE

FAIRFAX

West Fletcher

Fletcher

Binghamville

CAMBRIDGE

WESTFORD

# Agricultural Land Use Town of Fletcher

Hay/Pasture

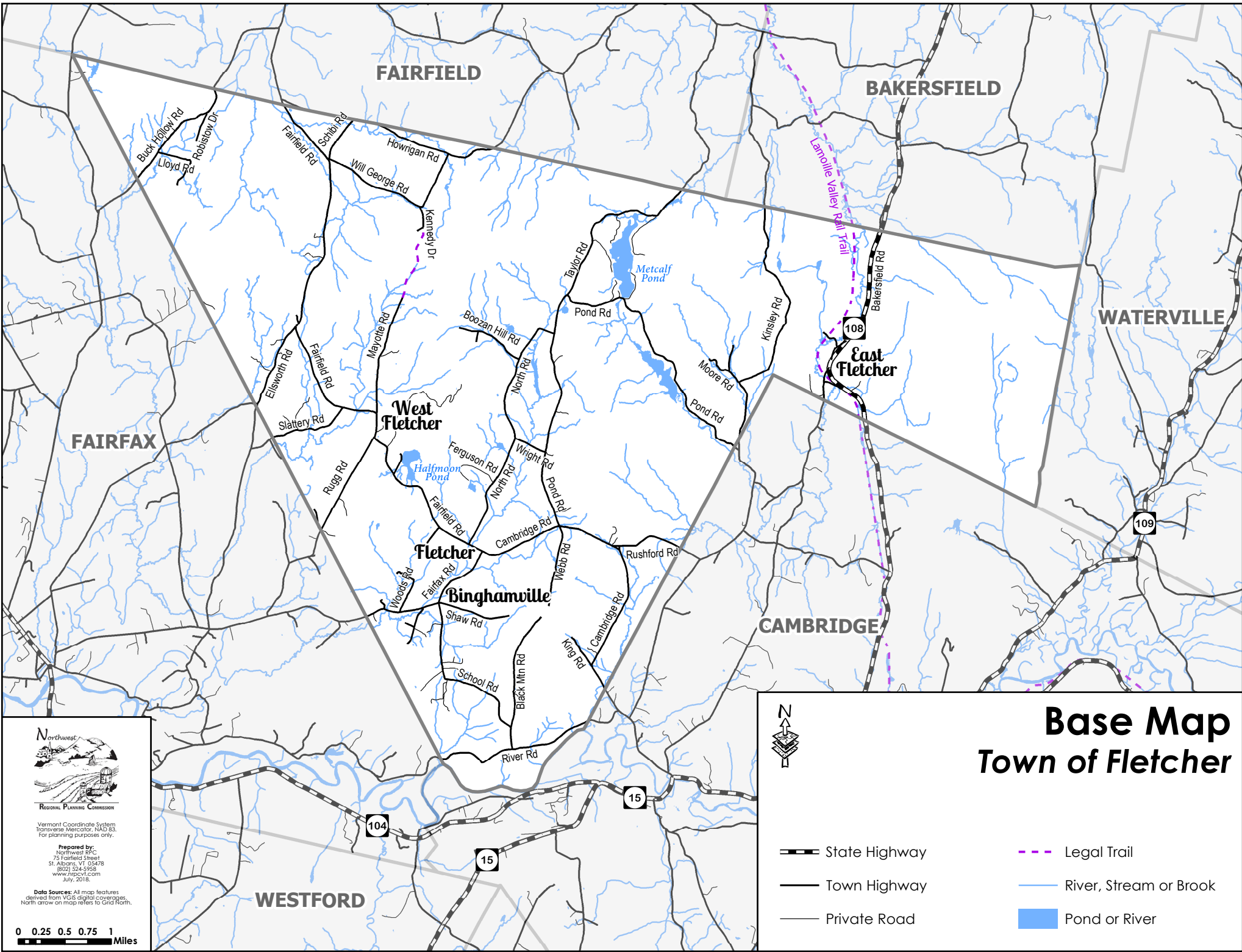
Cultivated Crops



Regional Planning Commission  
Vermont Coordinate System  
Transverse Mercator, NAD 83.  
For planning purposes only.  
Prepared by:  
Northwest RPC  
75 Fairfield Street  
St. Albans, VT 05478  
(802) 524-9958  
www.nrpcvt.com  
July, 2018.

Data Sources: All map features  
derived from VGIS digital coverages.  
North arrow on map refers to Grid North.

0 0.25 0.5 0.75 1  
Miles



FAIRFIELD

BAKERSFIELD

WATERVILLE

FAIRFAX

West Fletcher

East Fletcher

Fletcher

Binghamville

CAMBRIDGE

WESTFORD



Regional Planning Commission

Vermont Coordinate System  
Transverse Mercator, NAD 83.  
For planning purposes only.

Prepared by:  
Northwest RPC  
75 Fairfield Street  
St. Albans, VT 05478  
(802) 524-9598  
www.nrpcvt.com  
July, 2018.

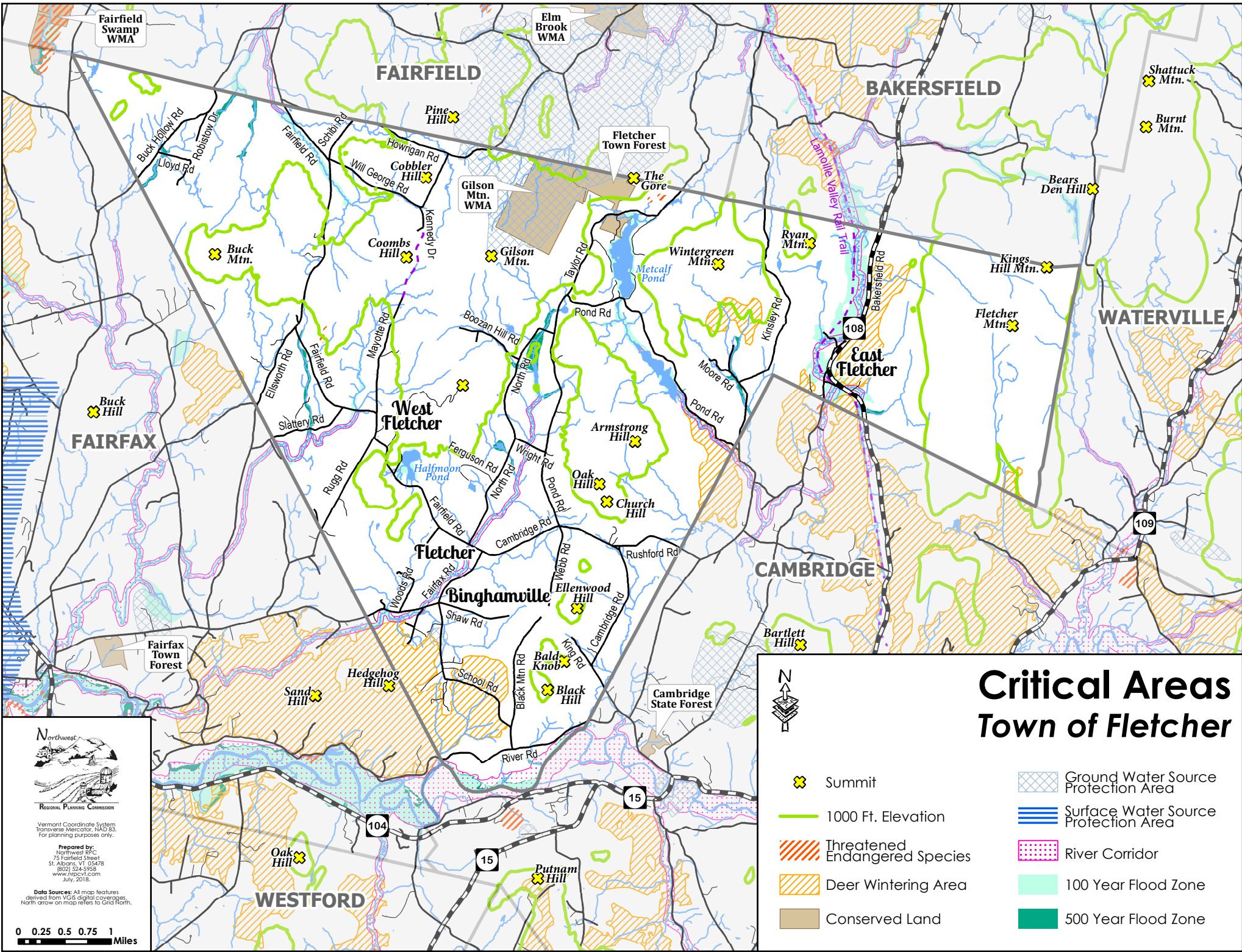
Data Sources: All map features  
derived from VGIS digital coverages.  
North arrow on map refers to Grid North.

0 0.25 0.5 0.75 1 Miles



# Base Map Town of Fletcher

-  State Highway
-  Town Highway
-  Private Road
-  Legal Trail
-  River, Stream or Brook
-  Pond or River



# Critical Areas Town of Fletcher



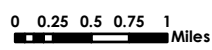
- Summit
- 1000 Ft. Elevation
- Threatened Endangered Species
- Deer Wintering Area
- Conserved Land
- Ground Water Source Protection Area
- Surface Water Source Protection Area
- River Corridor
- 100 Year Flood Zone
- 500 Year Flood Zone

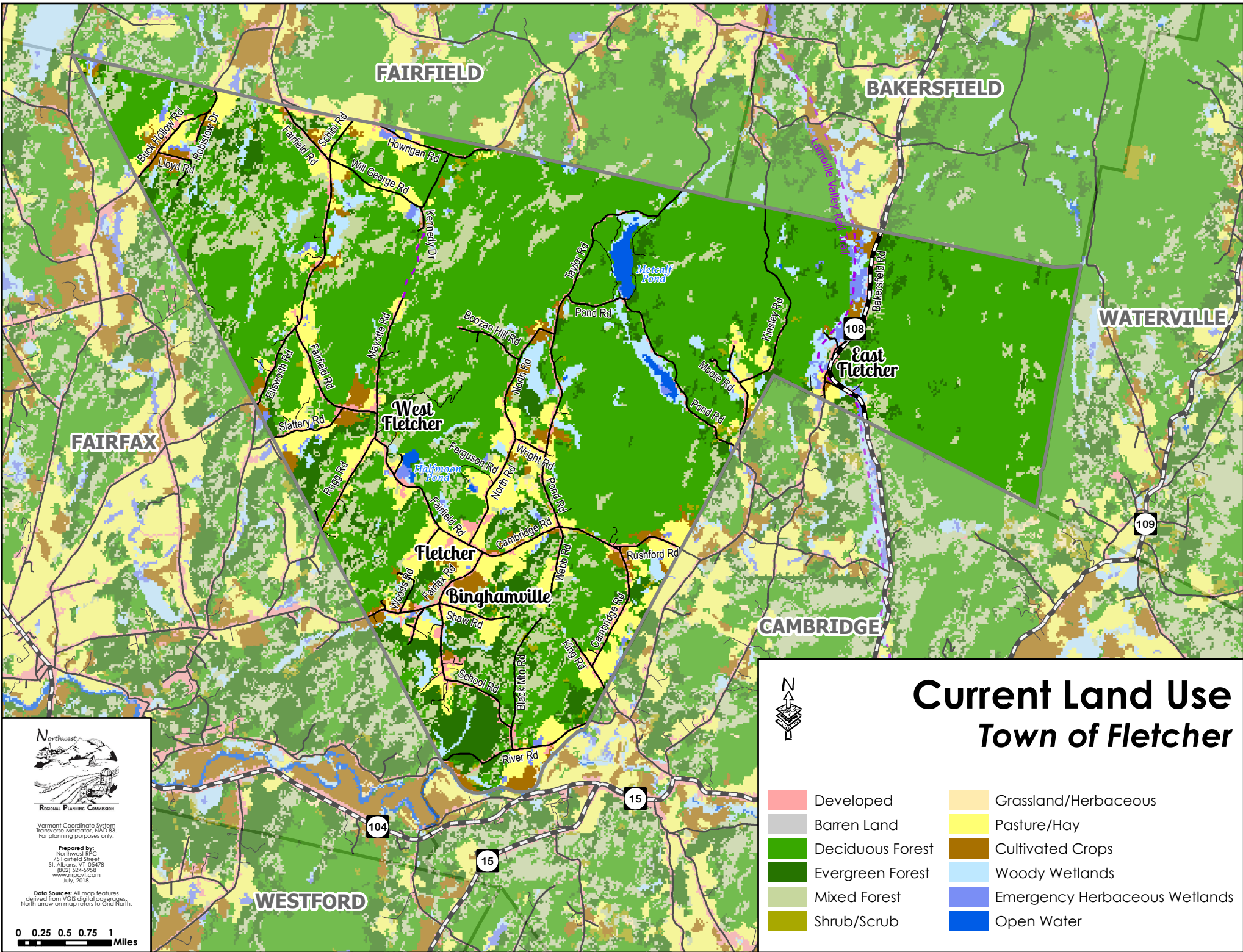


Regional Planning Commission  
Vermont Coordinate System  
Transverse Mercator, NAD 83.  
For planning purposes only.

Prepared by:  
Northwest RPC  
75 Fairfield Street  
St. Albans, VT 05478  
(802) 524-9958  
www.nrpcvt.com  
July, 2018.

Data Sources: All map features  
derived from VGIS digital coverages.  
North arrow on map refers to Grid North.





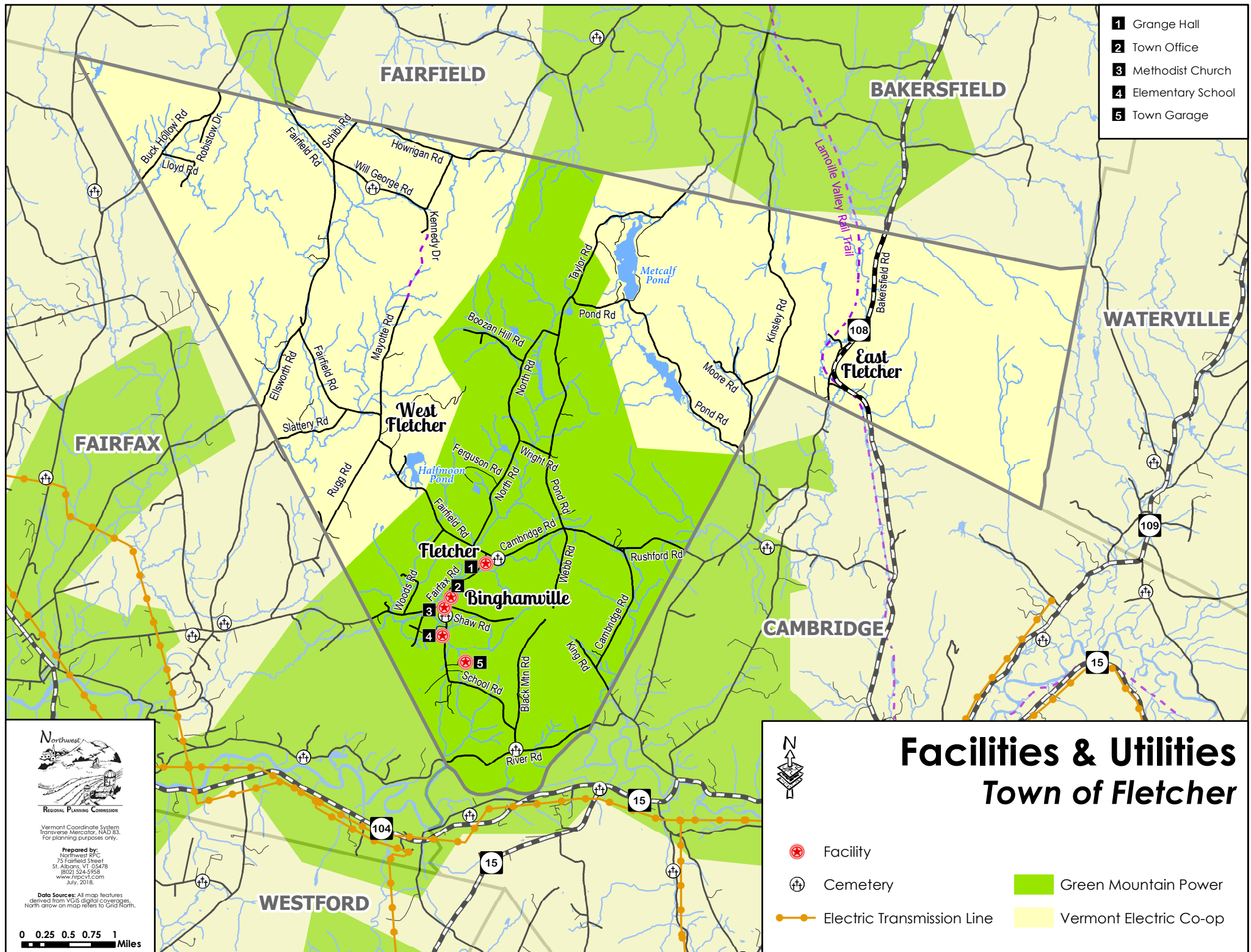
Vermont Coordinate System  
Transverse Mercator, NAD 83.  
For planning purposes only.

Prepared by:  
Northwest RFC  
75 Fairfield Street  
St. Albans, VT 05478  
(802) 524-9598  
www.nwrfc.com  
July, 2018.

Data Sources: All map features  
derived from GIS digital coverages.  
North arrow on map refers to Grid North.

0 0.25 0.5 0.75 1  
Miles

- 1** Grange Hall
- 2** Town Office
- 3** Methodist Church
- 4** Elementary School
- 5** Town Garage



# Facilities & Utilities Town of Fletcher



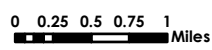
-  Facility
-  Cemetery
-  Electric Transmission Line
-  Green Mountain Power
-  Vermont Electric Co-op

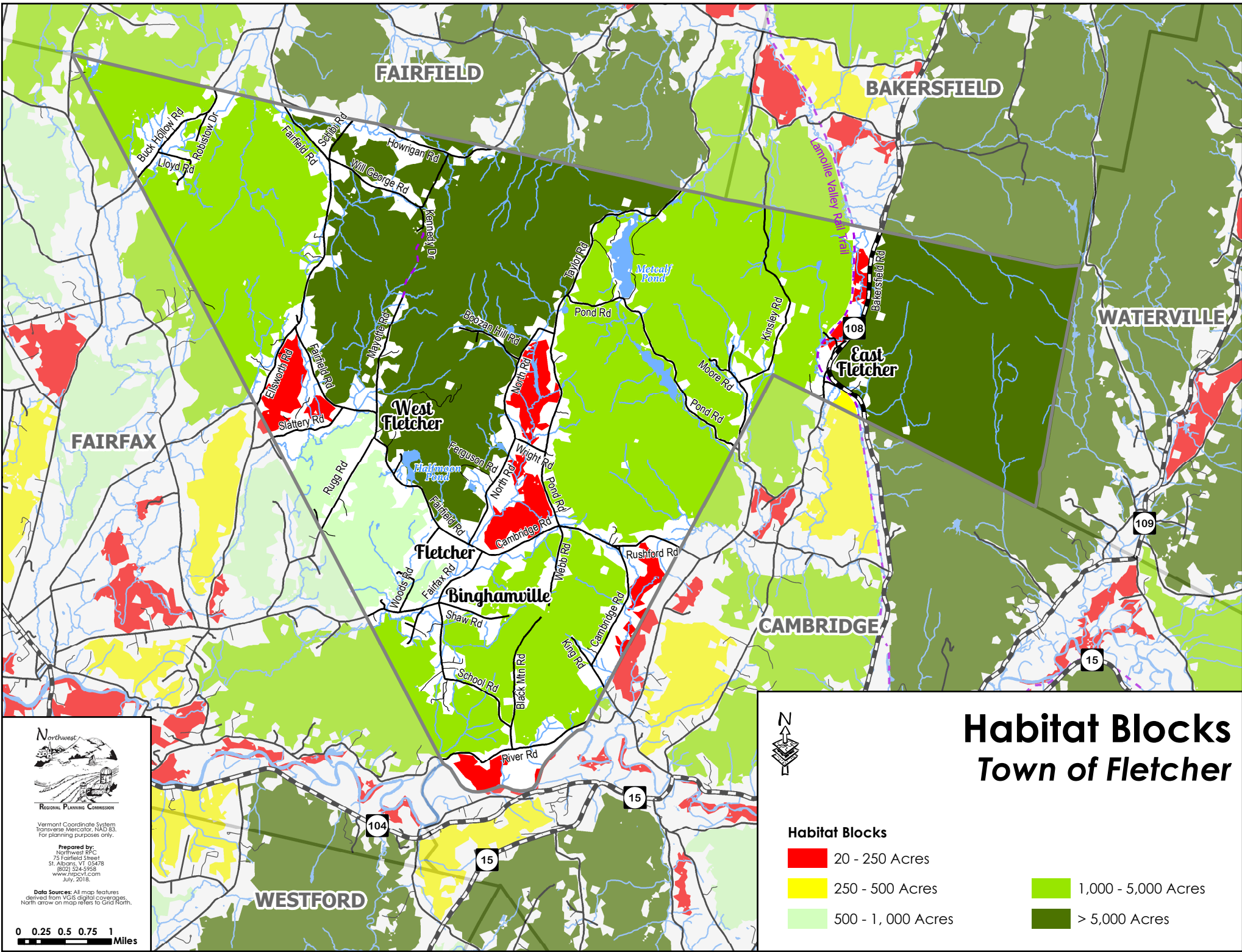


Regional Planning Commission  
 Vermont Coordinate System  
 Transverse Mercator, NAD 83.  
 For planning purposes only.

Prepared by:  
 Northwest RPC  
 75 Fairfield Street  
 St. Albans, VT 05478  
 (802) 524-9958  
 www.nrpcvt.com  
 July, 2018.

Data Sources: All map features  
 derived from VGIS digital coverages.  
 North arrow on map refers to Grid North.





FAIRFIELD

BAKERSFIELD

WATERVILLE

FAIRFAX

West Fletcher

East Fletcher

Fletcher

Binghamville

CAMBRIDGE

WESTFORD

# Habitat Blocks Town of Fletcher

**Habitat Blocks**

- 20 - 250 Acres
- 250 - 500 Acres
- 500 - 1,000 Acres
- 1,000 - 5,000 Acres
- > 5,000 Acres



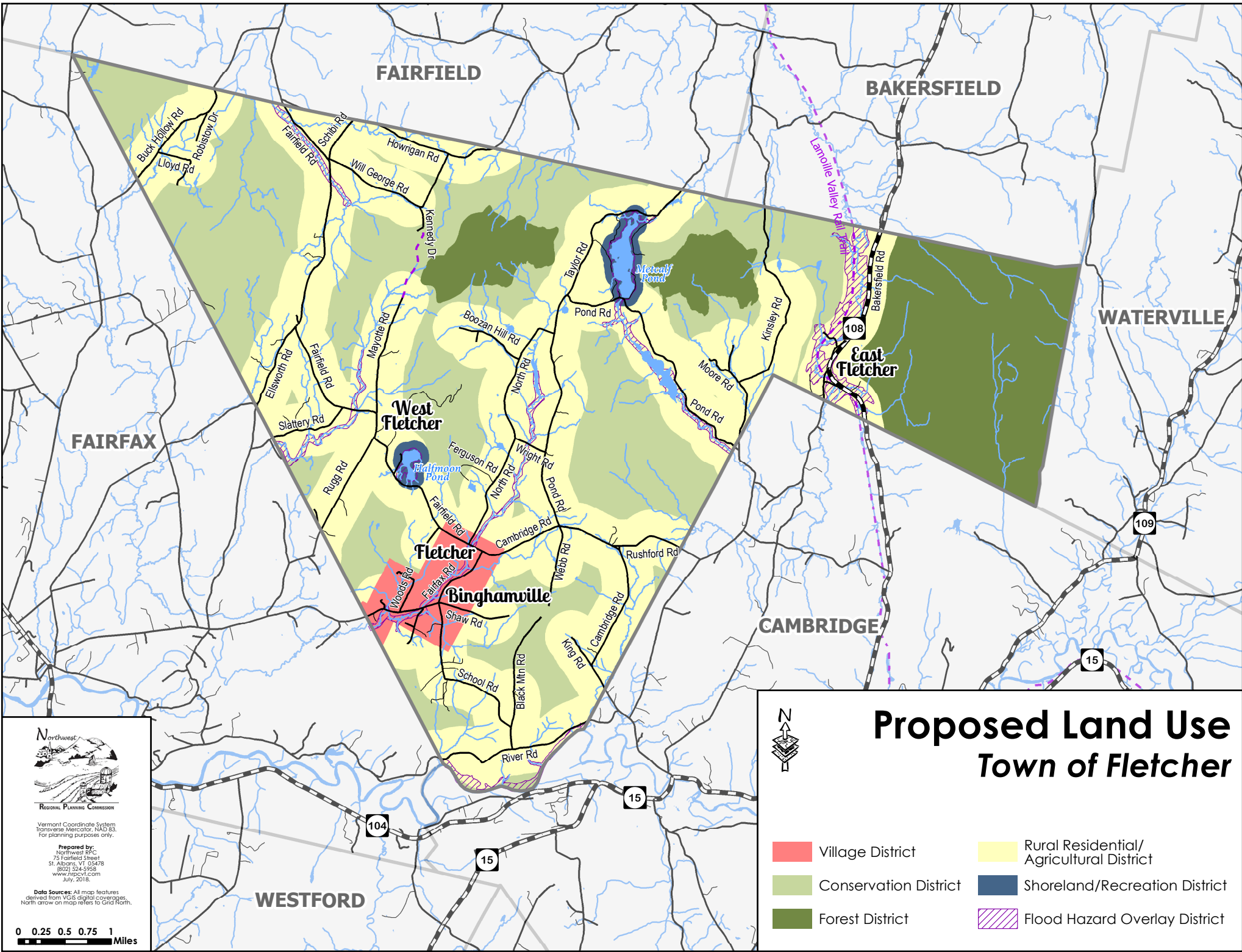
Regional Planning Commission

Vermont Coordinate System  
Transverse Mercator, NAD 83.  
For planning purposes only.

Prepared by:  
Northwest RPC  
75 Fairfield Street  
St. Albans, VT 05478  
(802) 524-9598  
www.nrpcvt.com  
July, 2018.

Data Sources: All map features  
derived from VGIS digital coverages.  
North arrow on map refers to Grid North.

0 0.25 0.5 0.75 1 Miles



# Proposed Land Use Town of Fletcher



- Village District
- Rural Residential/  
Agricultural District
- Conservation District
- Shoreland/Recreation District
- Forest District
- Flood Hazard Overlay District



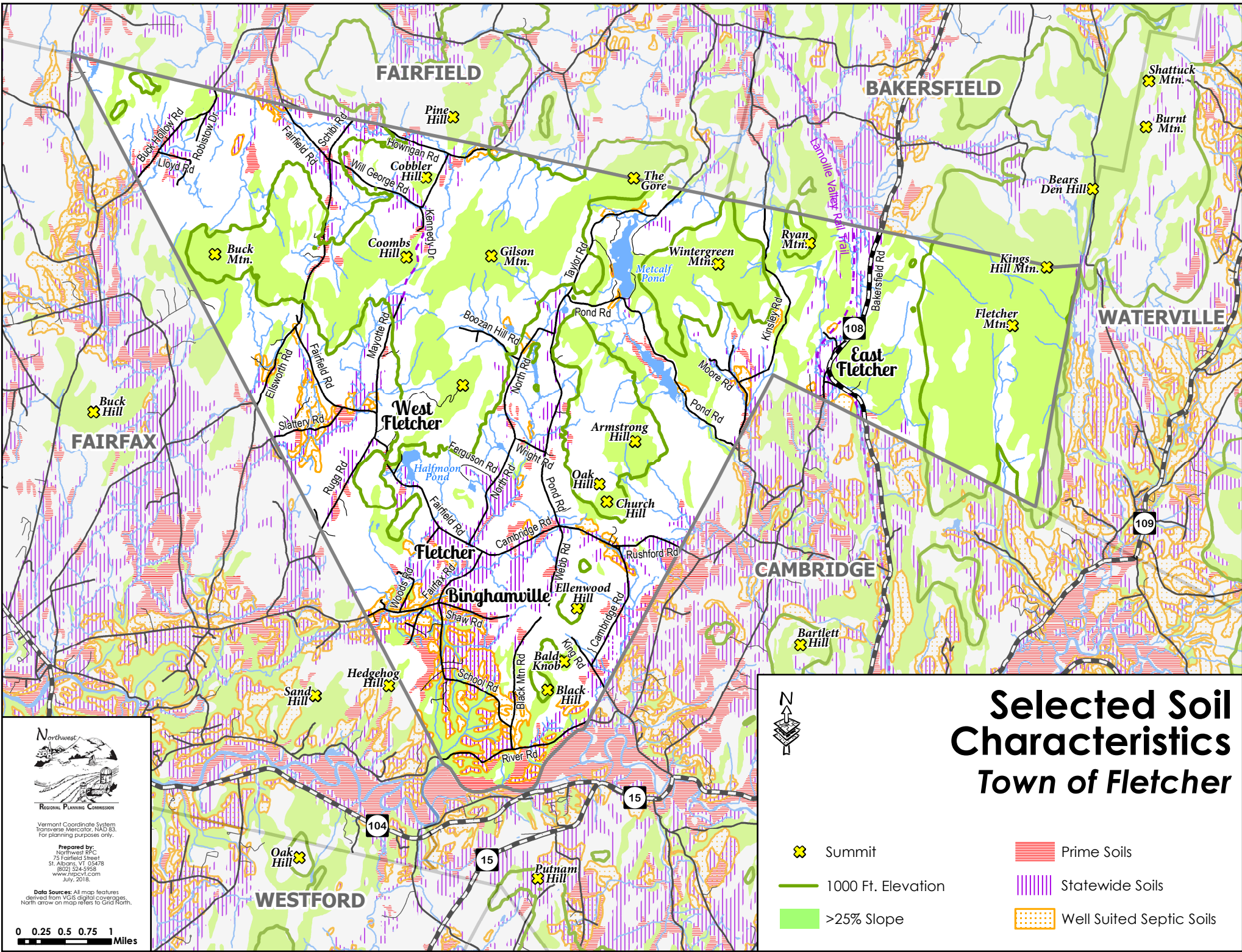
Regional Planning Commission

Vermont Coordinate System  
Transverse Mercator, NAD 83.  
For planning purposes only.

Prepared by:  
Northwest RPC  
75 Fairfield Street  
St. Albans, VT 05478  
(802) 524-9598  
www.nrpcvt.com  
July, 2018.



Data Sources: All map features  
derived from VGIS digital coverages.  
North arrow on map refers to Grid North.

0 0.25 0.5 0.75 1  
Miles



# Selected Soil Characteristics Town of Fletcher



-  Summit
-  Prime Soils
-  1000 Ft. Elevation
-  Statewide Soils
-  >25% Slope
-  Well Suited Septic Soils

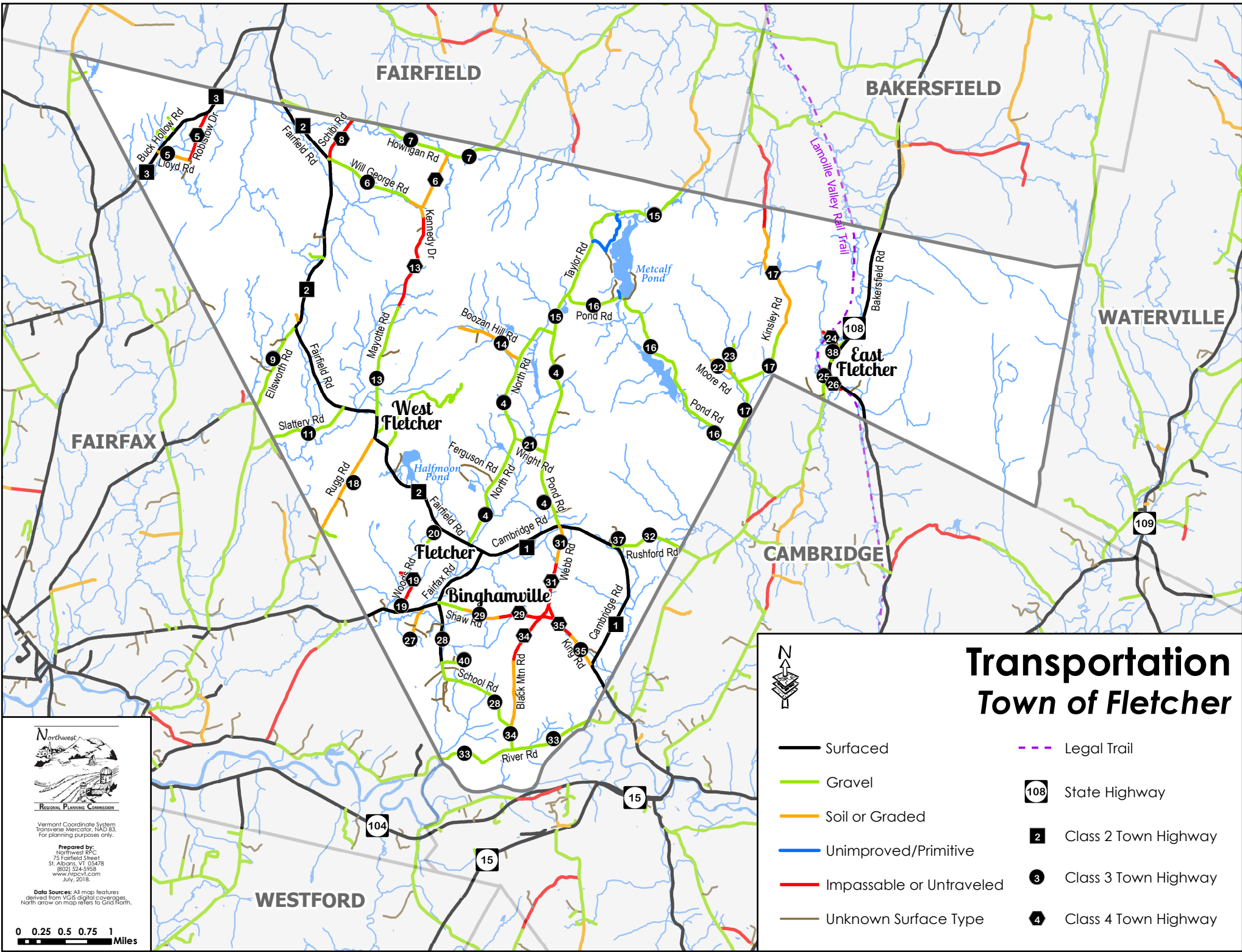


Regional Planning Commission  
 Vermont Coordinate System  
 Transverse Mercator, NAD 83.  
 For planning purposes only.

Prepared by:  
 Northwest RPC  
 75 Fairfield Street  
 St. Albans, VT 05478  
 (802) 524-9598  
 www.nrpcvt.com  
 July, 2018.

0 0.25 0.5 0.75 1 Miles





Regional Planning Commission

Vermont Coordinate System  
Transverse Mercator, NAD 83.  
For planning purposes only.

Prepared by:  
Northwest RPC  
75 Fairfield Street  
St. Albans, VT 05478  
(802) 524-9598  
www.nrpcvt.com  
July, 2018.

Data Sources: All map features  
derived from VGIS digital coverages.  
North arrow on map refers to Grid North.

