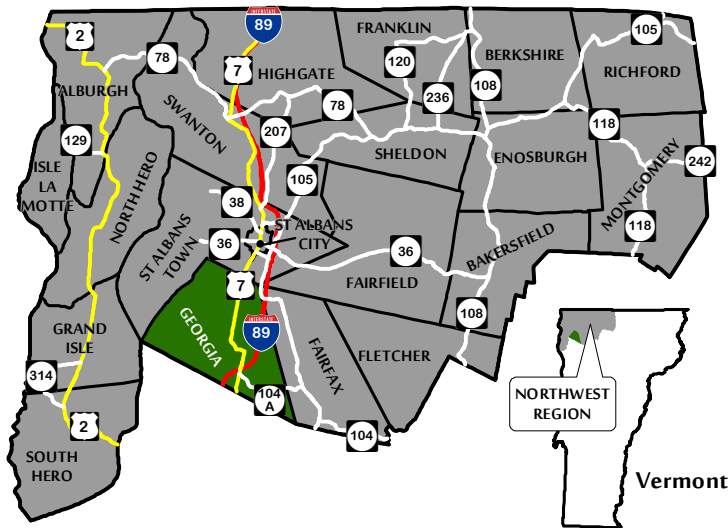


# NORTHWEST REGIONAL LOCATOR MAP

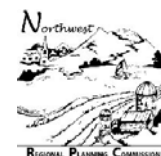
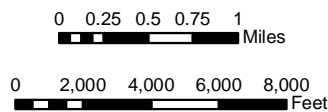
## Map 3.1





# TRANSPORTATION SYSTEM

## Map 3.2



Prepared by:  
Northwest Regional  
Planning Commission  
75 Fairfield Street  
St. Albans, VT 05478  
(802) 524-5958

### LEGEND

#### Road Surface Features

- Surfaced
- Gravel
- - - Soil or Graded
- ==== Unimproved/Primitive
- ..... Impassable or Untraveled
- Unknown Surface

#### Other Transportation Features

- ++++ New England Central Railroad
- ..... Trail
- Georgia Park & Ride
- CCTA - Bus Stop (Weekdays only)
- CCTA - St. Albans LINK Express (Weekdays only)
- GMTA - Bus Stop (Weekdays only)
- GMTA - Alburgh/Georgia Commuter (Weekdays only)

#### Road Class Features

- Interstate Highway
- Federal Highway
- State Highway
- Class 2 Town Highway
- Class 3 Town Highway
- Class 4 Town Highway

For planning purposes only.

Created: June, 2015.

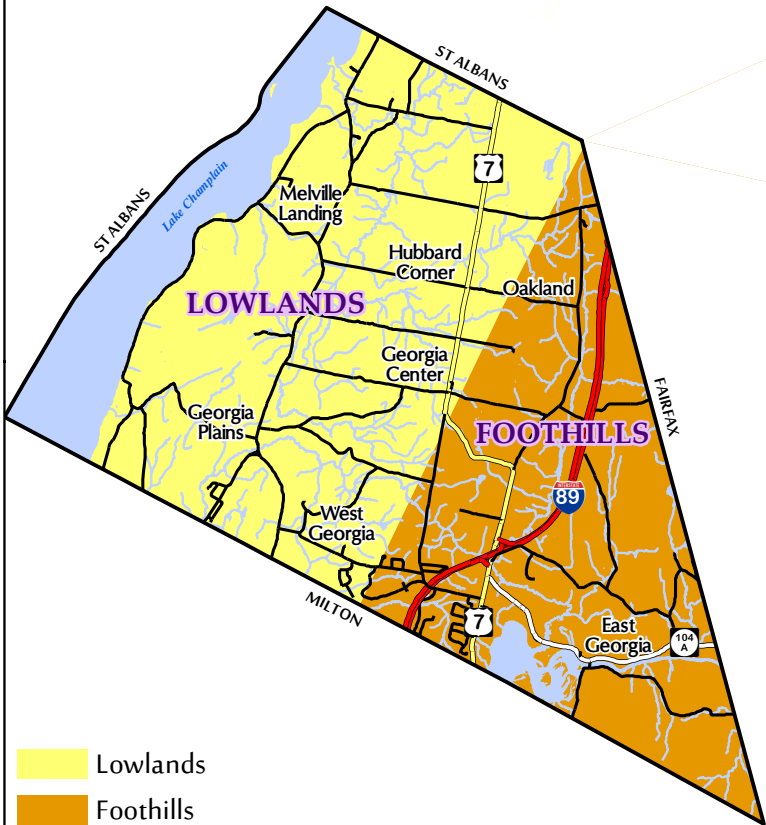
Located:  
zgis/projects/county/franklin/georgia/  
townplan2015/map3.2.mxd

#### Data Sources:

All map features derived from VGIS digital coverages.  
Vermont Coordinate System Transverse Mercator, NAD 83.  
North arrow on map refers to Grid North.

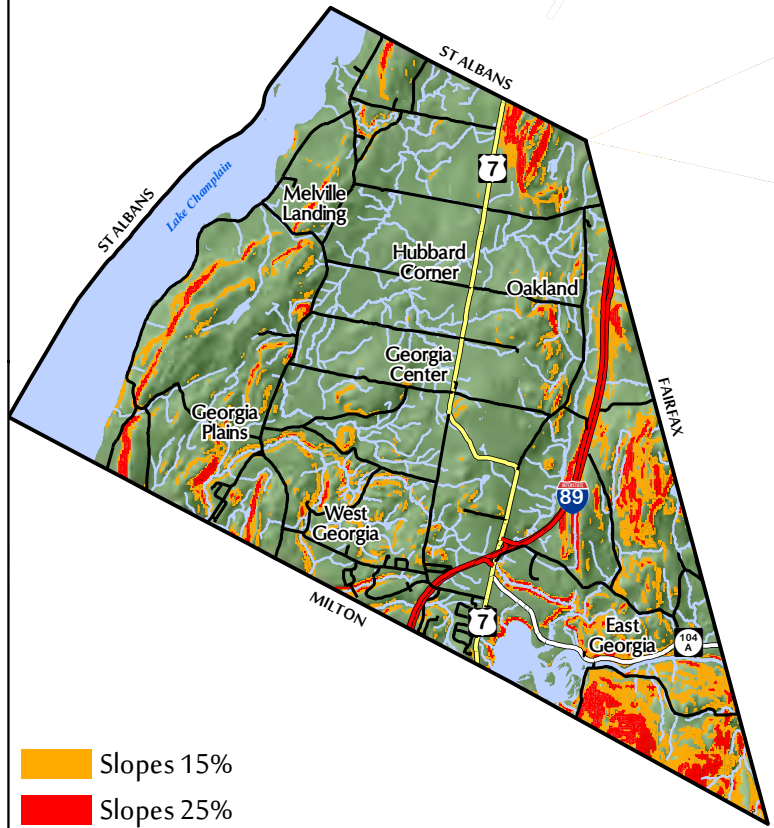
# PHYSIOGRAPH REGIONS

Map 4.1



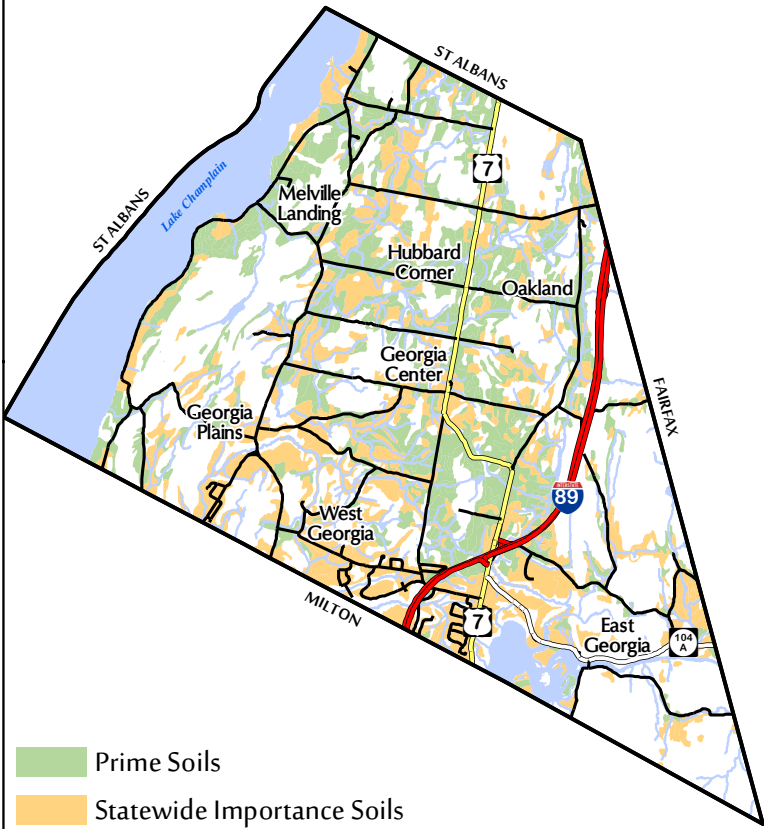
# STEEP SLOPES

## Map 4.2



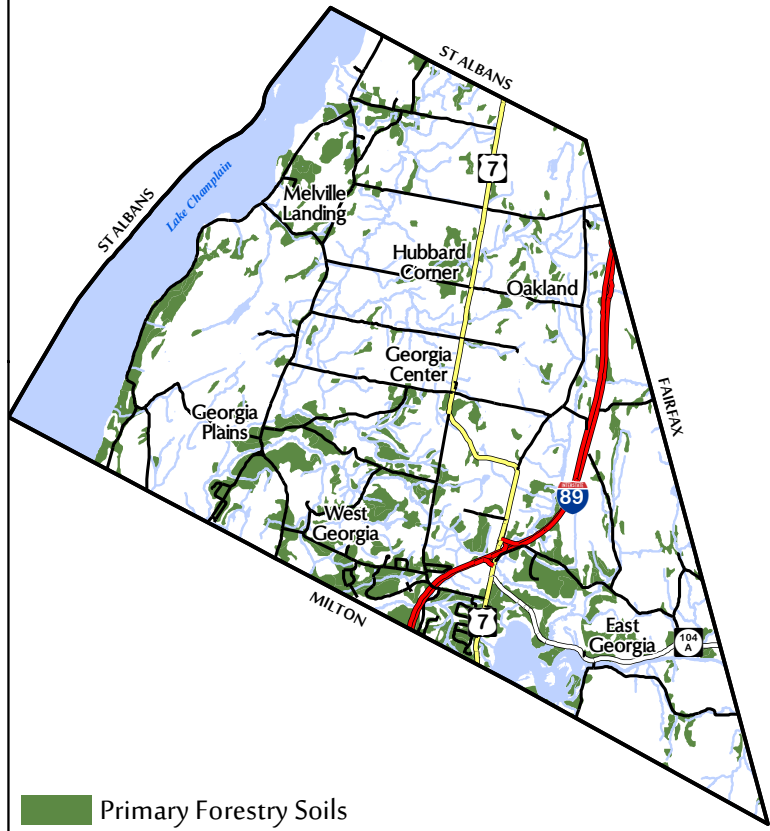
# PRIMARY AGRICULTURAL SOILS

## Map 4.3



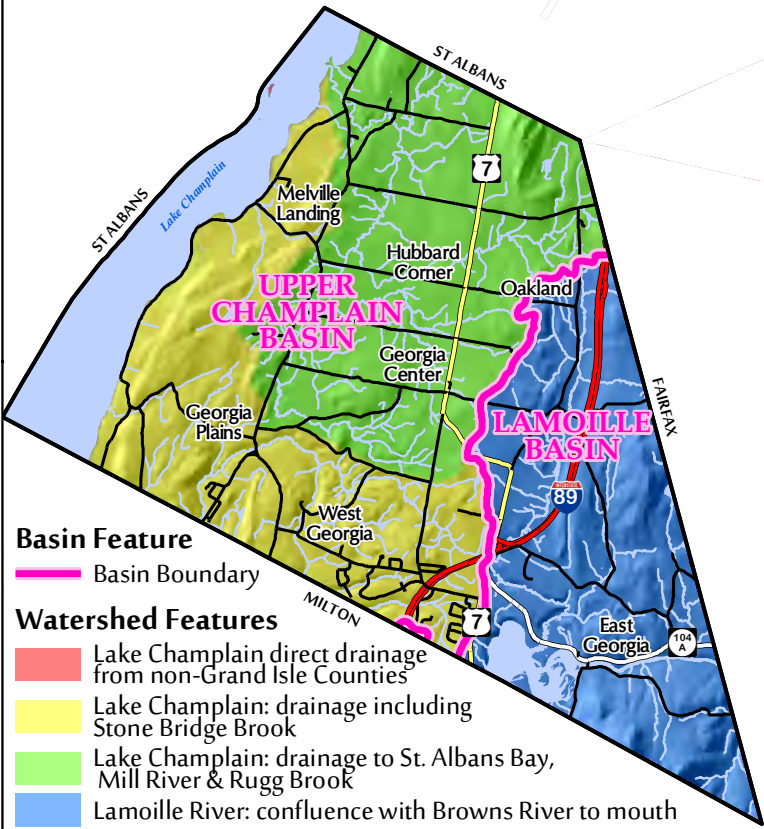
# PRIMARY FORESTRY SOILS

Map 4.4



# WATERSHED MAP

## Map 4.5







# WATER SUPPLY SOURCE PROTECTION AREAS, WETLAND & FLOOD ZONES

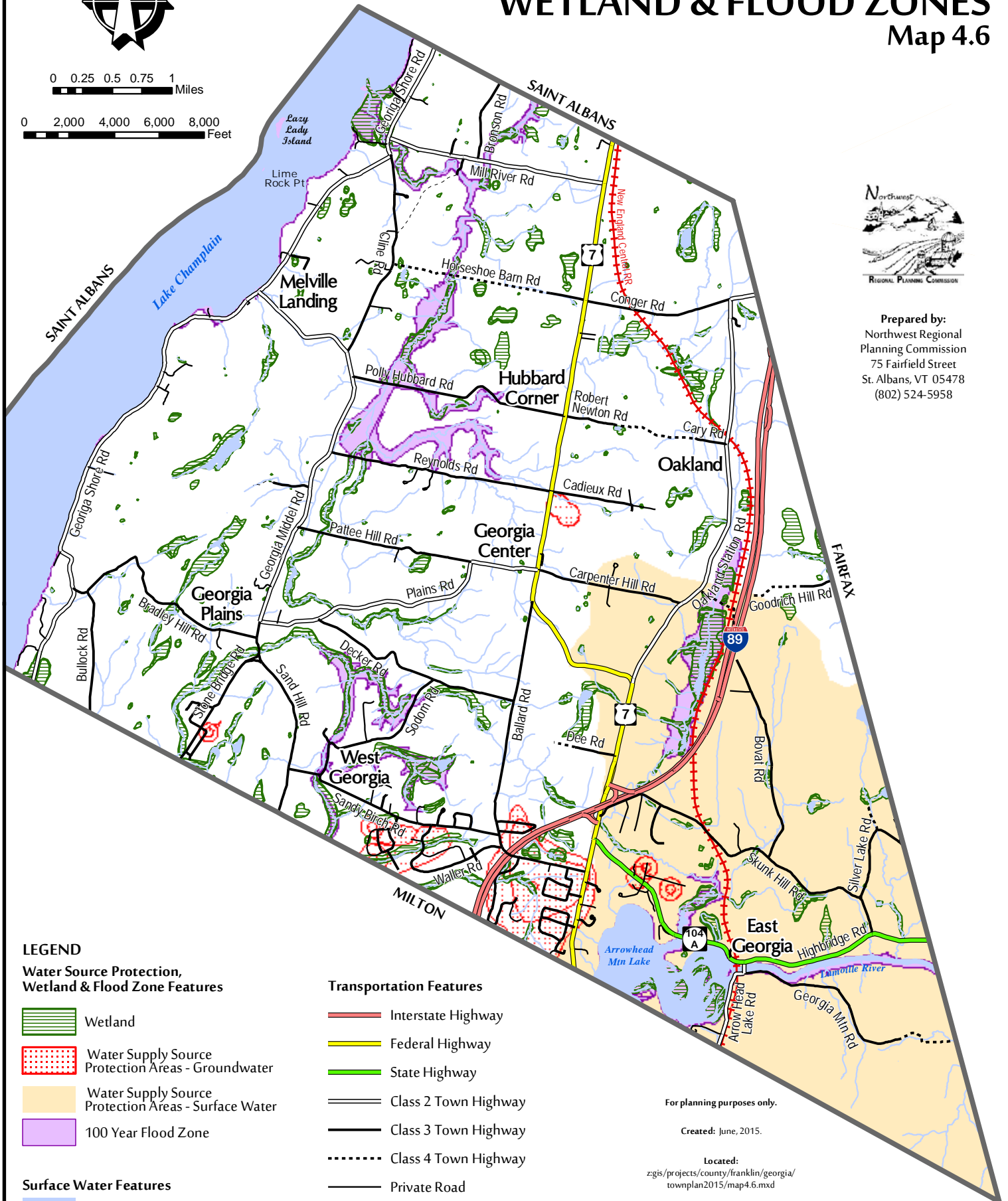
## Map 4.6

0 0.25 0.5 0.75 1 Miles

0 2,000 4,000 6,000 8,000 Feet



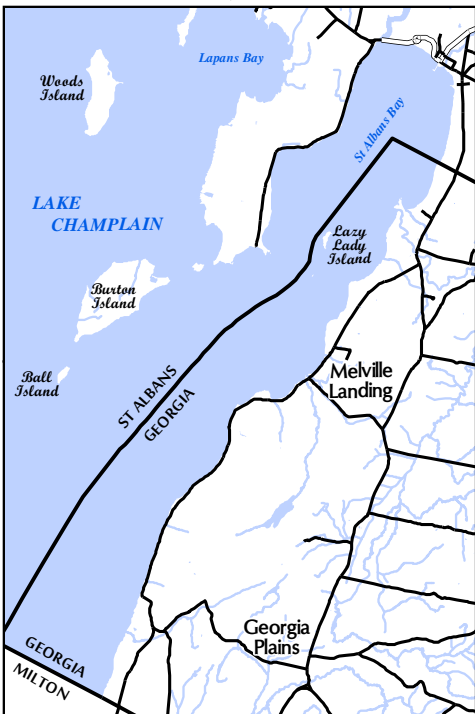
Prepared by:  
Northwest Regional  
Planning Commission  
75 Fairfield Street  
St. Albans, VT 05478  
(802) 524-5958





# GEORGIA ISLANDS

## Map 4.7





0 0.25 0.5 0.75 1 Miles

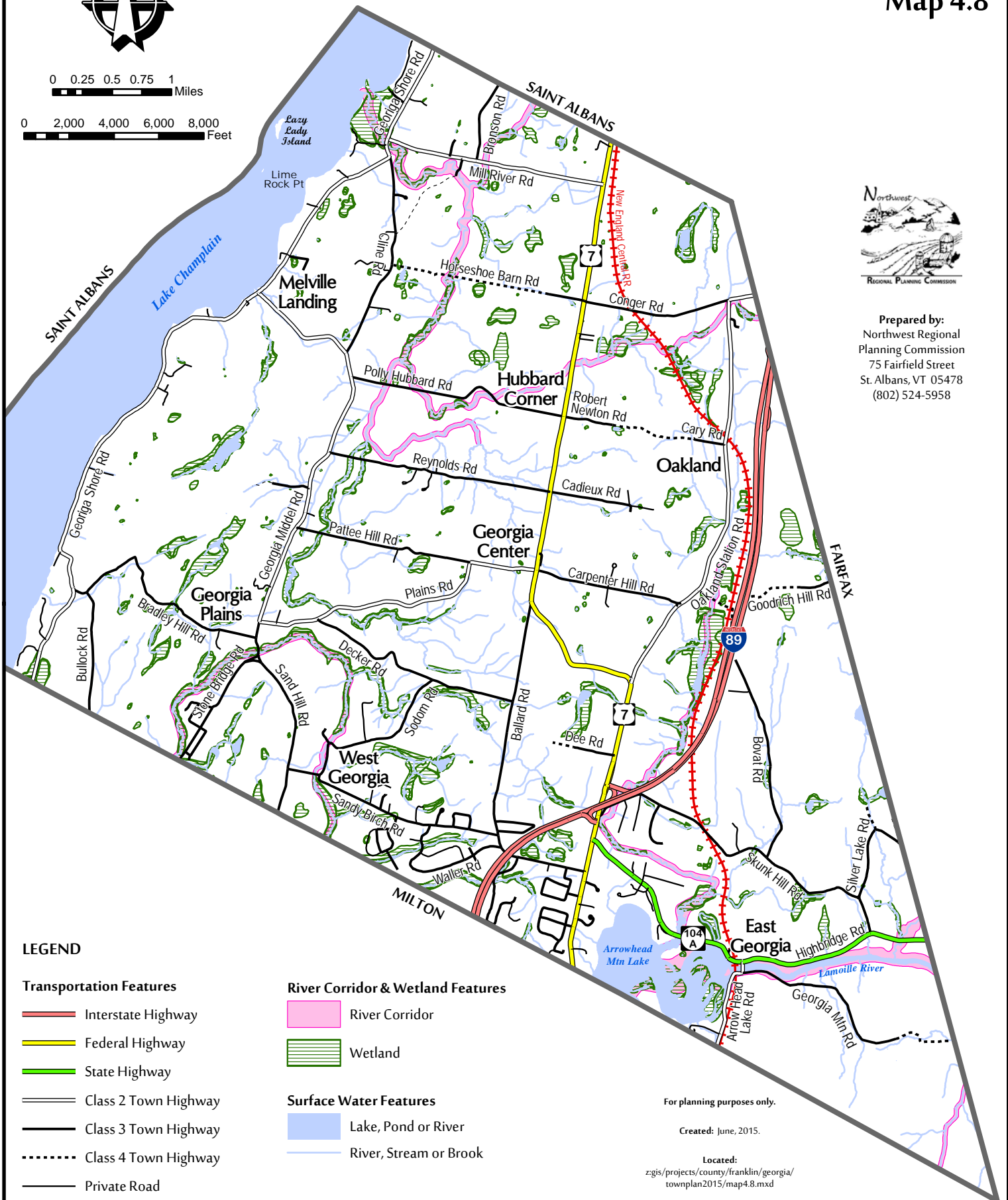
0 2,000 4,000 6,000 8,000 Feet

# RIVER CORRIDORS

## Map 4.8



Prepared by:  
Northwest Regional  
Planning Commission  
75 Fairfield Street  
St. Albans, VT 05478  
(802) 524-5958



### LEGEND

#### Transportation Features

- Interstate Highway
- Federal Highway
- State Highway
- Class 2 Town Highway
- Class 3 Town Highway
- Class 4 Town Highway
- Private Road
- Railroad
- Legal Trail

#### River Corridor & Wetland Features

- River Corridor
- Wetland

#### Surface Water Features

- Lake, Pond or River
- River, Stream or Brook

For planning purposes only.

Created: June, 2015.

#### Located:

zgis/projects/county/franklin/georgia/  
townplan2015/map4.8.mxd

#### Data Sources:

All map features derived from VGIS digital coverages.  
Vermont Coordinate System Transverse Mercator, NAD 83.  
North arrow on map refers to Grid North.

# WILDLIFE AREAS

## Map 4.9

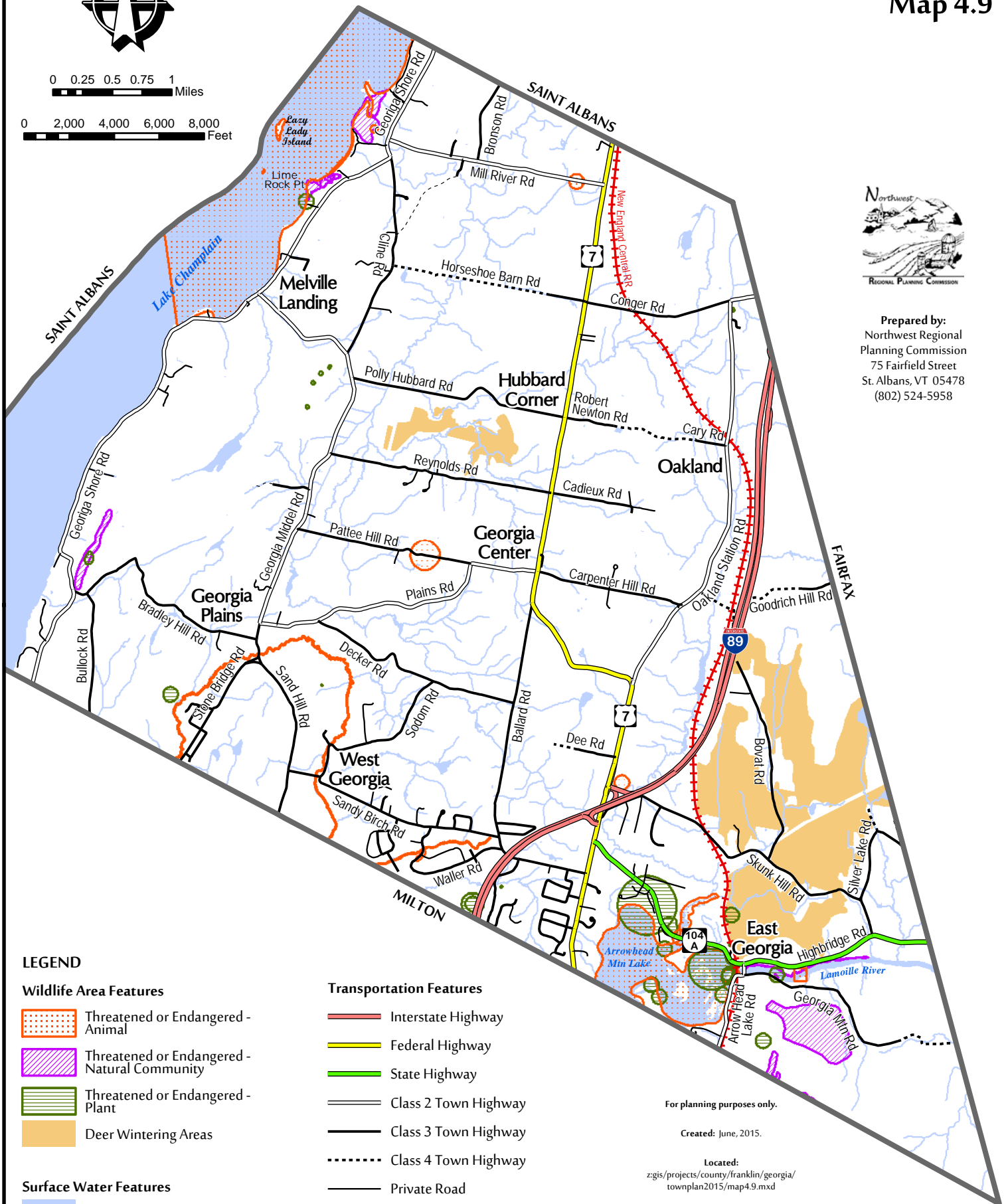


0 0.25 0.5 0.75 1 Miles

0 2,000 4,000 6,000 8,000 Feet



Prepared by:  
Northwest Regional  
Planning Commission  
75 Fairfield Street  
St. Albans, VT 05478  
(802) 524-5958



### LEGEND

#### Wildlife Area Features

- Threatened or Endangered - Animal
- Threatened or Endangered - Natural Community
- Threatened or Endangered - Plant
- Deer Wintering Areas

#### Surface Water Features

- Lake, Pond or River
- River, Stream or Brook

#### Transportation Features

- Interstate Highway
- Federal Highway
- State Highway
- Class 2 Town Highway
- Class 3 Town Highway
- Class 4 Town Highway
- Private Road
- Railroad
- Legal Trail

For planning purposes only.

Created: June, 2015.

#### Located:

zgis/projects/county/franklin/georgia/  
townplan2015/map4.9.mxd

#### Data Sources:

All map features derived from VGIS digital coverages.  
Vermont Coordinate System Transverse Mercator, NAD 83.  
North arrow on map refers to Grid North.



# UTILITIES, FACILITIES & TOWN SERVICES

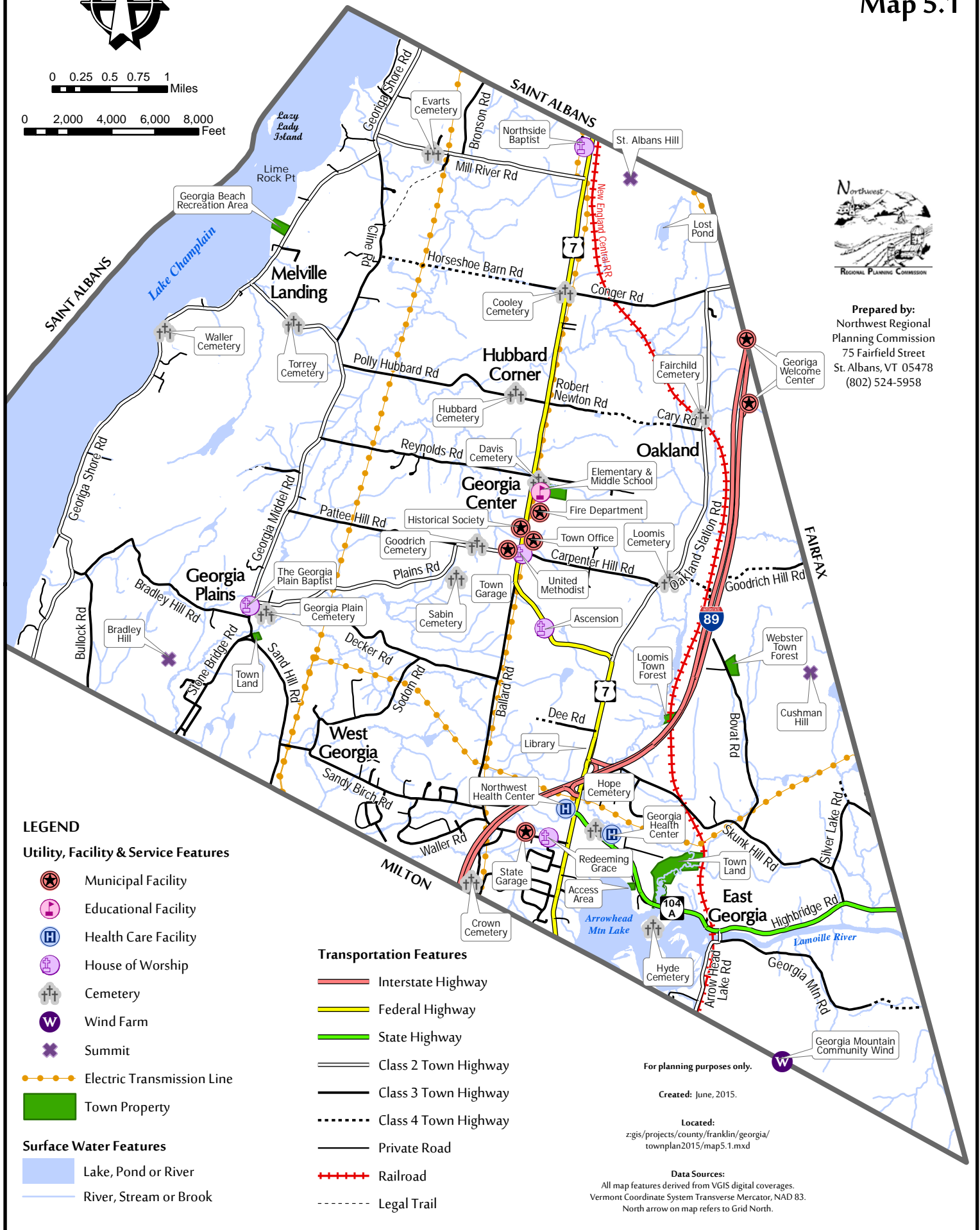
Map 5.1

0 0.25 0.5 0.75 1 Miles

0 2,000 4,000 6,000 8,000 Feet



Prepared by:  
Northwest Regional  
Planning Commission  
75 Fairfield Street  
St. Albans, VT 05478  
(802) 524-5958



## LEGEND

### Utility, Facility & Service Features

- Municipal Facility
- Educational Facility
- Health Care Facility
- House of Worship
- Cemetery
- Wind Farm
- Summit
- Electric Transmission Line
- Town Property

### Surface Water Features

- Lake, Pond or River
- River, Stream or Brook

### Transportation Features

- Interstate Highway
- Federal Highway
- State Highway
- Class 2 Town Highway
- Class 3 Town Highway
- Class 4 Town Highway
- Private Road
- Railroad
- Legal Trail

For planning purposes only.

Created: June, 2015.

### Located:

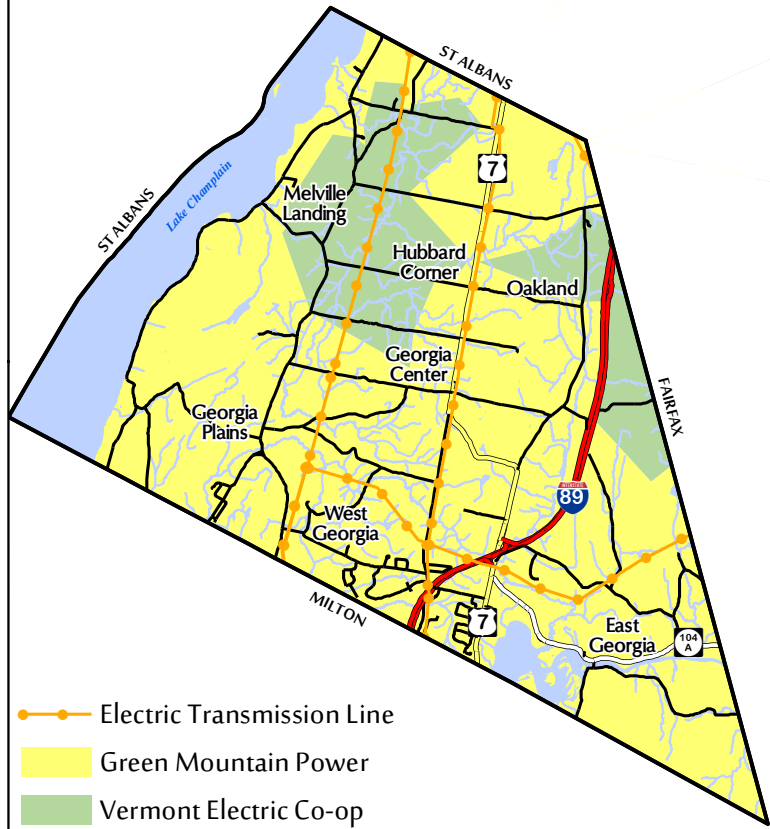
zgis/projects/county/franklin/georgia/  
townplan2015/map5.1.mxd

### Data Sources:

All map features derived from VGIS digital coverages.  
Vermont Coordinate System Transverse Mercator, NAD 83.  
North arrow on map refers to Grid North.

# ELECTRIC UTILITY AREAS

## Map 5.2







# COMMUNITY BUILDOUT

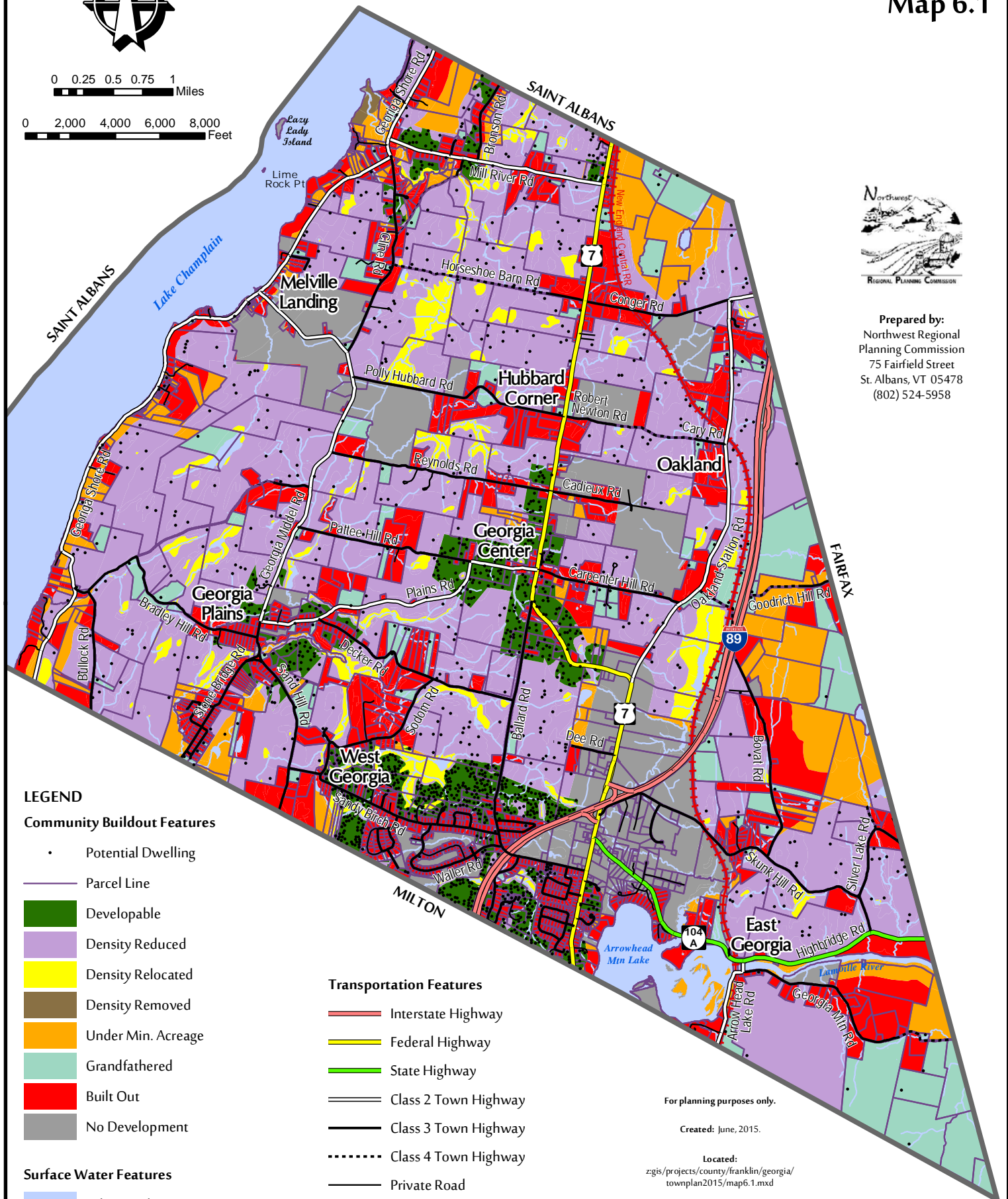
## Map 6.1

0 0.25 0.5 0.75 1 Miles

0 2,000 4,000 6,000 8,000 Feet



Prepared by:  
Northwest Regional  
Planning Commission  
75 Fairfield Street  
St. Albans, VT 05478  
(802) 524-5958



### LEGEND

#### Community Buildout Features

- Potential Dwelling
- Parcel Line
- Developable
- Density Reduced
- Density Relocated
- Density Removed
- Under Min. Acreage
- Grandfathered
- Built Out
- No Development

#### Surface Water Features

- Lake, Pond or River
- River, Stream or Brook

#### Transportation Features

- Interstate Highway
- Federal Highway
- State Highway
- Class 2 Town Highway
- Class 3 Town Highway
- Class 4 Town Highway
- Private Road
- Railroad
- Legal Trail

For planning purposes only.

Created: June, 2015.

#### Located:

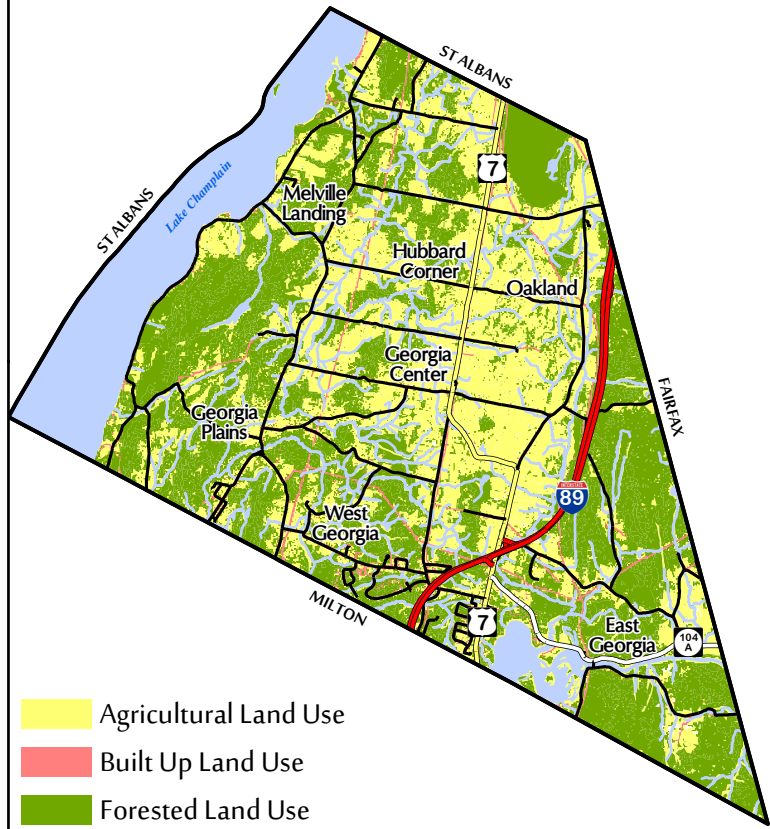
zgis/projects/county/franklin/georgia/  
townplan2015/map6.1.mxd

#### Data Sources:

All map features derived from VGIS digital coverages.  
Vermont Coordinate System Transverse Mercator, NAD 83.  
North arrow on map refers to Grid North.

# LAND COVER

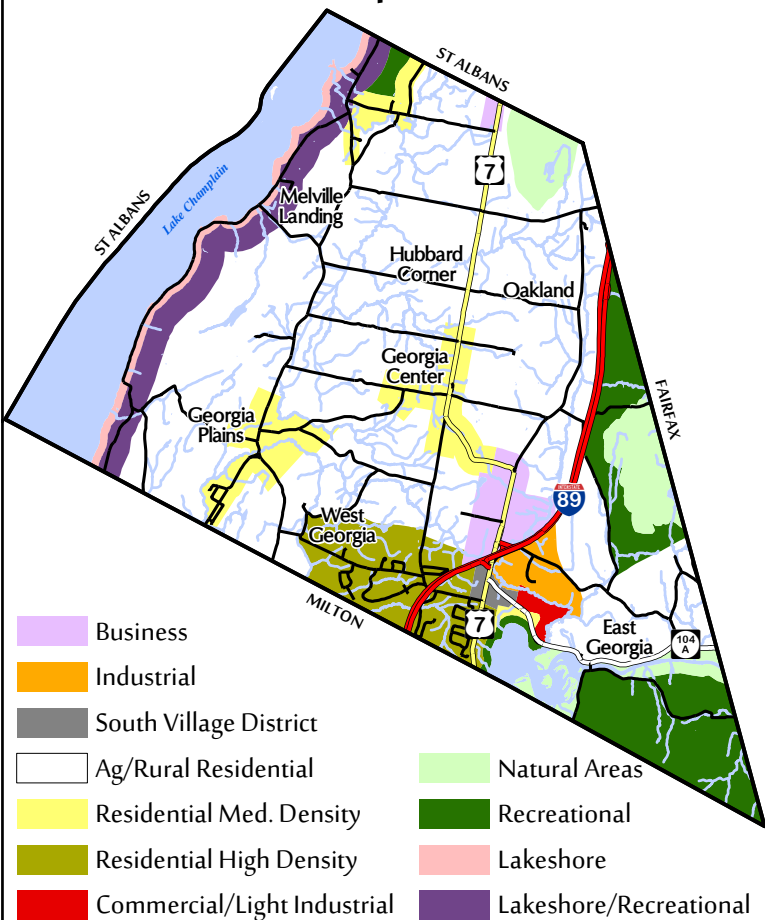
## Map 6.2





# EXISTING LAND USE & ZONING MAP

## Map 6.3



# PROPOSED LAND USE

## Map 6.4

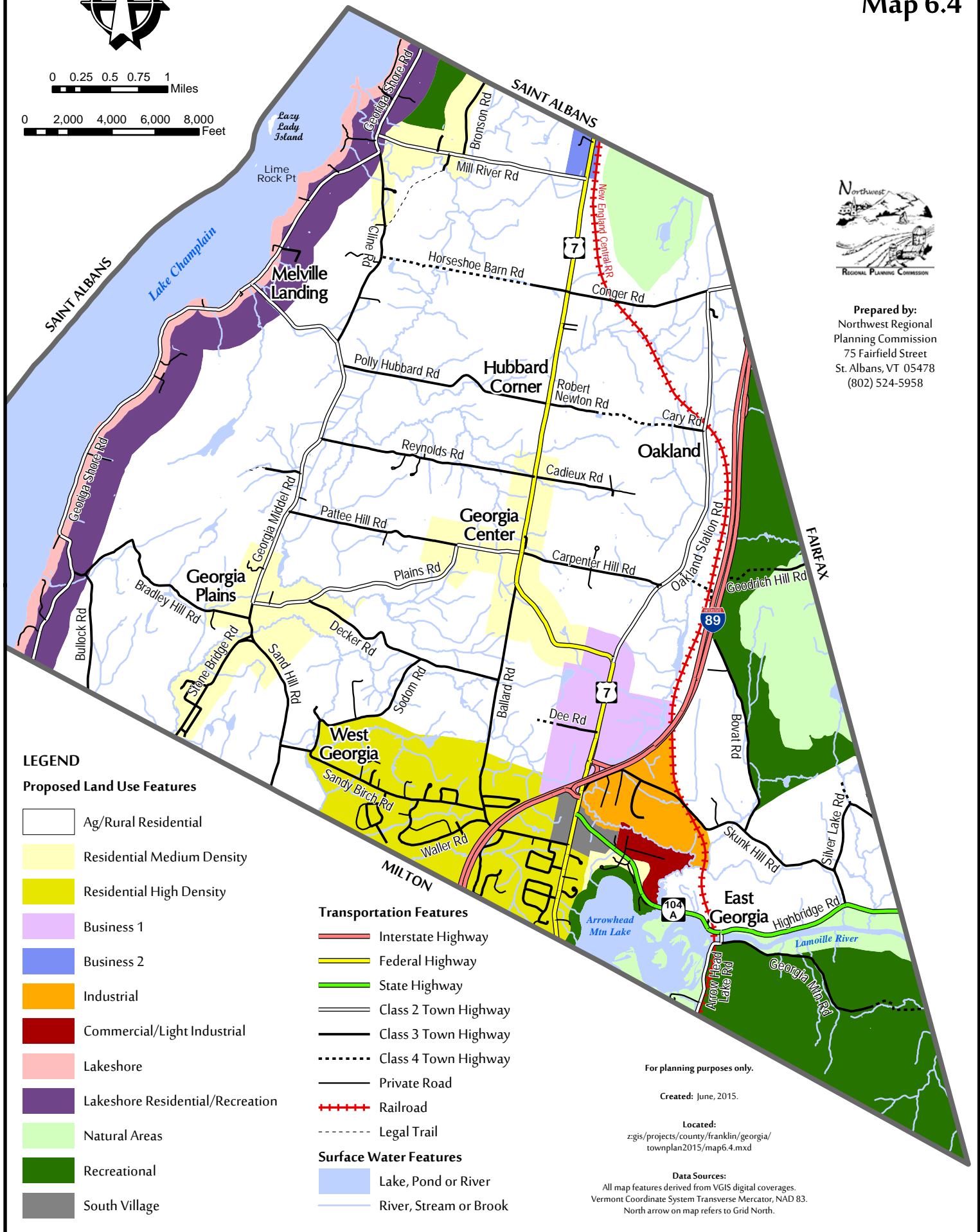


0 0.25 0.5 0.75 1 Miles

0 2,000 4,000 6,000 8,000 Feet



Prepared by:  
Northwest Regional  
Planning Commission  
75 Fairfield Street  
St. Albans, VT 05478  
(802) 524-5958



### LEGEND

#### Proposed Land Use Features

- Ag/Rural Residential
- Residential Medium Density
- Residential High Density
- Business 1
- Business 2
- Industrial
- Commercial/Light Industrial
- Lakeshore
- Lakeshore Residential/Recreation
- Natural Areas
- Recreational
- South Village

#### Transportation Features

- Interstate Highway
- Federal Highway
- State Highway
- Class 2 Town Highway
- Class 3 Town Highway
- Class 4 Town Highway
- Private Road
- Railroad
- Legal Trail

#### Surface Water Features

- Lake, Pond or River
- River, Stream or Brook

For planning purposes only.

Created: June, 2015.

#### Located:

zgis/projects/county/franklin/georgia/  
townplan2015/map6.4.mxd

#### Data Sources:

All map features derived from VGIS digital coverages.  
Vermont Coordinate System Transverse Mercator, NAD 83.  
North arrow on map refers to Grid North.