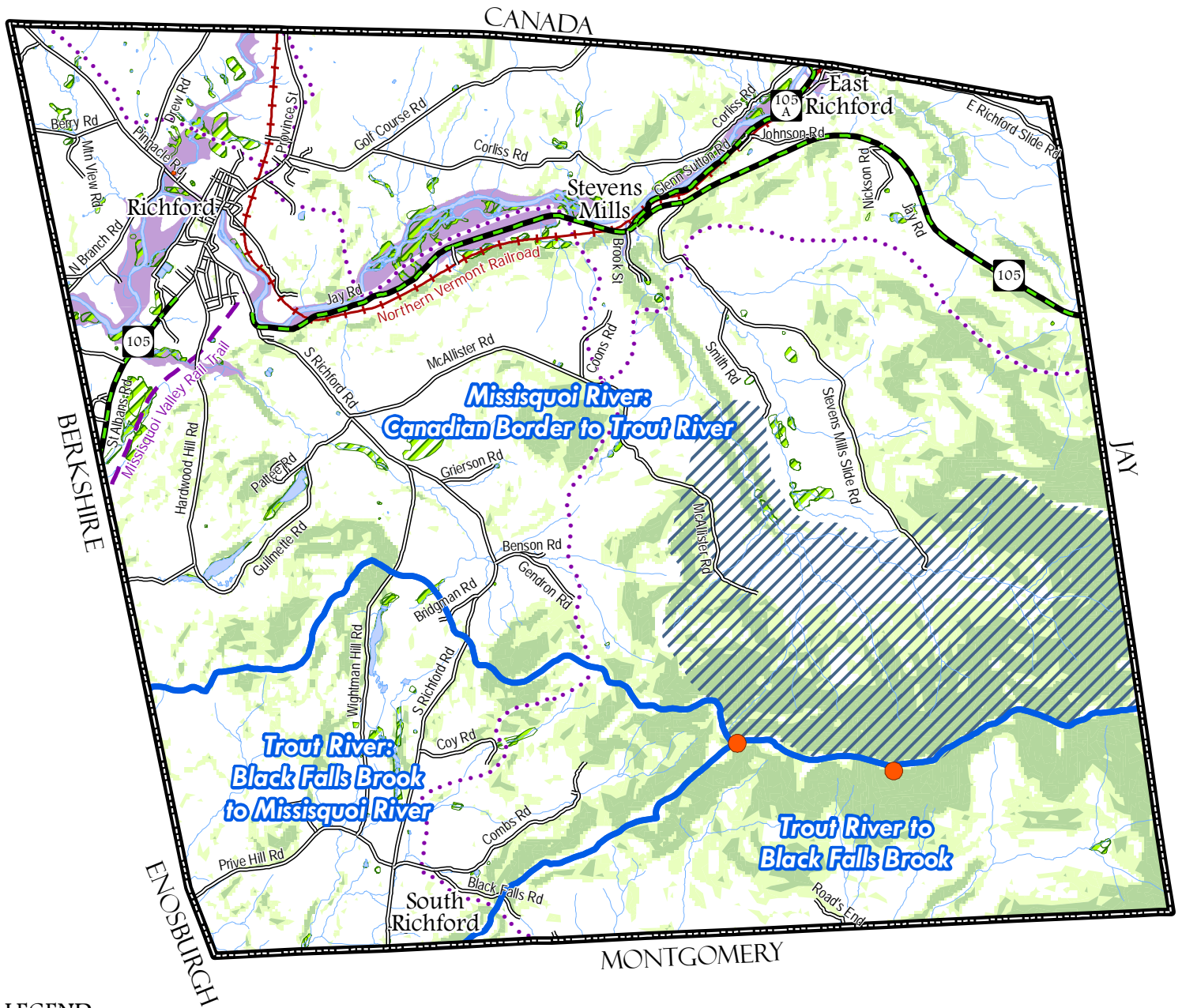


CRITICAL AREAS

Town of Richford



LEGEND

Critical Area Features

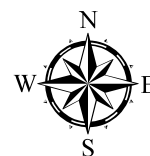
- Slopes > 20%
- Slopes > 25%
- 100 Year Flood Zone
- Threatened or Endangered Species
- Wetland
- Surface Water Protection Area
- Watershed Boundary
- Boundary Feature
- Town Boundary

Transportation Features

- State Highway
- Road
- Railroad
- Missisquoi Valley Rail Trail
- VAST Trail

Surface Water Features

- River, Stream or Brook
- Pond or River



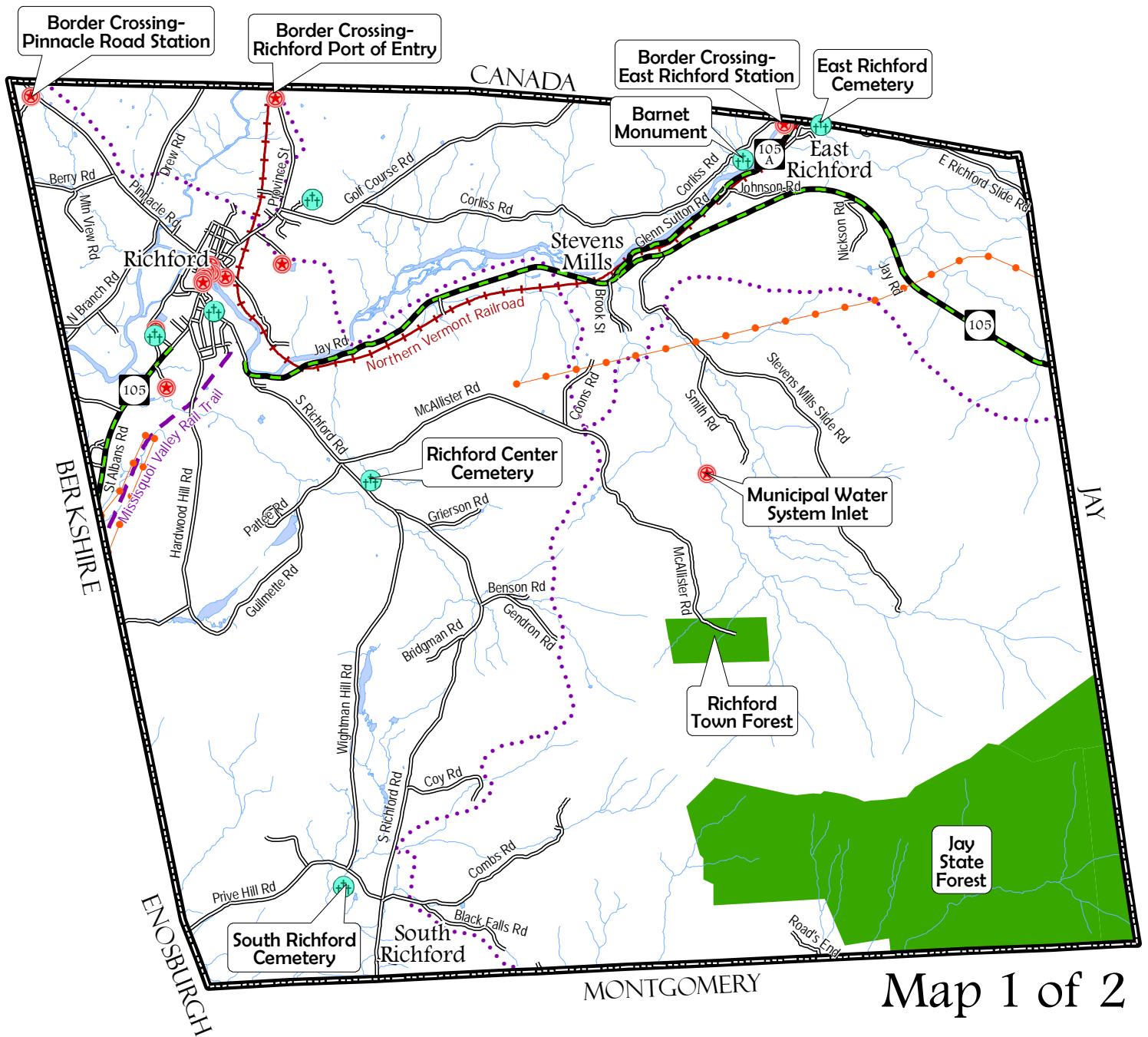
Vermont Coordinate System
 Transverse Mercator, NAD 83.
 For planning purposes only.
 Prepared by:
 Northwest RPC
 75 Fairfield Street
 St. Albans, VT 05478
 (802) 524-5958
 www.nrpcvt.com
 May, 2015.
z:/gis/projects/county/franklin/richford/townplan2015



0 2,500 5,000 7,500 10,000
 Feet

0 0.5 1 1.5 2
 Miles

FACILITIES & SERVICES Town of Richford



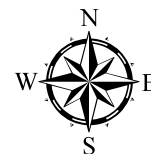
LEGEND

Facility or Service Features

- Facility
- Cemetery
- Electric Transmission Line
- Public Land
- Surface Water Features**
- River, Stream or Brook
- Pond or River

Transportation Features

- State Highway
- Road
- Railroad
- Missisquoi Valley Rail Trail
- VAST Trail
- Boundary Feature**
- Town Boundary



Vermont Coordinate System
Transverse Mercator, NAD 83.
For planning purposes only.
Prepared by:
Northwest RPC
75 Fairfield Street
St. Albans, VT 05478
(802) 524-5958
www.nrpcvt.com
May, 2015.
z:/gis/projects/county/franklin/
richford/townplan2015

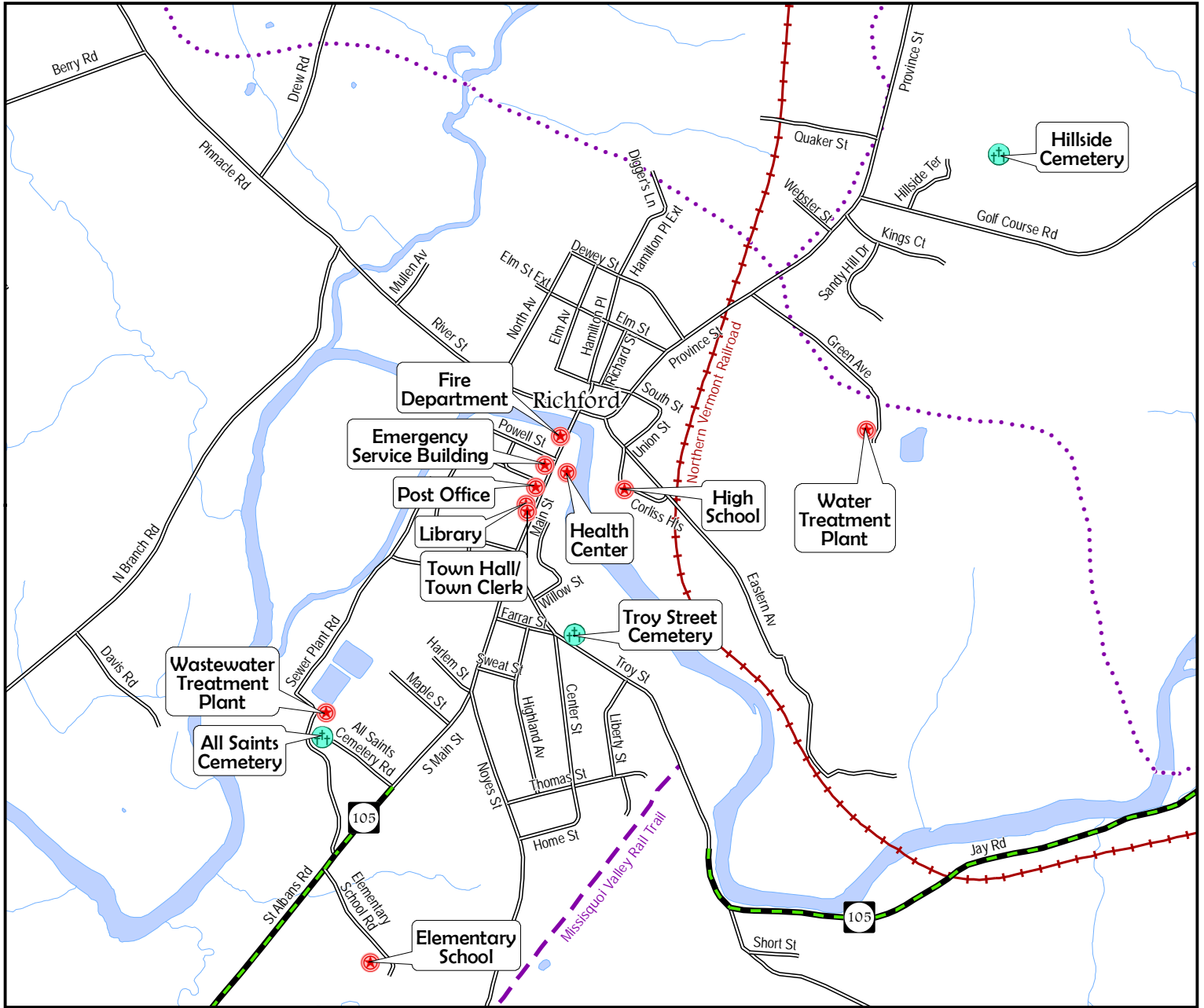


0 2,500 5,000 7,500 10,000
Feet

0 0.5 1 1.5 2
Miles

Map 1 of 2

FACILITIES & SERVICES Town of Richford



Map 2 of 2

LEGEND

Facility or Service Features

- Facility
- Cemetery
- Electric Transmission Line
- Public Land

Surface Water Features

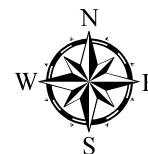
- River, Stream or Brook
- Pond or River

Transportation Features

- State Highway
- Road
- Railroad
- Missisquoi Valley Rail Trail
- VAST Trail

Boundary Feature

- Town Boundary



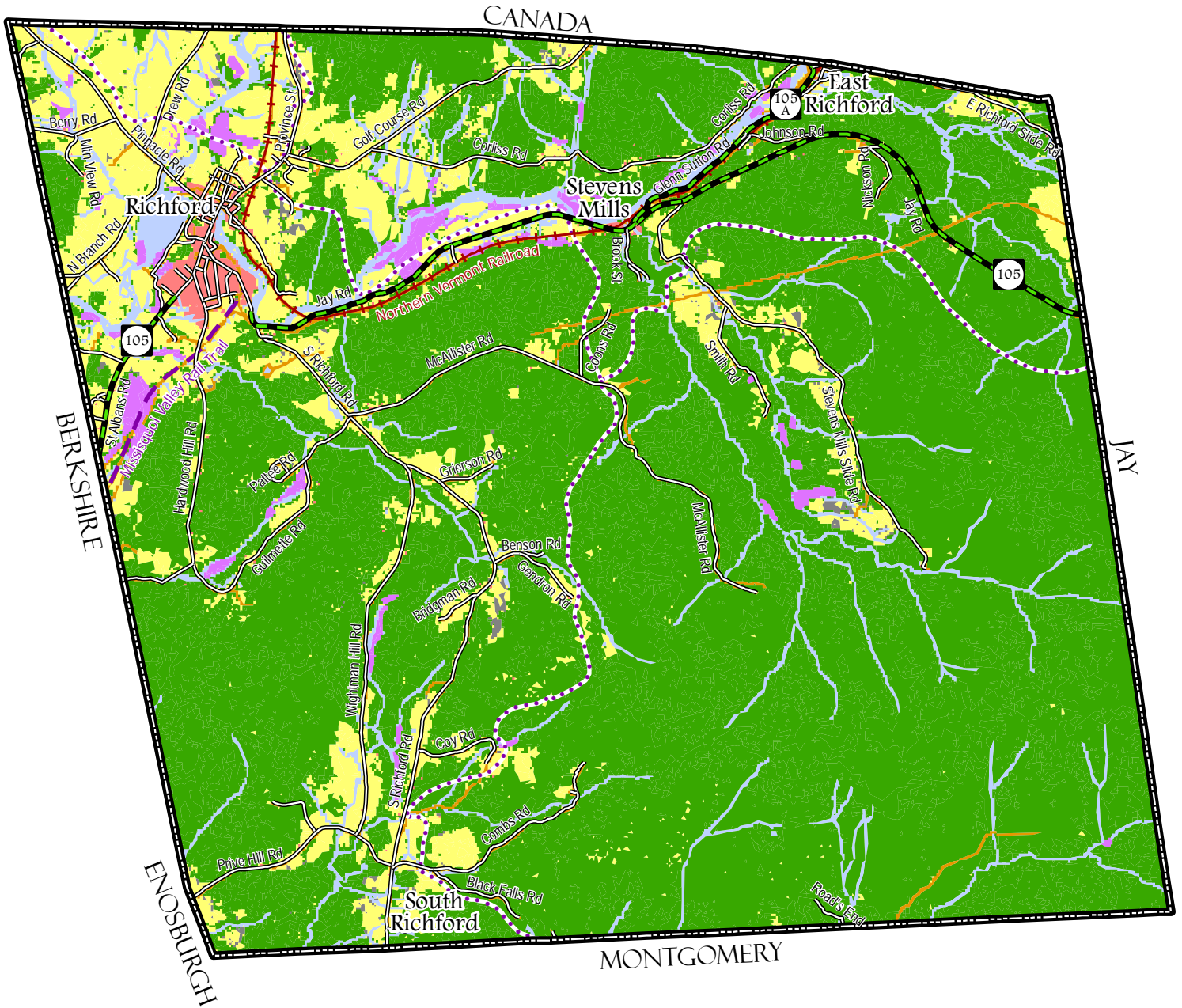
Vermont Coordinate System
Transverse Mercator, NAD 83.
For planning purposes only.
Prepared by:
Northwest RPC
75 Fairfield Street
St. Albans, VT 05478
(802) 524-5958
www.nrpcvt.com
May, 2015.
z:/gis/projects/county/franklin/
richford/townplan2015



0 500 1,000 1,500 2,000
Feet

0 0.1 0.2 0.3 0.4
Miles

LAND USE/LAND COVER Town of Richford



LEGEND

Land Use/Land Cover Features

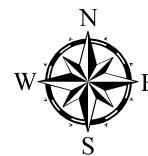
- Commercial, Industrial or Residential
- Deciduous, Coniferous or Mixed Forest
- Wetland or Forested Wetland
- Row Crop, Hay, Pasture or Other Agriculture
- Transportation or Utilities
- Brush
- Water

Transportation Features

- State Highway
- Road
- Railroad
- Missisquoi Valley Rail Trail
- VAST Trail

Boundary Feature

- Town Boundary



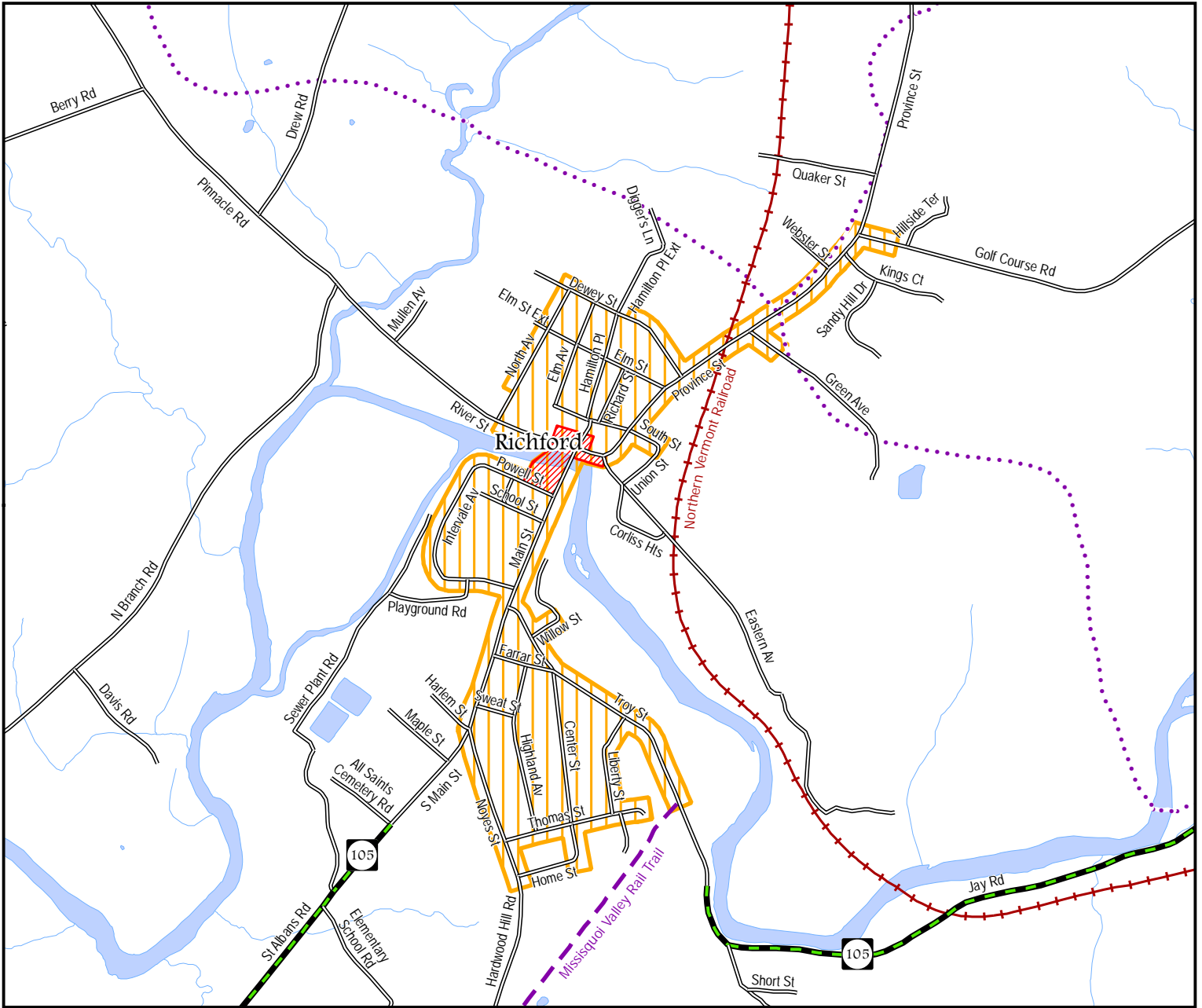
Vermont Coordinate System
Transverse Mercator, NAD 83.
For planning purposes only.
Prepared by:
Northwest RPC
75 Fairfield Street
St. Albans, VT 05478
(802) 524-5958
www.nrpcvt.com
May, 2015.
z:/gis/projects/county/franklin/
richford/townplan2015



0 2,500 5,000 7,500 10,000
Feet

0 0.5 1 1.5 2
Miles

NATIONAL & STATE DESIGNATION Town of Richford



LEGEND

Designation Features

National Designation

State Designation

Transportation Features

State Highway

Road

Railroad

Missisquoi Valley Rail Trail

VAST Trail

Surface Water Features

River, Stream or Brook

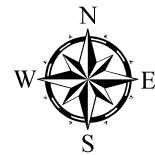
Pond or River



Vermont Coordinate System
Transverse Mercator, NAD 83.
For planning purposes only.

Prepared by:
Northwest RPC
75 Fairfield Street
St. Albans, VT 05478
(802) 524-5958
www.nrpcvt.com
May, 2015.

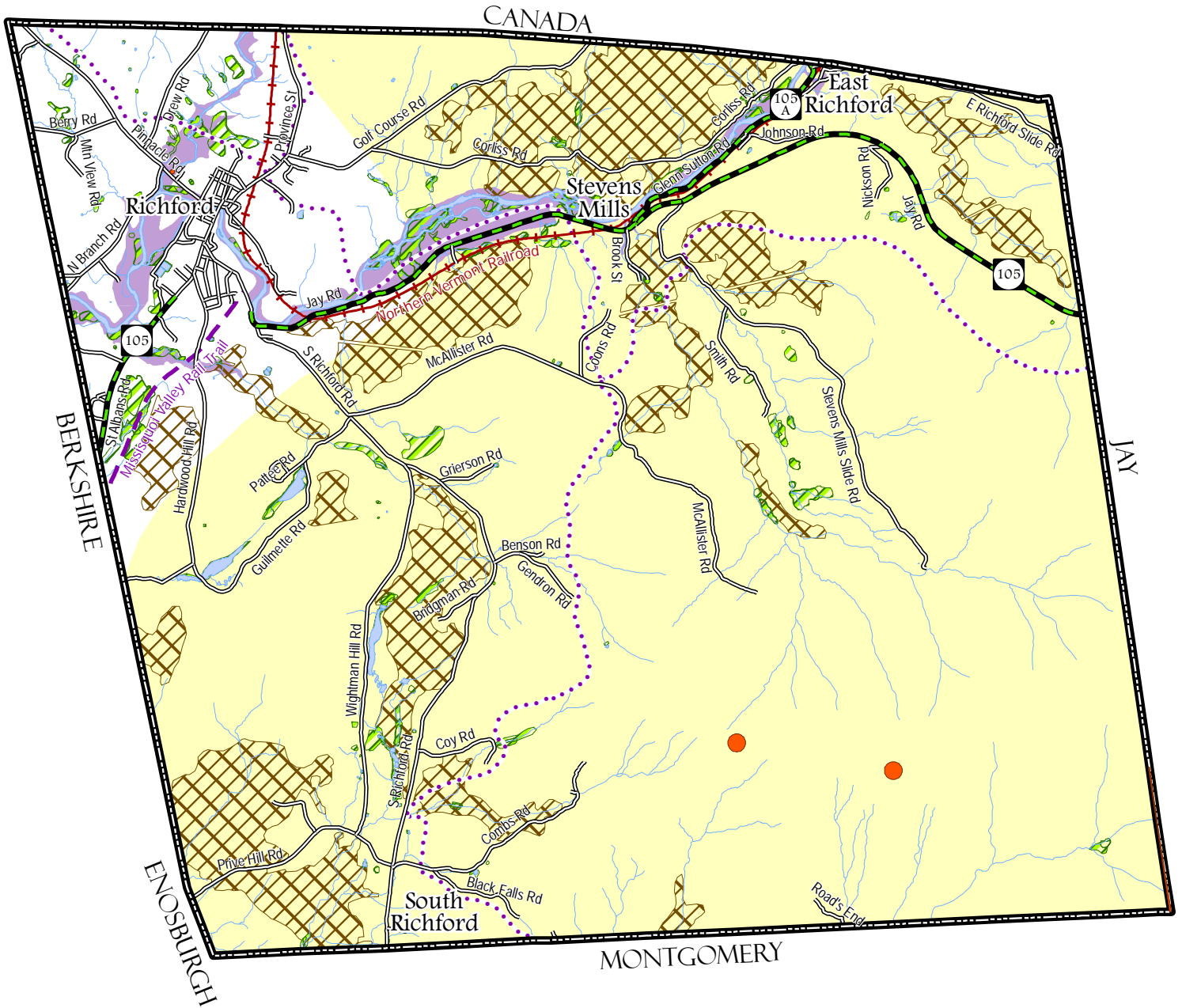
z:/gis/projects/county/franklin/richford/townplan2015



0 500 1,000 1,500 2,000
Feet

0 0.1 0.2 0.3 0.4
Miles

NATURAL AREAS Town of Richford



LEGEND

Natural Resource Features

- 100 Year Flood Zone
- Threatened or Endangered Species
- Wetland
- Deer Wintering Area
- Bear Habitat

Surface Water Features

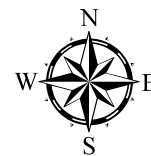
- River, Stream or Brook
- Pond or River

Transportation Features

- State Highway
- Road
- Railroad
- Missisquoi Valley Rail Trail
- VAST Trail

Boundary Feature

- Town Boundary



Vermont Coordinate System
Transverse Mercator, NAD 83.
For planning purposes only.

Prepared by:
Northwest RPC
75 Fairfield Street
St. Albans, VT 05478
(802) 524-5958
www.nrpcvt.com
May, 2015.

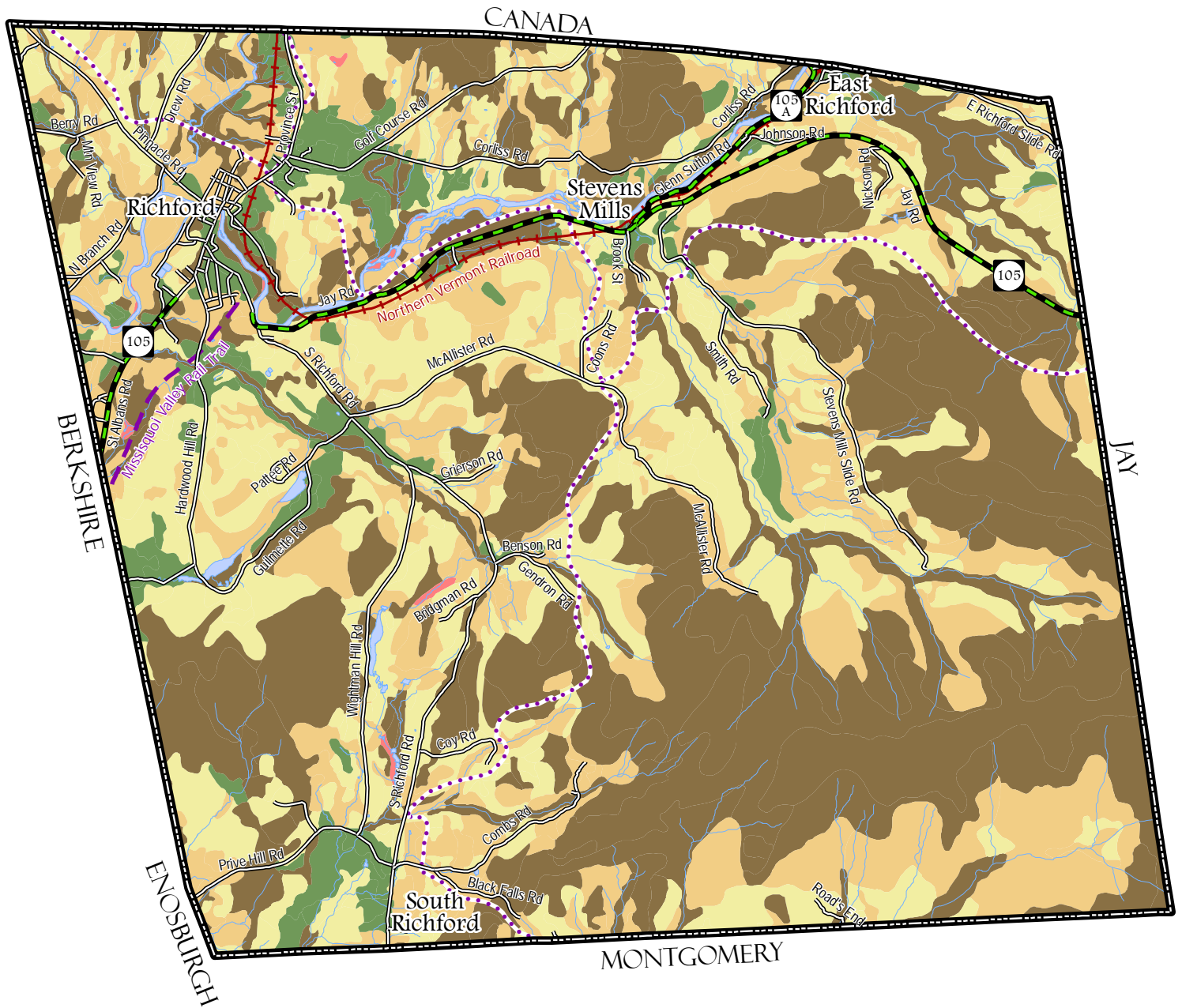
z:/gis/projects/county/franklin/
richford/townplan2015



0 2,500 5,000 7,500 10,000
Feet

0 0.5 1 1.5 2
Miles

SEPTIC SUITABILITY Town of Richford



LEGEND

Land Use/Land Cover Features

- Well Suited
- Moderately Suited
- Marginally Suited
- Not Suited
- Not Rated

Surface Water Features

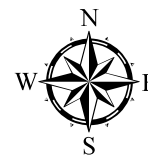
- River, Stream or Brook
- Pond or River

Transportation Features

- State Highway
- Road
- Railroad
- Missisquoi Valley Rail Trail
- VAST Trail

Boundary Feature

- Town Boundary



Vermont Coordinate System
Transverse Mercator, NAD 83.
For planning purposes only.

Prepared by:
Northwest RPC
75 Fairfield Street
St. Albans, VT 05478
(802) 524-5958
www.nrpcvt.com
May, 2015.

z:/gis/projects/county/franklin/
richford/townplan2015

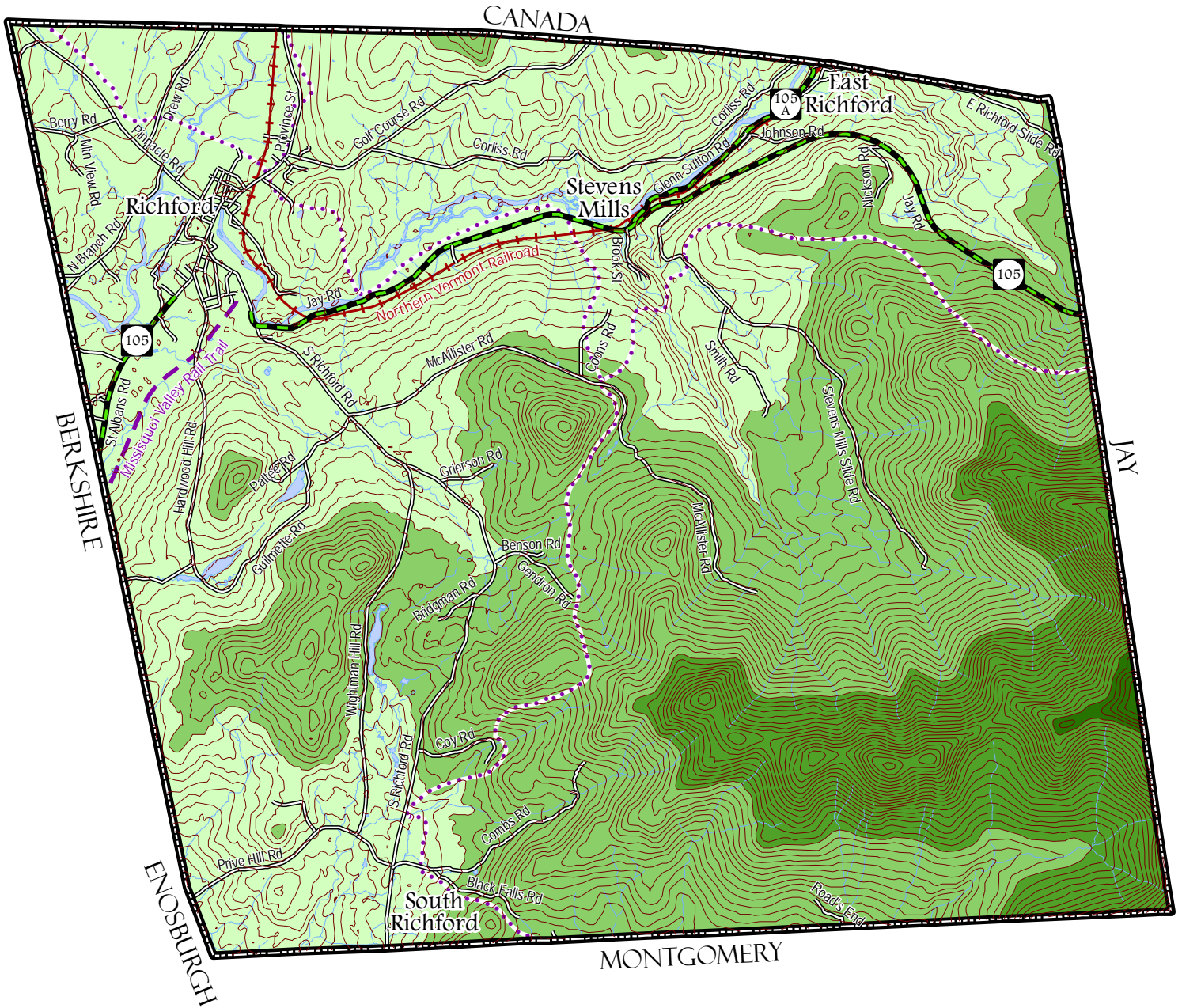


0 2,500 5,000 7,500 10,000
Feet

0 0.5 1 1.5 2
Miles


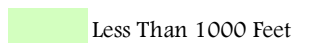
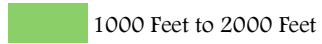


TOPOGRAPHY

Town of Richford

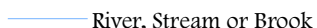
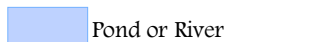


LEGEND


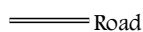



Contour Features

-  50 Foot Contour Line
-  Less Than 1000 Feet
-  1000 Feet to 2000 Feet
-  2000 Feet to 3000 Feet
-  3000 Feet or More

Surface Water Features

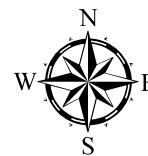
-  River, Stream or Brook
-  Pond or River

Transportation Features

-  State Highway
-  Road
-  Railroad
-  Missisquoi Valley Rail Trail
-  VAST Trail

Boundary Feature

-  Town Boundary



Vermont Coordinate System
 Transverse Mercator, NAD 83.
 For planning purposes only.

Prepared by:
 Northwest RPC
 75 Fairfield Street
 St. Albans, VT 05478
 (802) 524-5958
 www.nrpcvt.com
 May, 2015.

z:/gis/projects/county/franklin/
 richford/townplan2015

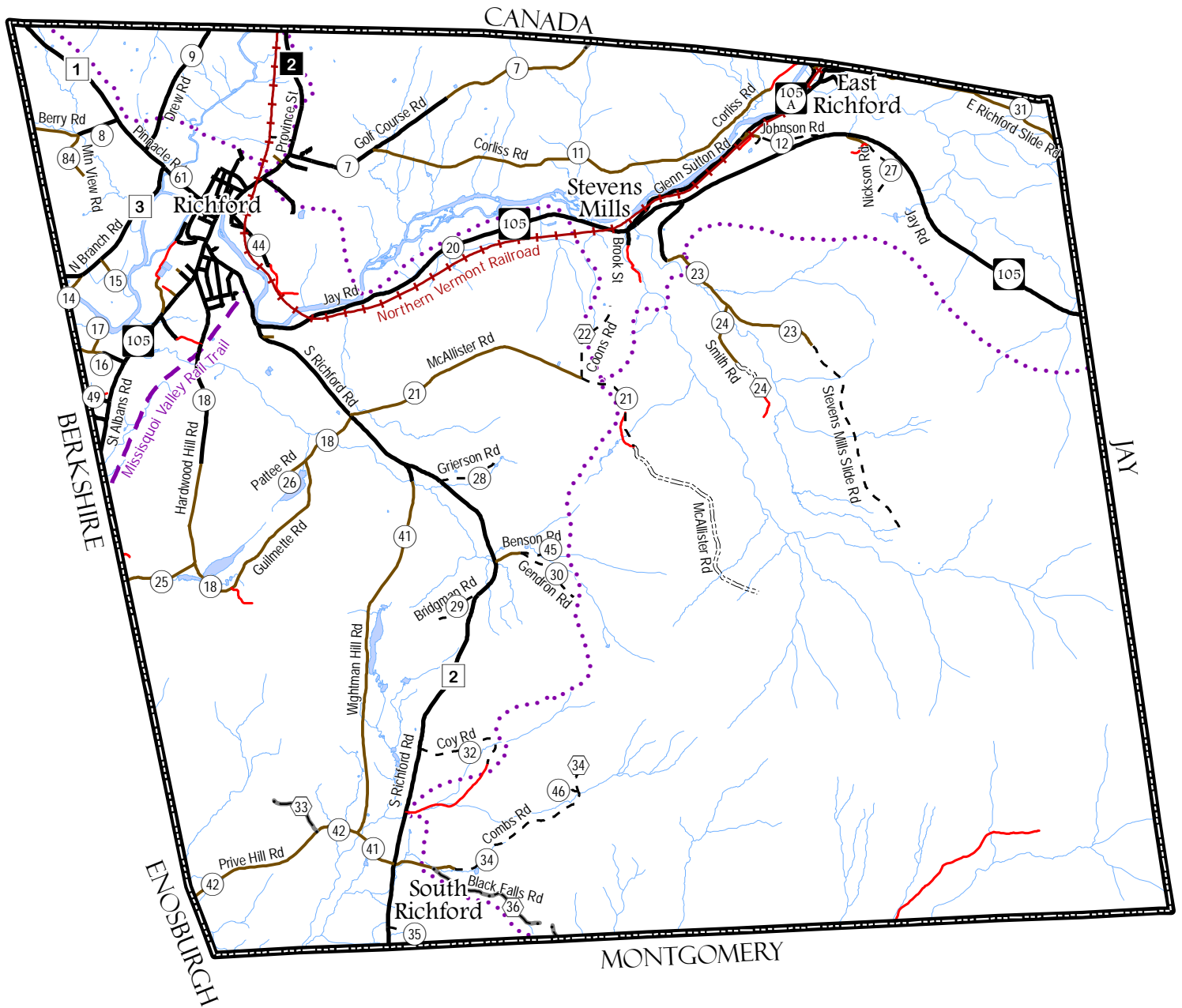


0 2,500 5,000 7,500 10,000
 Feet

0 0.5 1 1.5 2
 Miles

TRANSPORTATION SYSTEM

Town of Richford



LEGEND

Transportation Features

- Paved
- Gravel
- Soil or Graded
- Unimproved/Primitive
- Impassable/Untraveled
- Unknown Surface Type
- Railroad
- Missisquoi Valley Rail Trail
- VAST Trail

Road Class Features

- State Numbered Route
- Class 1 Town Highway
- Class 2 Town Highway
- Class 3 Town Highway
- Class 4 Town Highway

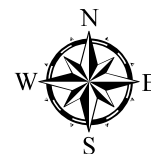
Surface Water Features

- River, Stream or Brook
- Pond or River

Boundary Feature

- Town Boundary

Map 1 of 2



Vermont Coordinate System
 Transverse Mercator, NAD 83.
 For planning purposes only.
 Prepared by:
 Northwest RPC
 75 Fairfield Street
 St. Albans, VT 05478
 (802) 524-5958
 www.nrpcvt.com
 May, 2015.
 z:/gis/projects/county/franklin/
 richford/townplan2015

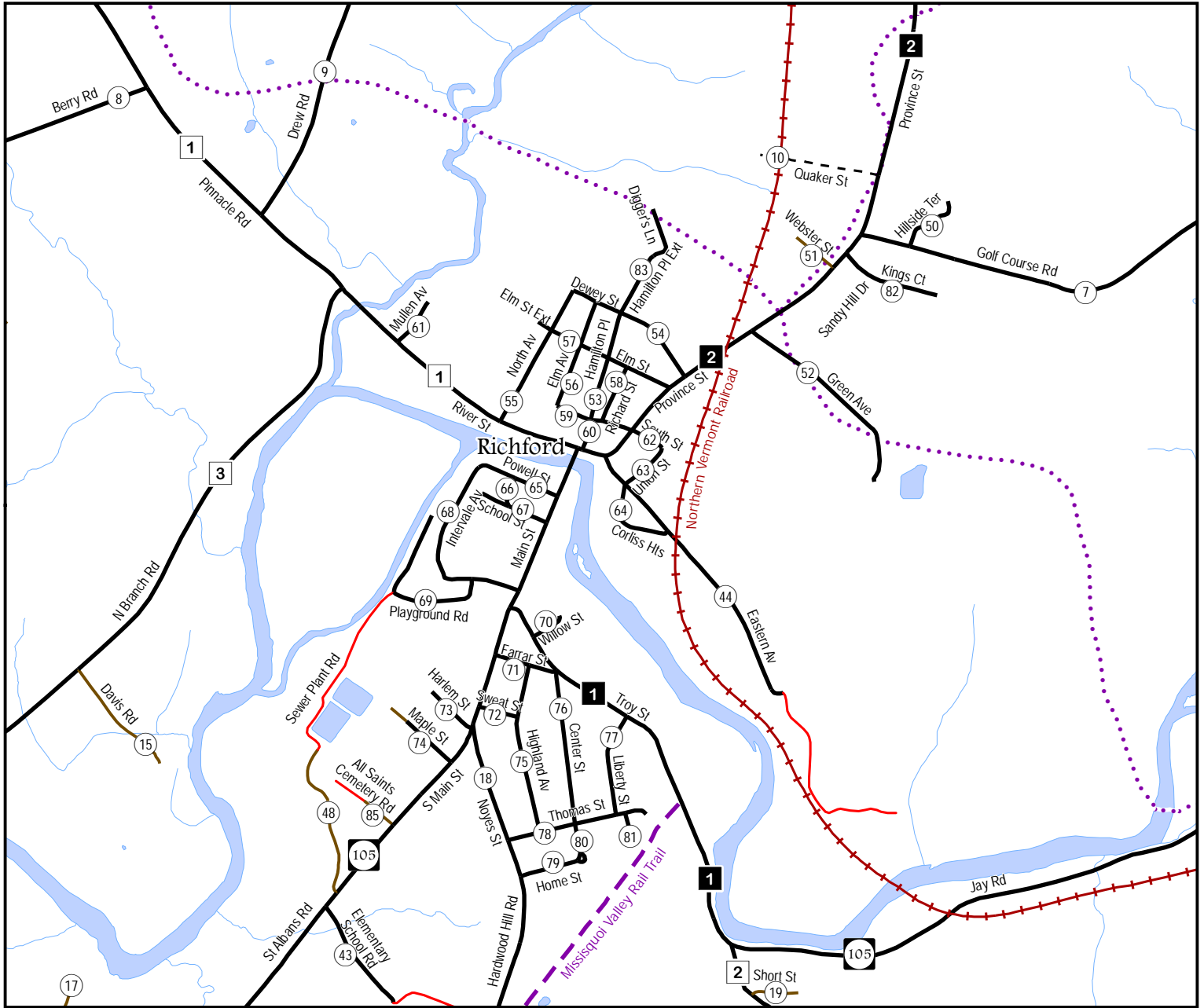


0 2,500 5,000 7,500 10,000
 Feet

0 0.5 1 1.5 2
 Miles

TRANSPORTATION SYSTEM

Town of Richford



LEGEND

Transportation Features

- Paved
- Gravel
- Soil or Graded
- Unimproved/Primitive
- Impassable/Untraveled
- Unknown Surface Type
- Railroad
- Missisquoi Valley Rail Trail
- VAST Trail

Road Class Features

- State Numbered Route
- Class 1 Town Highway
- Class 2 Town Highway
- Class 3 Town Highway
- Class 4 Town Highway

Surface Water Features

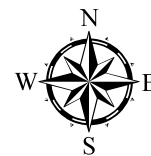
- River, Stream or Brook

- Pond or River

Boundary Feature

- Town Boundary

Map 2 of 2



Vermont Coordinate System
 Transverse Mercator, NAD 83.
 For planning purposes only.
 Prepared by:
 Northwest RPC
 75 Fairfield Street
 St. Albans, VT 05478
 (802) 524-5958
 www.nrpcvt.com
 May, 2015.
 z:/gis/projects/county/franklin/
 richford/townplan2015

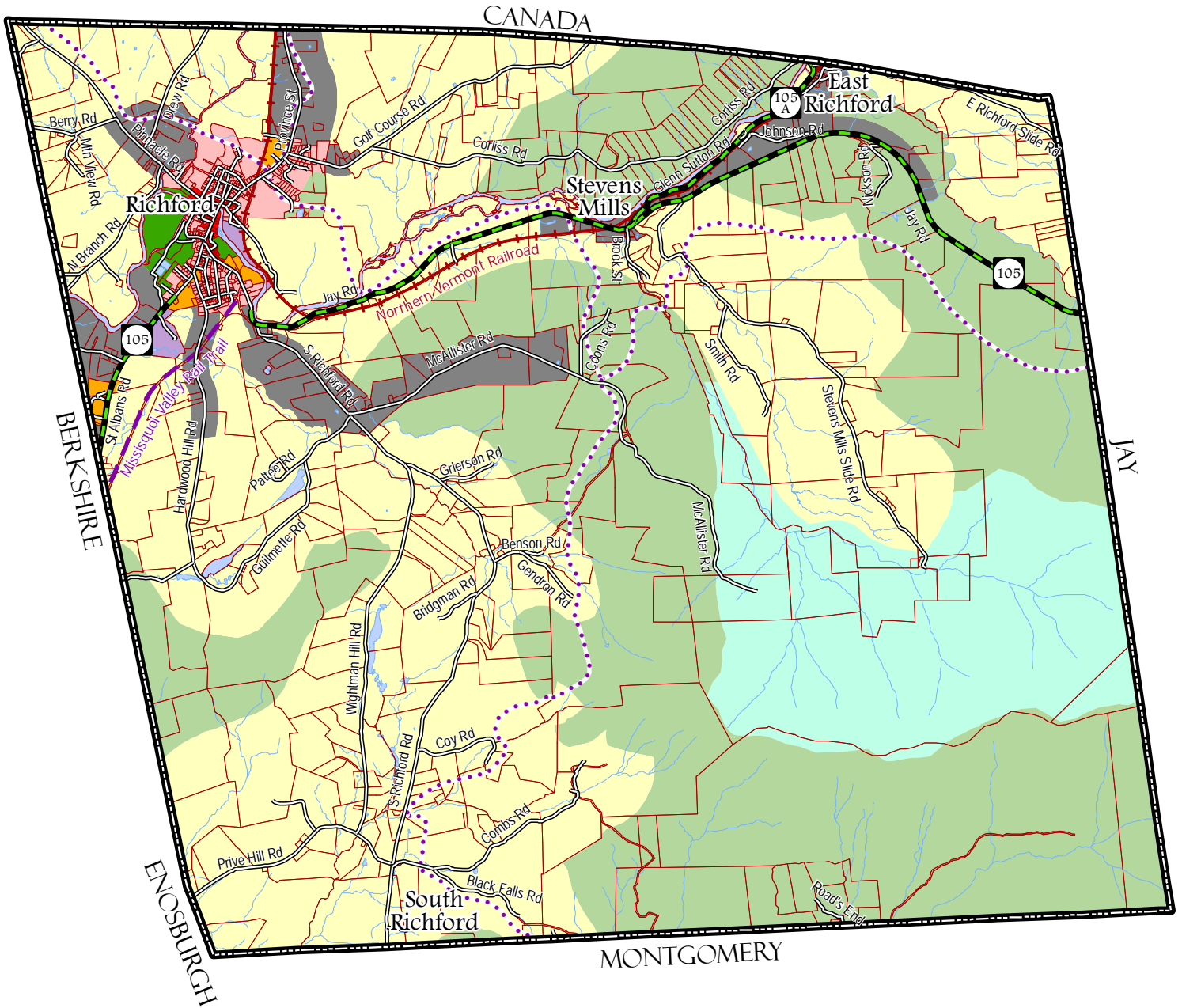


0 500 1,000 1,500 2,000
 Feet

0 0.1 0.2 0.3 0.4
 Miles

ZONING MAP

Town of Richford



LEGEND

Proposed Land Use Features

- Village Mixed Use
- Village Residential
- Commercial/Industrial
- Education
- Forest/Conservation
- Recreation/Conservation
- Rural Residential
- Agricultural
- Water Supply Protection
- Reservoir Protection Overlay

Transportation Features

- State Highway
- Road
- Railroad
- Missisquoi Valley Rail Trail
- VAST Trail

Surface Water Features

- River, Stream or Brook
- Pond or River

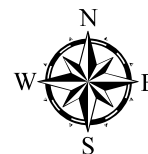
Parcel Feature

- Parcel Line

Boundary Feature

- Town Boundary

Map 1 of 2



Vermont Coordinate System
 Transverse Mercator, NAD 83.
 For planning purposes only.
 Prepared by:
 Northwest RPC
 75 Fairfield Street
 St. Albans, VT 05478
 (802) 524-5958
 www.nrpcvt.com
 May, 2015.
z:/gis/projects/county/franklin/richford/townplan2015

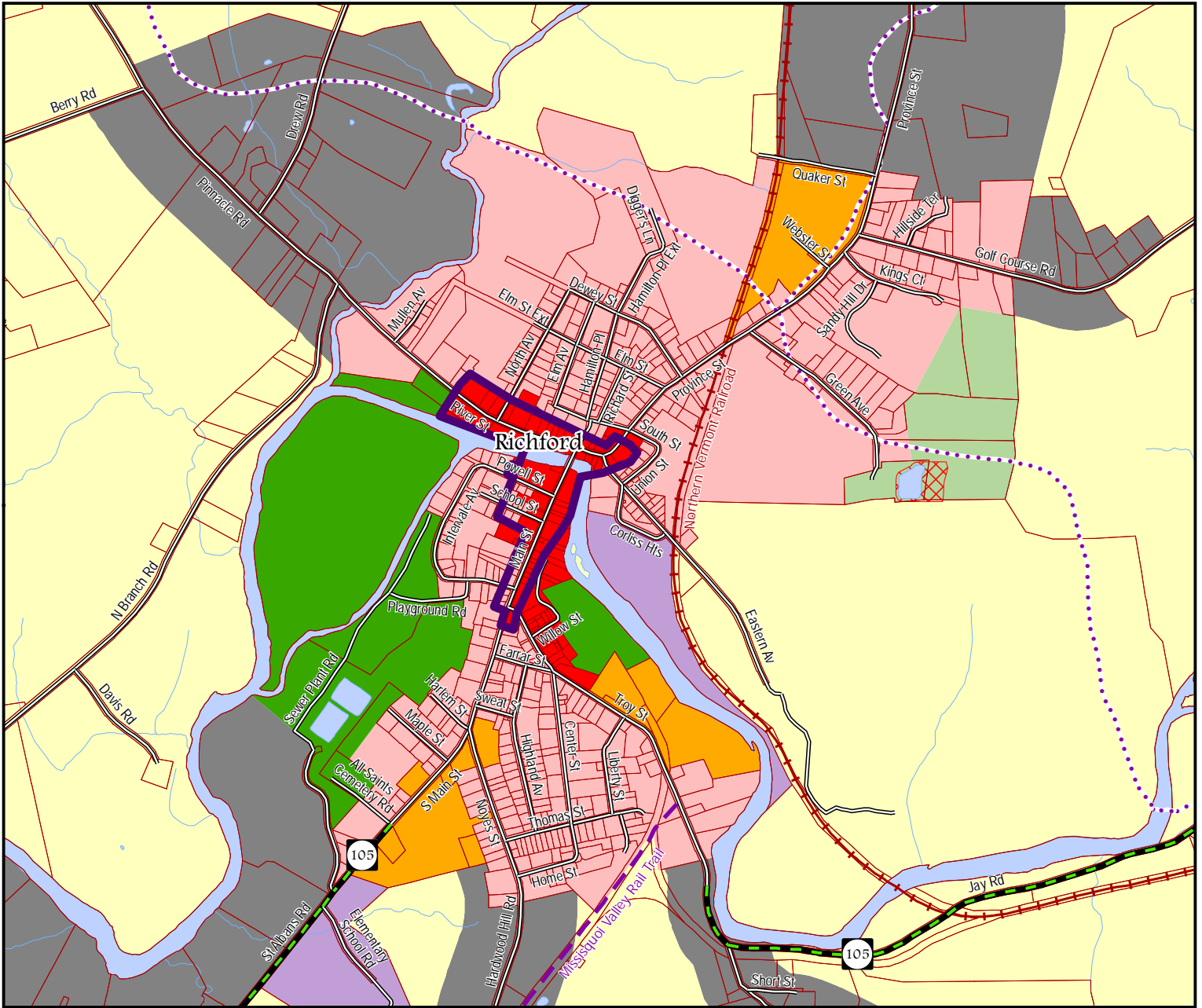


0 2,500 5,000 7,500 10,000 Feet

0 0.5 1 1.5 2 Miles

ZONING MAP

Town of Richford



LEGEND

Proposed Land Use Features

- Village Mixed Use
- Village Residential
- Commercial/Industrial
- Education
- Forest/Conservation
- Recreation/Conservation
- Rural Residential
- Agricultural
- Water Supply Protection
- Reservoir Protection Overlay

Transportation Features

- State Highway
- Road
- Railroad
- Missisquoi Valley Rail Trail
- VAST Trail

Surface Water Features

- River, Stream or Brook
- Pond or River

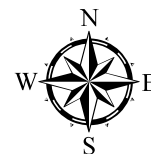
Parcel Feature

- Parcel Line

Boundary Feature

- Town Boundary
- Village Designation Boundary

Map 2 of 2



Vermont Coordinate System
 Transverse Mercator, NAD 83.
 For planning purposes only.
 Prepared by:
 Northwest RPC
 75 Fairfield Street
 St. Albans, VT 05478
 (802) 524-5958
 www.nrpcvt.com
 May, 2015.
 z:/gis/projects/county/franklin/
 richford/townplan2015



0 500 1,000 1,500 2,000
 Feet

0 0.1 0.2 0.3 0.4
 Miles