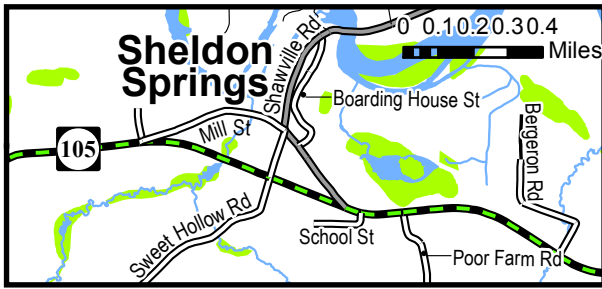
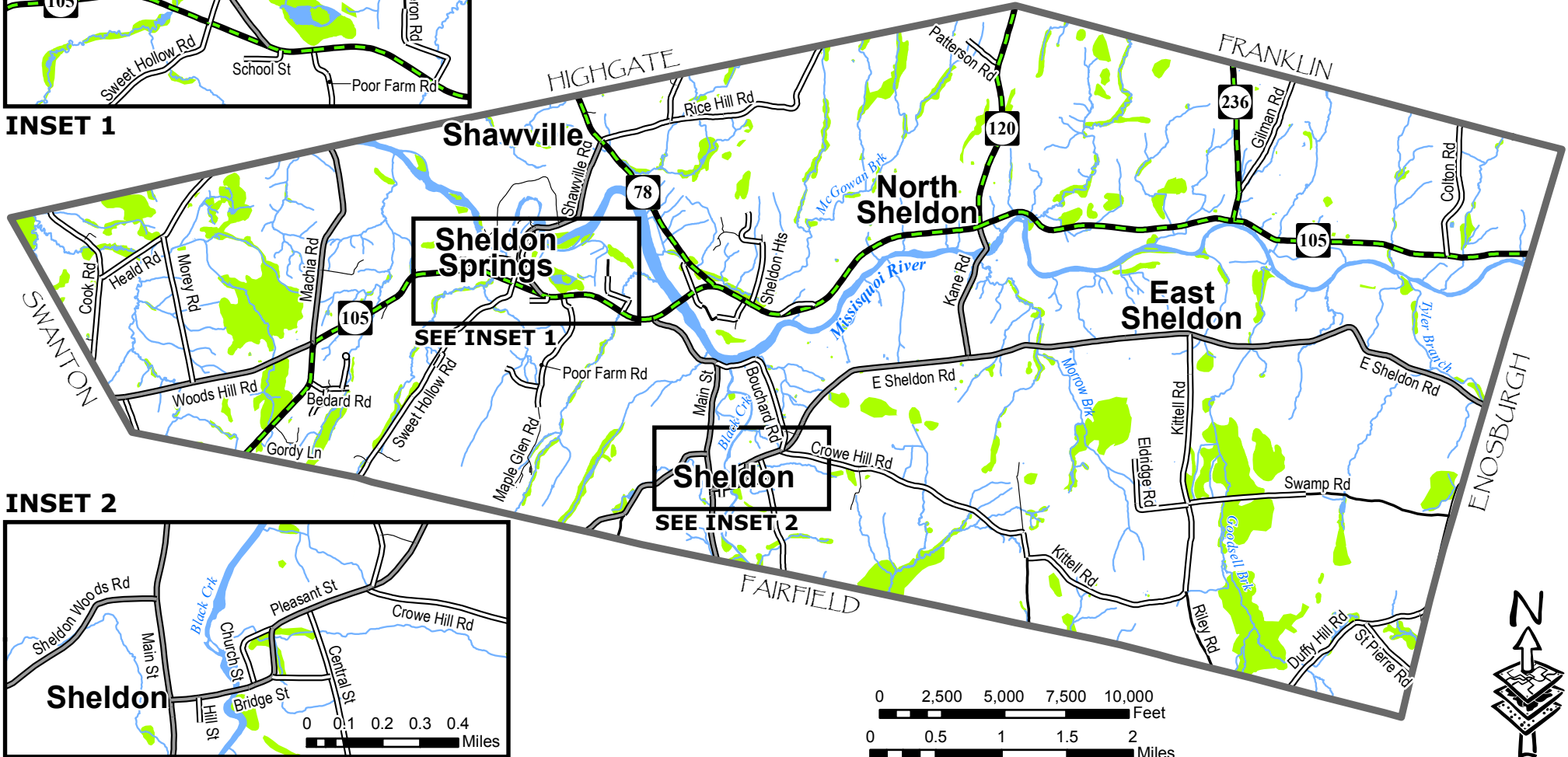


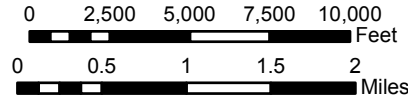
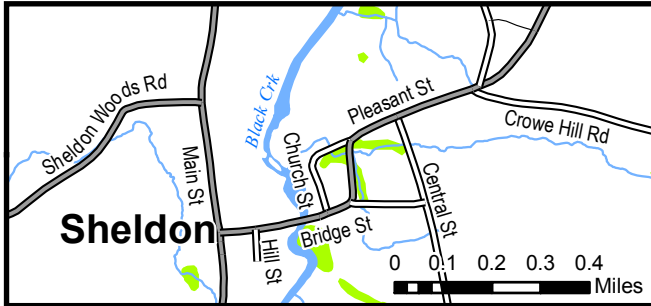
# TOWN OF SHELDON Base Map



**INSET 1**



**INSET 2**



## LEGEND

### Transportation Features

- State Highway
- Class 2 Town Highway
- Class 3 Town Highway
- Class 4 Town Highway
- Private Road

### Surface Water Features

- River, Stream or Brook
- Pond or River
- Wetland

### Other Feature

- Town Boundary

For planning purposes only.

**Data Sources:**  
All map features derived from VGIS digital coverages. Vermont Coordinate System Transverse Mercator, NAD 83. North arrow on map refers to Grid North.

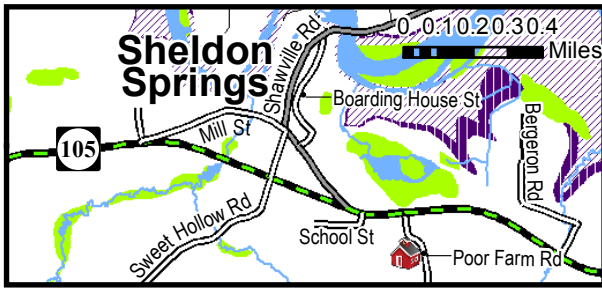
**Located:**  
z:gis/projects/county/franklin/sheldon/  
townplan2016/basemap.mxd

**Created:**  
August, 2016.

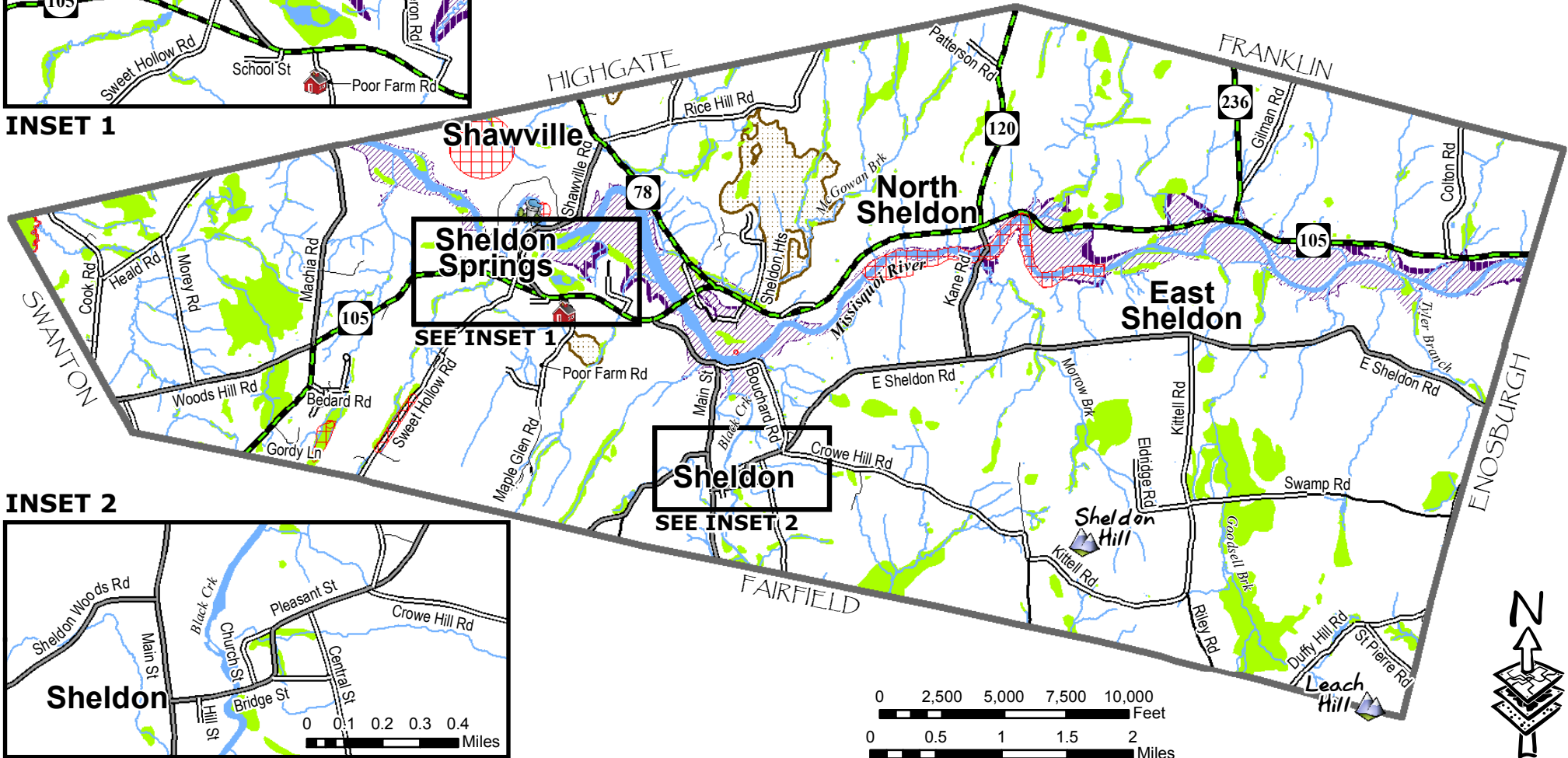


**Prepared by:**  
Northwest Regional  
Planning Commission  
75 Fairfield Street  
St. Albans, VT 05478  
(802) 524-5958  
www.nrpcvt.com

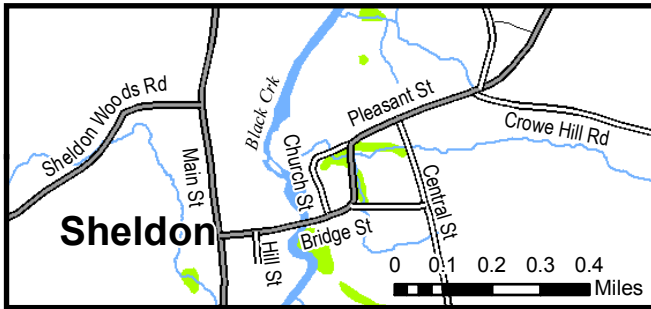
# TOWN OF SHELDON Critical Areas



**INSET 1**



**INSET 2**



## LEGEND

### Critical Features

- Dam
- School
- Summit
- Threatened or Endangered Species
- Deer Yards

### Transportation Features

- State Highway
- Class 2 Town Highway
- Class 3 Town Highway
- Class 4 Town Highway
- Private Road

### Surface Water Features

- River, Stream or Brook
- Pond or River
- Wetland
- 100 Year Flood Zone
- 500 Year Flood Zone

For planning purposes only.

**Data Sources:**  
All map features derived from VGIS digital coverages. Vermont Coordinate System Transverse Mercator, NAD 83. North arrow on map refers to Grid North.

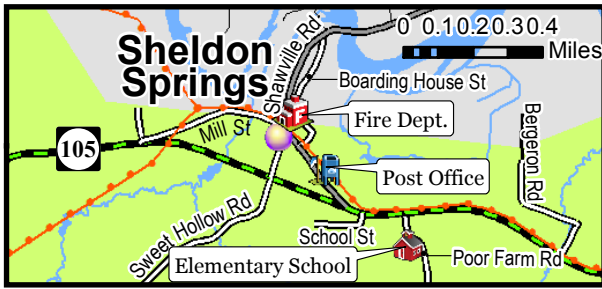
**Located:**  
z:gis/projects/county/franklin/sheldon/  
townplan2016/criticalareas.mxd

**Created:**  
August, 2016.

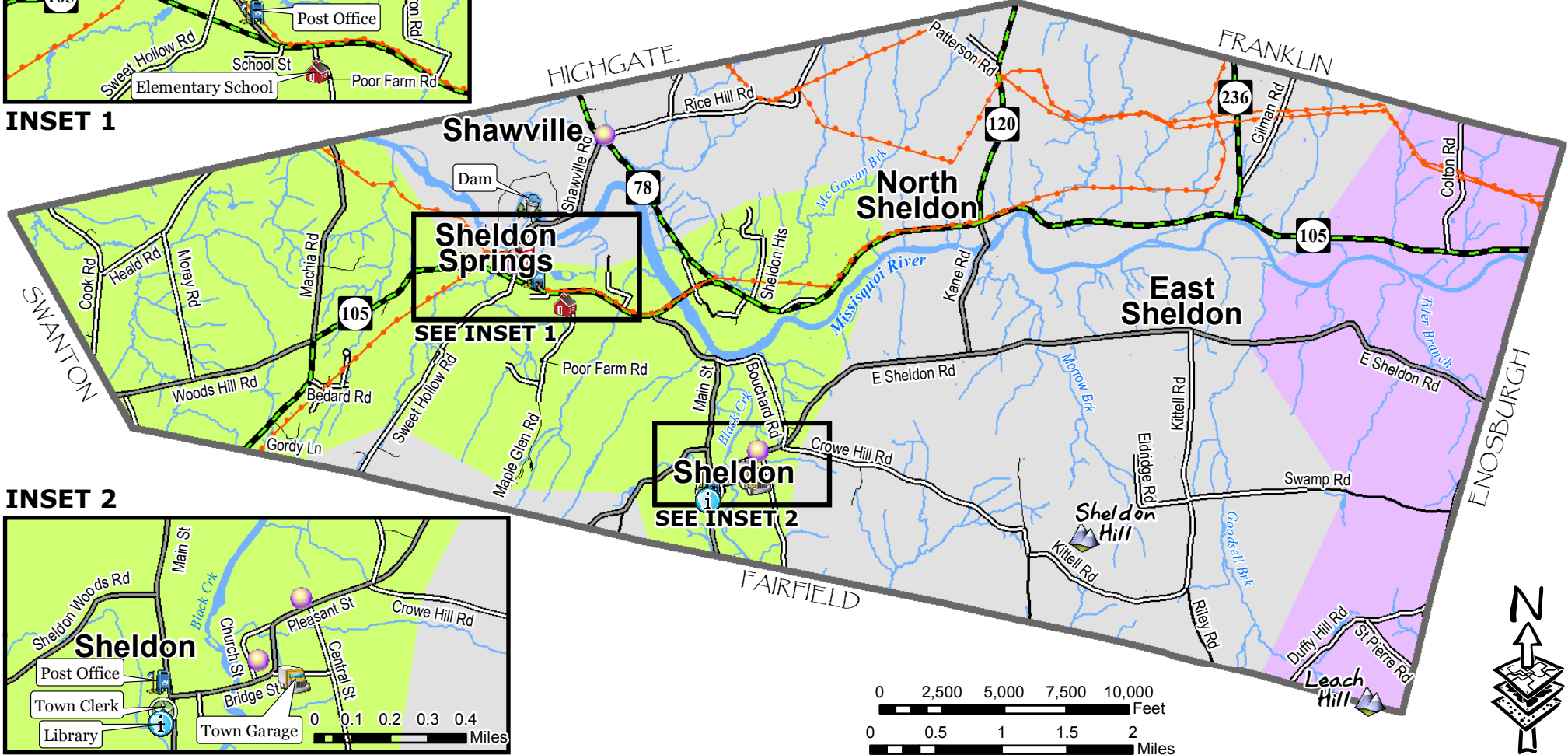


**Prepared by:**  
Northwest Regional  
Planning Commission  
75 Fairfield Street  
St. Albans, VT 05478  
(802) 524-5958  
www.nrpcvt.com

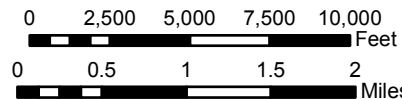
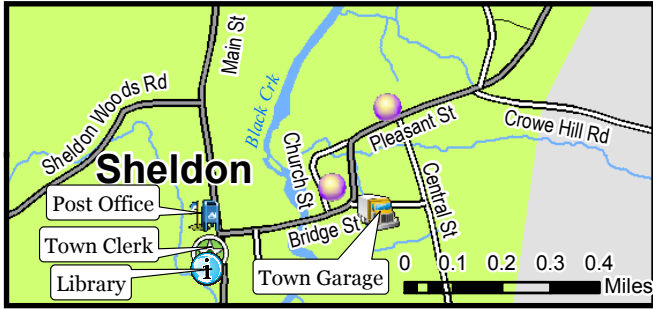
# TOWN OF SHELDON Facilities & Services



**INSET 1**



**INSET 2**



## LEGEND

### Facilities & Services Features

- Town Clerk
- Post Office
- Town Garage
- Library
- Dam
- School
- Church
- Fire Dept.
- Summit

### Electric Power Features

- Electric Transmission Line
- Green Mountain Power
- VT Electric Co-op
- Village of Enosburg Falls

### Surface Water Features

- River, Stream or Brook
- Pond or River

### Transportation Features

- State Highway
- Class 2 Town Highway
- Class 3 Town Highway
- Class 4 Town Highway
- Private Road

### Other Feature

- Town Boundary

For planning purposes only.

**Data Sources:**  
All map features derived from VGIS digital coverages. Vermont Coordinate System Transverse Mercator, NAD 83. North arrow on map refers to Grid North.

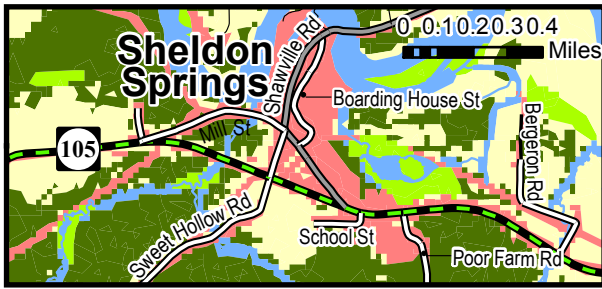
**Located:**  
z:gis/projects/county/franklin/sheldon/townplan2016/facilitieservices.mxd

**Created:**  
August, 2016.



**Prepared by:**  
Northwest Regional Planning Commission  
75 Fairfield Street  
St. Albans, VT 05478  
(802) 524-5958  
www.nrpcvt.com

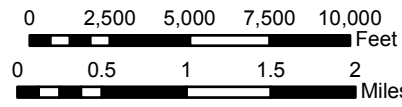
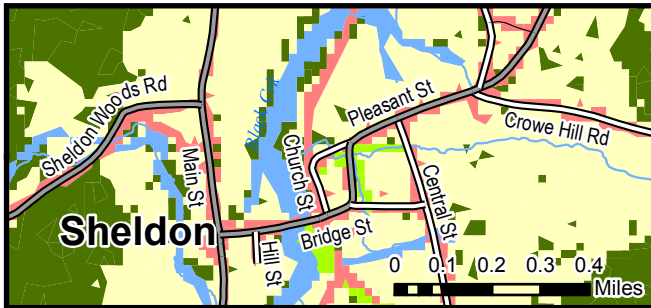
# TOWN OF SHELDON Land Use/Land Cover



**INSET 1**



**INSET 2**



## LEGEND

### Land Use/ Land Cover Features

- Built Up(residential, commercial, industrial or other urban)
- Agricultural(row crop, hay/pasture or other agricultural practice)
- Forested(deciduous, coniferous or mixed forest)
- Wetland(forested and non-forested wetlands)

### Transportation Features

- State Highway
- Class 2 Town Highway
- Class 3 Town Highway
- Class 4 Town Highway
- Private Road

### Surface Water Features

- River, Stream or Brook
- Pond or River

### Other Feature

- Town Boundary

For planning purposes only.

**Data Sources:**  
All map features derived from VGIS digital coverages. Vermont Coordinate System Transverse Mercator, NAD 83. North arrow on map refers to Grid North.

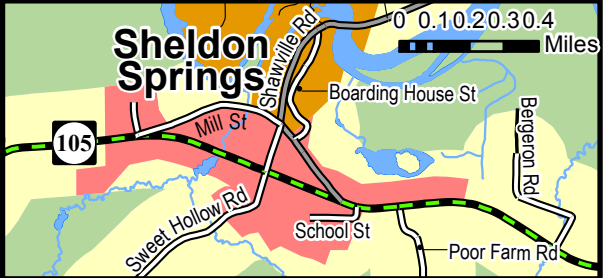
**Located:**  
z:gis/projects/county/franklin/sheldon/townplan2016/landuselandscover.mxd

**Created:**  
August, 2016.

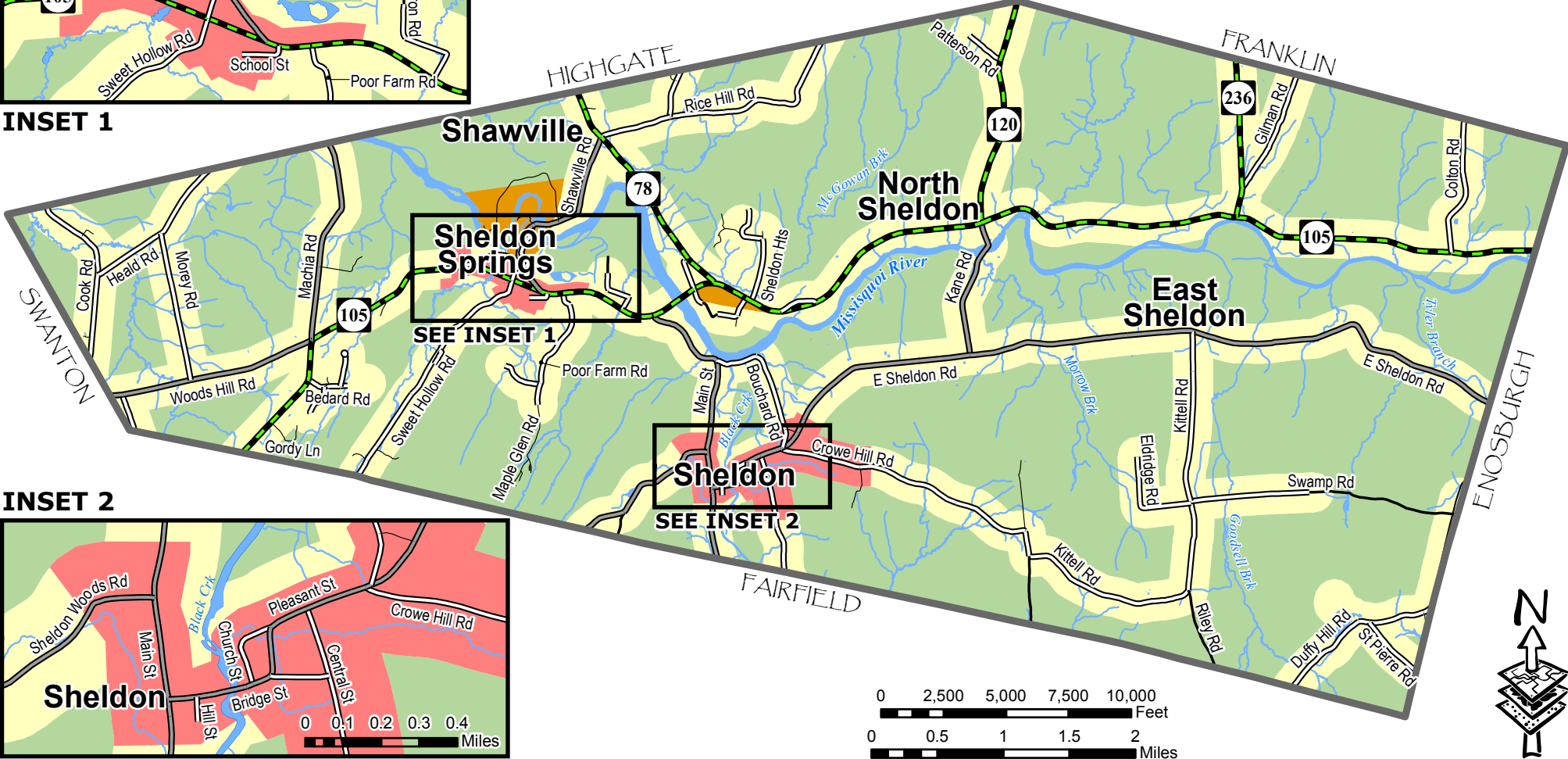


**Prepared by:**  
Northwest Regional Planning Commission  
75 Fairfield Street  
St. Albans, VT 05478  
(802) 524-5958  
www.nrpcvt.com

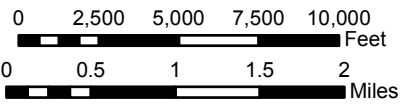
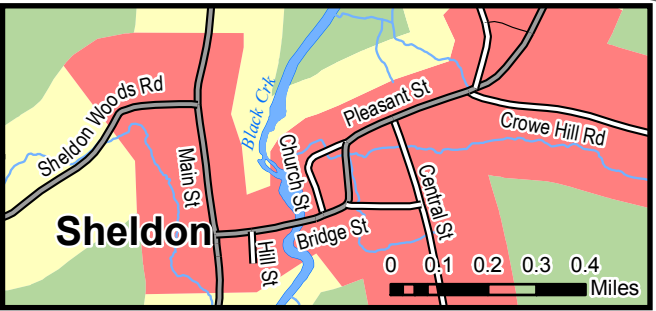
# TOWN OF SHELDON Proposed Land Use



**INSET 1**



**INSET 2**



## LEGEND

### Proposed Land Use Features

- Village District
- Commercial/Industrial District
- Rural Lands 1
- Rural Lands 2

### Transportation Features

- State Highway
- Class 2 Town Highway
- Class 3 Town Highway
- Class 4 Town Highway
- Private Road

### Surface Water Features

- River, Stream or Brook
- Pond or River

### Other Feature

- Town Boundary

For planning purposes only.

**Data Sources:**  
All map features derived from VGIS digital coverages. Vermont Coordinate System Transverse Mercator, NAD 83. North arrow on map refers to Grid North.

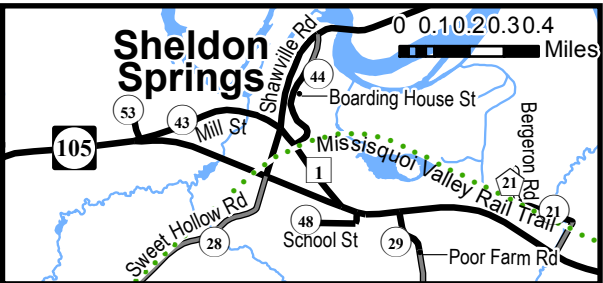
**Located:**  
z:gis/projects/county/franklin/sheldon/townplan2016/proposedlanduse.mxd

**Created:**  
August, 2016.

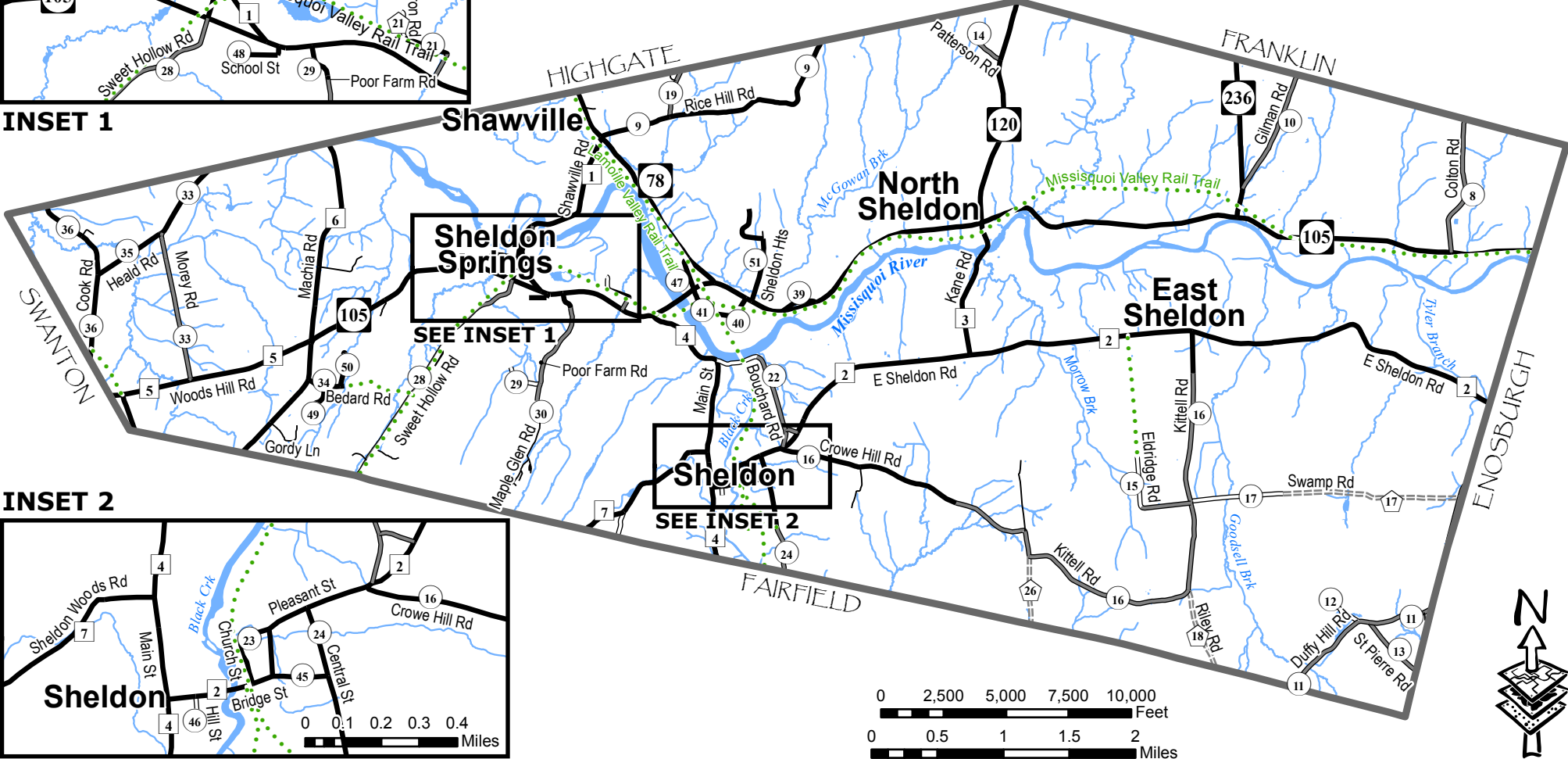


**Prepared by:**  
Northwest Regional Planning Commission  
75 Fairfield Street  
St. Albans, VT 05478  
(802) 524-5958  
www.nrpcvt.com

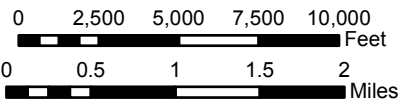
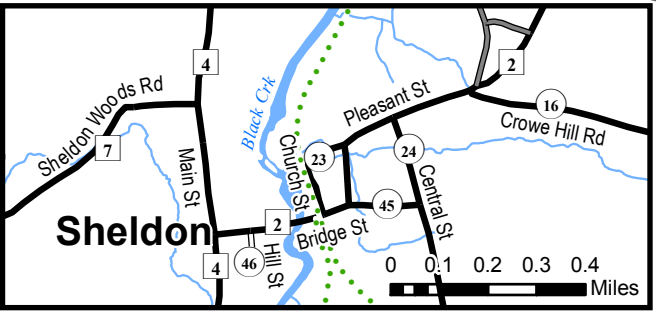
# TOWN OF SHELDON Transportation System



**INSET 1**



**INSET 2**




LEGEND		
<b>Road Surface Features</b>	<b>Road Class Features</b>	<b>Surface Water Features</b>
Surfaced	State Route	River, Stream or Brook
Gravel	Class 2 Town Highway	Pond or River
Soil or Graded & Drained Earth	Class 3 Town Highway	
Impassable or Untraveled	Class 4 Town Highway	<b>Other Feature</b>
Unknown Surface Type	Legal Trail	Town Boundary

**For planning purposes only.**

**Data Sources:**  
All map features derived from VGIS digital coverages. Vermont Coordinate System Transverse Mercator, NAD 83. North arrow on map refers to Grid North.

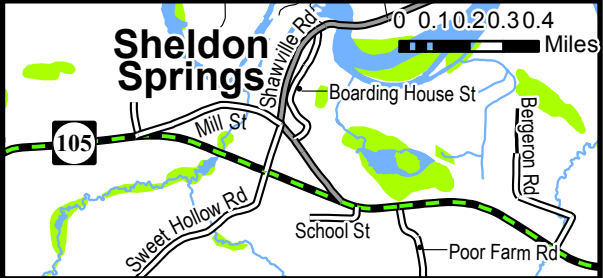
**Located:**  
z:gis/projects/county/franklin/sheldon/townplan2016/transportation.mxd

**Created:**  
August, 2016.

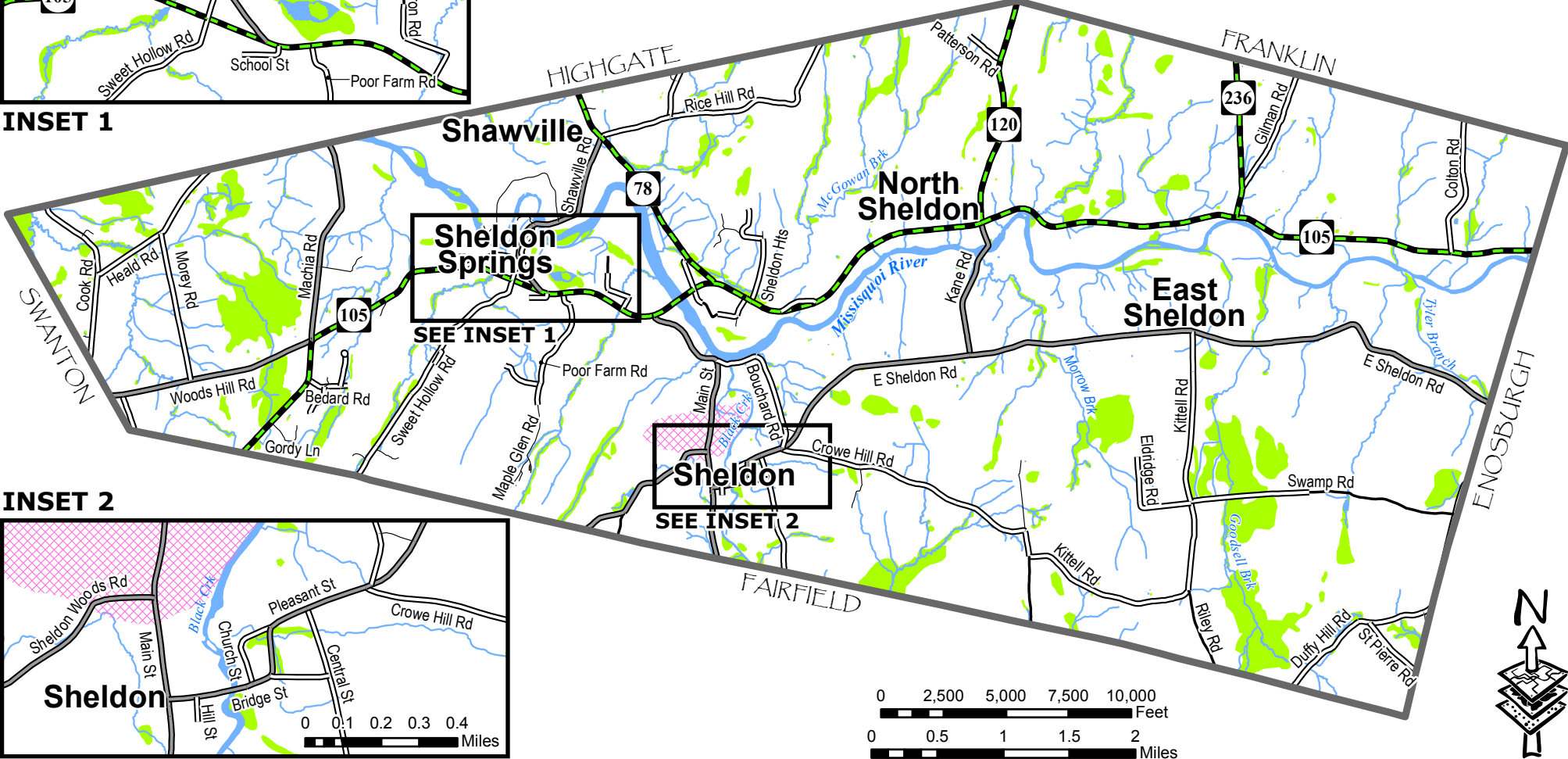


**Prepared by:**  
Northwest Regional Planning Commission  
75 Fairfield Street  
St. Albans, VT 05478  
(802) 524-5958  
www.nrpcvt.com

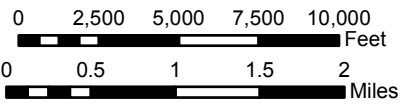
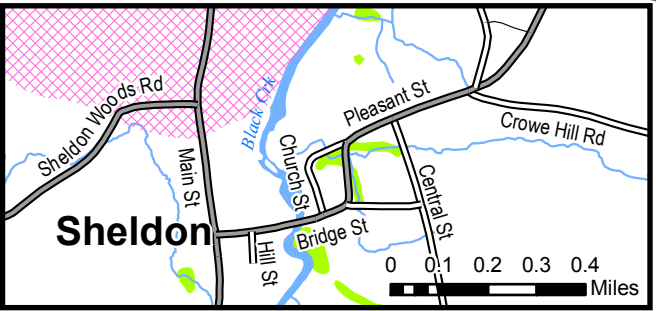
# TOWN OF SHELDON Water Resources 1



**INSET 1**



**INSET 2**



## LEGEND

### Surface Water Features

- River, Stream or Brook
- Pond or River
- Wetland
- Ground Water - Surface Protection Area

### Other Feature

- Town Boundary

### Transportation Features

- State Highway
- Class 2 Town Highway
- Class 3 Town Highway
- Class 4 Town Highway
- Private Road

For planning purposes only.

#### Data Sources:

All map features derived from VGIS digital coverages. Vermont Coordinate System Transverse Mercator, NAD 83. North arrow on map refers to Grid North.

#### Located:

z:gis/projects/county/franklin/sheldon/townplan2016/waterresources1.mxd

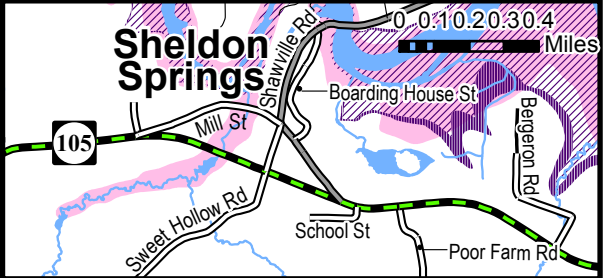
#### Created:

August, 2016.

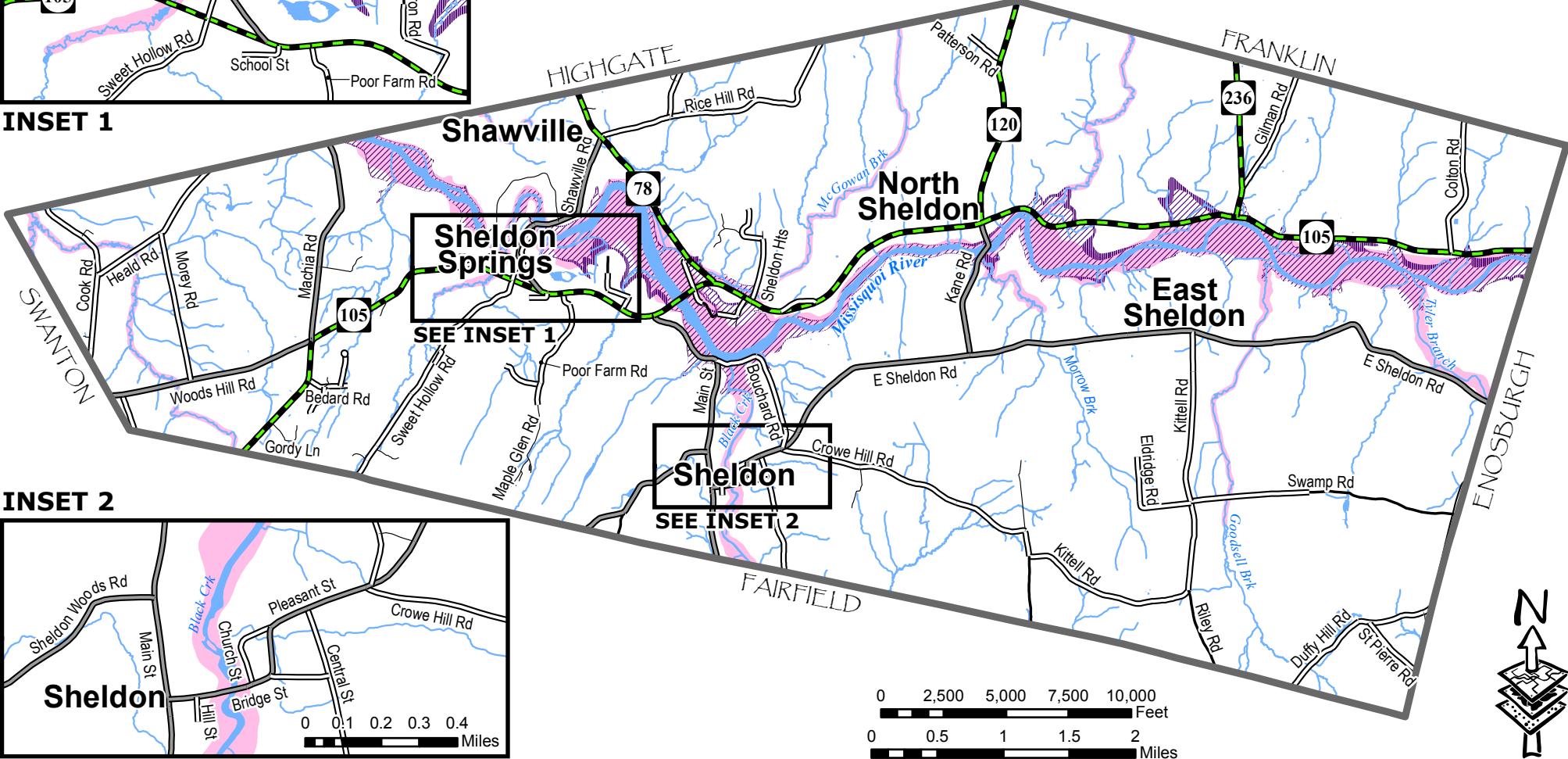


**Prepared by:**  
Northwest Regional Planning Commission  
75 Fairfield Street  
St. Albans, VT 05478  
(802) 524-5958  
www.nrpcvt.com

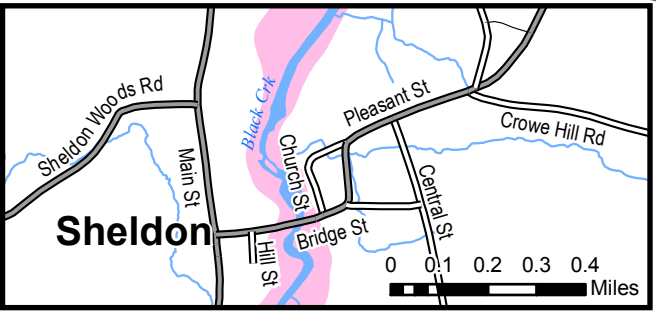
# TOWN OF SHELDON Water Resources 2



**INSET 1**



**INSET 2**



## LEGEND

### Surface Water Features

- River, Stream or Brook
- Pond or River
- River Corridor
- 100 Year Flood Zone
- 500 Year Flood Zone

### Other Feature

- Town Boundary

### Transportation Features

- State Highway
- Class 2 Town Highway
- Class 3 Town Highway
- Class 4 Town Highway
- Private Road

For planning purposes only.

#### Data Sources:

All map features derived from VGIS digital coverages. Vermont Coordinate System Transverse Mercator, NAD 83. North arrow on map refers to Grid North.

#### Located:

z:gis/projects/county/franklin/sheldon/townplan2016/waterresources2.mxd

#### Created:

August, 2016.



**Prepared by:**  
Northwest Regional  
Planning Commission  
75 Fairfield Street  
St. Albans, VT 05478  
(802) 524-5958  
www.nrpcvt.com

