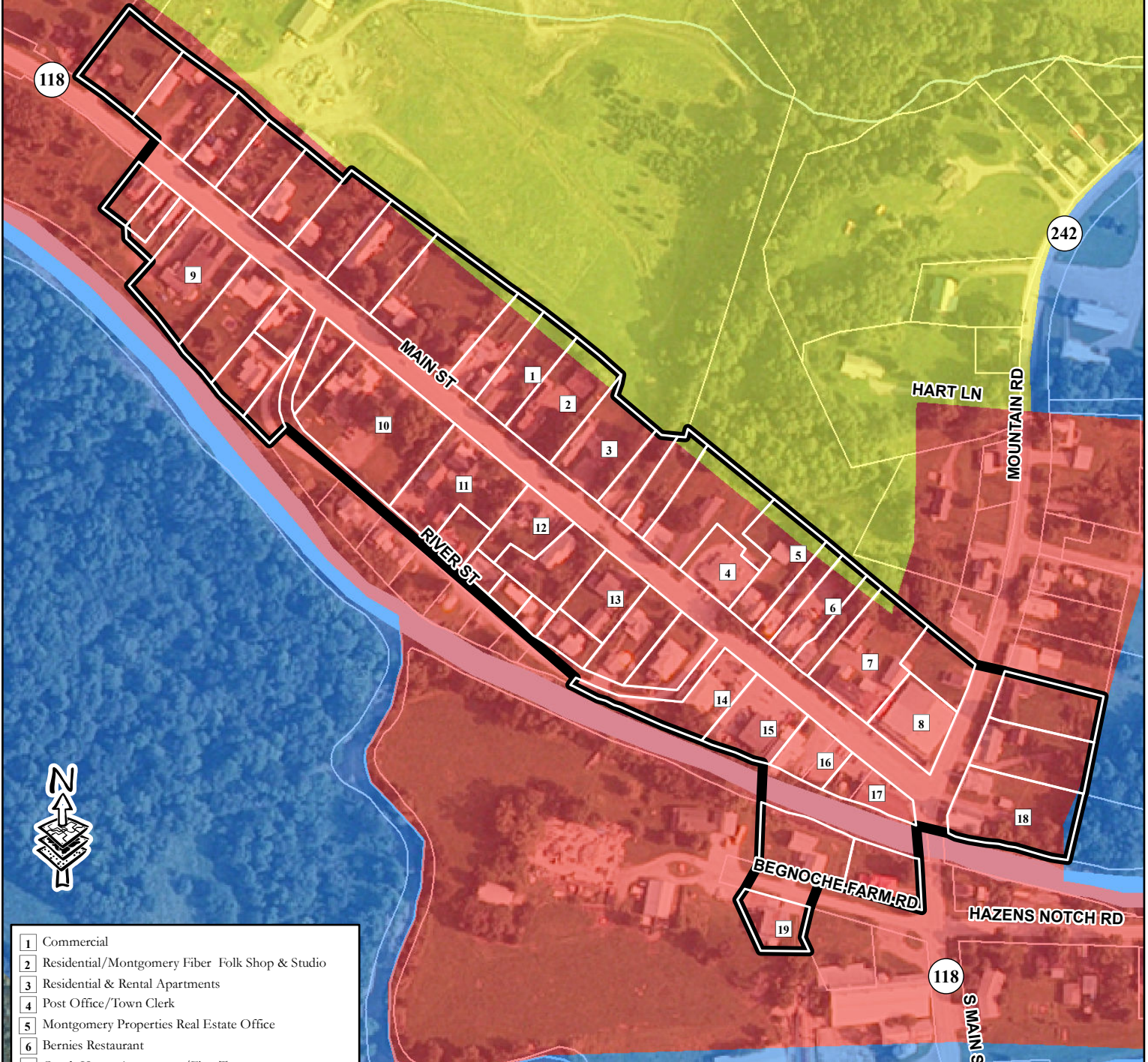


MONTGOMERY VILLAGE

Zoning/Village Center Designation

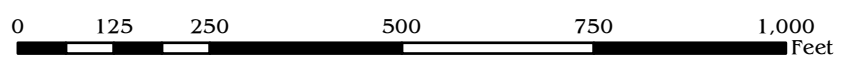


- 1 Commercial
- 2 Residential/Montgomery Fiber Folk Shop & Studio
- 3 Residential & Rental Apartments
- 4 Post Office/Town Clerk
- 5 Montgomery Properties Real Estate Office
- 6 Bernies Restaurant
- 7 Coach House Apartments/First Trax
- 8 Sylvester's Market
- 9 The Happenin'
- 10 Inn on Trout River
- 11 Phineas Swann
- 12 Rental Apartments
- 13 Residential/Main Street Cuts
- 14 Trout River Traders & Rental Apartment
- 15 Lutz's Automotive
- 16 Montgomery Town Hall
- 17 Snow Shoe Lodge & Pub
- 18 Community Baptist Church
- 19 Gramp Grunts Lodge

Village Designation Boundary

Zoning Districts

- Village 1
- Rural/Residential
- Village 2



Vermont Coordinate System
 Transverse Mercator, NAD 83.
 For planning purposes only.

Prepared by:
 Northwest RPC
 75 Fairfield Street
 St. Albans, VT 05478
 802.524.5958
 www.nrpcvt.com
 September, 2016.

REGIONAL PLANNING COMMISSION
 z:/gis/projects/county/franklin/montgomery/villagedesignation