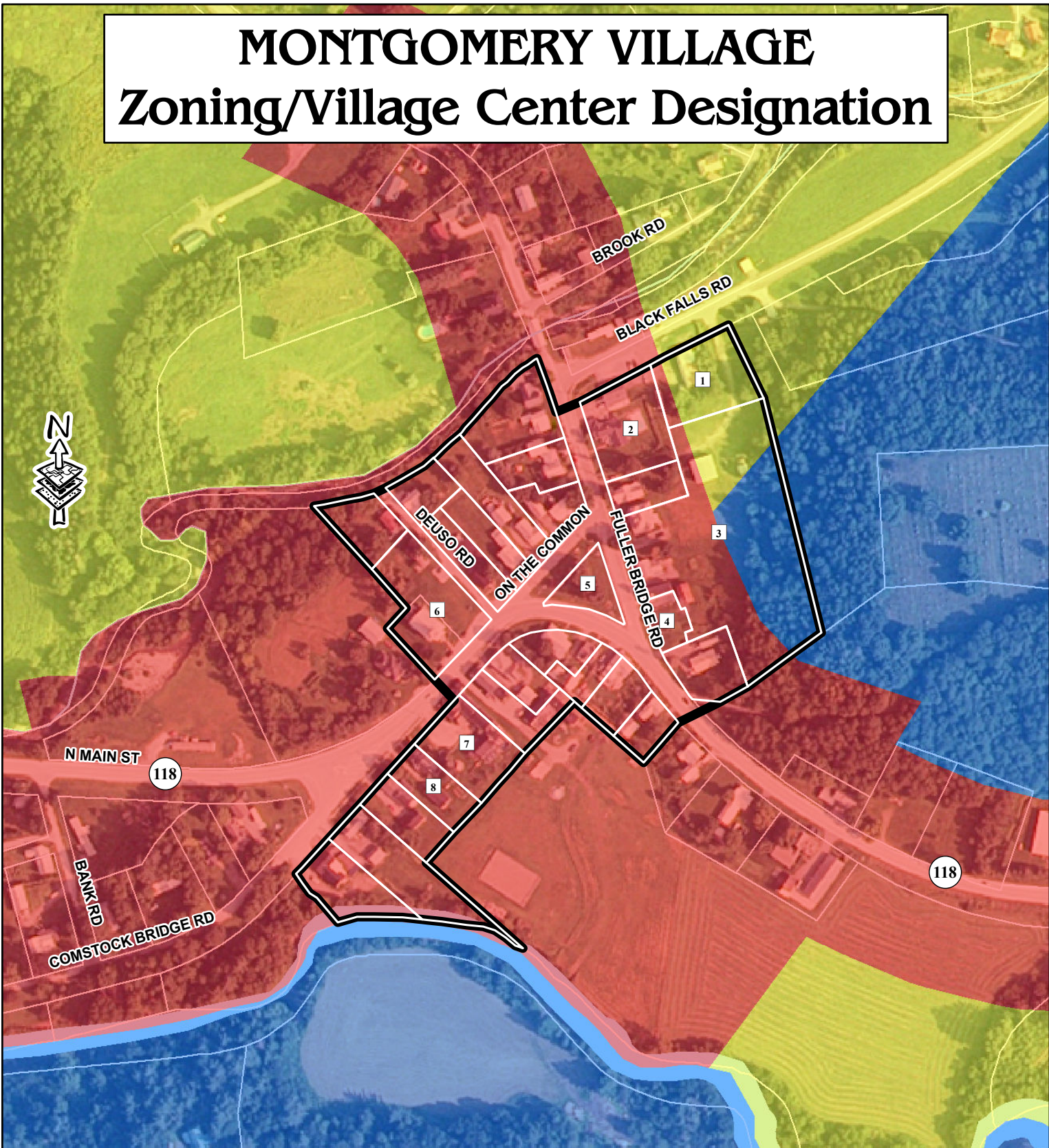



# MONTGOMERY VILLAGE


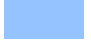

## Zoning/Village Center Designation

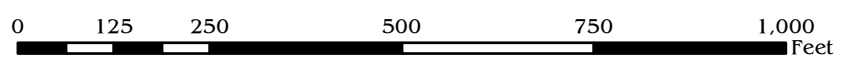


- 1 St. Onge Storage Garage
- 2 Post Office/Residential
- 3 Schley House - Residential/also includes Red Barn Studio
- 4 United Methodist Church
- 5 Village Green
- 6 Pratt Hall - Montgomery Historical Society
- 7 Commercial
- 8 Commercial

 Village Designation Boundary

**Zoning Districts**

-  Village 1
-  Rural/Residential
-  Village 2



Vermont Coordinate System  
 Transverse Mercator, NAD 83.  
 For planning purposes only.

Prepared by:  
 Northwest RPC  
 75 Fairfield Street  
 St. Albans, VT 05478  
 802.524.5958  
 www.nrpcvt.com  
 October, 2016.

 REGIONAL PLANNING COMMISSION

z:/gis/projects/county/franklin/montgomery/villagedesignation