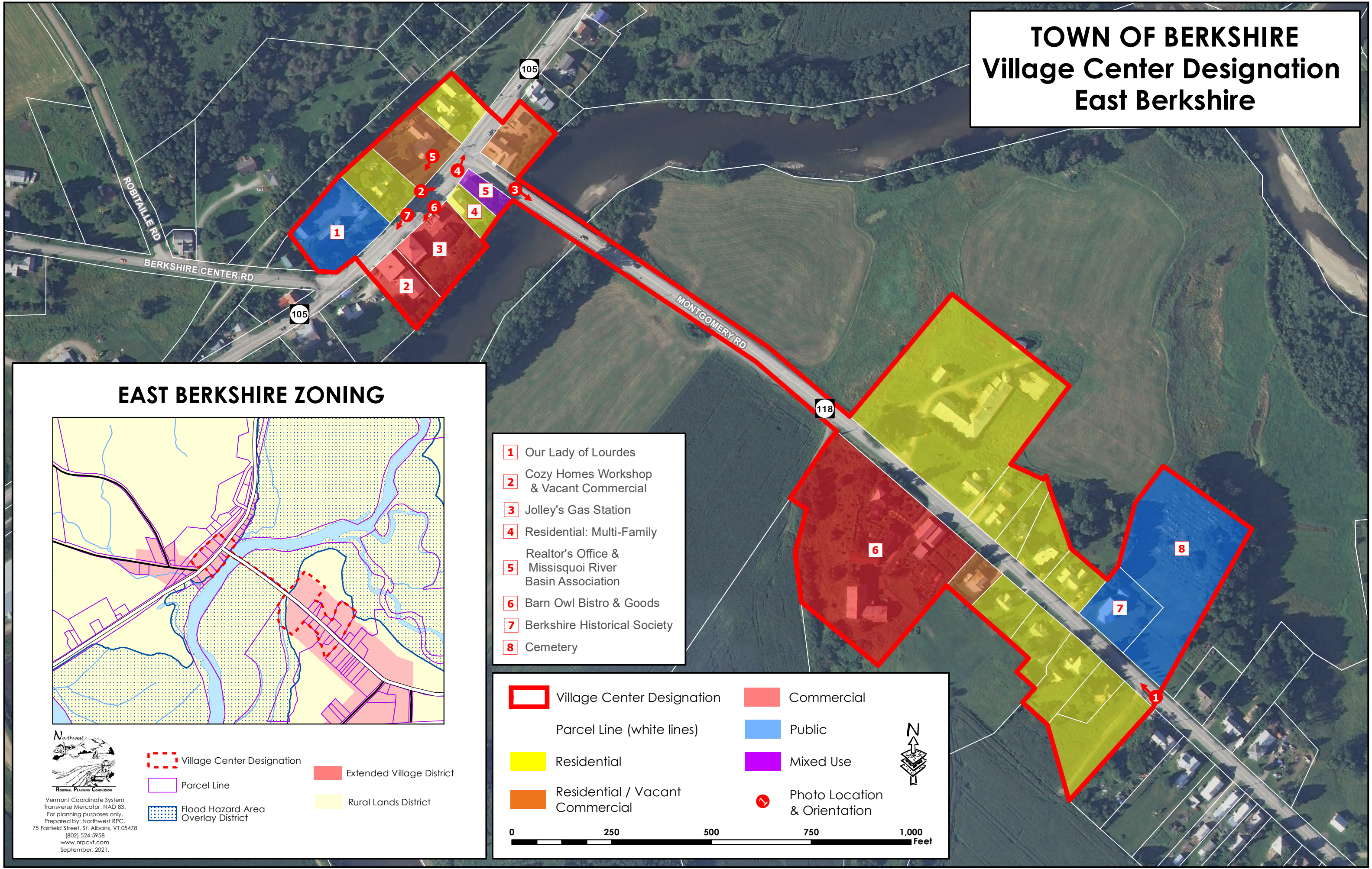


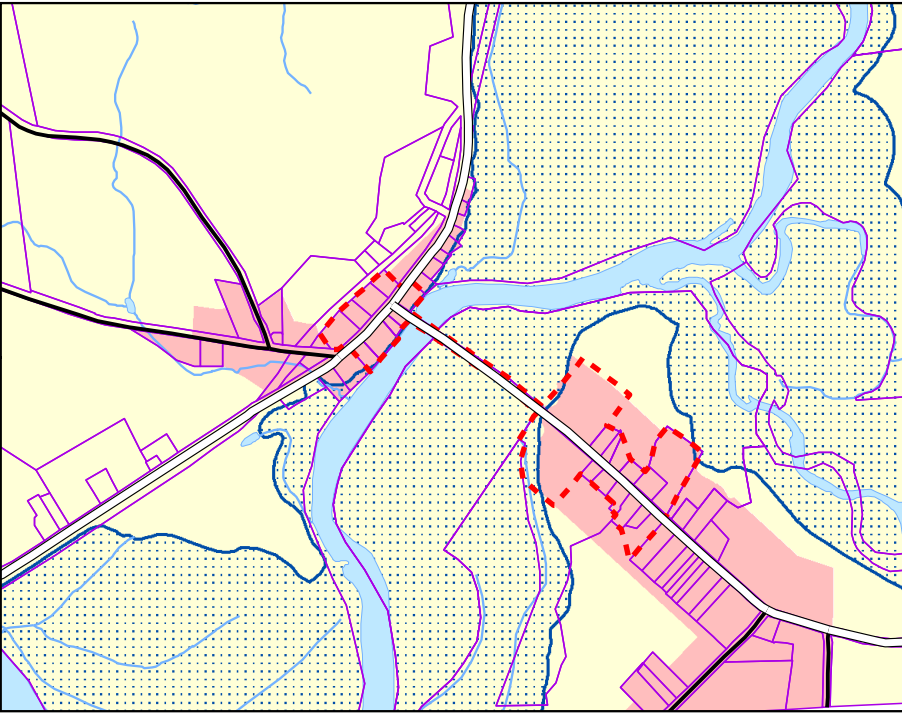
TOWN OF BERKSHIRE

Village Center Designation

East Berkshire



EAST BERKSHIRE ZONING



- 1 Our Lady of Lourdes
- 2 Cozy Homes Workshop & Vacant Commercial
- 3 Jolley's Gas Station
- 4 Residential: Multi-Family
- 5 Realtor's Office & Missisquoi River Basin Association
- 6 Barn Owl Bistro & Goods
- 7 Berkshire Historical Society
- 8 Cemetery

Village Center Designation	Commercial
Parcel Line (white lines)	Public
Residential	Mixed Use
Residential / Vacant Commercial	Photo Location & Orientation

0 250 500 750 1,000 Feet