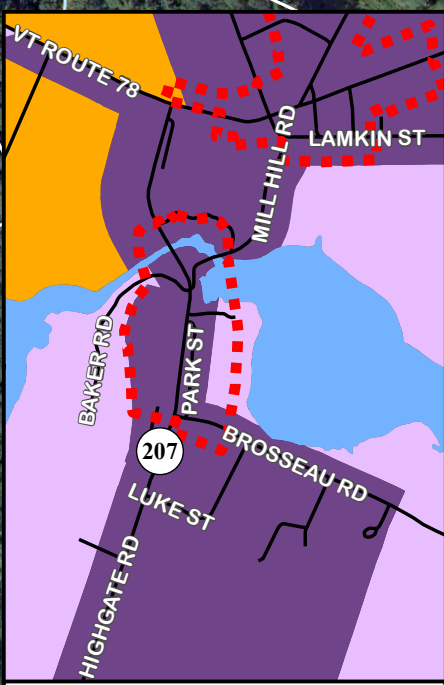


TOWN OF HIGHGATE

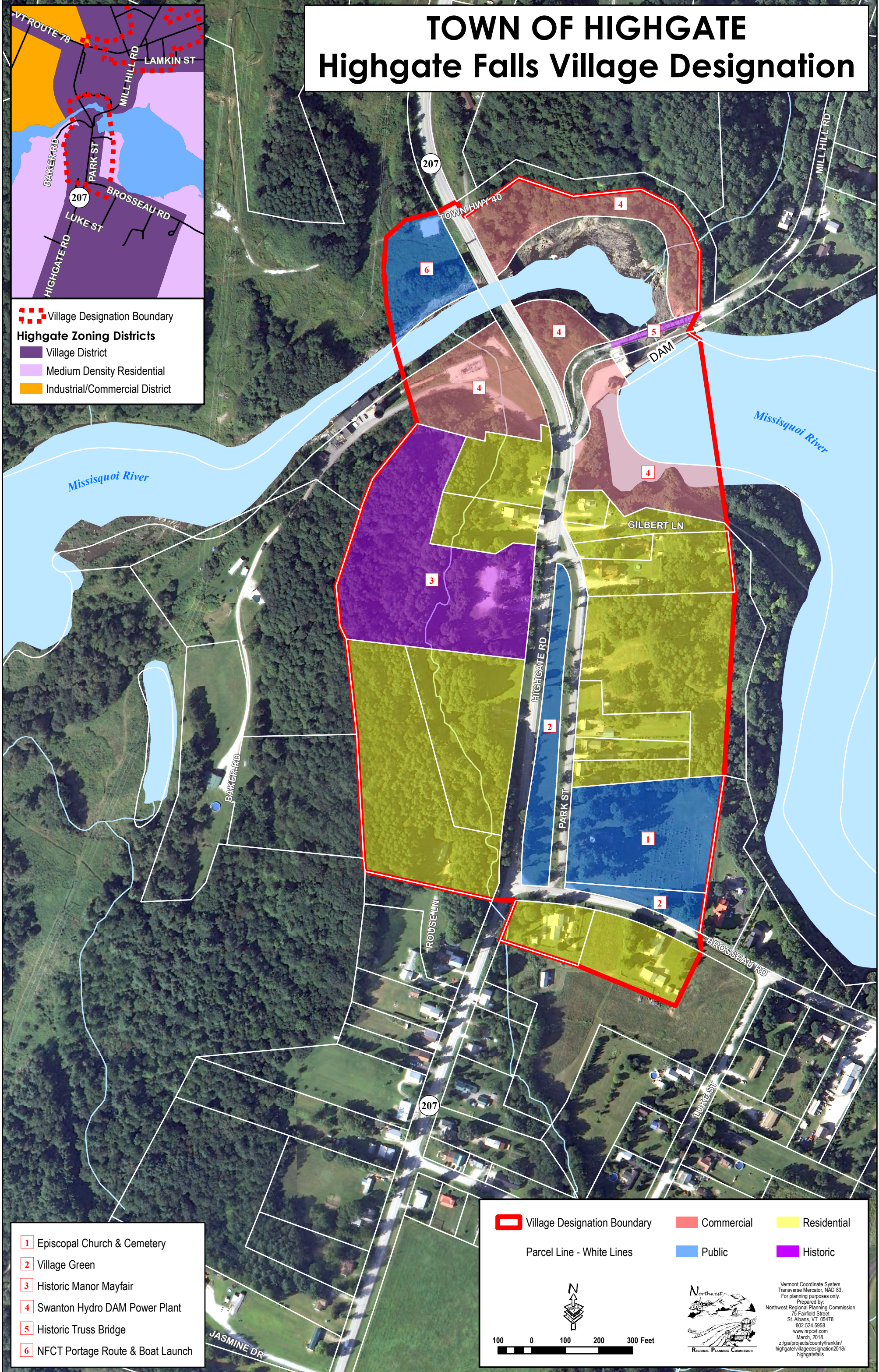
Highgate Falls Village Designation



Village Designation Boundary

Highgate Zoning Districts

- Village District
- Medium Density Residential
- Industrial/Commercial District



- 1 Episcopal Church & Cemetery
- 2 Village Green
- 3 Historic Manor Mayfair
- 4 Swanton Hydro DAM Power Plant
- 5 Historic Truss Bridge
- 6 NFCT Portage Route & Boat Launch

- Village Designation Boundary
- Commercial
- Residential
- Parcel Line - White Lines
- Public
- Historic

100 0 100 200 300 Feet

Northwest
REGIONAL PLANNING COMMISSION

Vermont Coordinate System
Transverse Mercator, NAD 83.
For planning purposes only.
Prepared by:
Northwest Regional Planning Commission
75 Fairfield Street
St. Albans, VT 05478
802.524.5958
www.nrpvt.com
March, 2018.
z:\gis\projects\county\franklin\highgate\highgate-village-designation2018\highgatefalls