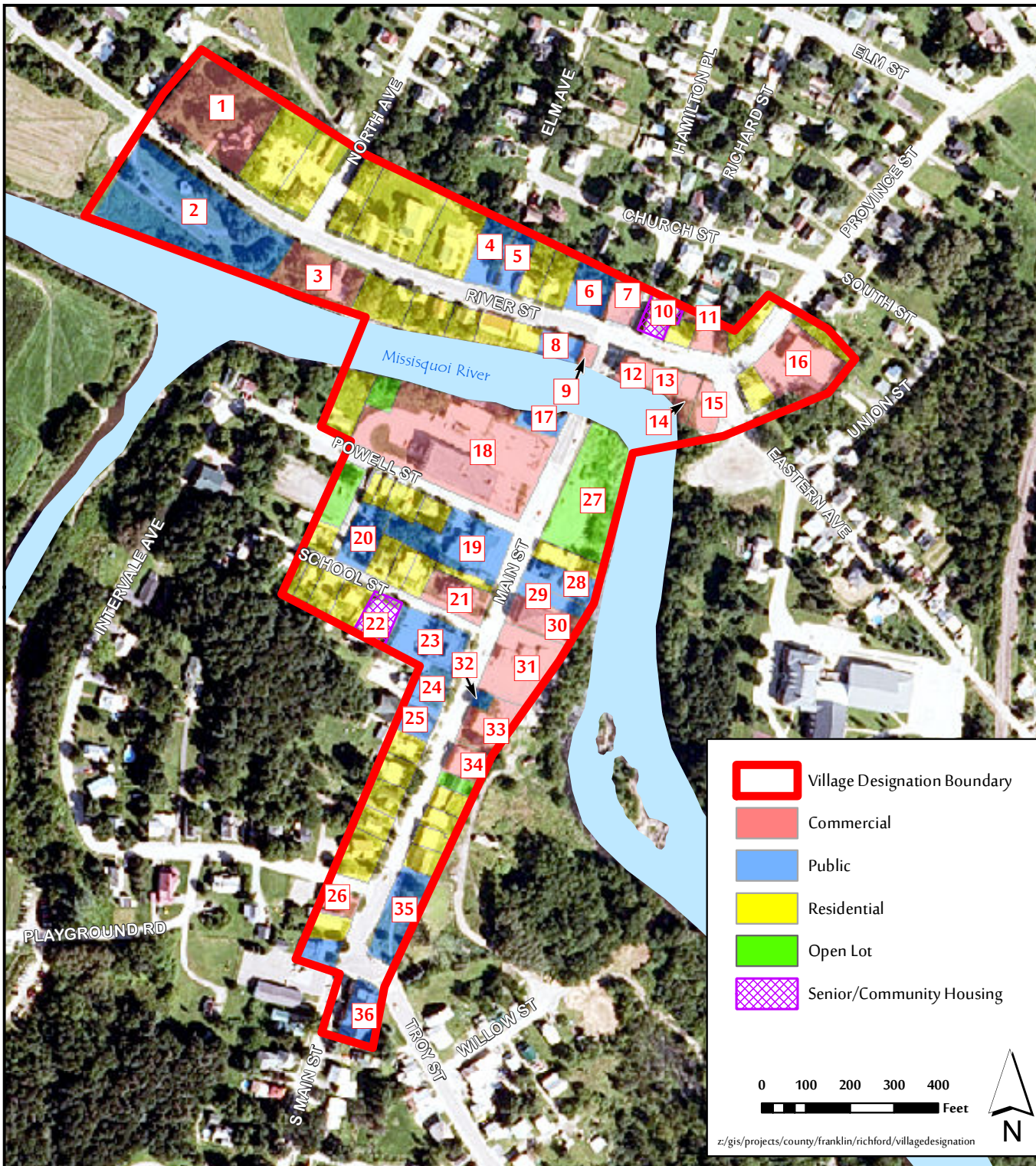


# RICHFORD Village Center Designation



- |  |  |
|--|--|
| <b>1</b> Grey Gables Mansion B&B               | <b>19</b> Emergency Service Building     |
| <b>2</b> Davis Park                            | <b>20</b> First Baptist Church           |
| <b>3</b> Lariviere House                       | <b>21</b> The Pink Lady                  |
| <b>4</b> Methodist Parsonage                   | <b>22</b> Ave Maria Community Care Home  |
| <b>5</b> United Methodist Church               | <b>23</b> Post Office                    |
| <b>6</b> Municipal Parking Lot                 | <b>24</b> A.A. Brown Public Library      |
| <b>7</b> Wheeler Block - Vacant Commercial     | <b>25</b> Town Hall                      |
| <b>8</b> American Legion                       | <b>26</b> Spears Funeral Home            |
| <b>9</b> Vacant Commercial                     | <b>27</b> Vacant Lot                     |
| <b>10</b> Richford Community Housing           | <b>28</b> NOTCH Offices                  |
| <b>11</b> Vacant Commercial                    | <b>29</b> NOTCH Parking Lot              |
| <b>12</b> Boright Block - 2nd Hand Store       | <b>30</b> Bank Block - Vacant Commercial |
| <b>13</b> Vacant Commercial                    | <b>31</b> Wetherby's Quick Stop          |
| <b>14</b> Pub/Restaurant                       | <b>32</b> War Memorial                   |
| <b>15</b> Mayhew's Corner Store                | <b>33</b> TD Bank                        |
| <b>16</b> The Crossing Restaurant              | <b>34</b> Greenwood Deli & Bakery        |
| <b>17</b> Old Fire Station/ Historical Society | <b>35</b> Memorial Park                  |
| <b>18</b> Main Street Mill                     | <b>36</b> All Saints Catholic Church     |

z:/gis/projects/county/franklin/richford/villagedesignation



Vermont Coordinate System  
 Transverse Mercator, NAD 83.  
 For planning purposes only.  
 Prepared by:  
 NRPC  
 75 Fairfield Street  
 St. Albans, VT 05478  
 802-524-5958  
 www.nrpvt.com  
 September, 2015.