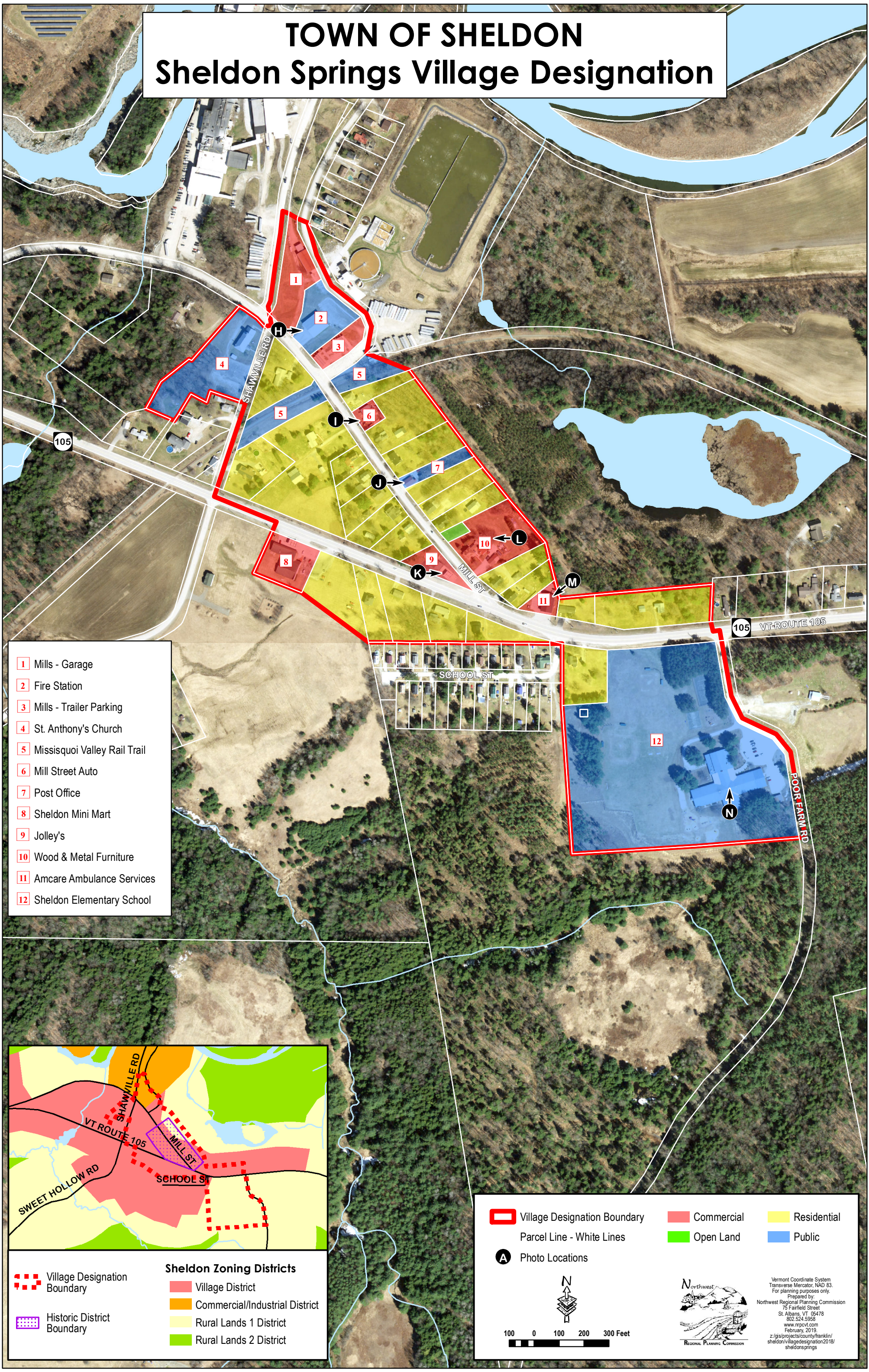
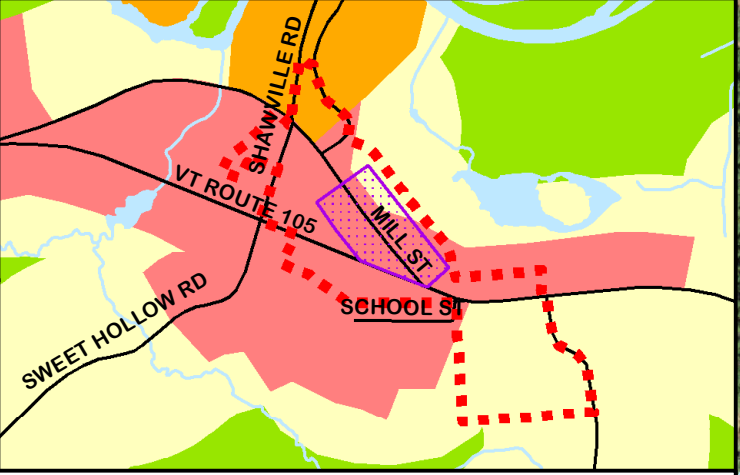


TOWN OF SHELDON Sheldon Springs Village Designation




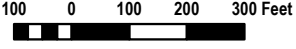
- 1 Mills - Garage
- 2 Fire Station
- 3 Mills - Trailer Parking
- 4 St. Anthony's Church
- 5 Missisquoi Valley Rail Trail
- 6 Mill Street Auto
- 7 Post Office
- 8 Sheldon Mini Mart
- 9 Jolley's
- 10 Wood & Metal Furniture
- 11 Amcare Ambulance Services
- 12 Sheldon Elementary School

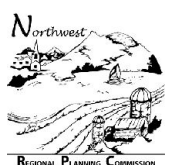


- Sheldon Zoning Districts**
- Village Designation Boundary
 - Historic District Boundary
 - Village District
 - Commercial/Industrial District
 - Rural Lands 1 District
 - Rural Lands 2 District

 Village Designation Boundary	 Commercial	 Residential
 Parcel Line - White Lines	 Open Land	 Public
A Photo Locations		







Vermont Coordinate System
 Transverse Mercator, NAD 83.
 For planning purposes only.
 Prepared by:
 Northwest Regional Planning Commission
 75 Fairfield Street
 St. Albans, VT 05478
 802.244.6958
 www.nrpcvt.com
 February, 2019.
[z:/gis/projects/county/franklin/sheldon/village-designation2018/sheldonsprings](https://gis/projects/county/franklin/sheldon/village-designation2018/sheldonsprings)