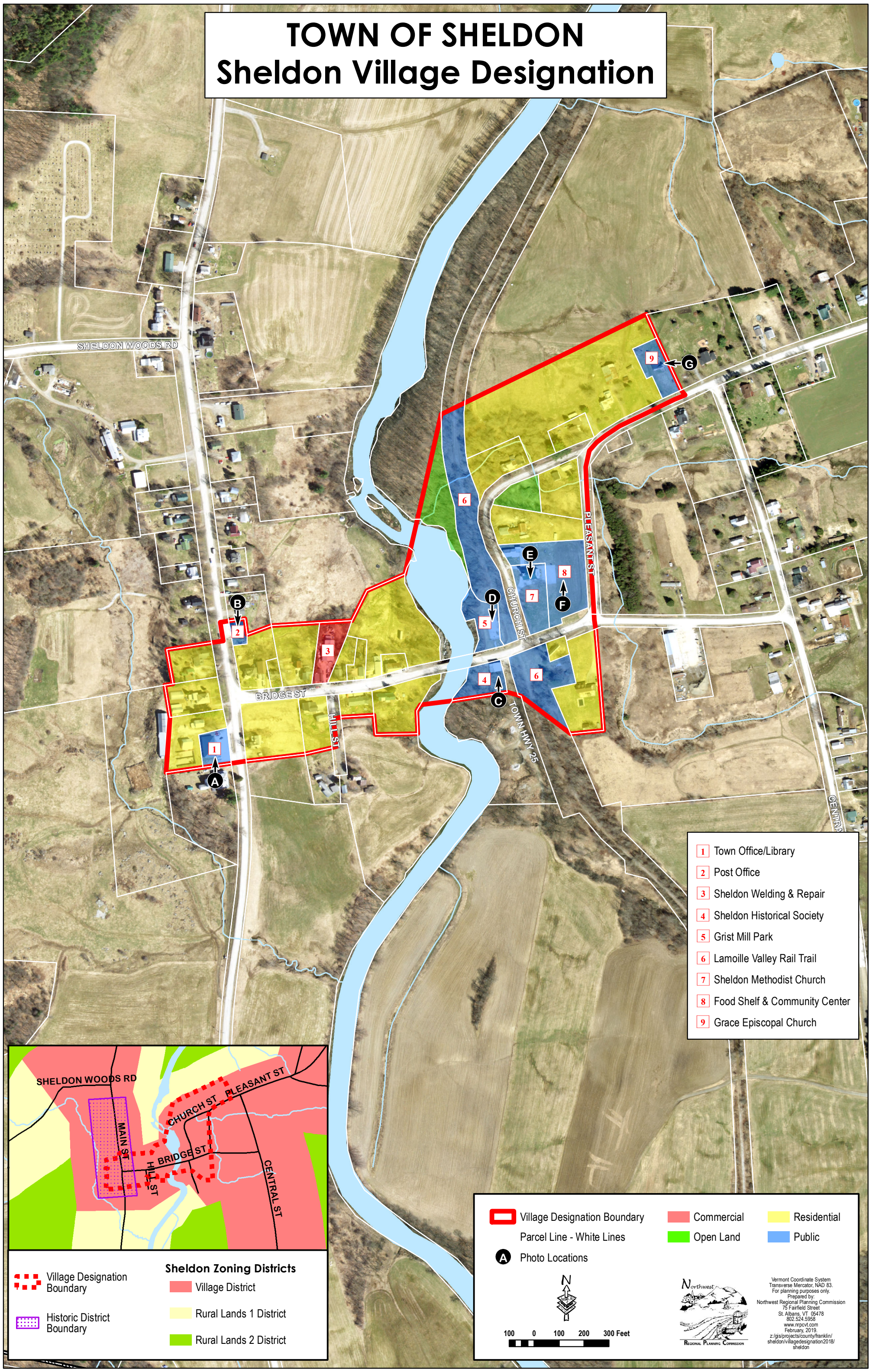
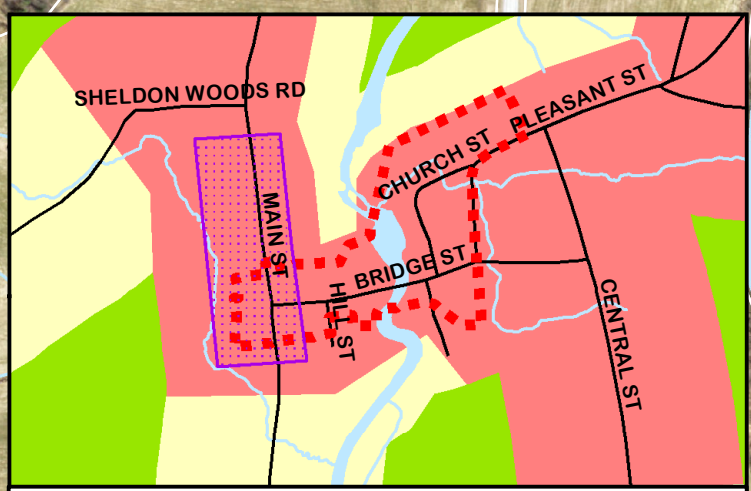


# TOWN OF SHELDON

## Sheldon Village Designation



- 1 Town Office/Library
- 2 Post Office
- 3 Sheldon Welding & Repair
- 4 Sheldon Historical Society
- 5 Grist Mill Park
- 6 Lamoille Valley Rail Trail
- 7 Sheldon Methodist Church
- 8 Food Shelf & Community Center
- 9 Grace Episcopal Church



- Sheldon Zoning Districts**
- Village Designation Boundary
  - Historic District Boundary
  - Village District
  - Rural Lands 1 District
  - Rural Lands 2 District

- Village Designation Boundary
- Parcel Line - White Lines
- Photo Locations
- Commercial
- Open Land
- Residential
- Public

100 0 100 200 300 Feet

Northwest Regional Planning Commission  
 Vermont Coordinate System  
 Transverse Mercator, NAD 83.  
 For planning purposes only.  
 Prepared by:  
 Northwest Regional Planning Commission  
 75 Fairfield Street  
 St. Albans, VT 05478  
 802.524.6968  
 www.nrpcvt.com  
 February, 2019  
 z:/gis/projects/county/franklin/sheldon/villagedesignation2018/sheldon