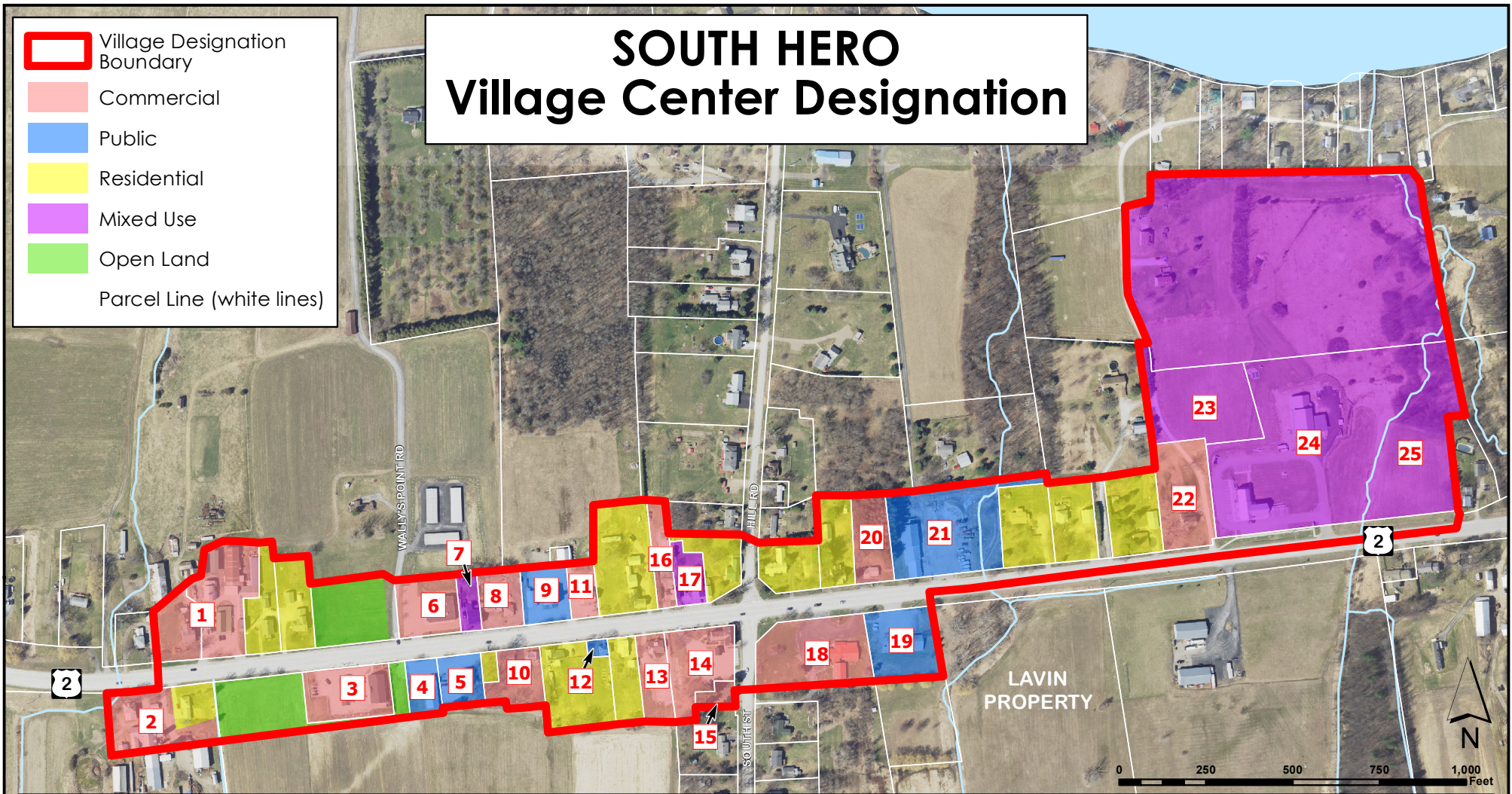


SOUTH HERO Village Center Designation

-  Village Designation Boundary
-  Commercial
-  Public
-  Residential
-  Mixed Use
-  Open Land
- Parcel Line (white lines)



- | | | |
|--|--|--|
| 1 Robinson's Hardware & Lumber | 9 South Hero Meeting House-Granny's Attic | 17 Apple Island Construction & Real Estate and apartments |
| 2 Robinson Farm Stand | 10 Island Physical Therapy | 18 Viva Marketplace & Seb's Snack Bar |
| 3 Jolley Mobil | 11 Blue Paddle Bistro | 19 U.S. Postal Service 05486 |
| 4 South Hero Town Office | 12 South Hero Bicentennial Museum | 20 Clever Designs Antiques |
| 5 Island Craft Shop | 13 Kinney Insurance | 21 Town Highway Department |
| 6 Nadia's Health & Wellness | 14 Community Bank | 22 Turn To Joy Daycare |
| 7 Cedar Ledge Design & Build, Law Office-Matthew C. Little PLLC, Pan's Pizza and apartments | 15 Champlain Candy Lab | 23 Bayview Crossing-Senior Housing |
| 8 Arbor Farm Market | 16 Victoria's Cafe, Alpine Web Media | |

- 24** Bauer Gravel & Farnham Law Offices, Champlain Islands Community Health Center, Caldwell Banker Real Estate, C.I.D.E.R., Hayward Design & Build, Let's Pretend Catering, South Hero Fire & Rescue, South Hero Land Trust, Wally's Place, Wally's By Night/Cook Sisters, Worthen Library
- 25** Two Heroes Public House & Brewery

Vermont Coordinate System
Transverse Mercator, NAD 83.
For planning purposes only.
Prepared by:
NRPC
75 Fairfield Street
St. Albans, VT 05478
802-524-5958
www.nrpcvt.com
February, 2022

 REGIONAL PLANNING COMMISSION

z:/gis/projects/county/grandisle/southhero/village/designation