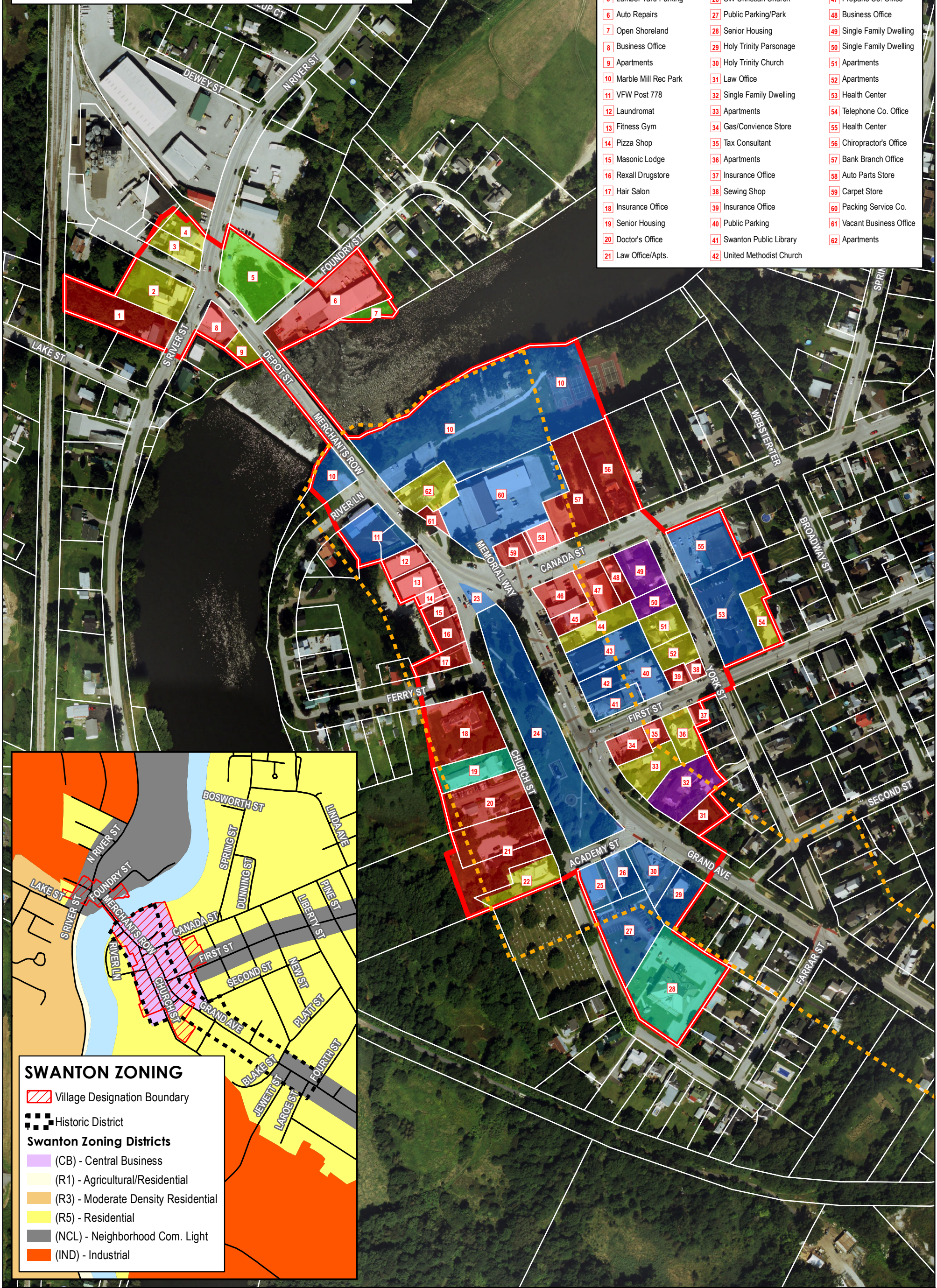


# SWANTON Village Center Designation

- |                         |                            |                           |
|-------------------------|----------------------------|---------------------------|
| 1 Vacant Apartments     | 22 Apartments              | 43 U.S. Post Office       |
| 2 Apartments            | 23 Public Parking          | 44 Apartments             |
| 3 Apartments            | 24 SW Village Park         | 45 Restaurant             |
| 4 Apartments            | 25 Town Office Building    | 46 Gas/Convenience Store  |
| 5 Lumber Yard Parking   | 26 SW Christian Church     | 47 Propane Co. Office     |
| 6 Auto Repairs          | 27 Public Parking/Park     | 48 Business Office        |
| 7 Open Shoreland        | 28 Senior Housing          | 49 Single Family Dwelling |
| 8 Business Office       | 29 Holy Trinity Parsonage  | 50 Single Family Dwelling |
| 9 Apartments            | 30 Holy Trinity Church     | 51 Apartments             |
| 10 Marble Mill Rec Park | 31 Law Office              | 52 Apartments             |
| 11 VFW Post 778         | 32 Single Family Dwelling  | 53 Health Center          |
| 12 Laundromat           | 33 Apartments              | 54 Telephone Co. Office   |
| 13 Fitness Gym          | 34 Gas/Convenience Store   | 55 Health Center          |
| 14 Pizza Shop           | 35 Tax Consultant          | 56 Chiropractor's Office  |
| 15 Masonic Lodge        | 36 Apartments              | 57 Bank Branch Office     |
| 16 Rexall Drugstore     | 37 Insurance Office        | 58 Auto Parts Store       |
| 17 Hair Salon           | 38 Sewing Shop             | 59 Carpet Store           |
| 18 Insurance Office     | 39 Insurance Office        | 60 Packing Service Co.    |
| 19 Senior Housing       | 40 Public Parking          | 61 Vacant Business Office |
| 20 Doctor's Office      | 41 Swanton Public Library  | 62 Apartments             |
| 21 Law Office/Apts.     | 42 United Methodist Church |                           |



**SWANTON ZONING**

- Village Designation Boundary
- Historic District
- Swanton Zoning Districts**
  - (CB) - Central Business
  - (R1) - Agricultural/Residential
  - (R3) - Moderate Density Residential
  - (R5) - Residential
  - (NCL) - Neighborhood Com. Light
  - (IND) - Industrial

- Village Designation Boundary
- Historic District
- Commercial
- Public/Institutional
- Apartments
- Senior Housing
- Undeveloped/Open
- Single Family Dwelling

