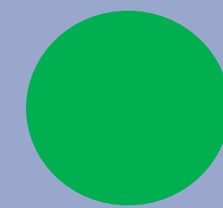


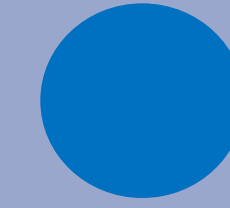
PROPOSED TOWN PLAN VISION

2025-2033

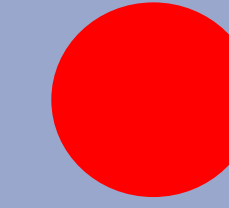
Use dots to give us your reaction!



That's it!



Something's missing!

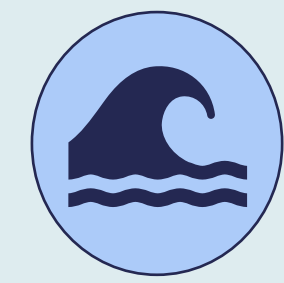


You've got it wrong!



TOWN CENTER, RECREATION & ISLAND LIFE

- a) Small community with unique sense of identity centered around working landscape, sweeping views and a connection to Lake Champlain.
- b) Welcoming, engaged, inclusive, and resilient community where year-round and seasonal residents share and benefit from an outstanding quality of life.
- c) Central places to gather, recreation programs and amenities, access to Lake Champlain and community-oriented events support a strong sense of community.



NATURAL BEAUTY, LAKE CHAMPLAIN AND AGRICULTURAL HERITAGE

- a) Rural, natural landscape of agriculture, forestlands, wetlands and shoreland.
- b) Beautiful views and scenery of rolling countryside, Lake Champlain, sunsets over the Adirondack Mountains to the west and sunrises over the Green Mountains to the east.
- c) Diverse agricultural practices define the working landscape and are important to the local economy.
- d) There are opportunities for everyone to access and enjoy the natural landscape and shoreline that fosters Grand Isle's unique sense of identity.
- e) Native forests and wildlife habitat areas contribute to ecological diversity; invasives and harmful pests are kept at bay.



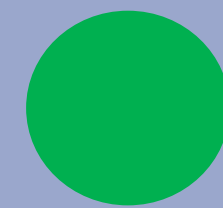
DAILY LIVING FOR SEASONAL AND YEAR-ROUND RESIDENTS

- a) A beautiful, quiet community to call home, second home or seasonally visit.
- b) Housing options for all ages and income levels. Single unit homes, duplexes, mobile homes and accessory dwellings provide options throughout the town. Multi-unit dwellings and smaller lot sizes provide additional options in the village and planned residential developments.
- c) High-quality k-6 elementary school and access to high quality higher educational and vocational training opportunities for all.
- d) Businesses and small-scale economic growth concentrated in the village and areas planned for commercial and light industrial uses.
- e) Home businesses flourish with good internet and cell service.

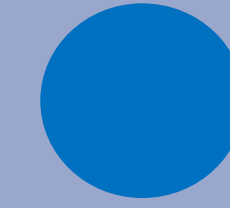
PROPOSED TOWN PLAN VISION

2025-2033

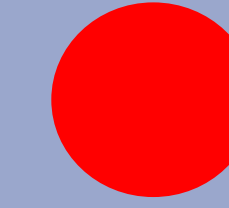
Use dots to give us your reaction!



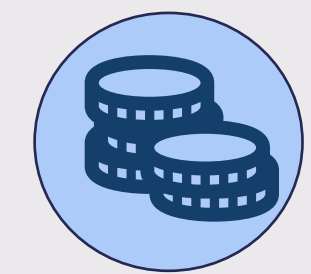
That's it!



Something's missing!



You've got it wrong!



LOCAL GOVERNMENT AND COMMUNITY ENGAGEMENT

- a) There is a representative, inclusive, transparent local government with good communication.
- b) Informed and involved citizens hold local government accountable.
- c) There is sustainable growth and development that does not exceed the town's ability to provide essential services.
- d) The government provides good roads, quality schools, access to safe drinking water, emergency services, a library and other community and recreation spaces, facilities and events.
- e) The government responsibly plans and budgets for community needs and capital expenditures with reasonable, but limited tax burden.



ENVIRONMENT AND CLIMATE RESILIENCE

- a) Flood resilient development adapts to new climate patterns.
- b) Business and light industry do not pollute air, surface or groundwater.
- c) Local food is produced and accessible, locally owned businesses flourish.
- d) Residents limit single occupancy vehicle trips and miles traveled through carpooling, public transit, remote work and making use of on-island services. Electric and hybrid vehicles are more accessible.
- e) Homes and businesses have access to fossil fuel alternatives for heating, power and transportation.
- f) Hazard plans are in place to manage and mitigate impacts to flood and other severe weather events.