

MUNICIPAL TOWN CENTER COMMUNITY VISION

9 HYDE ROAD, GRAND ISLE, VT



Grand Isle Municipal Town Center Vision Elements

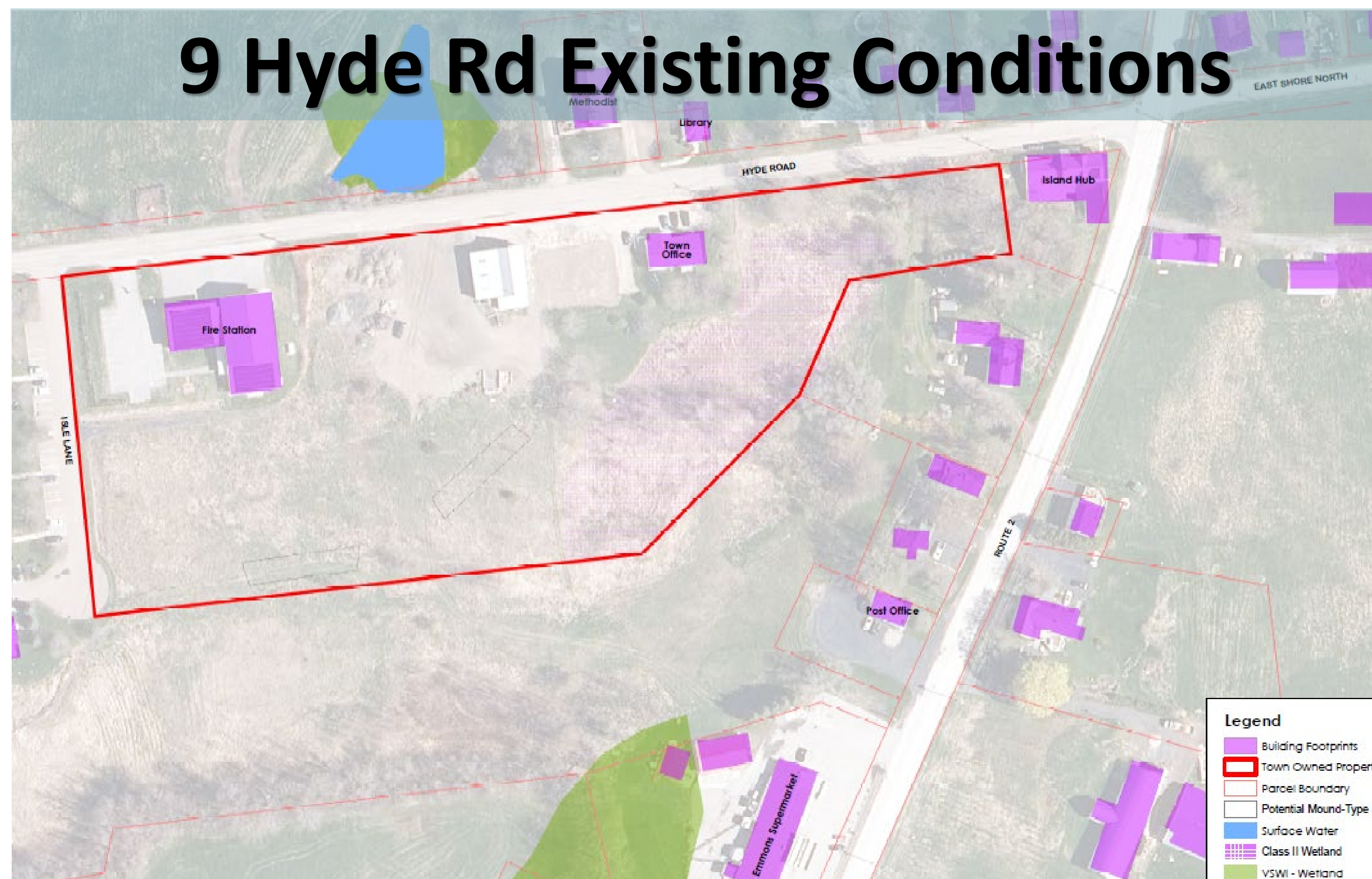
- Town offices
- Library
- Town green along Hyde Road
- Outdoor space for community events
- Indoor space for meetings and classes
- Trail loop around perimeter
- Ice skating
- Connection to Post Office/Emmons
- Complement Donaldson Rd Rec Park

Concept Site Plan



- 1 Town green along Hyde Road
- 2 Building(s) oriented around green. Single building or two with rehab of town office
- 3 Parking areas
- 4 Bandstand or pavilion on green
- 5 Reserve space for wastewater
- 6 Preserve wetland areas

9 Hyde Rd Existing Conditions



Want to get involved, view the community survey or get more information?

Contact the Grand Isle Planning Commission at:

plancom.grandislevt@gmail.com

and/or visit

<https://grandislevt.org/planning-commission/>

Project Development Process

1 Vision and Concept Planning ★ WE ARE HERE!

2 Programing, Schematic Design and Preliminary Site Engineering

3 Design Development, Final Engineering, Construction Documents and Permitting

4 Construction

FUNDRAISING/ BUDGETING

Municipal Town Center FAQs

Q: What is a Municipal Town Center?

A: A Municipal Town Center is a central property that includes, at a minimum, town/civic facilities and public spaces.

Q: Why do we need a vision for a Municipal Town Center?

A: A vision developed with community engagement and input is an important first step for public projects. A Municipal Town Center vision will describe, in broad terms, how the Town's Hyde Road property should be developed and used in the future, which will be used as a guide for developing higher level, refined plans in the interest of the community.

Q: What is a concept site plan?

A: Concept site plans show basic relationships among proposed uses and illustrate approximate locations of structures, parking areas, site access, open space, and other major site features.

Q: Is a concept site plan the final plan that will be constructed?

A: No. A concept site plan is a preliminary site layout that does not factor in engineering or architectural plans. It shows how various vision elements could be included on the site with some limited consideration of site limitations and is intended to illustrate the vision. It may generally be drawn to scale, but will not be based on specific plans for stormwater, wastewater, water supply or other engineering elements. As a result, concept site plans may need to be modified in later phases of design.

Q: How will the municipal town center be funded?

A: At the conceptual planning stage, project costs and funding sources are not known, but the Selectboard has earmarked the Town's ARPA dollars towards the project and anticipates leveraging these dollars with as many grant funds as possible. The Town anticipates applying for a Vermont Community Development Program planning grant for the next phase of planning and design.