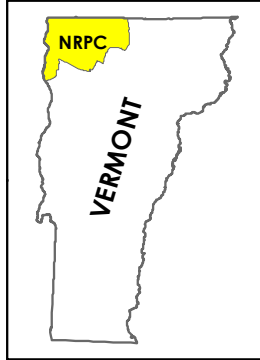


Utility Service Areas

Alburgh, Vermont Act 174

The Energy Development Improvement Act of 2016

This map and the corresponding data is intended to be used to inform energy planning efforts by municipalities and regions. This may also be used for conceptual planning or initial site identification by those interested in developing renewable energy infrastructure. The maps do **NOT** take the place of site-specific investigation for a proposed facility and cannot be used of as "siting maps."



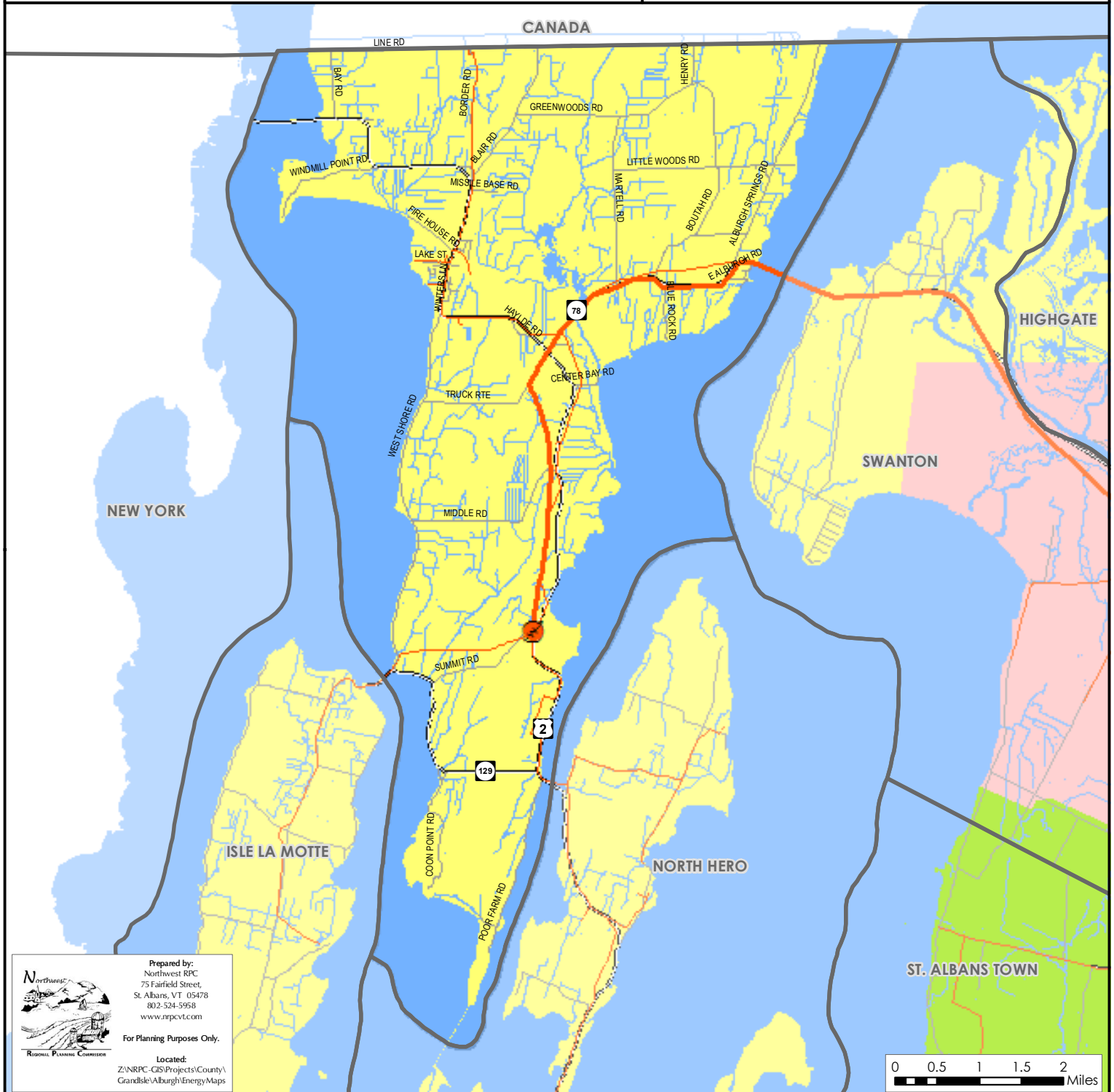
Legend

Utility Service Area Features

- | | |
|--------------------------|--------------------|
| Green Mountain Power | Substation |
| Swanton Village Electric | 3 Phase Power Line |
| Vermont Electric Co-op | Transmission Line |
| Enosburg Falls Electric | |

Sources: VCGI

Disclaimer: The accuracy of information presented is determined by its sources. Errors and omissions may exist. The Northwest RPC is not responsible for these. Questions of on-the-ground location can be resolved by site inspections and/or surveys by a registered surveyor. This map is not sufficient for delineation of features on-the-ground. This map identifies the presence of features, and may indicate relationships between features, but is not a replacement for surveyed information or engineering studies.



Prepared by:
Northwest RPC
75 Fairfield Street,
St. Albans, VT 05478
802-524-5958
www.nrpcvt.com

For Planning Purposes Only.

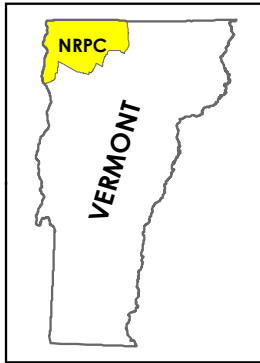
Located:
Z:\NRPC-GIS\Projects\County\
Grandisle\Alburgh\EnergyMaps

Transmission & 3 Phase Power Infrastructure

Alburgh, Vermont
Act 174

The Energy Development
Improvement Act of 2016

This map and the corresponding data is intended to be used to inform energy planning efforts by municipalities and regions. This may also be used for conceptual planning or initial site identification by those interested in developing renewable energy infrastructure. The maps do **NOT** take the place of site-specific investigation for a proposed facility and cannot be used of as "siting maps."



Legend



Substation

3 Phase Power Line

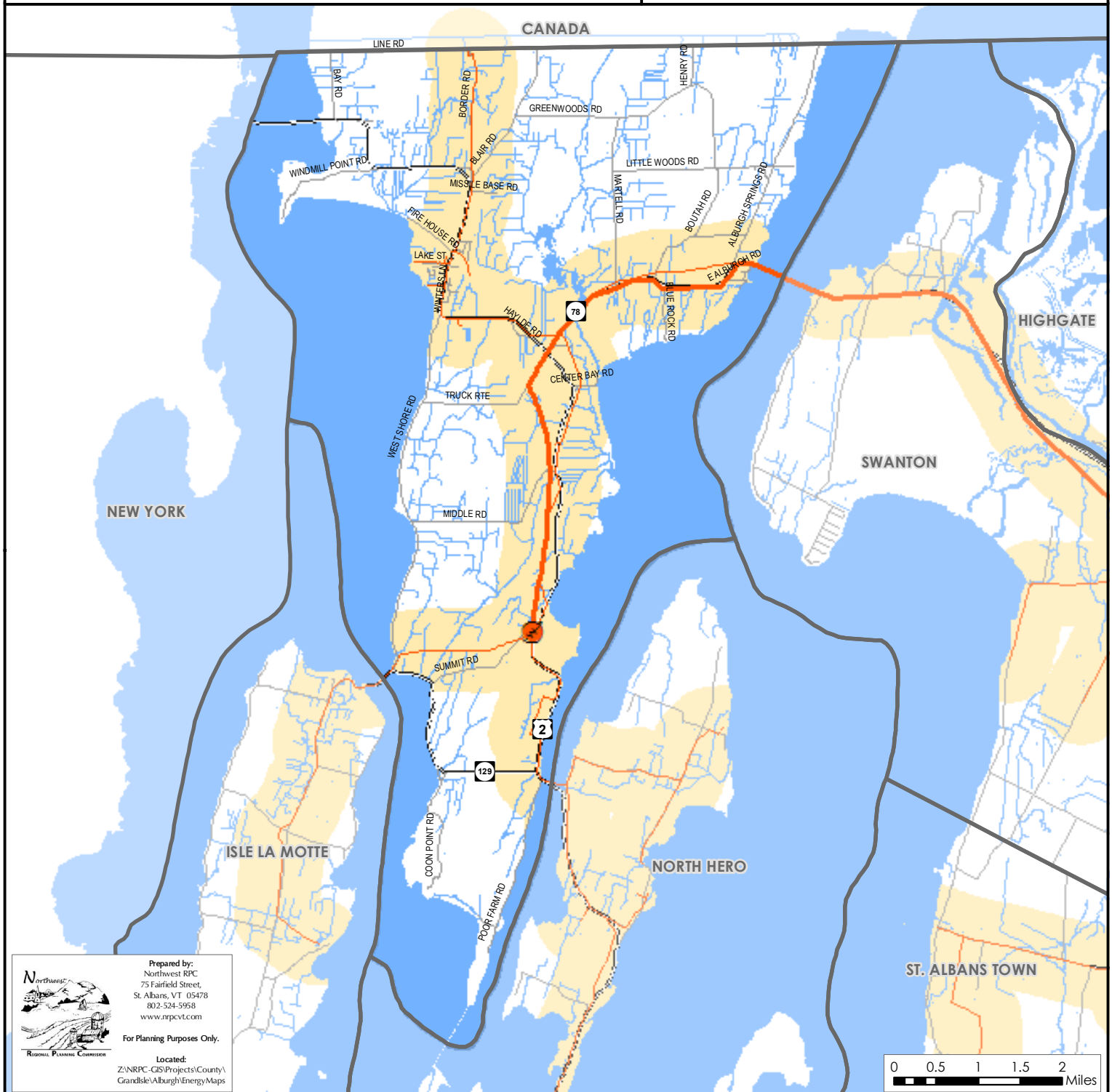
Transmission Line

1/2 Mile Buffer (3 Phase Power Line & Transmission Line)

Map B.2

Sources: VCGI

Disclaimer: The accuracy of information presented is determined by its sources. Errors and omissions may exist. The Northwest RPC is not responsible for these. Questions of on-the-ground location can be resolved by site inspections and/or surveys by a registered surveyor. This map is not sufficient for delineation of features on-the-ground. This map identifies the presence of features, and may indicate relationships between features, but is not a replacement for surveyed information or engineering studies.



Prepared by:
Northwest RPC
75 Fairfield Street,
St. Albans, VT 05478
802-524-5958
www.nrpcvt.com

For Planning Purposes Only.

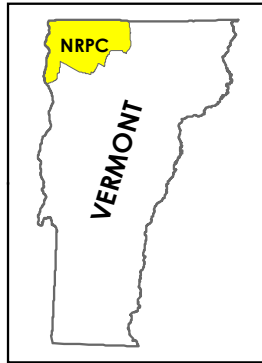
Located:
Z:\NRPC-GIS\Projects\County\
Grandisle\Alburgh\EnergyMaps

Existing Generation Facilities

Alburgh, Vermont Act 174

The Energy Development Improvement Act of 2016

This map and the corresponding data is intended to be used to inform energy planning efforts by municipalities and regions. This may also be used for conceptual planning or initial site identification by those interested in developing renewable energy infrastructure. The maps do **NOT** take the place of site-specific investigation for a proposed facility and cannot be used of as "siting maps."



Legend

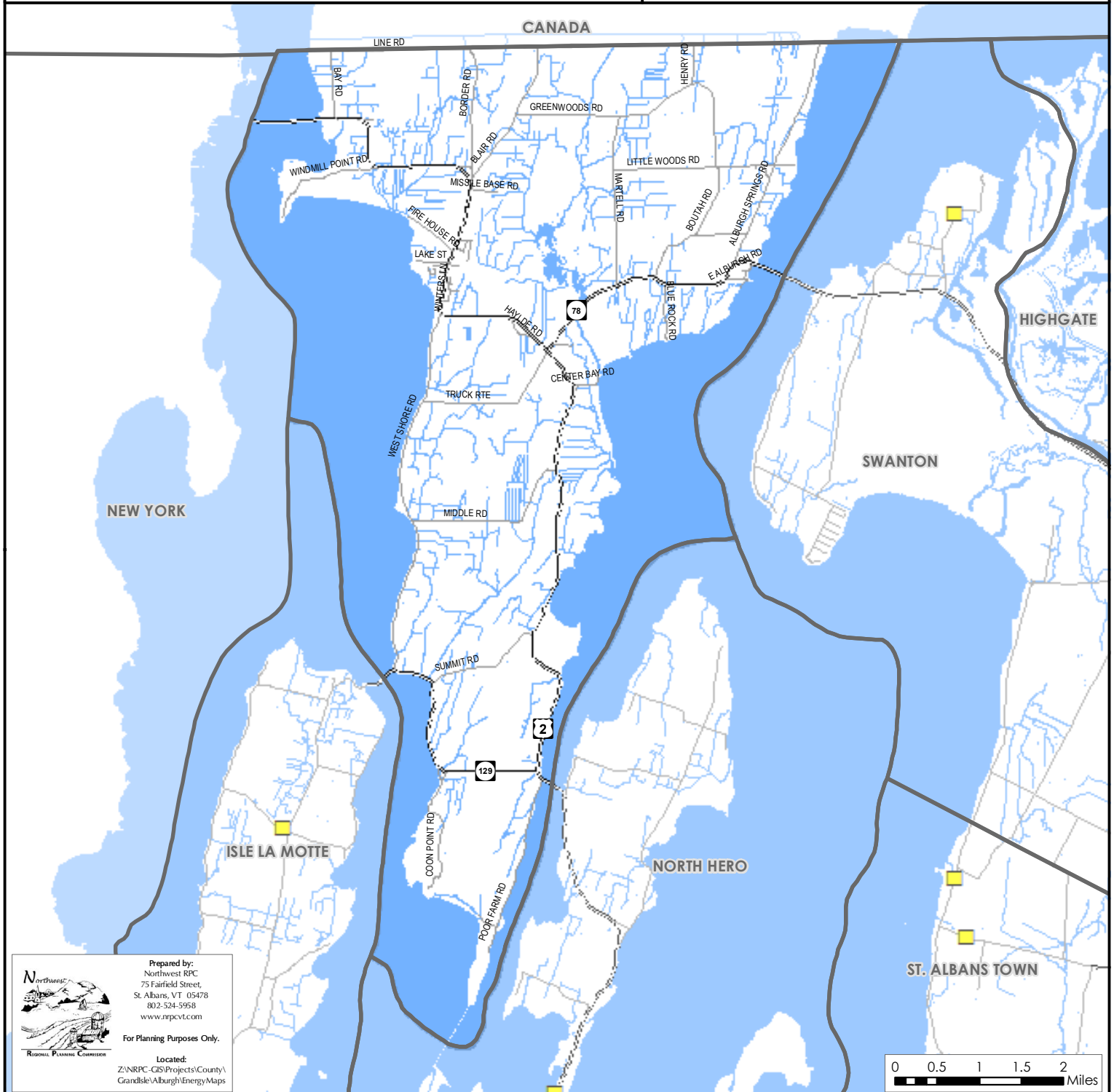
- ★ Biomass Facility
- Hydro Facility
- Solar Facility
- ▲ Wind Facility

Note: Only generators 15kW are shown on the map. A full list of all generators is available.

Sources: VCGI

Disclaimer: The accuracy of information presented is determined by its sources. Errors and omissions may exist. The Northwest RPC is not responsible for these. Questions of on-the-ground location can be resolved by site inspections and/or surveys by a registered surveyor. This map is not sufficient for delineation of features on-the-ground. This map identifies the presence of features, and may indicate relationships between features, but is not a replacement for surveyed information or engineering studies.

Map B.3



Prepared by:
Northwest RPC
75 Fairfield Street,
St. Albans, VT 05478
802-524-5958
www.nrpcvt.com

For Planning Purposes Only.

Located:
Z:\NRPC-GIS\Projects\County\
Grandisle\Alburgh\EnergyMaps

0 0.5 1 1.5 2
Miles

CANADA

USA

VERMONT
NEW YORK

SWANTON

LAKE
CHAMPLAIN

ISLE LA MOTTE

NORTH HERO



Vermont Coordinate System
Transverse Mercator, NAD 83.
For planning purposes only.

Prepared by:
Northwest Regional
Planning Commission
75 Fairfield Street
St. Albans, VT 05478
(802) 524-5958
www.nrpcvt.com

Data Sources: All map features
derived from VGIS digital
coverages. North arrow
on map refers to Grid North.

Location: z:\gis\projects\county\
grandisle\alburgh\townplan2024



0 0.5 1 1.5
Miles

0 4,000 8,000 12,000
Feet

Alburgh
Village

Alburgh
Center

East
Alburgh

South
Alburgh

TOWN OF ALBURGH

Natural Resources

LEGEND

Natural Resource Features

- Wetland
- Surface Water Protection Area
- Deer Yards
- Significant Natural Community
- Rare, Threatened or Endangered Species

Surface Water Features

- Lake or Pond
- Stream or Brook

Transportation Features

- Federal Highway
- State Highway
- Town Highway
- Private Road
- Recreation Trail

Boundary Features

- Town Boundary
- Village Boundary

CANADA

USA

VERMONT
NEW YORK

SWANTON

LAKE
CHAMPLAIN

ISLE LA MOTTE

NORTH HERO

Alburgh
Village
Inset



Vermont Coordinate System
Transverse Mercator, NAD 83.
For planning purposes only.

Prepared by:
Northwest Regional
Planning Commission
75 Fairfield Street
St. Albans, VT 05478
(802) 524-5958
www.nrpcvt.com

Data Sources: All map features
derived from VGIS digital
coverages. North arrow
on map refers to Grid North.

Location: z:\gis\projects\county\
grandisle\alburgh\townplan2024



0 0.5 1 1.5
Miles

0 4,000 8,000 12,000
Feet

Alburgh
Village

Alburgh
Center

South
Alburgh

TOWN OF ALBURGH Proposed Land Use

LEGEND

Proposed Land Use Features

- Village Core
- Village Residential
- Commercial
- High Density
- Low Density
- Industrial
- Agricultural/
Open Space
- Conservation A
- Conservation B
- Shoreland
- Flood Hazard
Overlay

Transportation Features

- Federal Highway
- State Highway
- Town Highway
- Private Road
- Recreation Trail

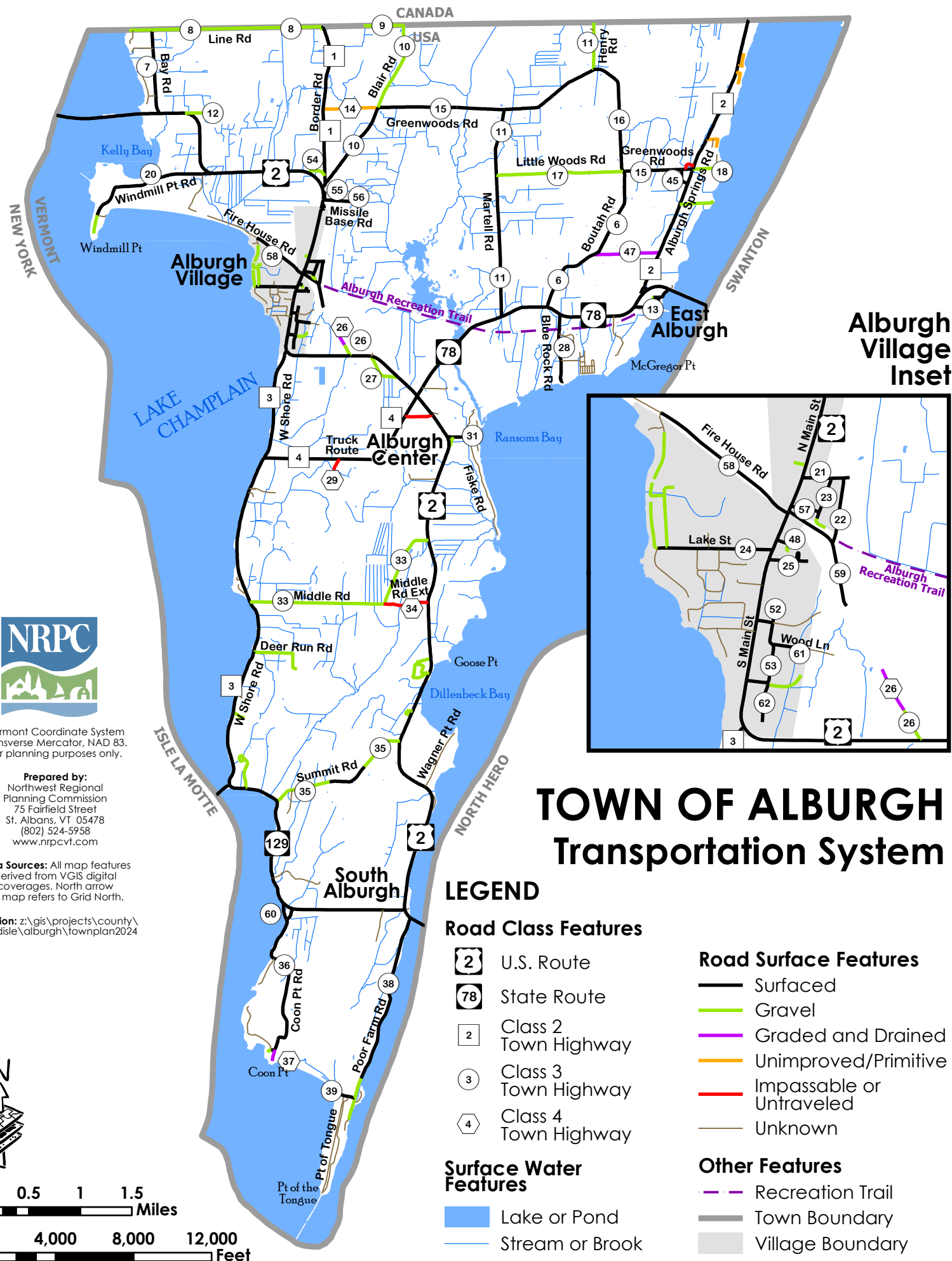
Surface Water Features

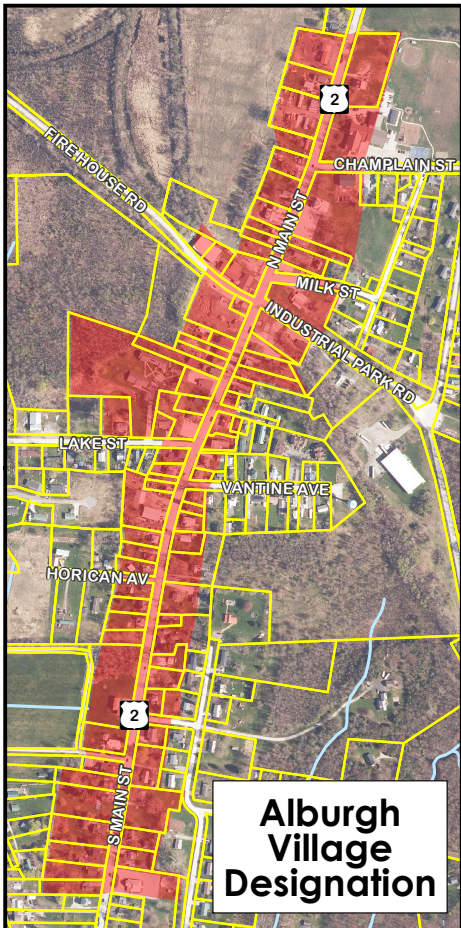
- Lake or Pond
- Stream or Brook

Boundary Features

- Town Boundary
- Village Boundary







Alburgh Village Designation

