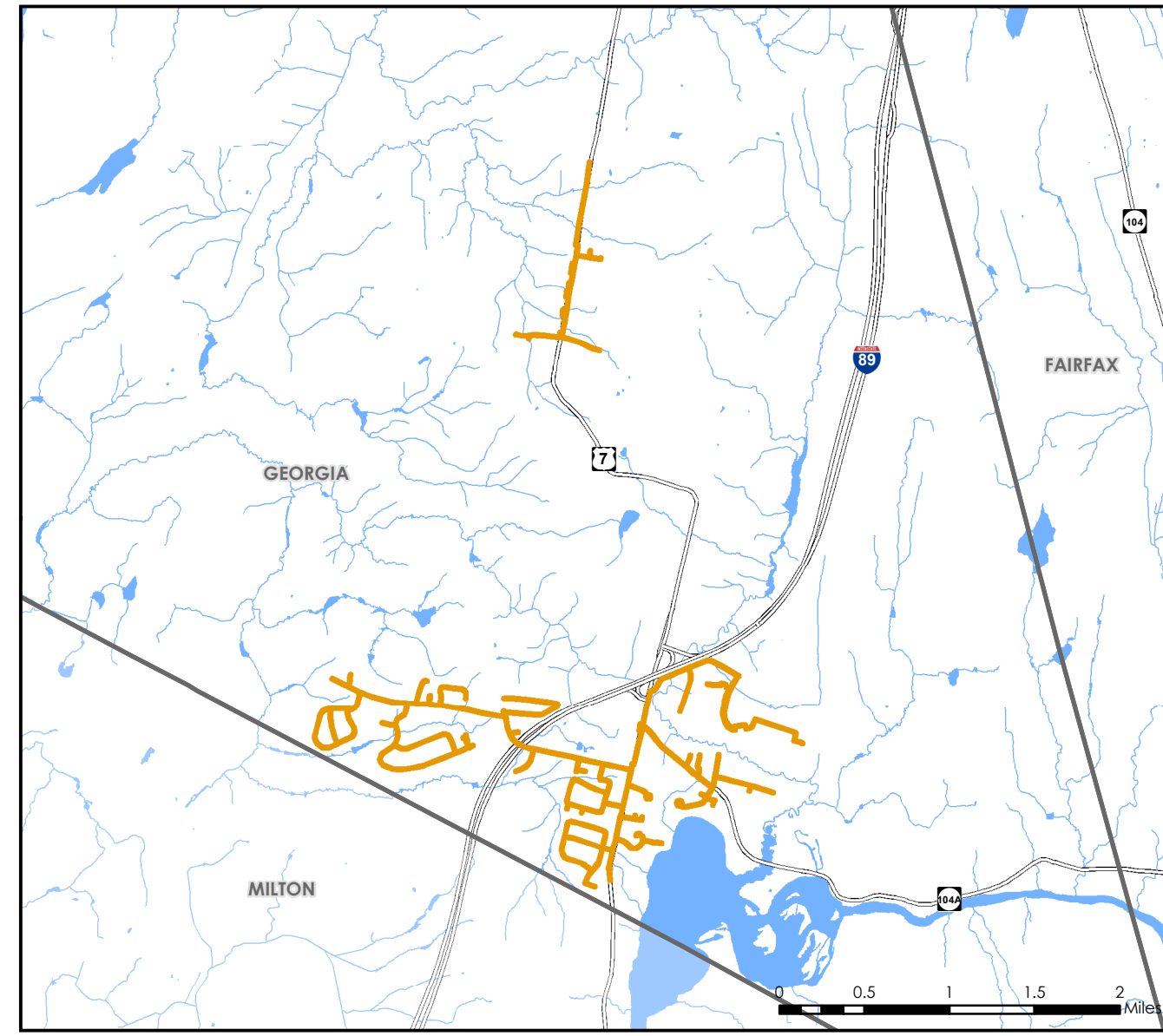
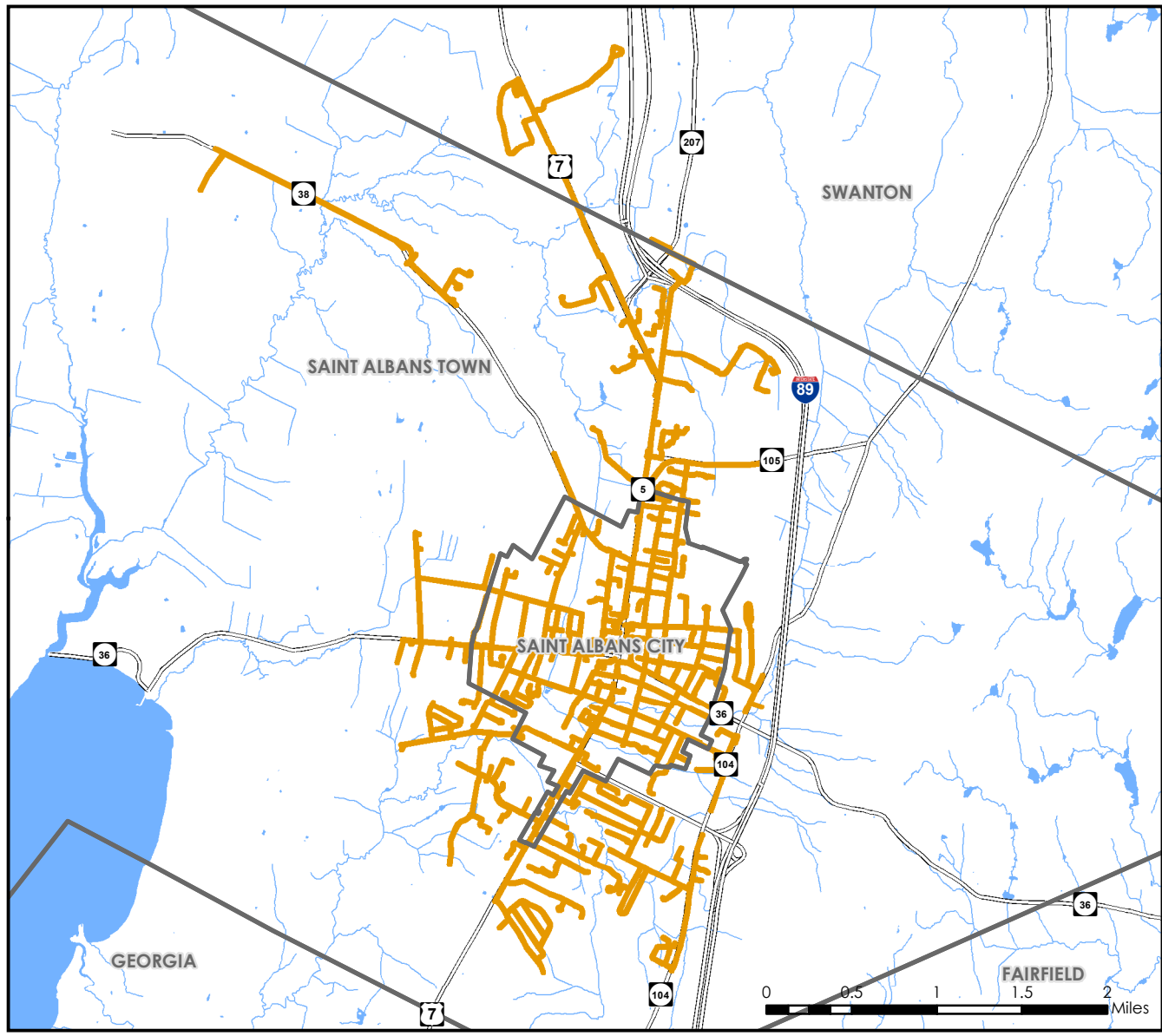
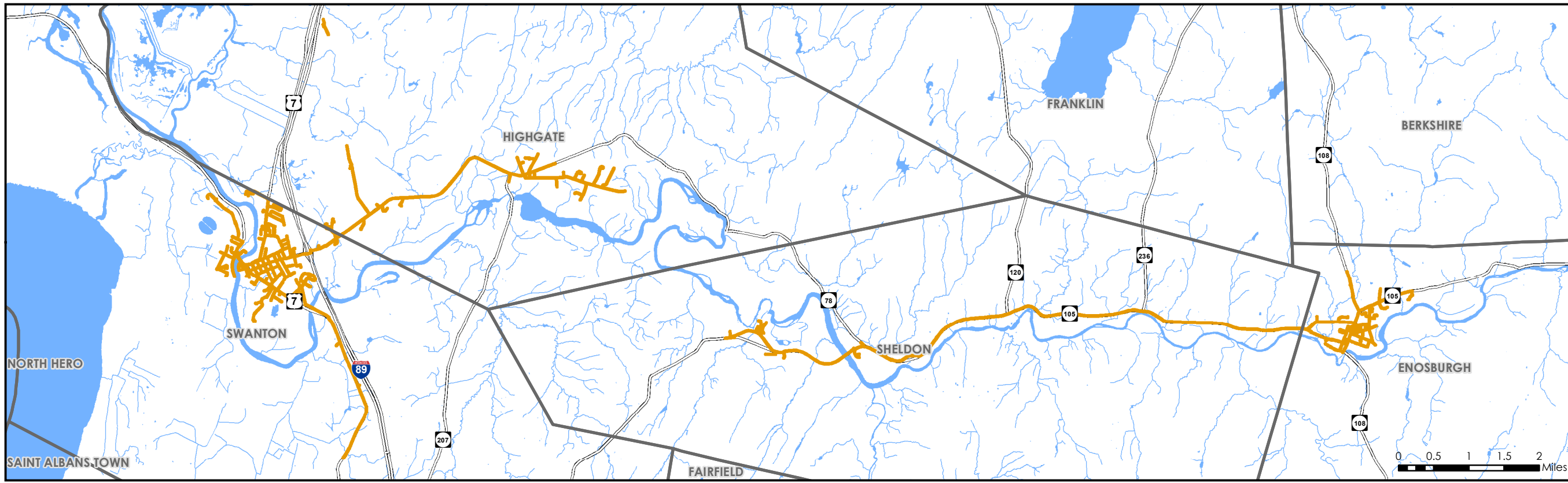


Natural Gas Lines

Northwest Region, VT Act 174 Energy Development Improvement Act

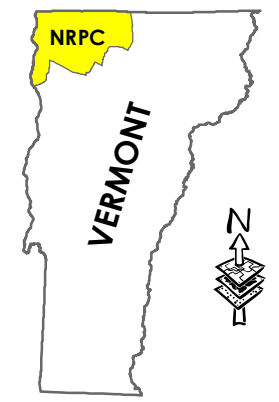
This map and the corresponding data is intended to be used to inform energy planning efforts by municipalities and regions. This may also be used for conceptual planning or initial site identification by those interested in developing renewable energy infrastructure. The maps do **NOT** take the place of site-specific investigation for a proposed facility and cannot be used as "siting maps."



Legend

 Natural Gas Line

Sources: VCGI
Disclaimer: The accuracy of information presented is determined by its sources. Errors and omissions may exist. The Northwest RPC is not responsible for these. Questions of on-the-ground location can be resolved by site inspections and/or surveys by a registered surveyor. This map is not sufficient for delineation of features on-the-ground. This map identifies the presence of features, and may indicate relationships between features, but is not a replacement for surveyed information or engineering studies.



Prepared by:
 Northwest RPC
 75 Fairfield Street,
 St. Albans, VT 05478
 802-524-5958
 www.nrpcvt.com

For Planning Purposes Only.

Located:
 Z:\NRPC-GIS\Projects\
 Energy\2023EnergyPlan\
 2023RegionMaps