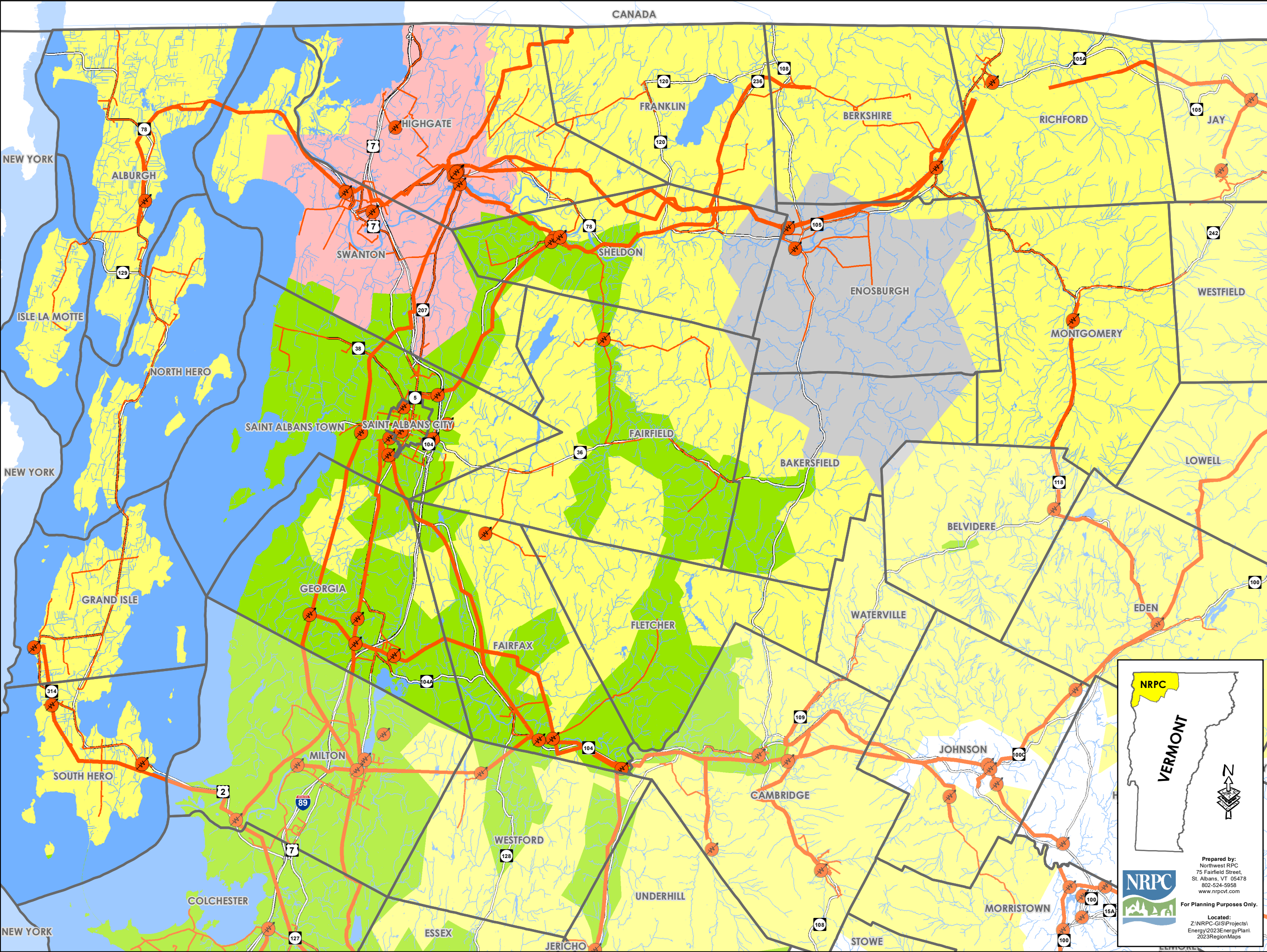


Utility Service Areas

Northwest Region, VT Act 174 Energy Development Improvement Act

This map and the corresponding data is intended to be used to inform energy planning efforts by municipalities and regions. This map also be used for conceptual planning or initial site identification by those interested in developing renewable energy infrastructure. The maps do **NOT** take the place of site-specific investigation for a proposed facility and cannot be used as "stiling maps."



Legend

- Substation
- 3 Phase Power Line
- Transmission Line
- Utility Service Area Features**
- Green Mountain Power
- Swanton Village Electric
- Vermont Electric Co-op
- Enosburg Falls Electric

Prepared by:
Northwest RPC
75 Fairfield Street,
St. Albans, VT 05478
802-524-5958
www.nrpcvt.com

For Planning Purposes Only.

Located:
Z:\NRPC-GIS\Projects\Energy\2023EnergyPlan\2023RegionMaps

Sources: VCGI
Disclaimer: The accuracy of information presented is determined by its sources. Errors and omissions may exist. The Northwest RPC is not responsible for these. Questions of on-the-ground location can be resolved by site inspections and/or surveys by a registered surveyor. This map is not sufficient for delineation of features on-the-ground. This map identifies the presence of features, and may indicate relationships between features, but is not a replacement for surveyed information or engineering studies.

