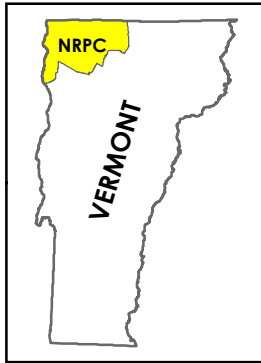







# Existing Generation Facilities

## St. Albans City, Vermont Act 174 The Energy Development Improvement Act

This map and the corresponding data is intended to be used to inform energy planning efforts by municipalities and regions. This may also be used for conceptual planning or initial site identification by those interested in developing renewable energy infrastructure. The maps do **NOT** take the place of site-specific investigation for a proposed facility and cannot be used as "siting maps."



### Legend

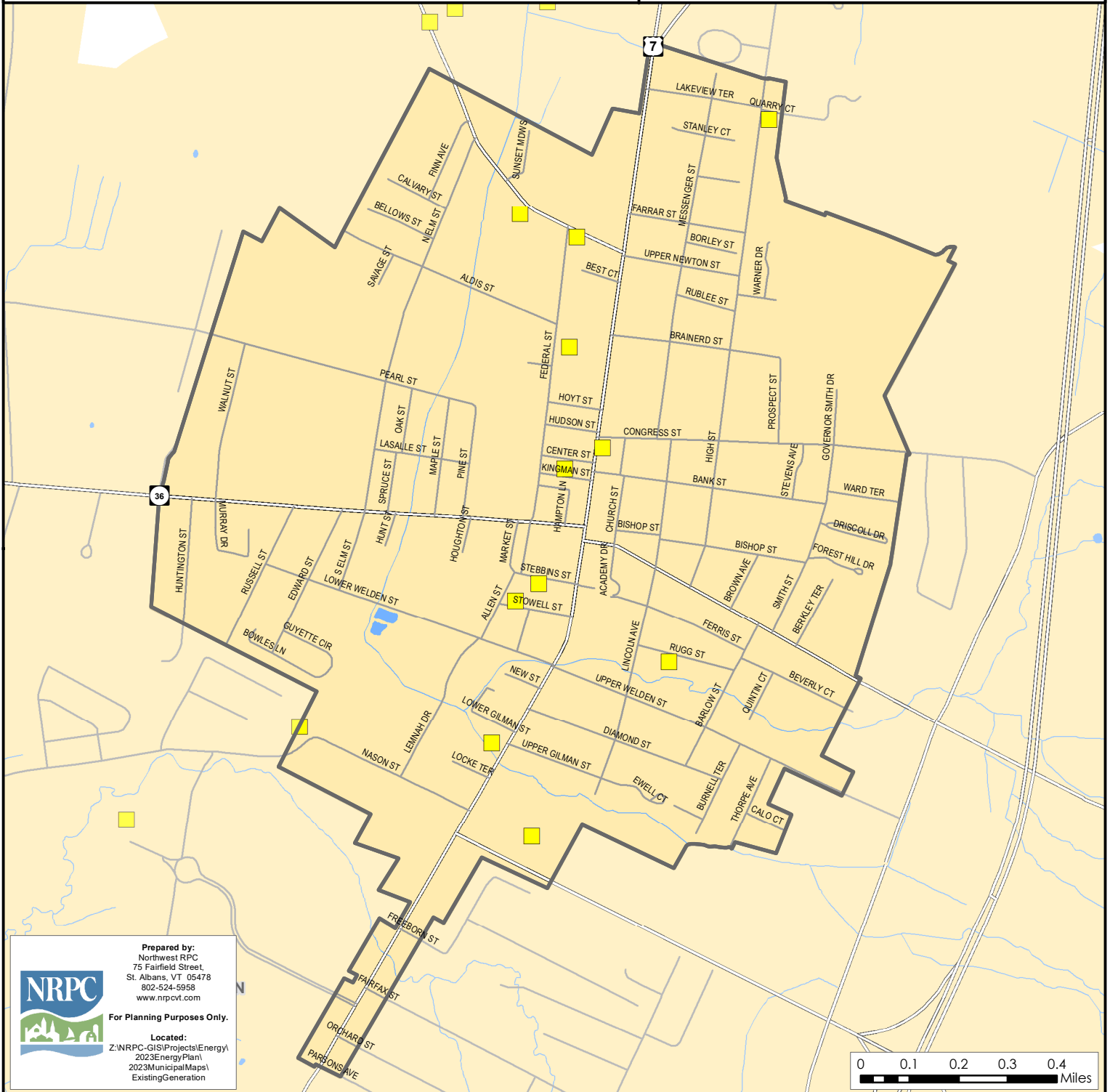
-  Biomass Facility
-  Hydro Facility
-  Solar Facility
-  Wind Facility
-  1/2 Mile Buffer\*  
(3 Phase Power Line & Transmission Line)

**Note:** Only generators 15kW are shown on the map. A full list of all generators is available. The facility locations shown here are approximate and may not reflect exact location. Projects constructed after 2023 may not be shown.

\*The half mile buffer shows where generation facilities can be located without significant loss of power in transit to transmission lines.

**Sources:** VCGI

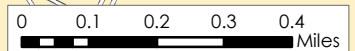
**Disclaimer:** The accuracy of information presented is determined by its sources. Errors and omissions may exist. The Northwest RPC is not responsible for these. Questions of on-the-ground location can be resolved by site inspections and/or surveys by a registered surveyor. This map is not sufficient for delineation of features on-the-ground. This map identifies the presence of features, and may indicate relationships between features, but is not a replacement for surveyed information or engineering studies.



Prepared by:  
Northwest RPC  
75 Fairfield Street,  
St. Albans, VT 05478  
802-524-5958  
www.nrpcvt.com

For Planning Purposes Only.

Located:  
Z:\NRPC-GIS\Projects\Energy\2023\EnergyPlan\2023MunicipalMaps\ExistingGeneration



# Hydro

## St. Albans City, Vermont Act 174 The Energy Development Improvement Act

This map and the corresponding data is intended to be used to inform energy planning efforts by municipalities and regions. This may also be used for conceptual planning or initial site identification by those interested in developing renewable energy infrastructure. The maps do **NOT** take the place of site-specific investigation for a proposed facility and cannot be used as "siting maps."



### Legend

- Substation
- 3 Phase Power Line
- Transmission Line
- 1/2 Mile Buffer (3 Phase Power Line & Transmission Line)
- Designated Outstanding Resource Water
- Known Constraint - Designated National Wild & Scenic River
- Possible Constraint - Stressed or Impaired Water
- Possible Constraint - Rare & Irreplaceable Natural Areas

Sources: VCGI

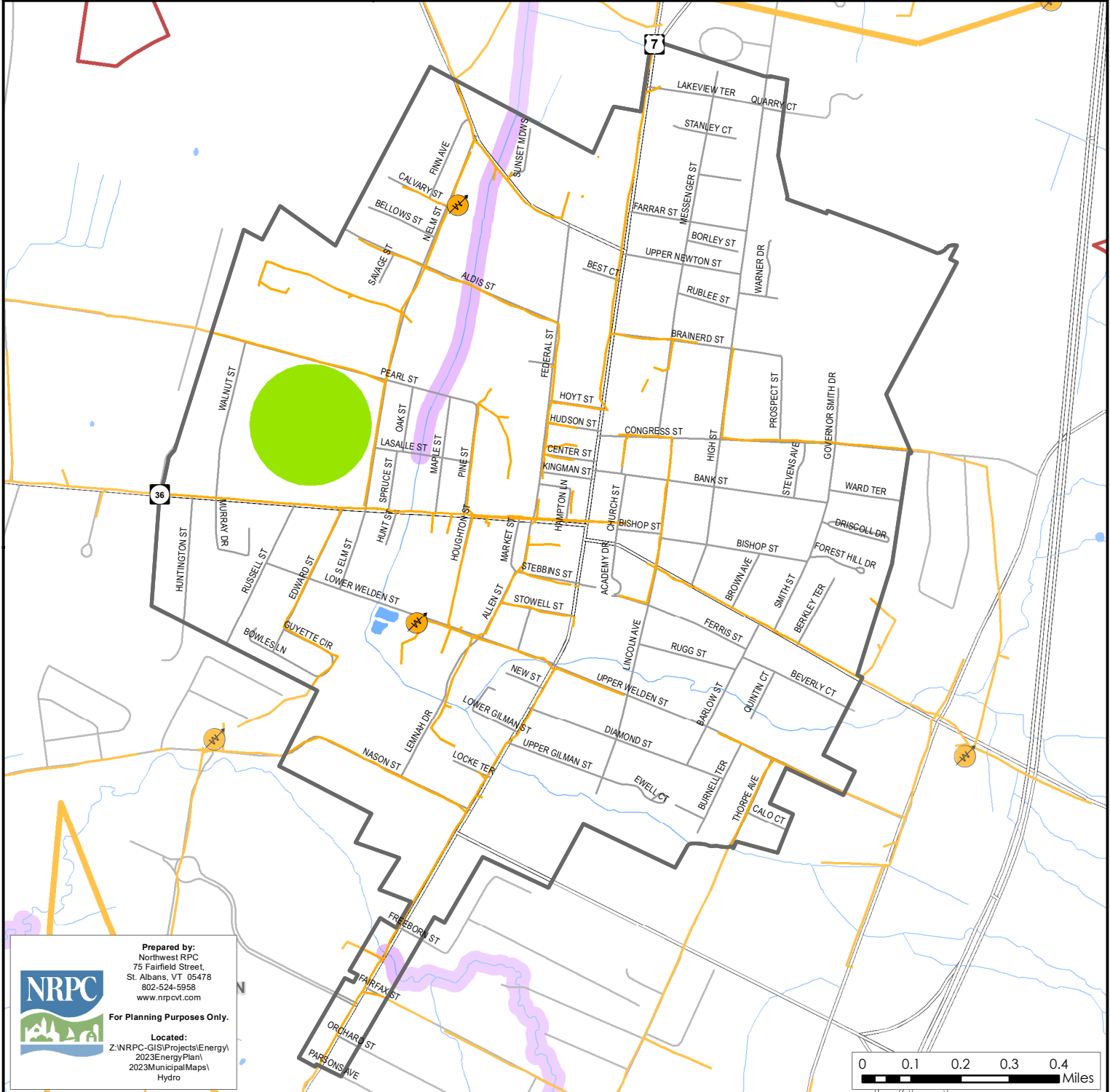
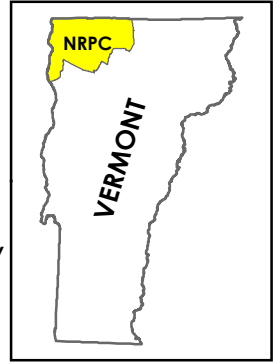
**Disclaimer:** The accuracy of information presented is determined by its sources. Errors and omissions may exist. The Northwest RPC is not responsible for these. Questions of on-the-ground location can be resolved by site inspections and/or surveys by a registered surveyor. This map is not sufficient for delineation of features on-the-ground. This map identifies the presence of features, and may indicate relationships between features, but is not a replacement for surveyed information or engineering studies.

### Potential Hydroelectric Facility

- < 50 kW Capacity
- > 50 kW Capacity
- High Hazard with < 50 kW Capacity
- High Hazard with > 50 kW Capacity

### Operating Hydroelectric Facility

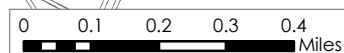
- Dam not on National Wild and Scenic River
- Dam on National Wild and Scenic River



Prepared by:  
Northwest RPC  
75 Fairfield Street,  
St. Albans, VT 05478  
802-524-5958  
www.nrpcvt.com

For Planning Purposes Only.

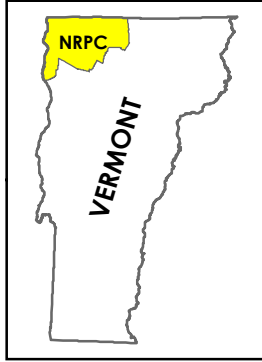
Located:  
Z:\NRPC-GIS\Projects\Energy\2023\Energy Plan\2023MunicipalMaps\Hydro




# Natural Gas Lines

## St. Albans City, Vermont Act 174 The Energy Development Improvement Act

This map and the corresponding data is intended to be used to inform energy planning efforts by municipalities and regions. This may also be used for conceptual planning or initial site identification by those interested in developing renewable energy infrastructure. The maps do **NOT** take the place of site-specific investigation for a proposed facility and cannot be used of as "siting maps."

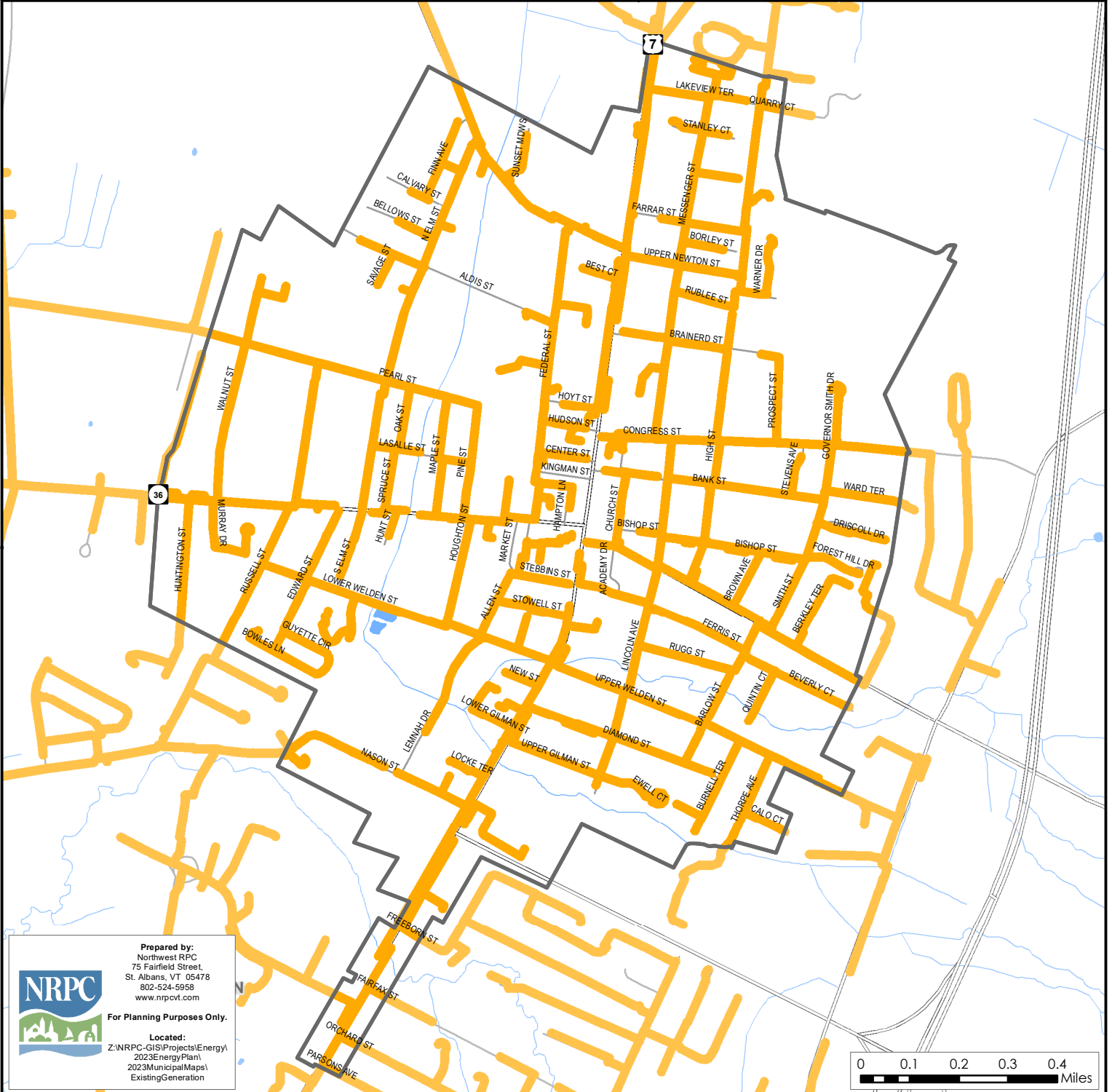


### Legend

 Natural Gas Line

#### Sources: VCGI

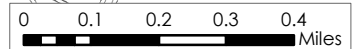
**Disclaimer:** The accuracy of information presented is determined by its sources. Errors and omissions may exist. The Northwest RPC is not responsible for these. Questions of on-the-ground location can be resolved by site inspections and/or surveys by a registered surveyor. This map is not sufficient for delineation of features on-the-ground. This map identifies the presence of features, and may indicate relationships between features, but is not a replacement for surveyed information or engineering studies.



Prepared by:  
Northwest RPC  
75 Fairfield Street,  
St. Albans, VT 05478  
802-524-5958  
www.nrpcvt.com

For Planning Purposes Only.

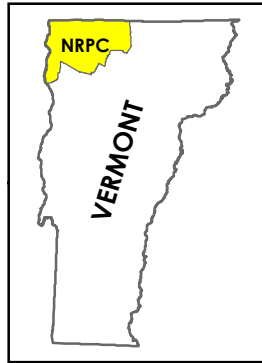
Located:  
Z:\NRPC-GIS\Projects\Energy\2023\EnergyPlan\2023MunicipalMaps\ExistingGeneration



# Solar

## St. Albans City, Vermont Act 174 The Energy Development Improvement Act

This map and the corresponding data is intended to be used to inform energy planning efforts by municipalities and regions. This map also can be used for conceptual planning or initial site identification by those interested in developing renewable energy infrastructure. The maps do **NOT** take the place of site-specific investigation for a proposed facility and cannot be used as "siting maps."



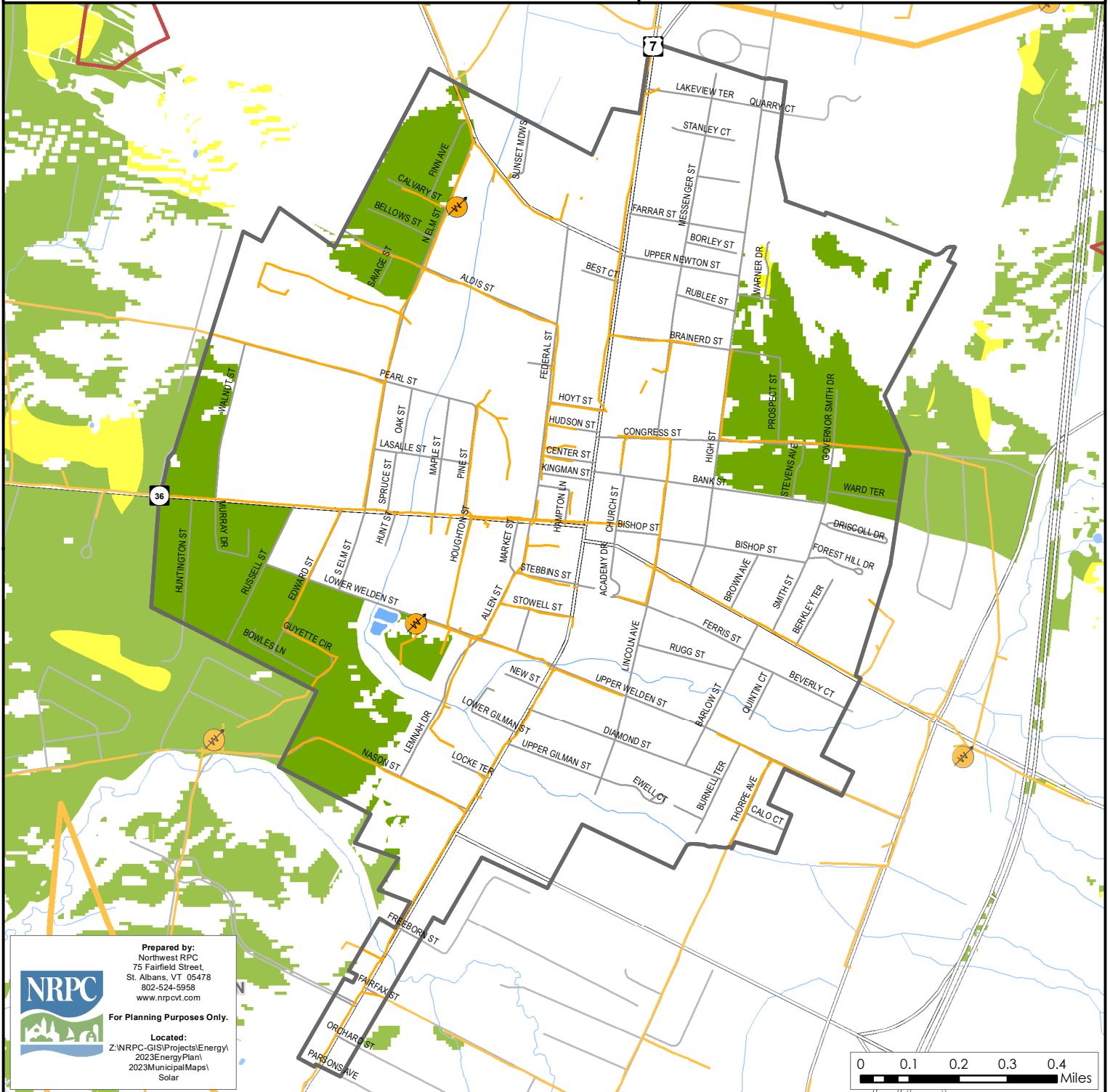
### Legend

- Substation
- 3 Phase Power Line
- Transmission Line
- 1/2 Mile Buffer\* (3 Phase Power Line & Transmission Line)
- Prime Solar/No Known Constraints
- Base Solar/Possible Constraints

\*The half mile buffer shows where generation facilities can be located without significant loss of power in transit to transmission lines.

Sources: VCGI

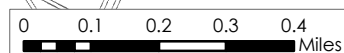
**Disclaimer:** The accuracy of information presented is determined by its sources. Errors and omissions may exist. The Northwest RPC is not responsible for these. Questions of on-the-ground location can be resolved by site inspections and/or surveys by a registered surveyor. This map is not sufficient for delineation of features on-the-ground. This map identifies the presence of features, and may indicate relationships between features, but is not a replacement for surveyed information or engineering studies.



Prepared by:  
Northwest RPC  
75 Fairfield Street,  
St. Albans, VT 05478  
802-524-5958  
www.nrpcvt.com

For Planning Purposes Only.

Located:  
Z:\NRPC-GIS\Projects\Energy\2023\Energy Plan\2023Municipal Maps\Solar

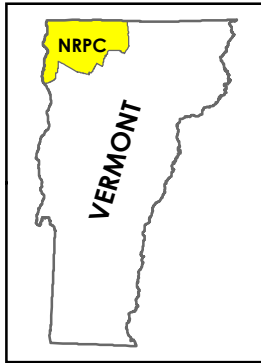


# Transmission & 3 Phase Power Infrastructure

## St. Albans City, Vermont Act 174

### The Energy Development Improvement Act

This map and the corresponding data is intended to be used to inform energy planning efforts by municipalities and regions. This may also be used for conceptual planning or initial site identification by those interested in developing renewable energy infrastructure. The maps do **NOT** take the place of site-specific investigation for a proposed facility and cannot be used as "siting maps."



#### Legend



Substation

3 Phase Power Line

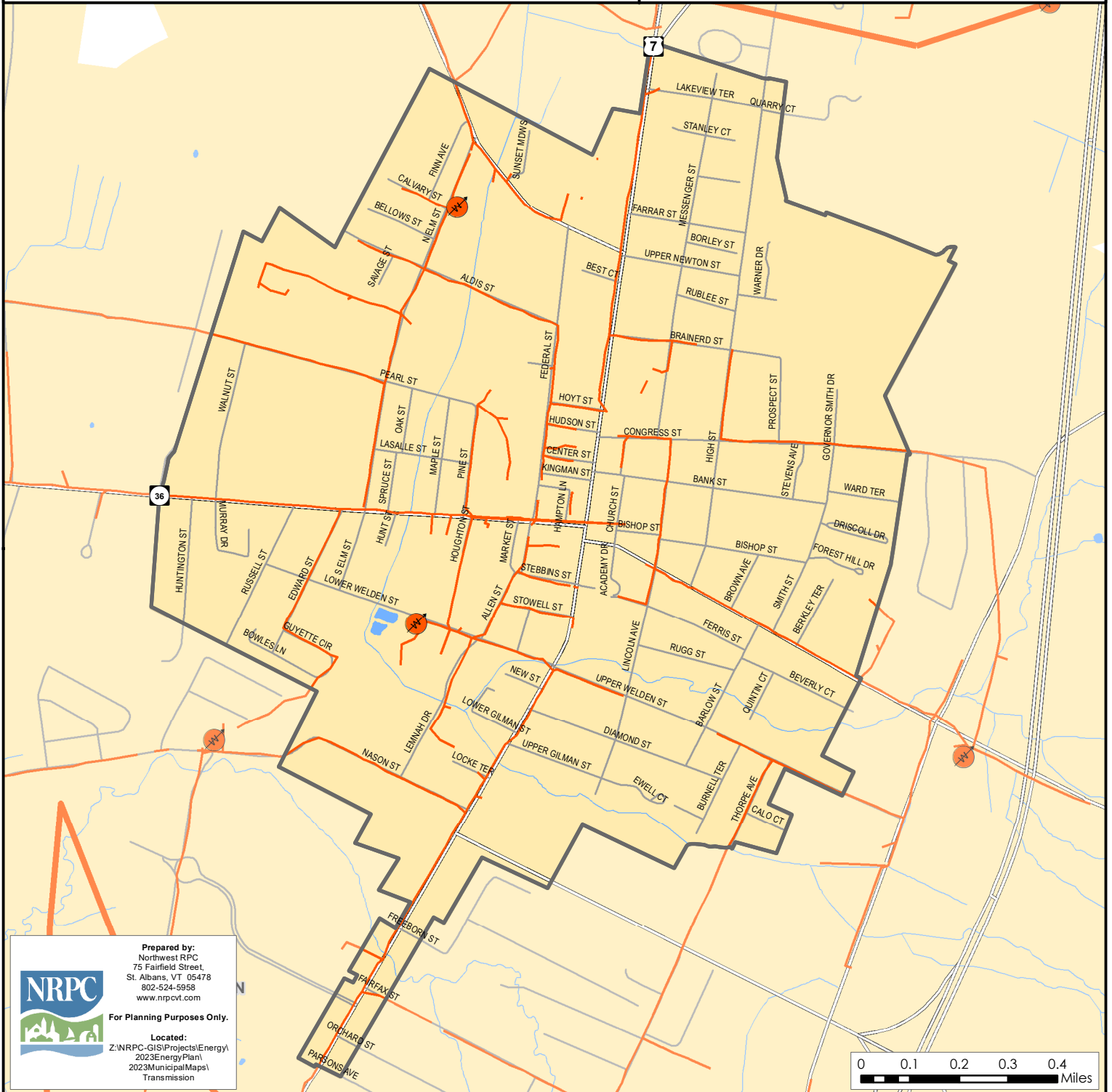
Transmission Line

1/2 Mile Buffer\* (3 Phase Power Line & Transmission Line)

\*The half mile buffer shows where generation facilities can be located without significant loss of power in transit to transmission lines.

Sources: VCGI

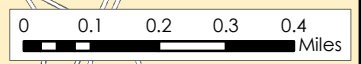
**Disclaimer:** The accuracy of information presented is determined by its sources. Errors and omissions may exist. The Northwest RPC is not responsible for these. Questions of on-the-ground location can be resolved by site inspections and/or surveys by a registered surveyor. This map is not sufficient for delineation of features on-the-ground. This map identifies the presence of features, and may indicate relationships between features, but is not a replacement for surveyed information or engineering studies.



Prepared by:  
Northwest RPC  
75 Fairfield Street,  
St. Albans, VT 05478  
802-524-5958  
www.nrpcvt.com

**For Planning Purposes Only.**

Located:  
Z:\NRPC-GIS\Projects\Energy\2023EnergyPlan\2023MunicipalMaps\Transmission

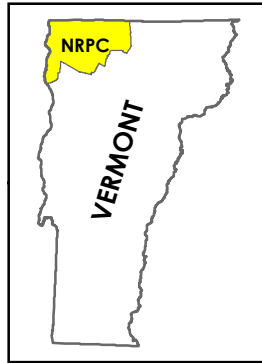


# Utility Service Areas

## St. Albans City, Vermont Act 174

### The Energy Development Improvement Act

This map and the corresponding data is intended to be used to inform energy planning efforts by municipalities and regions. This may also be used for conceptual planning or initial site identification by those interested in developing renewable energy infrastructure. The maps do **NOT** take the place of site-specific investigation for a proposed facility and cannot be used as "siting maps."



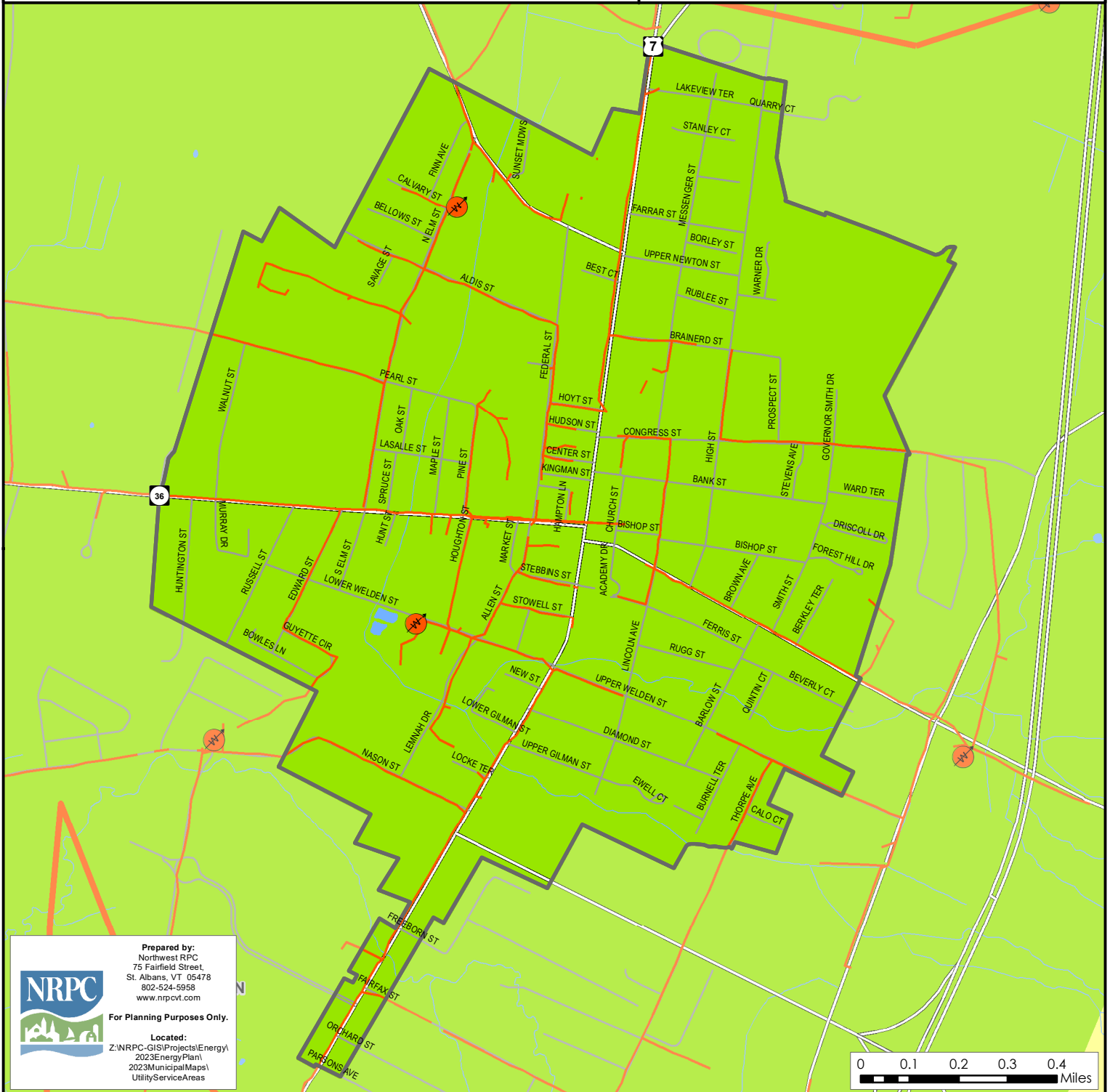
## Legend

### Utility Service Area Features

- Green Mountain Power
- Swanton Village Electric
- Vermont Electric Co-op
- Enosburg Falls Electric
- Substation
- 3 Phase Power Line
- Transmission Line

Sources: VCGI

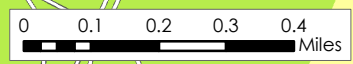
**Disclaimer:** The accuracy of information presented is determined by its sources. Errors and omissions may exist. The Northwest RPC is not responsible for these. Questions of on-the-ground location can be resolved by site inspections and/or surveys by a registered surveyor. This map is not sufficient for delineation of features on-the-ground. This map identifies the presence of features, and may indicate relationships between features, but is not a replacement for surveyed information or engineering studies.



Prepared by:  
Northwest RPC  
75 Fairfield Street,  
St. Albans, VT 05478  
802-524-5958  
www.nrpovt.com

**For Planning Purposes Only.**

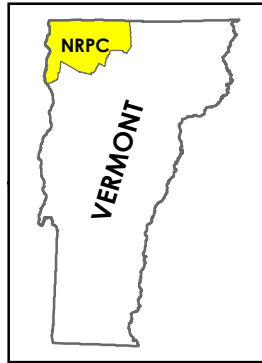
Located:  
Z:\NRPC-GIS\Projects\Energy\2023\EnergyPlan\2023MunicipalMaps\UtilityServiceAreas

# Wind

## St. Albans City, Vermont Act 174 The Energy Development Improvement Act

This map and the corresponding data is intended to be used to inform energy planning efforts by municipalities and regions. This may also be used for conceptual planning or initial site identification by those interested in developing renewable energy infrastructure. The maps do **NOT** take the place of site-specific investigation for a proposed facility and cannot be used of as "siting maps."



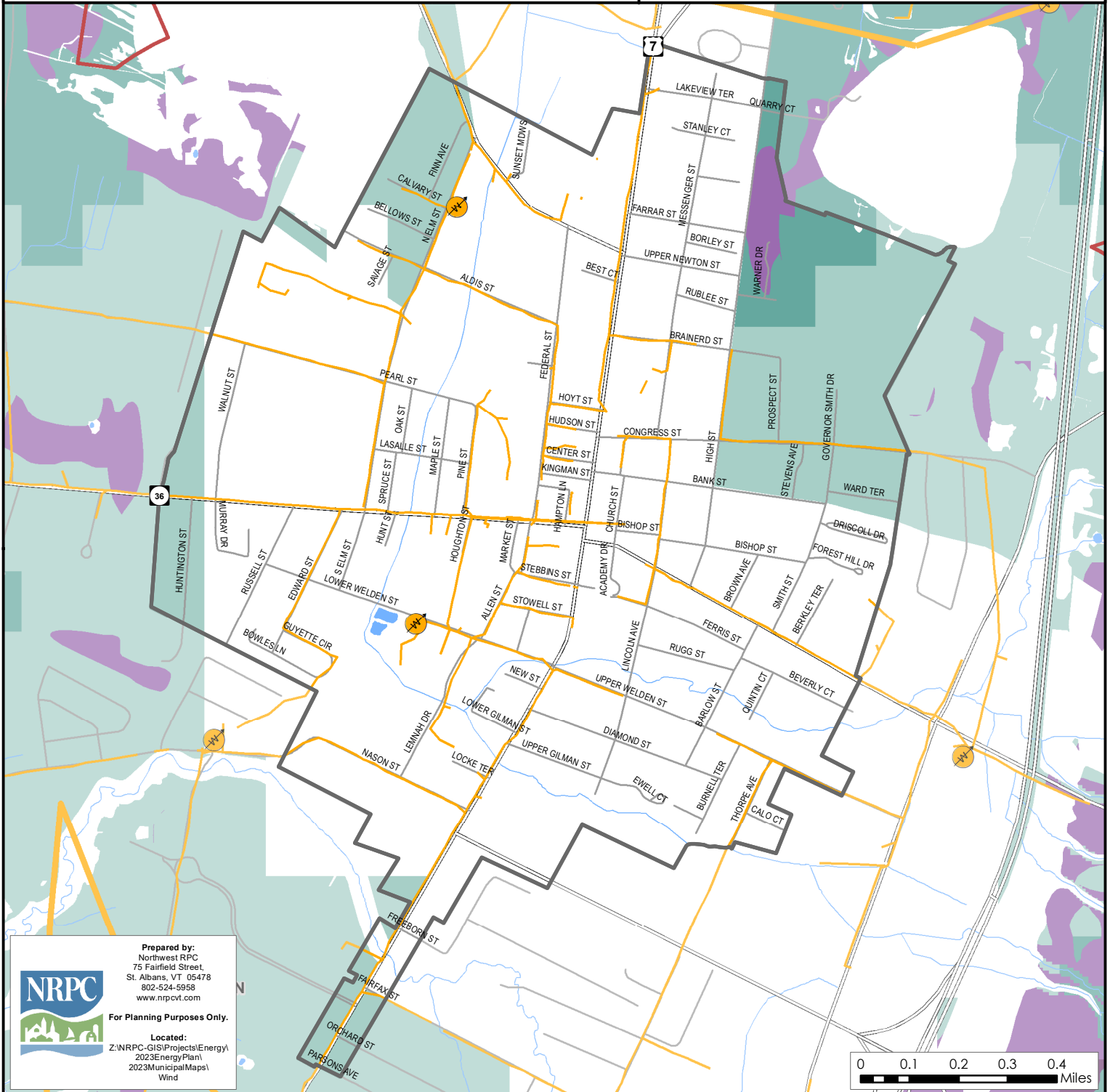
### Legend

- Substation
- 3 Phase Power Line
- Transmission Line
- 1/2 Mile Buffer\* (3 Phase Power Line & Transmission Line)
- Prime Wind**  
Areas of high wind potential and no known constraints. Darker areas have higher wind speeds.
- Base Wind**  
Areas of high wind potential and a presence of possible constraints. Darker areas have higher wind speeds.

\*The half mile buffer shows where generation facilities can be located without significant loss of power in transit to transmission lines.

Sources: VCGI

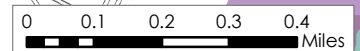
**Disclaimer:** The accuracy of information presented is determined by its sources. Errors and omissions may exist. The Northwest RPC is not responsible for these. Questions of on-the-ground location can be resolved by site inspections and/or surveys by a registered surveyor. This map is not sufficient for delineation of features on-the-ground. This map identifies the presence of features, and may indicate relationships between features, but is not a replacement for surveyed information or engineering studies.



Prepared by:  
Northwest RPC  
75 Fairfield Street,  
St. Albans, VT 05478  
802-524-5958  
www.nrpcvt.com

For Planning Purposes Only.

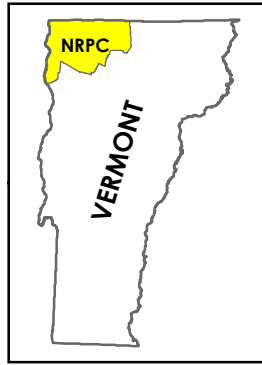
Located:  
Z:\NRPC-GIS\Projects\Energy\  
2023EnergyPlan\  
2023MunicipalMaps\  
Wind



# Woody Biomass

## St. Albans City, Vermont Act 174 The Energy Development Improvement Act

This map and the corresponding data is intended to be used to inform energy planning efforts by municipalities and regions. This may also be used for conceptual planning or initial site identification by those interested in developing renewable energy infrastructure. The maps do **NOT** take the place of site-specific investigation for a proposed facility and cannot be used of as "siting maps."



### Legend

- Biomass System
- Methane Digester
- Substation
- 3 Phase Power Line
- Transmission Line
- Prime Woody Biomass/No Known Constraints
- Base Woody Biomass/Possible Constraints

**Note:** The prime and base biomass shows where biomass, specifically cordwood, could potentially be harvested. The location of biomass generation facilities, including methane digesters, is more site specific and therefore does not have prime or base areas.

**Sources:** VCGI

**Disclaimer:** The accuracy of information presented is determined by its sources. Errors and omissions may exist. The Northwest RPC is not responsible for these. Questions of on-the-ground location can be resolved by site inspections and/or surveys by a registered surveyor. This map is not sufficient for delineation of features on-the-ground. This map identifies the presence of features, and may indicate relationships between features, but is not a replacement for surveyed information or engineering studies.



Prepared by:  
Northwest RPC  
75 Fairfield Street,  
St. Albans, VT 05478  
802-524-5958  
www.nrpcvt.com



For Planning Purposes Only.

Located:  
Z:\NRPC-GIS\Projects\Energy\2023\EnergyPlan\2023MunicipalMaps\WoodyBiomass

