

**MEETING MEMO**

TO: LAMOILLE BASIN WATER QUALITY COUNCIL (BWQC)  
FR: LAMOILLE BASIN CLEAN WATER SERVICE PROVIDER (CWSP) STAFF  
RE: MEETING ON MARCH 26, 2026  
DA: MARCH 19, 2026

=====

Greetings, members of the Lamoille BWQC and others. The next meeting will be held on March 26<sup>th</sup>, and meeting materials are attached. There will be much to cover.

The agenda for the meeting will include: 1) seating of new members; 2) election of a Vice Chair; 3) review of applications for funding; and 4) a presentation on the Lamoille Tactical Basin Plan. There will also be reports and brief updates. Some notes on the agenda items are provided below.

**Introductions/Meeting protocols/Conflict of interest disclosures, if any**

As is customary, time will be set aside for introductions, review of meeting protocols, and announcement of any Conflict of Interest.

**Approval of Minutes**

Please let us know if any part of the minutes for the July meeting need to be corrected.

**Seating of members**

Two new members will be seated at this meeting. Please join me in welcoming them to the Council. As part of this agenda item, staff will also report on the biennial membership renewal process.

**Budget Adjustments**

CWSP Staff will report on at least one budget adjustment request.

**Special Election**

Meghan Rodier’s elevation to the position of Chair has created a vacancy in the Vice Chair position. As noted at the meeting in January, the Council now must hold an Election. The role of the Vice Chair is to “act as Chair in the absence, recusal, or incapacity of the Chair.” The newly elected Vice Chair’s term would run until the annual meeting in July, when annual elections take place.

**Application Review**

Two project applications were submitted in response to the 10th Call for Applications. Both projects propose work in the Floodplain/Stream Restoration category. **The total amount of funding requested for the upcoming phase of work is \$61,077, while full implementation costs are estimated to cost between \$1,188,800 and \$1,251,300.** The larger project-- Heath Road Floodplain Restoration Preliminary Design in Wolcott --is projected to yield an estimated annual phosphorus reduction of almost 35 kg. The smaller project--Georgia Silver Lake Rd Floodplain and Wetland Restoration Preliminary Design--is projected to yield an estimated annual phosphorus reduction of just under 5 kg. The complete applications are attached, as is other supporting information.

**Lamoille Tactical Basin Plan**

Tactical Basin Plans (TBPs) are adopted roughly every five years. The TBP for the Lamoille basin is being prepared now. Vermont law specifically mandates the involvement of Basin Water Quality Councils in tactical basin planning and asks BWQC to consider the resulting plan when making water quality investment decisions. Karen Bates will describe the process when we gather on the 26<sup>th</sup>.

**Updates**

As time is available, we will provide brief updates relating to the CWSP’s prototype system for uploading invoices, progress reports, and project deliverables and the growing list of Task Award conditions.

**Conclusion**

Please let us know if you have suggestions for future meeting topics. Staff is aware of several topics that should be discussed at the May gathering.

Sincere thanks to all who participate!

## AGENDA

### Lamoille Basin Water Quality Council (BWQC) regular meeting

Thursday, March 26, 2026

9:00-11:00 AM

#### Zoom meeting

(Zoom details below)

1. Welcome and introductions
2. Meeting protocols
3. Conflict of interest declarations, if any
4. Review/adjust and approve agenda
5. Approval of minutes
6. Public comment not related to items on agenda
7. Seating of members/alternates – Biennial renewal
8. Budget Adjustment requests
9. Election of Vice Chair
10. Application Reviews
11. Tactical Basin Planning and relation to Lamoille BWQC
12. Updates
13. Conclusion

#### NEXT FUNDING ROUND

Round #	Open	Deadline
11	April 9, 2026	May 14, 2026

#### Join Zoom Meeting

<https://us02web.zoom.us/j/86562460349?pwd=dCtISjdHSGI1OFZ6Z2ZndTRPQ1pRQT09>

Meeting ID: 865 6246 0349

Passcode: 031502

Dial by your location

+1 312 626 6799 US (Chicago)

+1 646 558 8656 US (New York)

+1 646 931 3860 US

Staffing provided by Northwest Regional Planning Commission (NRPC), the Basin 6 Clean Water Service Provider. NRPC's physical / mailing address is 75 Fairfield Street, St. Albans, Vermont 05482.

*In accordance with provisions of the Americans with Disabilities Act (ADA) of 1990, and Vermont's Open Meeting Law, the NRPC will ensure public meeting sites are accessible to all people or provide an opportunity to request accommodations. Requests for free interpretive or translation services, assistive devices, designation of a physical meeting location, electronic access to a meeting, or other requested accommodations, should be made to Amy Adams, NRPC Title VI Coordinator, at 802- 524-5958 or aadams@nrpcvt.com, no later than 2 business days prior to the meeting for which services are requested.*

- **Welcome and introductions**
- **Meeting protocols**

## Zoom Norms and Inclusive Language

- Introductions of all participants at each meeting
- As possible, BWQC members should have in their Zoom Name/Title the following: Name, Organization, “Voting” or “Alternate”, and pronouns (if desired)
- BWQC members are expected to have cameras turned on during entirety of meeting, as technically possible.
- BWQC members are expected to stay focused / avoid multi-tasking and follow the guidance of: “if you wouldn’t do something in an in-person meeting don’t do it in a virtual meeting”
- BWQC members will use the “raise hand” function on Zoom to indicate a request to speak / come off mute – this is in an effort to make sure all are heard in turn.
- All members will stay muted until called upon; if needed, CWSP staff may mute participants to avoid background noise
- Any comments made in the chat will be read aloud at the appropriate time by the CWSP staff in full for the public record / record.

### **Inclusive Language**

<https://pronouns.org/what-and-why>

- Conflict of interest declarations, if any
- Review/adjust and approve agenda

## AGENDA

### Lamoille Basin Water Quality Council (BWQC) regular meeting

Thursday, March 26, 2026

9:00-11:00 AM

#### Zoom meeting

(Zoom details below)

1. Welcome and introductions
2. Meeting protocols
3. Conflict of interest declarations, if any
4. Review/adjust and approve agenda
5. Approval of minutes
6. Public comment not related to items on agenda
7. Seating of members/alternates – Biennial renewal
8. Budget Adjustment requests
9. Election of Vice Chair
10. Application Reviews
11. Tactical Basin Planning and relation to Lamoille BWQC
12. Updates
13. Conclusion

#### NEXT FUNDING ROUND

Round #	Open	Deadline
11	April 9, 2026	May 14, 2026

#### Join Zoom Meeting

<https://us02web.zoom.us/j/86562460349?pwd=dCtISjdHSGI1OFZ6Z2ZndTRPQ1pRQT09>

Meeting ID: 865 6246 0349

Passcode: 031502

#### Dial by your location

+1 312 626 6799 US (Chicago)

+1 646 558 8656 US (New York)

+1 646 931 3860 US

Staffing provided by Northwest Regional Planning Commission (NRPC), the Basin 6 Clean Water Service Provider. NRPC's physical / mailing address is 75 Fairfield Street, St. Albans, Vermont 05482.

*In accordance with provisions of the Americans with Disabilities Act (ADA) of 1990, and Vermont's Open Meeting Law, the NRPC will ensure public meeting sites are accessible to all people or provide an opportunity to request accommodations. Requests for free interpretive or translation services, assistive devices, designation of a physical meeting location, electronic access to a meeting, or other requested accommodations, should be made to Amy Adams, NRPC Title VI Coordinator, at 802- 524-5958 or aadams@nrpcvt.com, no later than 2 business days prior to the meeting for which services are requested.*

- **Approval of minutes**

**Lamoille Basin Water Quality Council (BWQC)**

**Thursday, January 22, 2026**

**9:00 to 11:00 AM**

**Virtual Meeting**

Meeting video posted at <https://youtu.be/xSJetZ06aVY?si=eANzPVqMigWVpA8P>

**A VIDEO RECORDING OF THE MEETING IS AVAILABLE THROUGH THE NRPC  
YOUTUBE CHANNEL (Link above).**

**THE WRITTEN MINUTES ARE A SYNOPSIS OF THE DISCUSSION AT THE MEETING.  
MOTIONS ARE AS STATED. MINUTES WILL BE SUBJECT TO CORRECTION BY THE  
COUNCIL. CHANGES, IF ANY, WILL BE RECORDED IN THE MINUTES OF THE NEXT  
MEETING OF THE COUNCIL**

Council Members: Meghan Rodier (Q), Lauren Weston (Q), Ken Minck (Q), Erin De Vries (Q), Brad Holden (Q), Chris Steel (Q), Peter Danforth (Q)- for portion of meeting.

Q= towards quorum q= towards quorum when representative has recused

Staff: Dean Pierce

Others present: Brent Raymond (Town of Morristown), Richard Goff (q), Dan Koenemanne (WNRCD), Kristen Leahy (Town of Hardwick), Peter Danforth's AI Notetaker, Jim's AI Notetaker, Karen Bates (DEC)

**1. Welcome and introductions**

Meghan Rodier opened the meeting at 9:09am as Chair. A round of introductions was made.

**2. Meeting protocols**

Meghan Rodier reviewed norms for meeting on Zoom. She noted a few typos in the presentation.

**3. Conflict of interest declarations, if any**

No conflict-of-interest declarations were made. Dean made clarifications that this is intended for situations in which a voting member is involved in a project seeking approval.

#### **4. Review/adjust and approve agenda**

No changes to the agenda were made. Erin motioned to approve. Lauren seconded. Motion carried.

#### **5. Approval of minutes**

It was noted that Mel Auffredou's name was misspelled in the previous minutes, as were the names of Chris Steel and JoAnn Hanowski.

Lauren motioned to approve the minutes with these changes. Chris seconded. Brad abstained. Motion carried.

#### **6. Public comment not related to items on agenda**

Lauren shared that Lamoille County NRCD was hosting a community dinner on 1/22/26.

#### **7. Seating of members (if any)**

Dean shared that there are some vacancies on the council. He shared who can hold these positions and stated that there are municipal representative positions open. The BWQC is looking for a land trust representative as well as a municipal representative. Dean is also looking for alternates.

Lauren asked if the council needed to discuss Peter's leaving, and Dean shared that the conservation districts will need to decide on who'd they like to propose as the representative.

#### **8. Budget adjustment requests (if any)**

No adjustments were made. Dean clarified why this is a standing agenda item.

#### **9. Peter Danforth Recognition**

Peter is retiring from his position at the Lamoille County Conservation District. Dean recommended that the BWQC offer appropriate recognition. He also mentioned Peter's willingness to help throughout the years and that he is grateful for Peter's work. Peter then shared his experience at the Conservation District and with the BWQC, and that he hopes the hard work will continue.

Brad motioned to approve the resolution of appreciation for the founding member of the Lamoille BWQC. Erin seconded. Motion passed.

#### **10. Leadership Succession**

Dean explained that the Vice Chair (Meghan) will take over because Peter (Chair) is leaving. There will be an election at the next general meeting for Vice Chair. This position will serve until

the next annual meeting, which will be in July. Come July, there will be an election for both the Chair and Vice Chair. Ken clarified the timeline.

### **11. Lamoille River Modeling**

Dean shared that there are some meeting recordings on the Lamoille County Planning Commission website that do a good job at explaining this project. Meghan followed up with an explanation. She shared that the website also shares information on the community outreach efforts and final report. This model is an extended version of a previous model, with more towns and tributaries included. Dean shared a map of the model extent.

Erin asked where FEMA is at with the new flood maps and if the existing maps were compared with model maps. Meghan noted that the updated FEMA hydrology maps are being included in the model.

Ken said that there has not been a TMDL issued for Deer Creek and asked if it was included in the modeling effort (it was not). Dean showed an image of the model's flood outputs and gave an overview of the slides shared in model presentation meetings.

Brad explained that the FEMA maps are county-based. He shared an event on February 4<sup>th</sup> at CCRPC that will showcase the preliminary maps.

Erin asked if the Lamoille RPC and other planning commissions involved will use the report and recommended projects to prioritize projects in their region and will these projects be coming to the BWQC. Meghan shared that these projects have been important in choosing projects at the Lamoille RPC, as well as focusing on doing multiple projects in one area. Dean asked if it would be better to prioritize projects by county or watershed. Erin explained that some prioritization should be placed on the co-benefits of projects.

Dean asked if Karen had any thoughts on the questions/concerns Erin was proposing on cost-effectiveness versus other benefits. Karen explained that some projects might have lower cost effectiveness but are generally important to the BWQC, in which case the P-reduction could be made up in other projects to meet DEC goals.

Dean asked where the model data will be published and if others could use this data. Meghan said yes and to contact Seth at LCPC for the data.

### **12. Project Adoption**

Dean explained the process for adopting former clean water projects and claiming P-reduction credits. These projects have to be non-regulatory, have existing database records and prior funding sources. Those seeking project adoption could go through the BWQC or CWSP to see if these projects qualify. Then, either the group seeking approval or the CWSP would come to the

BWQC with a formal approval request. The process goes through evaluation, council approval, site access agreements, and verification. There is a cap on credits from adopted projects but currently none have happened in the Lamoille BWQC. Dean shared that the next steps could be a standalone adoption application form and opened the group to discussion.

Dan shared his experience in Basin 5 for considering a project adoption. They are currently “trial running” this process. Meghan asked how far back the clean water funds can be in the projects history, and Dean said that he was unsure. Meghan shared an example where the preliminary work was done with clean water money but later stages were not, and Dean said that this should be put on paper and taken to DEC for approval for adoption.

Dan explained complicating factors in the Basin 5 adoption project regarding design life.

### **13. Updates**

Dean shared a few updates. There was a former project doing a series of buyouts of four properties that had been tabled because background work was moving slowly, but they might not need CWSP funds anymore. Dean brought up that if there was some CWSP funding, maybe it could be adoptable in the future, so they might come forward with a small funding request. Additionally, the Town of Georgia has become a Project Partner. Dean brought up that Chris Rottler was bringing data from the CWSPs to legislators and could not attend this meeting. The next application round opens February 5<sup>th</sup> and the deadline is March 12<sup>th</sup>. Therefore, the next meeting could include Vice Chair election, application review, and presentations on Forest Road Erosion Inventories and Tactical Basin Plan Updates.

### **14. Conclusion**

Quorum was lost at 10:32 and there was no formal motion to adjourn. Before leaving, Erin asked about the schedule of the meetings and Dean clarified that the next meeting will be March 26<sup>th</sup>.

- Public comment not related to items on agenda
- Seating of members/alternates – Biennial renewal

## MEMORANDUM

TO: Lamoille Basin Water Quality Council members  
FR: CWSP Staff  
RE: Seating of New members / Membership Renewal  
DA: March 19, 2026

---

### **Seating of new members**

Two new representatives have been selected to serve as members of the Lamoille Basin Water Quality Council (BWQC).

- Kristen Leahy – Municipal
- Fiona McMurtrie – Land Conservation Organization

Biographical details are attached.

In terms of procedure, the BWQC has established a practice whereby it votes to seat individuals who will serve as Alternates. However, in the case of representatives, there is no vote; instead the individuals are recognized.

Please join me in welcoming them to the BWQC.

### **Biennial membership renewal**

According to [DEC guidance](#), Basin Water Quality Council representatives alternates are appointed for two-year terms. (DEC also notes that when there is a vacancy during that period, those who fill a vacant seat are doing so for the unexpired portion of the term of the person being replaced.)

In years when memberships are expiring, the CWSP must notify DEC in writing who will continue as a BWQC member and who new BWQC members will be. (The deadline is April.) That is the reason CWSP staff have polled members and alternates regarding their interest in serving another term.

Results of that polling are attached.

## SEATING OF NEW MEMBERS

LAMOILLE BASIN	NAME OF REPRESENTATIVE	ORGANIZATION	NAME OF ALTERNATE*(S), IF ANY	ORGANIZATION
Natural Resources Conservation Districts	<a href="#">Peter Danforth</a>	Lamoille County Conservation District	<a href="#">Emily Finnegan</a>	Caledonia NRCD
Natural Resources Conservation Districts	<a href="#">Lauren Weston</a>	Franklin County Natural Resources Conservation District	<a href="#">Daniel Koenemann</a> <a href="#">Mel Auffredou</a> <a href="#">Dorothy Kinney-Landis</a>	WNRCD FCNRCD FCNRCD
Regional Planning Commissions	<a href="#">Meghan Rodier</a>	Lamoille County Planning Commission (Cambridge)	<a href="#">Dick Goff</a>	Lamoille County Planning Commission
Regional Planning Commissions	<a href="#">Brad Holden</a>	Chittenden County Regional Planning Commission	<a href="#">Sarah Muskin</a>	Chittenden County Regional Planning Commission
Watershed Protection Organizations	<a href="#">Erin De Vries</a>	Vermont River Conservancy	<a href="#">Remy Crettol</a>	VT River Conservancy
Watershed Protection Organizations	<a href="#">Chris Steel</a>	Stewards of Greensboro Watersheds	<a href="#">Joann Hanowski</a>	Stewards of Greensboro Watershed
Land Conservation Organization	<a href="#">Fiona McMurtrie</a>	Greensboro Land Trust	<a href="#">Clarice Cutler</a>	Vermont Land Trust
Municipalities	<a href="#">Ken Minck</a>	Town of Georgia	vacant	
Municipalities	<a href="#">Kristen Leahy</a>	Town of Hardwick	vacant	

**Bios follow.**

**Fiona McMurtrie- Endorsed by Land Trust Sector representatives February, 2026**

“I have been a full-time Greensboro resident since 2015, and joined the Greensboro Land Trust about a year ago. After spending my childhood in rural New Zealand and later living in the Boston area, moving to Vermont with my family has felt a little like coming home. I joined High Mowing Organic Seeds ten years ago, and am now the company's Marketing & Ecommerce Manager. Included in my responsibilities is articulating High Mowing's values, which include supporting healthy environments, economies and communities. These values are very much aligned with my own, and appear to be a good fit with the purpose of the Lamoille BWQC.”

**Kristen Leahy- Endorsed by RPC sector (which appoints municipal representatives) February, 2026**

Kristen is the Town of Hardwick's Zoning & Floodplain Administrator and Resilience & Adaptation Coordinator.

“

I have 15 years of experience working in municipal zoning in Vermont. I work full-time for the Town of Hardwick in roles that sit at the intersection of land use, floodplain management, and clean water. Much of my work over the past several years has focused on the Lamoille River and its tributaries, particularly Cooper Brook, and on helping the community respond to and plan around repeated flood impacts.

Since the 2023 and 2024 floods, I have been directly involved in post-flood recovery, damage assessments, and coordination with Vermont DEC, Vermont Emergency Management, and regional partners. That work includes floodplain compliance, river corridor considerations, infrastructure vulnerability, and discussions around nature-based and non-structural mitigation approaches. Clean water and erosion reduction are not abstract concepts in this work; they show up in permitting decisions, recovery choices, and long-term planning conversations every week.

I regularly work with DEC Floodplain Management and River Corridor staff and spend a significant amount of time helping boards, property owners, and residents understand how state clean water and flood-related policies impact on-the-ground decisions and what is realistic for small towns to implement.

## MEMBER RENEWAL PROCESS

- ii. Terms – BWQC members, including alternates, shall be appointed for two-year terms, with the exception of initial appointments where the beginning of the term shall be considered as the beginning of the next state fiscal year. BWQC duly adopted bylaws may establish term limits for membership.
- iii. Alternates
  1. BWQC appointing entities within 10 V.S.A. § 924(g) shall designate one or more alternate statutory member(s) who may act in place of or replace their appointed member in the event of absence or disqualification of that appointed member.
  2. Alternate members may be designated in the same manner as primary BWQC members and appointed at the first BWQC meeting of their term and may be changed with reasonable prior written notice to the BWQC and CWSP.
  3. Terms of Alternate members shall match those of the primary members to which they are paired.
  4. Alternates do not have to represent the same organization/municipality as the primary BWQC seat for which they are an alternate.

Staff of CWSP organizations not involved in CWSP management may serve as BWQC members or alternates for the basin in which they are the CWSP. However, BWQC members shall not include staff of the CWSP host organization providing staff support to their BWQC.

- c. Reappointment at the end of term/ Replacement - At least 4 months before the end of each BWQC member term, the BWQC member should inform the CWSP (and any relevant statutory partner) of their interest to stay on the BWQC for another term. At least 3 months prior to the start of the state fiscal year, the CWSP shall provide to ANR in writing if the BWQC member will continue as a BWQC member or who the new BWQC member will be. This is necessary to provide the funding to support BWQC participation by statutory partners.

- i. For reappointment of Council members:
  1. The reappointment of a BWQC member shall be selected in a manner consistent with initial appointments.
  2. A CWSP shall post any BWQC vacancies on the CWSP website in a timely manner (i.e., within 4 months from which a vacancy is determined, or at the end of a member term who no longer wishes to serve on that CWSP) and shall conduct outreach and an open process following the processes described in the initial membership section above to make potential representatives aware of the opportunity to serve on the BWQC.
- ii. For replacement of a Council member prior to term expiration:
  1. The replacement member shall be selected in a manner consistent with initial appointments, except that a BWQC's duly adopted rules of procedure may express a preference for

replacement members to be drawn from previously designated Alternates.

2. Replacement Members shall be selected based on their knowledge of clean water topics for the basin(s) served and interest and availability to attend BWQC meetings as required.
  3. The initial term of a Replacement member shall be the unexpired portion of the term of the Member being replacement.
- d. Dismissal – following a majority vote (e.g., quorum of the BWQC, a Council member can be dismissed following sufficient documentation that the BWQC member is failing to uphold their duty. An example would be the failure of a member to attend one-half or more of the scheduled meetings per year without good cause, which shall constitute grounds for replacement of the member.
- e. Expansion of the BWQC (additional members – see Rule 10 V.S.A. § 39-501a.) – Additional BWQC membership is only allowed if unanimously approved by the BWQC and approved by the Secretary. When considering the addition of BWQC members, the CWSP shall evaluate the costs of adding to the BWQC membership. Should additional BWQC membership be authorized, the proportionality of the 9 ‘statutory seats’ established by 10 V.S.A. § 924(g)(2) shall be maintained either by membership or weighting of votes, such that if additional BWQC seats are established within any of the ‘statutory’ categories, voting or membership shall be adjusted so that the original proportionality/weighting of votes between and among the statutory seats is maintained. CWSPs and BWQCs are encouraged to consider the addition of two seats representing BIPOC/traditionally disadvantaged communities. The addition of two BIPOC/disadvantaged community seats on the BWQC would not alter the original proportionality of the ‘statutory seats’, and thus each seat would cast a full vote on the BWQC.
- i. Following a unanimous vote of the Council, the BWQC shall submit a request for additional membership which must be provided to the Secretary in writing and address:
    - a. Any unique information or representation that additional BWQC membership would provide that justifies additional BWQC costs and complexity of proportional voting.
    - b. How this information could not be provided through alternative methods such as participation in BWQC meetings (i.e., a public participation option).
    - c. An explanation as to how the proportionality of representation established by 10 V.S.A. § 924(g)(2) shall be maintained either by membership or weighting of votes.
    - d. A CWSP evaluation of the annual costs of adding to the BWQC membership.
  - ii. The Secretary shall respond in writing (45 days) as a determination of whether the information submitted is sufficient to evaluate the request for additional membership and if sufficient will respond in writing as to approval or disapproval of the request.

# Lamoille Basin Water Quality Council Membership Renewal

Status of interest as of March 28, 2026

Statutory Category	Rep or Alt	Name of Rep	Organization of Rep	Name of Alternate	Organization of Alt	StayorGo	notes
Natural Resources Conservation D	Representative	Lauren Weston	Franklin County Natural Resou			Wish to renew	Replaced by Mel <a href="#">Auffredou</a>
Natural Resources Conservation D	Representative	Peter Danforth	Lamoille County Conservation			Not sure	LCCD would love to continue to participate, however as our staffing is still up in the air at this moment,
Regional Planning Commissions	Representative	Meghan Rodier	Lamoille County Planning Com			Wish to renew	
Regional Planning Commissions	Representative	Brad Holden	<a href="#">Lamoille</a> County Planning Com				??
Watershed Protection Organization	Representative	Chris Steel	Stewards of Greensboro Water			Wish to renew	
Watershed Protection Organization	Representative	Erin De Vries	Vermont River Conservancy			Wish to renew	
Land Conservation Organization	Representative	Fiona McMurtrie	Greensboro Land Trust			Wish to renew	
Municipalities	Representative	Kristen Leahy	Town of Hardwick			Wish to renew	
Municipalities	Representative	Ken Minck	Town of Georgia			Wish to renew	
Natural Resources Conservation D	Alternate			Daniel Koenemann	Winooski NRCD	Wish to renew	
Regional Planning Commissions	Alternate			Sarah Muskin	Chittenden County Regional P	Wish to renew	
Regional Planning Commissions	Alternate			Dick Goff	Lamoille County Planning Con	Wish to renew	
Watershed Protection Organization	Alternate			Remy Crettol	VT River Conservancy	Wish to renew	
Watershed Protection Organization	Alternate			Joann Hanowski	Stewards of Greensboro Wate	Wish to renew	
Land Conservation Organization	Alternate			Clarice Cutler	Vermont Land Trust	Wish to renew	

- **Budget Adjustment requests**

## **CWSP File Documentation Note**

**Project:** Barr Property – Implementation

**Subgrant:** OCNRCD Task Award 4 – WPDID 14066

**Sponsor:** Orleans County Natural Resources Conservation District (OCNRCD)

**Date of Request:** February 4, 2026

**Prepared by:** Dean Pierce

**Date of Approval:** February 5, 2026

### **Description of Amendment**

OCNRCD submitted a request to amend the approved project budget to increase funding for planting materials. The amendment increases the total project cost from **\$37,626.50** to **\$41,388.00**, representing an absolute increase of **\$3,761.50** (approximately **9.997%**).

The increase is limited to the “Intervale Center – Tubestock & Bare Root Trees” line item and reflects the purchase of more mature plant stock to improve establishment success and competitiveness against existing vegetation. No other budget categories were modified.

### **Justification**

The sponsor indicated that the revised planting materials will:

- Improve survivability and long-term performance
- Reduce risk of replanting and corrective work
- Enhance overall project effectiveness

The amendment does not expand project scope or timeline. Any additional labor associated with planting will be offset through volunteer match.

### **Policy Review**

This project qualifies as a Design/Implementation Project with total costs under \$150,000. Under the Lamoille Basin CWSP/BWQC Project Budget Adjustment Policy (adopted 1/25/24), changes of up to 10% and less than \$20,000 may be approved at CWSP staff discretion.

The proposed amendment falls within these thresholds and is therefore eligible for administrative approval.

## **Determination**

Following review of the request, supporting documentation, and applicable policy, the amendment was determined to be:

- Technically justified
- Financially reasonable
- Consistent with CWSP budget adjustment policy
- Low risk to project delivery and program objectives

## **Action Taken**

The amended budget was approved by CWSP staff under delegated authority.

This amendment will be listed as an informational item on the next BWQC meeting agenda in accordance with policy requirements.

## **Follow-Up**

- Revised budget to be incorporated into grant and subgrant records
- Volunteer match to be documented at time of reimbursement
- All reimbursement requests to reflect the approved amended budget

---

**Dean Pierce**

- **Election of Vice Chair**

## MEMORANDUM

TO: Lamoille Basin Water Quality Council members  
FR: CWSP Staff  
RE: Election of Vice Chair  
DA: March 19, 2026

---

The following notes are intended to assist the BWQC.

### **Election for a New Vice Chair**

The elevation of the Meghan Rodier to the position of Chair has created a vacancy in the Vice Chair position. As noted at the meeting in January, the Council now must hold an Election. That is because the BWQC bylaws indicate the vacancy for Vice Chair must be filled by an election at the next regular meeting.

#### **Section 604 Vacancies**

In the event of a vacancy in the office of Chair, the Vice Chair shall become the Chair. In the event of a vacancy in the office of Vice Chair, the vacancy shall be filled by election at the next regular meeting. The persons so elected shall hold office until the next annual election or until their successor is elected and installed.

It is staff's expectation that nominations will be made from the floor.

### **Vice Chair Duties**

The Vice Chair shall act as Chair in the absence, recusal, or incapacity of the Chair. (Section 703)

### **Voting**

Each of the nine Council members shall have one vote. (Section 403)

### **Term /the Remainder of the Year**

The newly elected Vice Chair's term would run until the annual meeting in July. (Section 403)

- **Application Reviews**

**MEMO**

TO: LAMOILLE BASIN WATER QUALITY COUNCIL (BWQC)  
 FR: LAMOILLE BASIN CLEAN WATER SERVICE PROVIDER (CWSP) STAFF  
 RE: ROUND 10 APPLICATIONS  
 DA: MARCH 19, 2026

Two project applications were submitted in response to the 10<sup>th</sup> Call for Applications issued in the Lamoille Basin. The enclosed material includes summary tables of phosphorus reduction estimates, cost effectiveness, and scheduling, along with the full copies of the applications.

Both projects propose Preliminary Design phase work in the Floodplain/Stream Restoration category. **The total amount of funding requested for the upcoming phase of work is \$61,077, while full implementation costs are estimated to cost between \$1,188,800 and \$1,251,300.**

WPD ID	Project	Funding request (next project stage)	Estimated Total cost (all project stages) per applicant-Low	Estimated Total cost (all project stages) per applicant-High
14605	Georgia Silver Lake Rd Floodplain and Wetland Restoration Preliminary Design	\$ 29,449.66	\$ 175,000	\$ 300,000
11432	Heath Road Floodplain Restoration - Preliminary Design - Wolcott	\$ 31,627.38	\$ 951,300	\$ 951,300
		<b>\$ 61,077</b>	<b>\$1,126,300</b>	<b>\$1,251,300</b>

The amount of phosphorus reduction represented in the applications is almost 40 kilograms. The larger project (11432), is projected to yield an estimated annual phosphorus reduction of almost 35 kg, while the smaller project (14605), is projected to yield an estimated annual phosphorus reduction of just under 5 kg.

When assuming that ‘midpoint’ implementation costs will apply, the crude cost effectiveness of the projects ranges from approximately \$27,328 per kilogram on the low end (11432) to between \$48,469 and 61,224 per kilogram on the high end (14605).

WPD ID	Project	Annual p reduction kg	Full cost per kg annual P reduction based on midpoint	Full cost per kg annual P reduction fully loaded based on high
14605	Georgia Silver Lake Rd	4.9	\$ 48,469	\$ 61,224
11432	Heath Road Floodplain Restoration -	34.81	\$ 27,328	\$ 27,328
		<b>39.71</b>		

I encourage Council members to review the summary data and applications to prioritize the projects that best align with clean water goals.

CWSP staff may provide additional data regarding the applications at or before the meeting

Title	Georgia Silver Lake Rd Floodplain and Wetland Restoration Preliminary Design	Heath Road Floodplain Restoration - Preliminary Design - Wolcott
<b>Basic Eligibility</b>	Yes	Yes
<b>Applicant Name</b>	Alysia Catalfamo	Meghan Rodier
<b>Applicant Organization</b>	<b>Georgia Conservation Commission</b>	<b>Lamoille County Planning Commission</b>
<b>Applicant Email</b>	acatalfamo@gmail.com	meghan@lcpvt.org
<b>Applicant telephone</b>		+1 (802) 851-6339
<b>Project ID from WPD</b>	14605	11432
<b>Description of Project</b>	The undersized and perched culvert running under Silver Lake Rd should be replaced with a structure that is appropriately sized, eliminates the perched condition, and provides for geomorphic compatibility and aquatic organism passage. It is also recommended that beaver dam analogs (BDAs) be installed along the length of the stream between the footbridge crossing and the upstream end of the culvert that runs under Silver Lake Rd (approximately 638 linear feet). This regenerative practice would allow for restoration of the existing riparian wetland area, reconnection to a portion of the stream's floodplain, and reduced instream velocities, which would slow bank erosion and undercutting.	This project is along the Wild Branch along North Wolcott Road in Wolcott near/just north of the intersection of Heath Road and North Wolcott Road. Floodplain restoration, re-establishing a former flood chute, revegetation of the floodplain, and bank stabilization are all proposed measures to help restore the floodplain and reduce future fluvial erosion/ phosphorus loading. All measures would help protect the eroding stream bank as well as improve floodplain access and provide critical flood mitigation benefits. The LCPC has held past site visits and meetings with the DEC Rivers Program and the Vermont River Conservancy to support the development of this project. See attached 10% design plans produced by SLR. This section along North Wolcott Road has been repeatedly damaged during flooding events causing streambank erosion. The Wild Branch stream channel along this stretch has migrated between 50-100ft feet between 2020 and the end of 2023. Since 1995 the northern project section of the Wild Branch channel migrated 310ft (see map attached to the detailed project description). Meanwhile in the southern project section the stream channel has moved 260ft (see map attached to detailed project description). A significant amount of this channel migration took place during the following flooding events: the 2018 ice jam and flood, the Halloween Storm of 2019, the July 2023 flood, and December 2023 flood. The most notable damage within the proposed project area was during the January 2018 ice jam. The ice jam and flooding caused a complete road washout and took out a utility pole near address 2082 North Wolcott Road. The North Wolcott Road was closed in this location for two weeks following the 2018 ice jam. The Wild Branch stream channel is currently undermining North Wolcott Road. The Town installed limited riprap as a temporary fix to protect the road and nearby homes, but without further stabilization, North Wolcott Road will continue to be undermined. North Wolcott Road is a Class 2 town highway that connects two state highways (VT-Route 14 and Route 15) and is heavily traveled by commuters and truck traffic. The Lamoille County Planning Commission conducted three traffic counts on North Wolcott Road in 2023, capturing an average daily traffic volume of nearly 2,000 vehicles per day that are at risk of being re-routed with long detours. See attached Problem Description/Project History for more details on this project.
<b>Project Latitude</b>	44.69638	44.58164
<b>Project Longitude</b>	-73.05957	-72.47453
<b>Project Phase</b>	<b>Preliminary Design</b>	<b>Preliminary Design</b>
<b>Annual P Reduction KG</b>	4.9	34.81
<b>Total Cost of Proposed Phase</b>	29449.66	\$31,627.38
<b>Amount of funding requested (Proposed Phase)</b>	\$29,449.66	\$31,627.38
<b>Matching Funds Available</b>	\$0.00	\$0 for Preliminary Design Request. Anticipate seeking other funding sources for implementation.
<b>Total Project Costs (All Phases)</b>	implementation: \$100,000-200,000. all phases: \$175,000-300,000	\$951,300.00
<b>Design Life</b>	10	Application indicates "Perpetual". In actuality, Active restoration projects have a design life of 10 years
<b>Estimated Annual O&amp;M cost total</b>	Not available, depends on practices selected	This will be estimated as part of the preliminary design phase. O/M and post monitoring activities for similar projects along the Wild Branch were estimated to cost around \$6,000/ year for the first three years.
<b>Conformance with Tactical Basin Plan TBP</b>	10	10
<b>Number of Co-benefit Areas</b>	2	3
<b>DEC Screening Form Uploaded</b>	Yes	Yes
<b>Map of Project Area Uploaded</b>	Yes	Yes
<b>Project Budget Uploaded</b>	Yes	Yes
<b>Project Schedule Uploaded</b>	Yes	Yes
<b>Landowner Support uploaded</b>	Yes	Yes
<b>Phosphorus Calculator Tool uploaded</b>	Yes	Yes
<b>Created</b>	03/12/26 1:42 PM	03/11/26 2:14 PM
<b>Design/Imp Costs Requested</b>	29449.66	31627.38
<b>Design-Imp Costs Total</b>	implementation: \$100,000-200,000. all phases: \$175,000-300,000	\$951,300
<b>Using_As_Match</b>	No	No
<b>Cultural Resource Review</b>	No	Yes
<b>O&amp;M interest</b>	No	No
<b>continued project</b>	<b>Yes</b>	No

11432 North Wolcott

<b>Title2</b>	<b>Heath Road Floodplain Restoration - Preliminary Design - Wolcott</b>
<b>Basic Eligibility</b>	Yes
<b>Applicant Name</b>	Meghan Rodier
<b>Applicant Organization</b>	<b>Lamoille County Planning Commission</b>
<b>Applicant Email</b>	meghan@lpcvt.org
<b>Applicant telephone</b>	+1 (802) 851-6339
<b>Project ID from WPD</b>	11432
<b>Description of Project</b>	<p>This project is along the Wild Branch along North Wolcott Road in Wolcott near/just north of the intersection of Heath Road and North Wolcott Road. Floodplain restoration, re-establishing a former flood chute, revegetation of the floodplain, and bank stabilization are all proposed measures to help restore the floodplain and reduce future fluvial erosion/phosphorus loading. All measures would help protect the eroding stream bank as well as improve floodplain access and provide critical flood mitigation benefits. The LCPC has held past site visits and meetings with the DEC Rivers Program and the Vermont River Conservancy to support the development of this project. See attached 10% design plans produced by SLR. This section along North Wolcott Road has been repeatedly damaged during flooding events causing streambank erosion. The Wild Branch stream channel along this stretch has migrated between 50-100ft feet between 2020 and the end of 2023. Since 1995 the northern project section of the Wild Branch channel migrated 310ft (see map attached to the detailed project description). Meanwhile in the southern project section the stream channel has moved 260ft (see map attached to detailed project description). A significant amount of this channel migration took place during the following flooding events: the 2018 ice jam and flood, the Halloween Storm of 2019, the July 2023 flood, and December 2023 flood. The most notable damage within the proposed project area was during the January 2018 ice jam. The ice jam and flooding caused a complete road washout and took out a utility pole near address 2082 North Wolcott Road. The North Wolcott Road was closed in this location for two weeks following the 2018 ice jam. The Wild Branch stream channel is currently undermining North Wolcott Road. The Town installed limited riprap as a temporary fix to protect the road and nearby homes, but without further stabilization, North Wolcott Road will continue to be undermined. North Wolcott Road is a Class 2 town highway that connects two state highways (VT-Route 14 and Route 15) and is heavily traveled by commuters and truck traffic. The Lamoille County Planning Commission conducted three traffic counts on North Wolcott Road in 2023, capturing an average daily traffic volume of nearly 2,000 vehicles per day that are at risk of being re-routed with long detours. See attached Problem Description/Project History for more details on this project.</p>
<b>Project Latitude</b>	44.58164
<b>Project Longitude</b>	-72.47453
<b>Project Phase</b>	<b>Preliminary Design</b>
<b>Annual P Reduction KG</b>	34.81
<b>Any one time P reduction KG</b>	34.81
<b>Total Cost of Proposed Phase</b>	\$31,627.38
<b>Amount of funding requested (Proposed Phase)</b>	\$31,627.38
<b>Matching Funds Available</b>	\$0 for Preliminary Design Request. Anticipate seeking other funding sources for implementation.
<b>Total Project Costs (All Phases)</b>	\$951,300.00
<b>KG/\$ Current Phase</b>	0.001100629
<b>KG/\$ Overall</b>	3.6592E-05
<b>Design Life</b>	Perpetual
<b>Estimated Annual O&amp;M cost total</b>	This will be estimated as part of the preliminary design phase. O/M and post monitoring activities for similar projects along the Wild Branch were estimated to cost around \$6,000/ year for the first three years.
<b>Conformance with Tactical Basin Plan TBP</b>	10
<b>Number of Co-benefit Areas</b>	3
<b>DEC Screening Form Uploaded</b>	Yes
<b>Map of Project Area Uploaded</b>	Yes
<b>Project Budget Uploaded</b>	Yes
<b>Project Schedule Uploaded</b>	Yes
<b>Landowner Support uploaded</b>	Yes
<b>Phosphorus Calculator Tool uploaded</b>	Yes
<b>Created</b>	03/11/26 2:14 PM
<b>Design/Imp Costs Requested</b>	31627.38
<b>Design-Imp Costs Total</b>	951300
<b>Using_As_Match</b>	No
<b>Cultural Resource Review</b>	Yes
<b>O&amp;M interest</b>	No
<b>continued project</b>	No

## APPENDIX A. CLEAN WATER INITIATIVE PROGRAM - PROJECT ELIGIBILITY SCREENING FORM

This fillable PDF form is designed to assist with project review by systematically walking through all eligibility criteria. It should be completed for all projects seeking funding for 30% + design or implementation work. It may be applied to projects seeking funding for assessment or development if helpful for determining their alignment with eligibility criteria 2, 3, 6, and 8.

### Step 1: Conduct Eligibility Criteria #1 Screening: Project Purpose

Table 1A: Project Purpose	
From the drop-down list to the right, please select which of the four objectives of Vermont's Surface Water Management Strategy this project addresses. If multiple, please list below:  Minimize flood and fluvial erosion hazards, minimize toxic and pathogenic pollution and chemicals of emerging concern, protect and restore aquatic riparian habitats	Multiple



a final design will have a different WPD-ID from a preliminary design even if for the same project). If the project, or the specific phase, is not yet in the Watershed Project Database, follow directions provided in the CWIP Funding Policy to secure a WPD-ID. Please see [CWIP Funding Policy](#) for more information on the WPD-ID.

Table 3A. WPD-ID	
Watershed Project Database ID number assigned	11432
Watershed Project Database Project Name	Heath Road Floodplain Restoration - Preliminary Design - Wolcott

#### Step 4: Conduct Eligibility Criteria #4 Screening: Natural Resource Impacts<sup>3</sup>

Agency of Natural Resources (ANR) permit screening for natural resource impacts includes 1) an initial desktop review to identify which ANR permitting programs should be contacted, 2) a review by the relevant ANR permitting staff, and 3) a response summary from the project proponent addressing any permitting staff concerns. <sup>4</sup>

- 1) **Table 4. Natural Resource Impacts** facilitates a high-level desktop review of the most likely ANR permits to apply to clean water projects. Project proponents should answer all the questions to identify likely permit needs. <sup>5</sup> Please note that “project site” may include both the active restoration location as well as any additional impact footprint related to staging, site access, or storage of waste or disposed materials.
- 2) If responses to the **Table 4. Natural Resource Impacts** desktop review trigger a permitting staff consultation, **Table 4** provides appropriate contact information.
  - a. Proponents should send the identified permitting staff the following:
    - i. The watersheds project database identification number (WPD-ID) (if available),
    - ii. Project location (GPS coordinates)
    - iii. Summary of proposed scope of work, and
    - iv. Any other relevant information they request that will be utilized in their review.
  - b. **Proponents should clarify they are seeking permitting staff input on potential permitting needs, permit-ability of proposed scope of work, and other design considerations but they are NOT seeking a formal permit determination.**
  - c. Project proponents must attempt to communicate with the permitting staff and provide them with at least thirty days to review the project and provide a

<sup>3</sup> Easements and Riparian Buffer Plantings are excluded from this eligibility requirement/step.

<sup>4</sup> In cases where this screening may have already occurred in a prior project phase, project proponents may supply attachments or links to relevant permit needs assessment documents in place of completing Table 4.

<sup>5</sup> Entities selected for funding are expected to perform due diligence to ensure all applicable permits (including non-ANR state, local, and federal permits) are discovered and secured prior to implementation. The [ANR Permit Navigator](#) and an Environmental Compliance Division Community Assistance Specialist can help confirm ANR permitting needs for any projects once selected for funding.

response. Project proponents are encouraged to perform this screening during a project development phase as opposed to during a project solicitation round to allow for more time for feedback. Permitting feedback may be up to one year old.

- 3) Proponents should summarize permitting staff feedback and how the proposed scope of work will address this at the bottom of **Table 4**. Specifically, please include:
  - a. Which permits or permit amendment are needed or might be needed?<sup>6</sup>
  - b. What type might be needed? (e.g., a general or individual permit<sup>7</sup>)?
  - c. What concerns were voiced by permitting staff?
  - d. How will the proposed scope of work address these concerns?<sup>8</sup>

Table 4A: Natural Resource Impacts	
<b>I. Act 250 Permits</b>	
<b>1. Have any Act 250 (Vermont’s Land Use and Development Control Law) Permits been issued in the project site’s parcel location?<sup>9</sup></b>	Yes <input type="radio"/> <span style="margin-left: 200px;">No <input checked="" type="radio"/></span>
If <b>yes</b> , please provide the permit number and list any water resource issues or natural resource issues found <sup>10</sup> : PermitNumber: _____ ResourceIssues: _____	
If <b>yes</b> , use the <a href="#">Water Quality Project Screening Tool</a> to identify the appropriate regulatory contact for an Act 250 consultation. Regulatory Point of Contact Name/Position: _____	
<b>II. Lake and Shoreland</b>	
<b>1. Is the project site located within 250 feet of the mean water</b>	Yes <input type="radio"/> <span style="margin-left: 200px;">No <input checked="" type="radio"/></span>

<sup>6</sup> Occasionally permit staff may indicate they need a field visit or to see more completed designs prior to making a permit need determination.

<sup>7</sup> Design phase projects that require an individual wetlands permit must have the permit in hand at the close of the final design phase. Implementation phase projects must have the individual permit in hand to be eligible for funding.

<sup>8</sup> Examples could include planned design changes or inviting permitting staff to stakeholder meetings.

<sup>9</sup> An Act 250 Permit is required for certain categories of development, such as subdivisions of 10 lots or more, commercial projects on more than one acre or ten acres (depending on whether the town has permanent zoning and subdivision regulations), and any development above the elevation of 2,500 feet. The [ANR Atlas Clean Water Initiative Program Grant Screening tool](#) can help answer this yes/no question. Follow the instructions on the link above to identify whether your project is located on an Act 250 parcel. Note that the layer to activate in ANR Atlas is now named “Clean Water Initiative Program Grant Screening.”

<sup>10</sup>Note that Act 250 permit amendments may require more extensive review of project impacts to natural resources including wildlife habitat, significant natural communities, and riparian zones. Please consult with the Act 250 District Coordinator regarding the nature and scope of that review and what bearing it may have on your project design.

level (shoreline) of a lake or pond? <sup>11</sup>	
<p>If <b>yes</b>, you might need either a Shoreland Protection Act Permit or a Lake Encroachment Permit. Use the <a href="#">Water Quality Project Screening Tool</a> to find the Lakes and Ponds Program contact for your project's region.</p> <p>Regulatory Point of Contact Name/Position:</p>	
<b>III. Rivers, River Corridors, and Flood Hazard Areas</b>	
<p><b>1. Is there any portion of the project site located within 100' of a river corridor and/or mapped Federal Emergency Management Agency (FEMA) flood hazard area<sup>12</sup>? (e.g. a stormwater pond's pipe draining into a river corridor area)? Any permanent excavation/filling or construction within a flood hazard area or river corridor may trigger regulatory requirements through municipal bylaws or through state authorities.</b></p>	<p>Yes <input checked="" type="radio"/> No <input type="radio"/></p>
<p>If <b>yes</b>, you will need to speak with a <a href="#">Floodplain Manager</a>. Use the <a href="#">Water Quality Project Screening Tool</a> to find the Floodplain Manager for your project's region.</p> <p>Regulatory Point of Contact Name/Position: Alexis Nevins/Floodplain Manager</p>	
<p><b>2. Is any portion of the project site within a perennial river or stream channel?</b> <sup>13</sup></p>	<p>Yes <input checked="" type="radio"/> No <input type="radio"/></p>
<p>If <b>yes</b>, you will need to speak with a <a href="#">Stream Alteration Engineer</a>. Use the <a href="#">Water Quality Project Screening Tool</a> to find the Stream Alteration Engineer for your project's region.</p> <p>Regulatory Point of Contact Name/Position: Christopher Brunelle/River Management Engineer</p>	
<b>IV. Wetland</b>	

<sup>11</sup> The [ANR Atlas Clean Water Initiative Program Grant Screening tool](#) can help answer this yes/no question. Follow the instructions on the link above to identify whether your project is located in the jurisdictional zone to trigger a Lakeshore permit. Note that the layer to activate in ANR Atlas is now named "Clean Water Initiative Program Grant Screening."

<sup>12</sup> FEMA mapped Flood Hazard Areas are not available statewide on the ANR Natural Resources Atlas. For projects located in Grand Isle, Franklin, Lamoille, Addison, Essex, Orleans, Caledonia, and Orange Counties, maps are available via the FEMA Flood Map Service Center: <https://msc.fema.gov/portal/home>. ANR Floodplain Managers are available to provide technical assistance if needed.

<sup>13</sup> Stream Alteration Permits regulate all activities that take place within perennial river and stream channels. Examples of regulated activities include streambank stabilization, dam removal, road improvements that encroach on streams, and bridge/culvert construction or repair. The [ANR Atlas Clean Water Initiative Program Grant Screening tool](#) can help answer this yes/no question. Follow the instructions on the link above to identify whether your project is located in the jurisdictional zone to trigger a Stream Alteration permit. Note that the layer to activate in ANR Atlas is now named "Clean Water Initiative Program Grant Screening."

<p>1. Does the <a href="#">Wetland Screening Tool</a><sup>14</sup> provide a result of wetlands likely, very likely, or present at the project site?</p>	<p>Yes <input checked="" type="radio"/> No <input type="radio"/></p>
<p>2. Does your project site involve land that is in or near an area that has <u>any</u> of the following characteristics:</p> <ul style="list-style-type: none"> <li>o Water is present – ponds, streams, springs, seeps, water filled depressions, soggy ground under foot, trees with shallow roots or water marks?</li> <li>o Wetland plants, such as cattails, ferns, sphagnum moss, willows, red maple, trees with roots growing along the ground surface, swollen trunk bases, or flat root bases when tipped over?</li> <li>o Wetland Soils – soil is dark over gray, gray/blue/green? Is there presence of rusty/red/dark streaks? Soil smells like rotten eggs, feels greasy, mushy or wet? Water fills holes within a few minutes of digging? (See <a href="#">Landowners Guide to Wetlands</a> for additional information on identifying wetlands onsite.)</li> </ul>	<p>Yes <input checked="" type="radio"/></p> <p>No <input type="radio"/></p> <p>Not Sure <input type="radio"/></p>
<p>If you answered <i>yes</i> or <i>not sure</i> to <u>either</u> of the above questions, you will need to contact your <a href="#">District Wetlands Ecologist</a> using the <a href="#">Wetland Inquiry Form</a>. The District Wetlands Ecologist can help determine the approximate locations of wetlands and whether you need to hire a Wetland Consultant to conduct a wetland delineation. Alternatively, if you answered <i>yes</i> or <i>not sure</i> to <u>either</u> of the above questions, you can simply budget for a Wetland Consultant in the proposed scope of work. Any activity within a Class I or II wetland or wetland buffer zone (minimum of 100 feet and 50 feet respectively) which is not exempt or considered an “allowed use” under the <a href="#">Vermont Wetland Rules</a> requires a permit. All permits must go through review and public notice process, which takes at minimum 6 weeks for a General Permit and 5 months for an Individual Permit.</p> <p><b>Regulatory Point of Contact Name/Position:</b> Staci Pomeroy /Lead River Scientist</p>	
<p>1. Is your project a Wetland Restoration project type?</p>	<p>Yes <input type="radio"/> No <input checked="" type="radio"/></p>
<p>If you answered yes, under the <a href="#">Vermont Wetland Rules</a> you will need an “allowed use” determination from the DEC Wetlands Program. Contact your <a href="#">District Wetlands Ecologist</a> using the <a href="#">Wetland Inquiry Form</a>.</p> <p><b>Regulatory Point of Contact Name/Position:</b></p>	
<p><b>V. Fish and Wildlife</b></p>	
<p>State law protects endangered and threatened species. No person may take or possess such species without a Threatened &amp; Endangered Species Takings permit.</p> <p>1. Does your project involve cutting down trees larger than 5 inches in diameter in any of the following towns? Addison, Arlington, Benson, Brandon, Bridport, Bristol, Charlotte, Cornwall, Danby, Dorset, Fair Haven, Ferrisburgh, Hinesburg, Manchester, Middlebury, Monkton, New Haven, Orwell, Panton, Pawlet, Pittsford, Rupert, Salisbury, Sandgate, Shoreham, Starksboro, St. George, Sudbury, Sunderland, Vergennes, Waltham, West Haven, Weybridge, Whiting</p>	<p>Yes <input type="radio"/> No <input checked="" type="radio"/></p>

<sup>14</sup> To view the Wetland Screening Tool introduction video, see <https://youtu.be/6lv5en0AB1o>

<b>2. Is the project site within 1 mile of a mapped<sup>15</sup> Significant Natural Community or Rare, Threatened, or Endangered Species?</b>	Yes <input type="radio"/> No <input checked="" type="radio"/>
If <b>yes</b> to either of the above questions, connect with the VT Fish and Wildlife department (everett.marshall@vermont.gov 802-371-7333) to discuss your project and any necessary permitting.  <b>Regulatory Point of Contact Name/Position:</b> Everett Marshall /Natural Heritage Information Manager	
<b>VI. Stormwater</b>	
<b>1. Will the project disturb more than an acre of land during construction, add or redevelop impervious surface, create new development or <a href="#">otherwise require a Stormwater permit?</a></b>	Yes <input checked="" type="radio"/> No <input type="radio"/>
If <b>yes</b> , forward to the appropriate <a href="#">Stormwater specialist</a> to ensure necessary permitting. Use the <a href="#">Water Quality Project Screening Tool</a> to find the Stormwater specialist for your project's region.  <b>Regulatory Point of Contact Name/Position:</b> Ashley Preston (ashley.preston@vermont.gov)/Operational Permit Reviewer	
<b>VII. Solid Waste</b>	
<b>2. Will you be creating any debris (including construction and demolition waste, stumps, brush, untreated wood, concrete, masonry, and mortar) with your project that you intend to bury on site?<sup>16</sup></b>	Yes <input type="radio"/> No <input checked="" type="radio"/>
If yes, connect with the Waste Management & Prevention Division (dennis.fekert@vermont.gov 802-522-0195) to discuss your project and any necessary permitting.  <b>Regulatory Point of Contact Name/Position:</b>	
Provide below or attach a narrative summary of Table 4 findings. Please include: <ol style="list-style-type: none"> <li>Which permits or permit amendment are needed or might be needed?</li> <li>What type might be needed? (e.g. a general or individual permit)?</li> <li>What concerns were voiced by permitting staff?</li> <li>How will the proposed scope of work address these concerns?</li> </ol>	
Is the project, as proposed, reasonably considered permit-able by all applicable	Yes <input checked="" type="radio"/> No <input type="radio"/>

<sup>15</sup> Find both of these layers on the ANR Atlas under Atlas Layers/Fish and Wildlife. Use the Measurement tool to 1) Plot Coordinates for your project 2) select the coordinates from the left panel 3) select the Radius Tool 4) click on your project location 5) Indicate 1 mile distance 6) look for overlap with either of these mapped layers.

<sup>16</sup> If your project will result in the transfer and disposal of debris (including construction and demolition waste, stumps, brush, untreated wood, concrete, masonry and mortar), you do not need a permit from this office as long as you hire a [licensed solid waste hauler](#) and bring the material to a certified facility.

ANR permitting programs? (Answer must be Yes to continue)	
--	--

### Step 5: Conduct Eligibility Criteria #5-8 Screenings

Table 5A. Eligibility Criteria 5-8	
<b>Landowner and Operation and Maintenance Responsible Party Support.</b> Project identifies and demonstrates commitment from a qualified and willing operation and maintenance responsible party. Project demonstrates landowner support for the proposed project phase.  (Answer must be YES to proceed)	Yes <input checked="" type="radio"/> No <input type="radio"/>
<b>Budget.</b> Project budget includes ineligible expenses. (Answer must be NO to proceed)	Yes <input type="radio"/> No <input checked="" type="radio"/>
<b>Leveraging.</b> Proposed leveraging meets required leveraging levels (if applicable), meets the definition of leveraging, and comes from eligible sources (Answer must be YES or N/A to proceed)	Yes <input type="radio"/> No <input type="radio"/> N/A <input checked="" type="radio"/>
<b>Funding Program Specific Eligibility.</b> Project meets additional funding program eligibility requirements*. Please list applicable funding program below:  LCPC/Town of Wolcott has applied for the below other two grants for this project, but grant rounds were highly competitive and funding was not awarded. VEM Hazard Mitigation Grant Program ACCD Community Development Block Grant-DR <span style="float: right;">+</span> (Answer must be YES to proceed) *If Water Quality Restoration Formula Grant, complete Step 6 below	Yes <input checked="" type="radio"/> No <input type="radio"/>

### Step 6: Screening Projects on Agricultural Lands (Water Quality Restoration Formula Grants Only)

For Water Quality Restoration Formula Grant projects, please complete the following information as part of your Funding Program Specific Eligibility Screening (Criteria 8). Please note this must be completed for all projects located on agricultural lands regardless of project type. See [CWIP Project Types Table](#) for eligible project types.

Table 6A. Screening Projects on Agricultural Lands	
1. Is the proposed project located on a <a href="#">jurisdictional farm operation</a> <sup>17</sup> ?  Complete a preliminary review to	<input type="radio"/> Yes - Proceed to next question below.

<sup>17</sup> Jurisdictional farm operations are required to meet Vermont’s Required Agricultural Practices (RAPs).

<p>determine if it is a <a href="#">jurisdictional farm operation</a>, and any case that requires consultation with AAFM will occur via the <a href="#">farm determination</a> process. Please note this form must be submitted by the farm operation/landowner seeking the determination.</p>	<p><input checked="" type="radio"/> <b>No<sup>18</sup></b> - There is no additional requirements related to agricultural review for these projects.</p>								
<p><b>2. Is the proposed project an agricultural project?</b></p> <p>Examples of agricultural projects include but are not limited to Production Area Practices – (e.g. Waste Storage Facilities, Heavy Use Area, Diversion) Fence, Livestock Exclusion, Filter Strip, Cover Crop, Reduced Tillage, Manure Injection, Rotational Grazing. Please note this is not an exhaustive list of all agricultural practices.</p>	<p><input type="radio"/> <b>Yes</b> - Agricultural Projects on jurisdictional farms are not an eligible project type. You can provide a referral to an applicable state or federal agricultural <a href="#">assistance program</a>, or a local organization.</p> <p><input checked="" type="radio"/> <b>No</b>- The natural resource, innovative, or other project type will require an agricultural project review and approval from the Vermont Agency of Agriculture, Food and Markets (VAAFAM) to ensure a consistent approach on farms statewide that follows rules, regulations, and laws in place. Please follow Steps 1 &amp; 2 below.</p> <p><b>Step 1</b>- Please submit a detailed description of the project, project site, project details, landowner, farm operation, and any other relevant information to VAAFAM at <a href="mailto:AGR.WaterQuality@Vermont.gov">AGR.WaterQuality@Vermont.gov</a> .</p> <p><b>Step 2</b>- Once you complete this Agricultural Project Review, please allow 30 days for a response. Once that response has been received, please include a summary of the response in the next section.</p>								
<p><b>Agricultural Project Review Status &amp; Summary:</b></p>									
<table border="1"> <thead> <tr> <th>Check as Applicable</th> <th>Status</th> </tr> </thead> <tbody> <tr> <td><input type="checkbox"/></td> <td>Submitted/ Pending</td> </tr> <tr> <td><input type="checkbox"/></td> <td>Approved</td> </tr> <tr> <td><input type="checkbox"/></td> <td>Denied</td> </tr> </tbody> </table>	Check as Applicable	Status	<input type="checkbox"/>	Submitted/ Pending	<input type="checkbox"/>	Approved	<input type="checkbox"/>	Denied	
Check as Applicable	Status								
<input type="checkbox"/>	Submitted/ Pending								
<input type="checkbox"/>	Approved								
<input type="checkbox"/>	Denied								

<sup>18</sup> Note CWIP’s Agricultural Pollution Prevention project type eligibility is limited to land where owner or operator is not a jurisdictional farm (i.e., not required to meet the Required Agricultural Practices (RAPs)). As such, projects that meet the definition of the Agricultural Pollution Prevention project type in the [Appendix B. Project Types Table](#) are not subject to review by VAAFAM.

Updated: 12/2/2022 2:44:00 PM

Please include a summary of the response here:

Please note that it is expected that all projects with the status "submitted/pending" will be "approved" prior to a project approval for funding.



### **Brief Description of Problem Being Addressed:**

This section along North Wolcott Road has been repeatedly damaged during flooding events causing streambank erosion. The Wild Branch stream channel along this stretch has migrated between 50-100ft feet between 2020 and the end of 2023. Since 1995 the northern project section of the Wild Branch channel migrated 310ft (see “2082 N Wolcott - Haders - Erosion Over Time” attached), meanwhile in the southern project section the stream channel has moved 260ft (see “1635 N Wolcott Erosion - Schoolcraft Over Time” attached). A significant amount of this channel migration took place during the following flooding events: the 2018 ice jam and flood, the Halloween Storm of 2019, the July 2023 flood, and December 2023 flood. The most notable damage within the proposed project area was during the January 2018 ice jam. The ice jam and flooding caused a complete road washout and took out a utility pole near address 2082 North Wolcott Road. The North Wolcott Road was closed in this location for two weeks following the 2018 ice jam. The cost of repairs from the 2018 ice jam storm cost \$180,186.09. The Town received an Emergency Relief Grant from Vermont Agency of Transportation to cover \$162,167.48 of the repair cost that year. See site photos attached to this application.

The Wild Branch stream channel is currently undermining North Wolcott Road. The Town installed limited riprap as a temporary fix to protect the road and nearby homes, but without further stabilization, North Wolcott Road will continue to be undermined. North Wolcott Road is a Class 2 town highway that connects two state highways (VT-Route 14 and Route 15) and is heavily traveled by commuters and truck traffic. The Lamoille County Planning Commission conducted three traffic counts on North Wolcott Road in 2023 capturing an average daily traffic volume of nearly 2,000 vehicles per day that are at risk of being re-routed with long detours.

The Town of Wolcott anticipates an increase in traffic on North Wolcott Road north of the Gulf Road, due to a slope failure between VT Route 15 and Gulf Road. In June 2024, the State Geologist evaluated a slope failure near 696 North Wolcott Road and classified it as an “imminent threat”. The property owner has since moved out and is in the process of a buyout. This downstream slope failure poses structural risk to North Wolcott Road and may force the

Town to temporarily close that section of the North Wolcott Road. This would direct more traffic up Gulf Road and further north up North Wolcott Road including by the proposed project area.

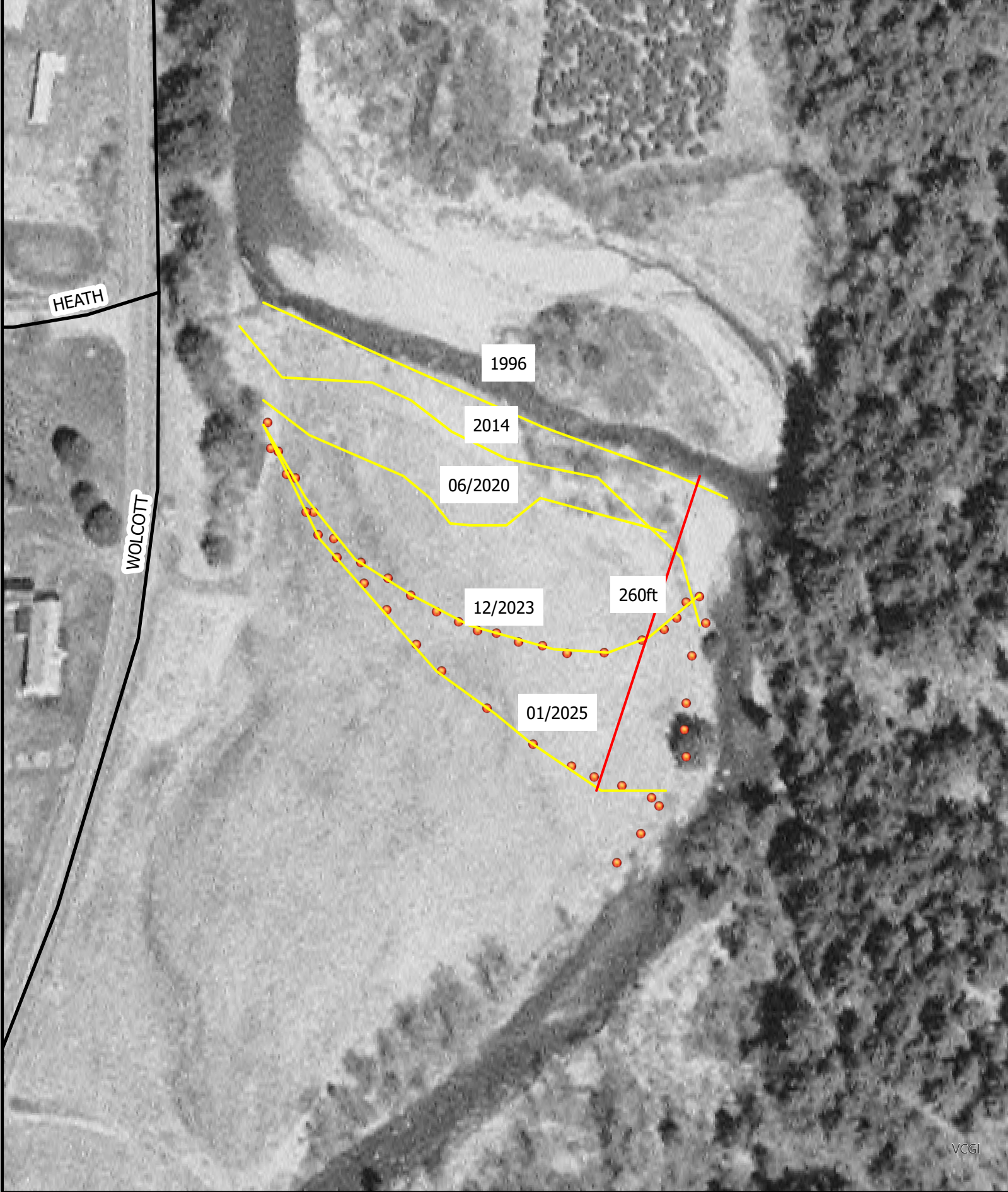
### **Project History:**

This location along North Wolcott Road near Heath Road was evaluated for flood mitigation alternatives in 2020 by SLR International Corporation as part of a North Wolcott Road Flood Mitigation Evaluation. Since then, SLR has prepared a conceptual design for floodplain restoration and streambank stabilization alternatives. The two nearby properties to this location currently hold a river corridor easement and have had past CREP stream buffers established. A prior site visit including SLR, Vermont River Conservancy (VRC), VT Department of Environmental Conservation (DEC), Town of Wolcott, and the Lamoille County Planning Commission (LCPC) was held to explore this idea involving 7.8 acres of proposed floodplain restoration including floodplain benching, lowering the floodplain to improve floodplain connectivity and increase flood storage capacity, replanting/enhancing the 50ft stream buffer, and establishing a more naturalized streambank stabilization (some riprap with vegetation cover, enhanced stream buffer), and an engineered log jam at the southern sharp bend of the Wild Branch in this location (see attached concept design).

The Town of Wolcott and LCPC have had past conversations with the property owner to the north regarding the need for flood mitigation along this stretch of North Wolcott Road. On January 15<sup>th</sup>, 2025, LCPC organized a site visit with the landowners, the Town of Wolcott, VRC, and the Vermont Agency of Agriculture CREP Team (see site visit notes attached to EHP form). The landowners have continued to express interest in this project and taking a floodplain restoration approach (see attached letters of support). Additionally, the 2020 Wolcott, Vermont Local Hazard Mitigation Plan prioritizes exploring flood mitigation projects along the Wild Branch as a key mitigation action. In late March of 2025, the Town of Wolcott, LCPC, and SLR had follow-up communications with VT DEC, VEM and VRC regarding the proposed engineered log jam and compatibility with the River Corridor easement on Amy Haders and Roy Schoolcraft's property. A meeting was held to discuss this on March 25, 2025. SLR revised the conceptual plans to accommodate feedback and reduce the length of the proposed log jam to allow more room for the river to meander per the requirements of the River Corridor easement (see site visit notes attached to EHP form).

### **Project Goal:**

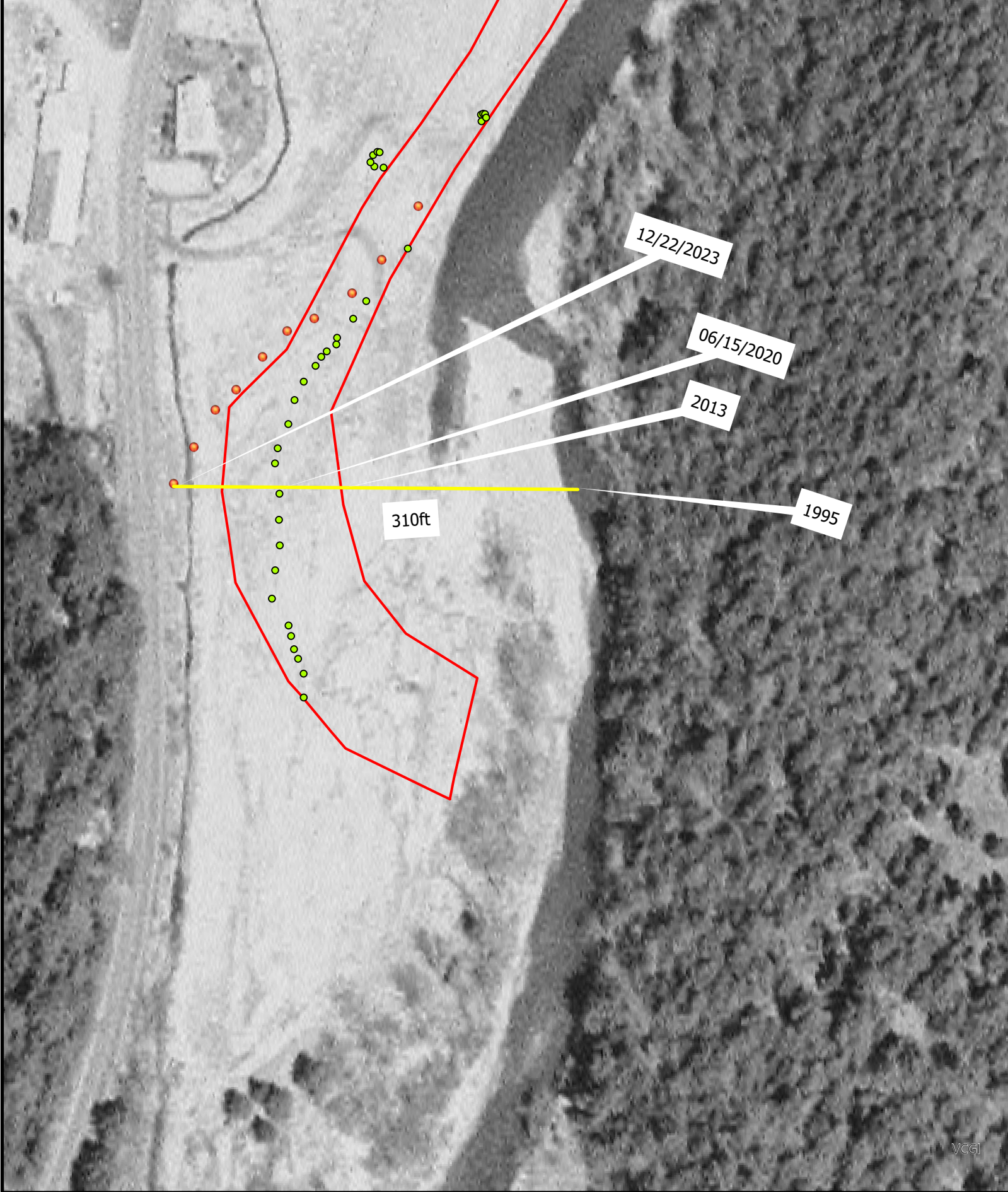
Protect North Wolcott Road, a key arterial in this rural community, from further destabilization, expensive repairs, and long detours. It aims to do this by building on prior engineering evaluation, evaluating the site based on new conditions, designing and implementing wide-scale floodplain restoration and streambank stabilization practices to protect North Wolcott Road and nearby properties from increasing flood risk.



Schoolcraft Streambank Erosion  
1996 Ortho Imagery



1 inch equals 1,200 feet



VCGI

- Bens Waypoints
- ▭ Existing CREP Contract
- 06 15 20 Jason B, Hutchins, Rankin, Hader, Schoolcraft



1 inch equals 1,200 feet

Lamoille County Planning Commission  
 North Wolcott Road Floodplain Restoration

Gray cells auto-calculate, do not edit. Enter white cells only.

**SUB-GRANT ADMINISTRATION AND PROJECT MANAGEMENT EXPENSES**

Personnel (Name, Title)	Tasks/Responsibilities	Hours	Hourly Rate (including Fringe)	Total Salary Expense	Match*	Amount requested
Meghan Rodier, Regional Planner	Meghan will provide grant management oversight/ project coordination.	54	\$37.63	\$2,032.02	Do not write in this space.	
			\$0.00	\$0.00		
		0	\$0.00	\$0.00		
		0	\$0.00	\$0.00		
<b>Personnel Subtotal</b>				<b>\$2,032.02</b>		

Indirect Costs	Indirect Rate	Cost related to Indirect rate	Total Indirect cost	Match*	Amount Requested
	99%	\$2,032.02	\$2,015.76	Do not write in this space	
<b>Indirect Subtotal</b>			<b>\$2,015.76</b>		

Anticipated Travel	Purpose	Miles	Mileage Rate	Total Travel Expense	Match*	Amount Requested
Site Visits/Community Meetings	Travel to site visits (3), and meetings (3) with the community/project partners.	96.0	\$0.725	\$69.60	Do not write in this space.	
		0	\$0.00	\$0.00		
<b>Travel Subtotal</b>				<b>\$69.60</b>		

NA						
Supplies/Other	Description/Use	# of Units	Unit Cost	Total Supplies Expense	Match*	Amount Requested
		0	\$0.00	\$0.00	Do not write in this space.	
		0	\$0.00	\$0.00		
		0	\$0.00	\$0.00		
<b>Supplies &amp; Other Subtotal</b>				<b>\$0.00</b>		

**TOTAL GRANTEE ADMINISTRATION AND PROJECT MANAGEMENT EXPENSES**

**\$4,117.38**      **\$4,117.38**

\* Enter match amount for Total Grantee Expenses in F26 above. Must be 50% for MS4 projects.

**PROJECT IMPLEMENTATION**

Contractual/Construction	Description/Use (attach any quotes from consultants/contractors)	# of Units	Unit Cost	Total Contract. Expense	Match*	Amount Requested
Preliminary (30%) Design Planning	Preliminary Design plans and cost estimates for the North Wolcott Road floodplain restoration alternatives. This will include a summary of potential permits required. See cost estimate from SLR attached.	1	\$25,000.00	\$25,000.00	Do not write in this space.	
ARA	Archaeological Resources Assessment as deemed appropriate by the VDHP. This includes hiring an archaeologist and contractor to dig test pits as needed.	1	\$2,500.00	\$2,500.00		
		0	\$0.00	\$0.00		
<b>Contractual Subtotal</b>				<b>\$27,500.00</b>		

Equipment Rental	Description/Use	# of Units	Unit Cost	Total Contract. Expense	Match*	Amount Requested
		0	\$0.00	\$0.00	Do not write in this space.	
		0	\$0.00	\$0.00		
		0	\$0.00	\$0.00		
<b>Rental Subtotal</b>				<b>\$0.00</b>		

Supplies/Other	Description/Use	# of Units	Unit Cost	Total Supplies Expense	Match*	Amount Requested
Printing	Printing cost (printing design plans for meetings/site visits etc.)	20	\$0.50	\$10.00	Do not write in this space.	
		0	\$0.00	\$0.00		
		0	\$0.00	\$0.00		
		0	\$0.00	\$0.00		
<b>Supplies &amp; Other Subtotal</b>				<b>\$10.00</b>		

**TOTAL PROJECT IMPLEMENTATION**

**\$27,510.00**      **\$27,510.00**

\* Enter match amount for Total Project Implementation in F47 above. Must be 50% for MS4 projects.

**Project Total**      **\$31,627.38**      **\$0.00**      **\$31,627.38**

Notes:



**State of Vermont**  
**Agency of Transportation**  
**Finance & Administration Division**  
**Audit Section**  
219 North Main Street  
Barre, VT 05641

April 29, 2025

Tasha Wallis, Executive Director  
Lamoille County Planning Commission  
PO Box 1637  
Morrisville, VT 05661

Subject: Regarding Indirect Cost Recovery Rate for FY26

Dear Ms. Wallis:

As you know, your regional planning commission (RPC) is a political subdivision of the state, considered a local government whose indirect rate proposal must be prepared in compliance with 2 CFR Part 200. Vermont Agency of Transportation Memorandum of Understanding MU0378, agreement executed July 1, 2023, details the conditions for preparation, submittal, and approval of RPC indirect cost rates.

I have reviewed your proposed indirect cost rate of **99.20%** for July 1, 2025 through June 30, 2026 based on Lamoille County Planning Commission's audited costs for FY2024. You have certified to us, as required in the MOU, the inputs and calculations used to arrive at this rate are to the best of your knowledge compliant, accurate, and true. Based upon our review and your certification, we accept this rate for conducting business with the Vermont Agency of Transportation. Please note that we may adjust this rate if we obtain additional information that warrants it. We reserve the right to audit this rate or seek further information from the independent auditors pertaining to the procedures they performed.

We look forward to continuing to work with you and your colleagues at Lamoille County Planning Commission.

Sincerely,

DocuSigned by:

*Kara Mayo*

F398B30743C545B...  
Kara Mayo

AOT Audit Specialist II  
[kara.j.mayo@vermont.gov](mailto:kara.j.mayo@vermont.gov)

copy: Nicole Sancibrian, CPA PLLC



**OPINION OF PROBABLE PROJECT COST - 10% DESIGN**

**Wild Branch Near Heath Road Flood Mitigation**

**Wolcott, Vermont**

July 2, 2025

SLR # 12911.00015



Description	Unit	Quantity	Unit Price (\$)	Amount (\$)
<b>SITE PREPARATION</b>				
MOBILIZATION	LS	1	20,000	20,000
SEDIMENT AND EROSION CONTROLS	LS	1	20,000	20,000
TEMPORARY CONSTRUCTION FENCING	LS	1	5,000	5,000
CONSTRUCTION STAKING/SURVEY	LS	1	5,000	5,000
UTILITY WORK	LS	1	15,000	15,000
<b>SITE WORK</b>				
RESHAPE BANK ALONG ROAD (NORTH)	LS	1	10,000	10,000
FURNISH AND INSTALL STONE ARMOR ALONG ROAD	CY	600	60	36,000
LIVE STAKES FOR JOINT PLANTINGS ALONG ROAD	EA	700	10	7,000
INSTALL BALLASTED ENGINEERED LOG JAM	LF	100	400	40,000
STONE LINE DITCH	LF	100	60	6,000
FLOODPLAIN RESTORATION (EXCAVATE AND HAUL)	CY	15,000	30	450,000
FLOOD CHUTE CLEANOUT AND SHAPING	LS	1	15,000	15,000
RESHAPE BANK ALONG ROAD (SOUTH)	LS	1	10,000	10,000
FURNISH AND INSTALL STONE ARMOR ALONG ROAD	CY	600	60	36,000
<b>RESTORATION OF SITE</b>				
RESTORATION OF ACCESS & STAGING AREA	LS	1	10,000	10,000
SEED AND MULCH	ACRE	4.0	4,000	16,000
FUTURE RIPARIAN TREES AND VEGETATION	LS	1	50,000	50,000
VEGETATION MAINTENANCE	LS	1	10,000	10,000
<b>CONSTRUCTION SUBTOTAL (PHASE 2)</b>				<b>\$ 761,000</b>
<b>PRELIMINARY DESIGN (PHASE 1)</b>				<b>\$ 25,000</b>
FINAL DESIGN (PHASE 1)				\$ 55,000
PERMITTING (PHASE 1)				\$ 15,000
PHASE 1 CONTINGENCY (5%)				\$ 4,750
BID PHASE SERVICES (PHASE 2)				\$ 10,000
CONSTRUCTION PHASE SERVICES (PHASE 2)				\$ 40,000
PHASE 2 CONTINGENCY (5%)				\$ 40,550
<b>TOTAL</b>				<b>\$ 951,300</b>

## Project Schedule

### Preliminary Design (30%)- North Wolcott Road Floodplain Restoration along the Wild Branch near Heath Road

*Please see below a proposed project schedule for the preliminary design phase based on anticipated milestones. This schedule is subject to change based on when this project receives funding.*

<b>Milestone</b>	<b>Milestone Completion Timeline</b>
RFP issued and contractor selected	July 1 <sup>st</sup> , 2026
Ownership of site(s) identified/confirmed	Already confirmed
Identified site/design considerations and permitting needs; pre-permitting meeting	September 1 <sup>st</sup> 2026
Select Consultant for Archeological Resource Assessment	July 1 <sup>st</sup> , 2026
Complete Archeological Resource Assessment	November 1 <sup>st</sup> , 2026
30% design complete	July 1 <sup>st</sup> , 2027
Final reporting/Invoicing submitted and project complete	September 1 <sup>st</sup> , 2027

# FFI Functioning Floodplain Initiative



**Selected Item Details**

River Corridor Connectivity  
 FFI ID: 14\_T05\_2\_C00  
 SGAT ID: 14\_T05-

Add to Project Screening

? [Share] [Close] Validate & Run Calculations

Project Screening Calculation Inputs

Enter Proposed Information for Potential Stream Stability Projects Below:

## Floodplain Connectivity (Lateral-Vertical) and Storage Crediting

Proposed River Corridor and Floodplain Projects:

FFI Id: 14\_T06\_1\_C00

Plant River Corridor

Plant 50-Foot Riparian Area

Plant Floodplain

FFI Id: 14\_T05\_3\_C00

Plant River Corridor

Plant Floodplain

Plant 50-Foot Riparian Area

FFI Id: 14\_T05\_2\_C00

Plant 50-Foot Riparian Area

Plant Floodplain

Plant River Corridor

Stream Stability (Floodplains) Storage

River Corridor ID	Existing Reach Connectivity	Project Area Connectivity	Project area in corridor (acres)	Project area outside corridor, within <u>HAND</u> floodplain (acres)	Project area outside corridor, outside <u>HAND</u> floodplain (acres)
14_T05_2_C00 Existing	Medium	-	-	-	-
Proposed Site Inputs	Low	Medium	.5	-	-
Add New Row					
14_T05_3_C00 Existing	Low	-	-	-	-
Proposed Site Inputs	Low	High	5.4	-	-
Add New Row					
14_T06_1_C00 Existing	Low	-	-	-	-
Proposed Site Inputs	Low	High	1.9	-	-
Add New Row					

# FFI Functioning Floodplain Initiative



**Selected Item Details**

River Corridor Connectivity  
 FFI ID: 14\_T05-2\_C00  
 SGAT ID: 14\_T05-

[Add to Project Screening](#)

Project Screening Calculate Inputs \$

Water Quality Benefit Floodplain Resiliency Benefit

### Estimated Phosphorus Credit for Stream Stability and Storage

### Stream Stability and Storage Credit Summary

SubUnit(s) IDs: 14\_T06-1\_C00, 14\_T05-3\_C00, 14\_T05-2\_C00  
 Town: WOLCOTT  
 Rivers Projects Included: Plant River Corridor, Plant 50 Foot Riparian Area, Plant Floodplain  
 Streams Projects Included:  
 Stream Names:  
 Project Area (acres): 0

Annual Credit (kg/yr)	
<b>Floodplain Connectivity (Lateral - Vertical)</b>	
Stream Stability	0.0
Storage	34.8
<b>Stream Connectivity (Longitudinal - Temporal)</b>	
Stream Stability	0.0
<b>TOTAL</b>	<b>34.8</b>

▼ Floodplain Connectivity (Lateral-Vertical) and Storage Crediting

#### Floodplain Connectivity (Lateral-Vertical)

River Corridor ID	Project Connectivity Credit Score	Existing Subunit Floodplain/Corridor Connectivity Score	Proposed Lateral Credit Score	Proposed Vertical Credit Score	Proposed Subunit Floodplain/Connectivity Score	Lateral P Reduction Credit (kg/yr)	Vertical P Reduction Credit (kg/yr)	Total P Reduction Credit (kg/yr)	Total P Reduction Credit (lb/yr)	Annual Storage P Reduction (kg/yr)	Year 1 Additional Storage P Reduction (kg)
14_T06-1_C00	0	59.47	0	0	59.47	0	0	0	0	8.62	8.62
14_T05-3_C00	0	73.97	0	0	73.97	0	0	0	0	24.49	24.49
14_T05-2_C00	0	78.91	0	0	78.91	0	0	0	0	1.7	1.7

**Vermont Division for Historic Preservation**  
***Project Review Form***  
**DEC Clean Water Initiative Program**

This form is to be used for both the Preliminary and Final Project Review for clean water projects funded by the Department of Environmental Conservation (DEC) Clean Water Initiative Program (CWIP). See applicable sections below.

### Preliminary Project Review Section

To start the consultation process for CWIP-funded Clean Water Projects, please complete this form and submit it to the Vermont Division for Historic Preservation (VDHP) at [ACCD.projectreview@vermont.gov](mailto:ACCD.projectreview@vermont.gov) with the information requested below. This Preliminary Project Review form once completed and signed by VDHP should be submitted as a project deliverable.

This is for non-exempt CWIP project types or conditionally exempt that have failed to meet the project qualifications. Exempt project types should NOT submit this form. Please refer to the CWIP Funding Policy for a listing of exempt and conditionally exempt project types. The CWIP Funding Policy can be found here: <https://dec.vermont.gov/water-investment/cwi/grants>

For questions on architectural resources, archaeology, and below-ground resources, please contact Scott Dillon at (802) 272-7358 or [scott.dillon@vermont.gov](mailto:scott.dillon@vermont.gov).

**1. Contact information:**

- a. Contact name:
- b. Email address:
- c. Phone number:

**2. WPD Project Title:**

**3. WPD – ID:**

**4. Town Project is Located In:**

**5. Project site map:** Please attach a project site map. An annotated Google map or [ANR Atlas](#) map will suffice but professional design plans indicating location are also welcome. An example image is provided below. Site map should outline:

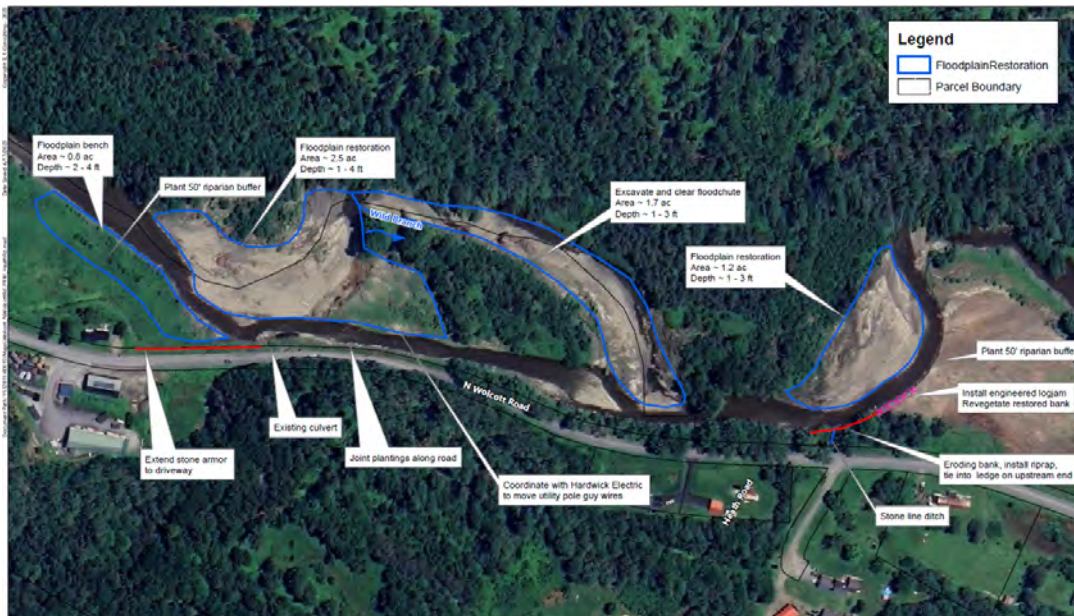
- a. Project Area of Potential Effects (APE)<sup>1</sup> with clearly marked GPS coordinates for project boundaries.

<sup>1</sup> The project APE or “area of potential effects” means the geographic area or areas within which an undertaking may directly or indirectly cause alterations in the character or use of historic properties, if any such properties exist. The

§106 Project Review Form

For Clean Water Projects funded by the DEC Clean Water Initiative Program

- b. Proposed ground disturbance locations. Note that stream bank regrading is considered ground disturbance.



6. Project information:

- a. Select CWIP project type from drop down (if not listed, it's categorically exempt)
  - i.
- b. Please provide a short description of the project's proposed scope of work (CWIP Preliminary Design Report is acceptable instead)

c. Are there other Agencies or funding partners involved?: Yes No

i. If yes, which?

d. Does the project involves ground disturbance?: Yes No

i. If yes, please describe type and extent of ground disturbance.

Specifically,

1. Whether disturbance will be performed by hand or heavy machinery,
2. The estimated total acreage and maximum depth of disturbance, and

APE is influenced by the scale and nature of an undertaking and may be different from different kinds of effects caused by the undertaking [36 C.F.R. § 800.16(d)]. When determining a project's APE remember to consider/include extent of restoration footprint; new, upgraded or existing access or haul roads; staging, storage, and stockpile areas; disposal sites or waste areas; borrow areas and other source locations for fill material; and areas impacted by drainage diversions or mechanical tree clearing and similar landscape alterations.

§106 Project Review Form

For Clean Water Projects funded by the DEC Clean Water Initiative Program

3. The history of prior natural caused or man-made ground disturbance to the site (if known):

e. Will the project cause direct or indirect impact/alterations or disturbance to any building or structure more than 50 years old (including dams, culverts, and bridges) or to any federally-listed historic building or structure?

Yes                      No                      Unknown

i. **If yes or unknown**, provide any known details on the buildings or structure(s), location/condition and extent of proposed impact or disturbance. Please include whether the resource is listed in the National Register of Historic Places if known:

f. Is the project APE located within, intersect with, or adjacent to/immediately abutting to a State- or National Register listed historic district, Designated Downtown, or Village Center?

Yes                      No                      Unknown

*Email this form and supporting materials to [ACCD.ProjectReview@vermont.gov](mailto:ACCD.ProjectReview@vermont.gov)*

Please copy [scott.dillon@vermont.gov](mailto:scott.dillon@vermont.gov)

**TO BE COMPLETED BY VDHP:**

No Historic Properties/Sites Affected

No Historic Resource Present; or

No Effect on Historic Resource

Comments:

No Adverse Effect

Comments:

Historic Properties Affected

Potential for Historic Architectural Properties to be affected - a Qualified Architectural Historian/Historian\* will be required (\*please see list of consultants)

Determination of Eligibility required

Comments:

Potential for Archaeological Historic Properties to be affected - a Qualified Archaeological Consultant\* will be required (\*please see list of consultants)

Archaeological Resource Assessment (ARA) required

Phase 1 archeological investigation required

Comments:

**Vermont State Historic Preservation Office Preliminary Concurrence:**

X: \_\_\_\_\_

Date:

---

*§106 Project Review Form*

For Clean Water Projects funded by the DEC Clean Water Initiative Program

**Final Project Review Section**

To complete Final Project Review, re-submit this VDHP Project Review Form with the following additional elements included. Note that this should be added to the VDHP-signed version of the Preliminary Review Form so VDHP can reference their prior guidance on this project. This Final Project Review Form, once completed and signed by VDHP, should be submitted as a CWIP project deliverable.

1. Please provide a short description of any changes to the project’s proposed scope of work since the Preliminary Project Review was approved by VDHP:
  
2. Please attach:
  - a. Final (100%) Design Plans
  - b. Project narrative description of scope of work (CWIP Final Design Report will suffice)
  - c. Any historical resource assessments, or determination of eligibility forms
  - d. Any archaeological resource assessments, other archaeological reports, or end-of-field documents
  - e. Any Treatment Plans

*Email this form and supporting materials to [ACCD.ProjectReview@vermont.gov](mailto:ACCD.ProjectReview@vermont.gov)*

Please copy [scott.dillon@vermont.gov](mailto:scott.dillon@vermont.gov)

**TO BE COMPLETED BY VDHP:**

No Historic Properties Affected

No Historic Resource Present ; or

No Effect on Historic Resource Comments:

No Adverse Effect

Adverse Effect

Concur with Project Treatment Plan or other agreement docs executed

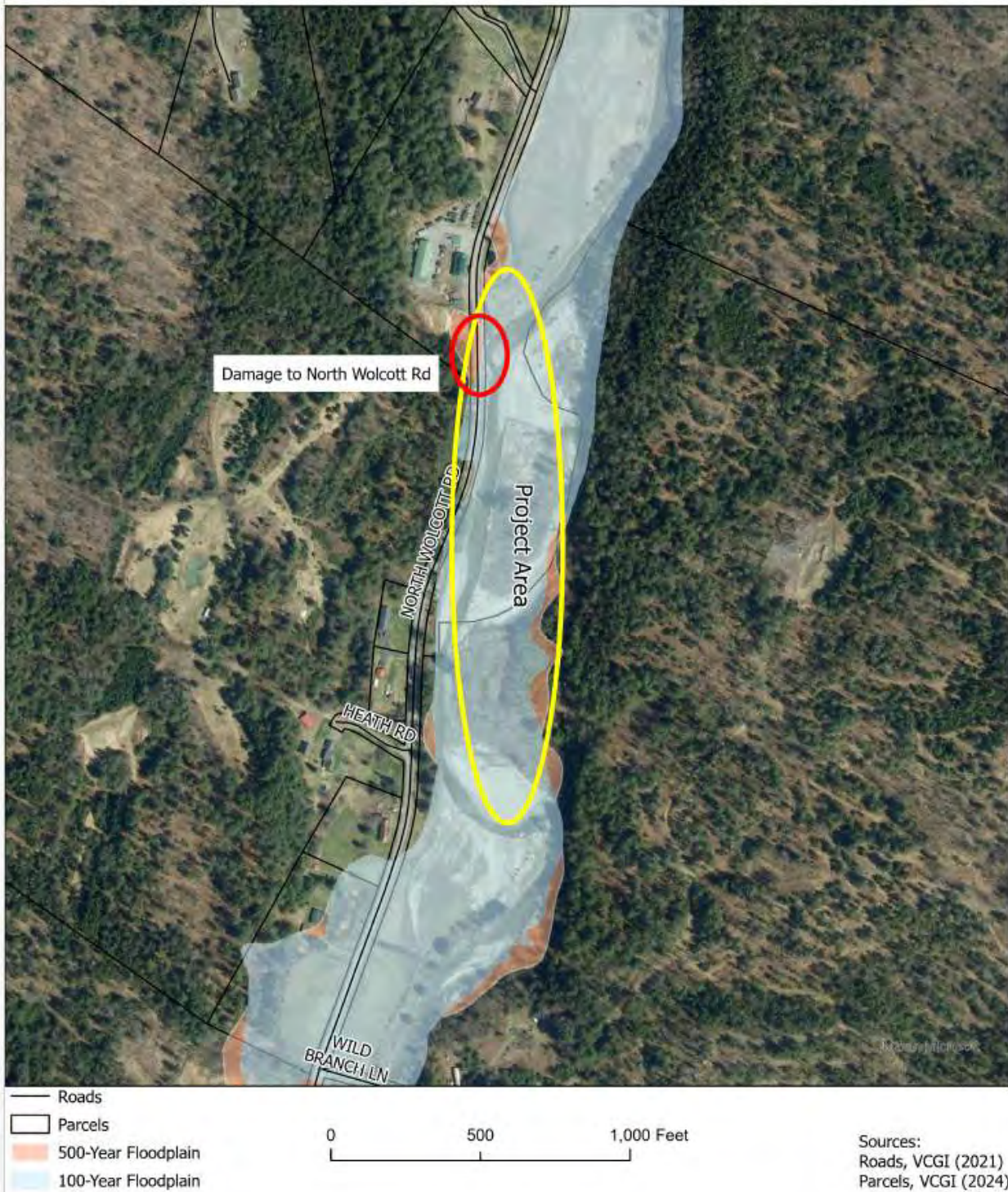
Comments:

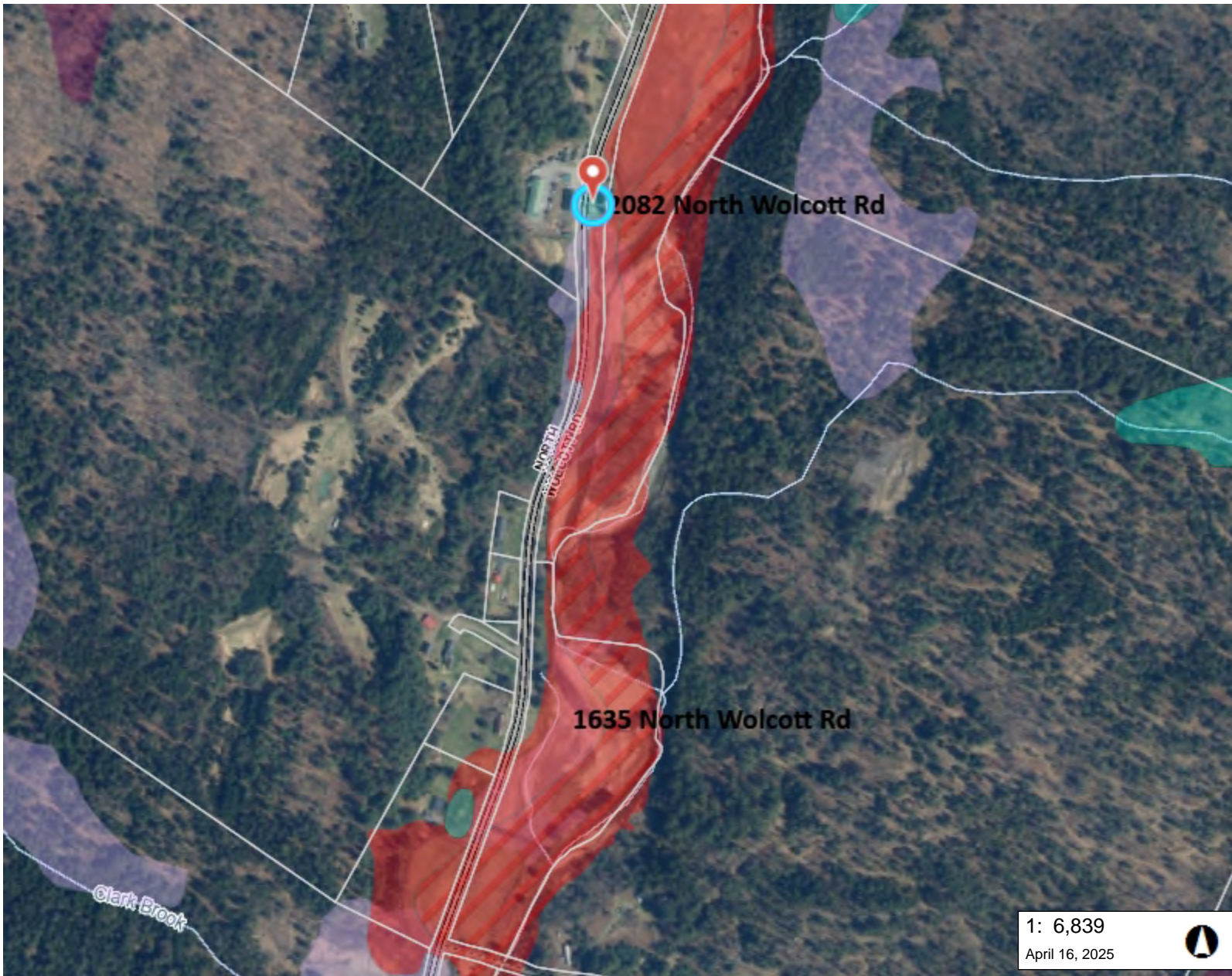
**Vermont State Historic Preservation Office Final Concurrence:**

X: \_\_\_\_\_

Date:

# North Wolcott Road Floodplain Restoration Project Area (Near Heath Rd)





**LEGEND**

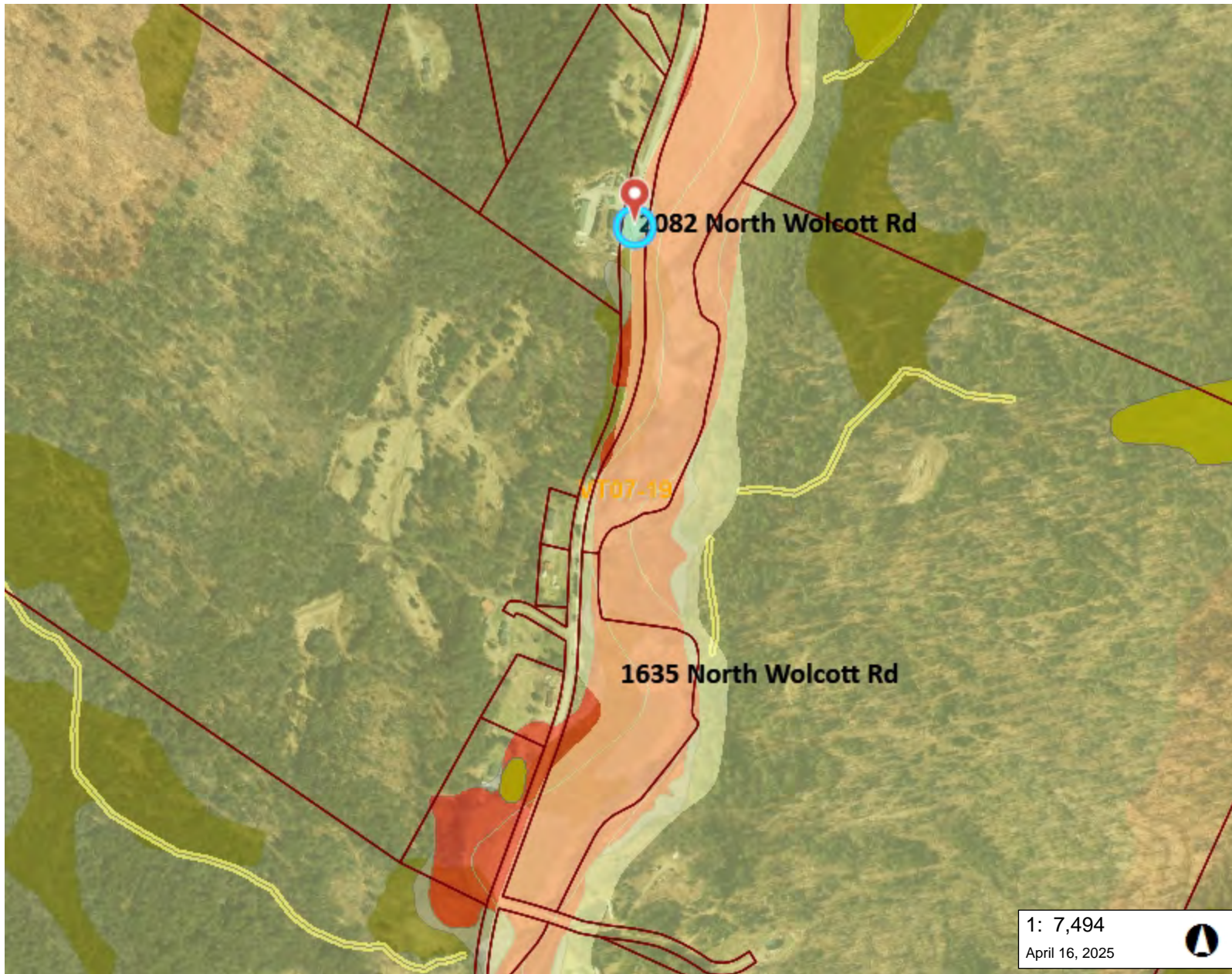
- Wetland
- Wetland Projects
- Wetlands - VSWI**
  - Class 1 Wetland
  - Class 2 Wetland
  - Buffer
- Wetlands - VSWI Advisory Lay
- Vermont Vernal Pool Atlas**
  - Confirmed
  - Potential
  - Probable
- VT List of Priority Rivers and S**
  - Part B (impaired TMDL not required)
  - Part C (stressed needs more assessment)
  - Part D (impaired with approved TMDL)
  - Part E (altered exotic species)
  - Part F (altered flow regulation)
  - Part G (channel alteration)
- VT List of Priority Lakes and P**
  - Part B (impaired TMDL not required)
  - Part C (stressed needs more assessment)
  - Part D (impaired with approved TMDL)
  - Part E (altered exotic species)
  - Part F (altered flow regulation)
- DFIRM Floodways
- Special Flood Hazard Areas (A Counties)**
  - AE (1-percent annual chance flood)
  - A (1-percent annual chance floodpl.)

1: 6,839  
April 16, 2025

347.0 0 174.00 347.0 Meters  
 WGS\_1984\_Web\_Mercator\_Auxiliary\_Sphere 1" = 570 Ft. 1cm = 68 Meters  
 © Vermont Agency of Natural Resources THIS MAP IS NOT TO BE USED FOR NAVIGATION

**DISCLAIMER:** This map is for general reference only. Data layers that appear on this map may or may not be accurate, current, or otherwise reliable. ANR and the State of Vermont make no representations of any kind, including but not limited to, the warranties of merchantability, or fitness for a particular use, nor are any such warranties to be implied with respect to the data on this map.

**IMPORTANT!:** The Wetlands Viewer is designed to help the public research wetland locations and features. Only a qualified wetland scientist may determine the absence or presence of a wetland and the boundaries. Not all wetlands are mapped. Wetlands not mapped on the Vermont Significant Wetland Inventory may still be considered significant.



### LEGEND

- Wetland - VSWI
  - Class 1 Wetland
  - Class 2 Wetland
  - Wetland Buffer
- Wetlands Advisory Layer
- River Main Stem Waterbodies
- WBID Watersheds
- River Corridors (Aug 27, 2019)
  - .5 - 2 sqmi.
  - .25-.5 sqmi.
- DFIRM Flood Hazard Areas (C FEMA-digitized data)
  - AE (1-percent annual chance flood)
  - A (1-percent annual chance floodpl.)
  - AO (1-percent annual chance zone feet)
  - 0.2-percent annual chance flood ha
- Soils - Hydric
- Parcels (standardized)
- ACT250 Permits
- Town Boundary
- Elevation (FT)
  - 0 - 500ft
  - 500 - 1000ft
  - 1000 - 1500ft
  - 1500 - 2000ft
  - 2000 - 2500ft
  - >2500ft

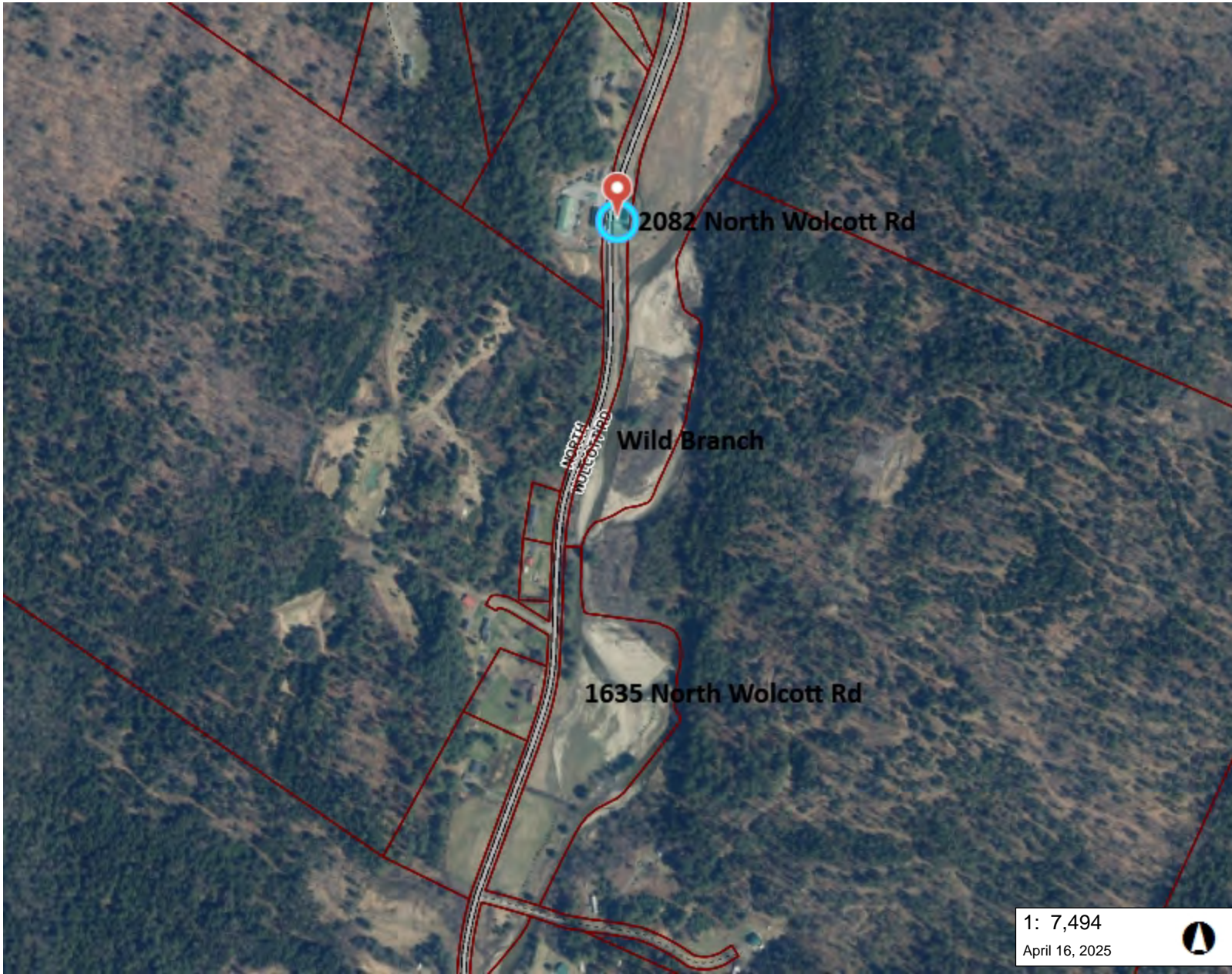
1: 7,494  
April 16, 2025

381.0 0 190.00 381.0 Meters  
 WGS\_1984\_Web\_Mercator\_Auxiliary\_Sphere 1" = 624 Ft. 1cm = 75 Meters  
 © Vermont Agency of Natural Resources THIS MAP IS NOT TO BE USED FOR NAVIGATION

DISCLAIMER: This map is for general reference only. Data layers that appear on this map may or may not be accurate, current, or otherwise reliable. ANR and the State of Vermont make no representations of any kind, including but not limited to, the warranties of merchantability, or fitness for a particular use, nor are any such warranties to be implied with respect to the data on this map.

### NOTES

Map created using ANR's Natural Resources Atlas



## LEGEND

- Rare Threatened and Endange
- RTE Animal
  - RTE Plant
  - Significant Natural Communitie
  - Parcels (standardized)
- Roads
- Interstate
  - US Highway; 1
  - State Highway
  - Town Highway (Class 1)
  - Town Highway (Class 2,3)
  - Town Highway (Class 4)
  - State Forest Trail
  - National Forest Trail
  - Legal Trail
  - Private Road/Driveway
  - Proposed Roads
- Town Boundary

1: 7,494  
April 16, 2025

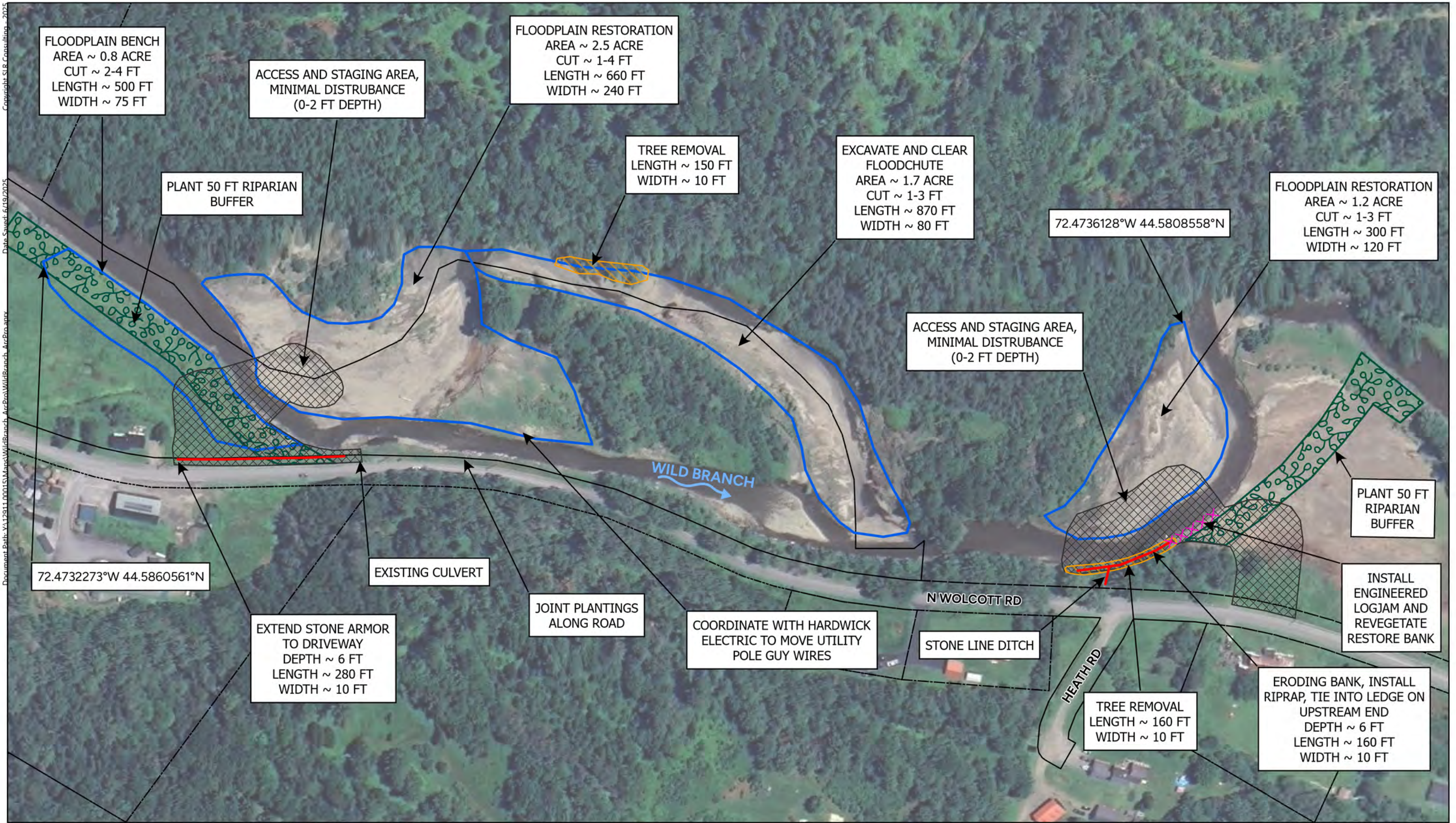


WGS\_1984\_Web\_Mercator\_Auxiliary\_Sphere 1" = 624 Ft. 1cm = 75 Meters  
© Vermont Agency of Natural Resources THIS MAP IS NOT TO BE USED FOR NAVIGATION

DISCLAIMER: This map is for general reference only. Data layers that appear on this map may or may not be accurate, current, or otherwise reliable. ANR and the State of Vermont make no representations of any kind, including but not limited to, the warranties of merchantability, or fitness for a particular use, nor are any such warranties to be implied with respect to the data on this map.

## NOTES

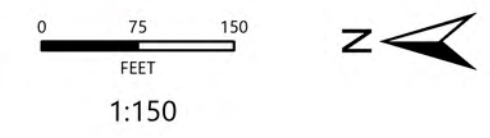
Map created using ANR's Natural Resources Atlas



PROJECT DISTURBANCE - WILD BRANCH NEAR HEATH ROAD

NORTH WOLCOTT ROAD EVALUATION  
 LAMOILLE COUNTY PLANNING COMMISSION

- Floodplain Restoration
- Parcel Boundary
- Access and Staging
- Tree Removal
- 50 FT Riparian Buffer



**SLR**  
 1 SOUTH MAIN ST  
 WATERBURY, VT 05676  
 802.882.8335

# North Wolcott Road Floodplain Restoration

Photo Tour

Wild Branch  
undermining  
North Wolcott  
Road near  
Heath Road



Wild Branch  
Floodplain  
across  
Heath Road



Schoolcraft's  
Field Across  
from 1635 N  
Wolcott Rd



Post  
December  
2023 Flood  
near 1635 N  
Wolcott Rd



Streambank  
south 2082  
North  
Wolcott  
Road



River Road  
conflict area  
near 2082  
North Wolcott  
Road



North  
Wolcott  
Road near  
2082



Floodplain  
Wild Branch  
near 2082  
North Wolcott  
Road



Wild Branch  
near 2082  
North  
Wolcott  
Road



Wild Branch  
Floodplain  
2082 North  
Wolcott  
Road



July 2023  
Flood North  
Wolcott  
Road



Post  
December  
2023 Flood  
North Wolcott  
Road



2018 Ice  
Jam/ Flood  
North  
Wolcott  
Road



Dean Pierce  
Senior Planner  
Lamoille Clean Water Service Provider  
Northwest Regional Planning Commission  
75 Fairfield Street, St. Albans, VT 05478  
802.582.3087

February 24, 2026

Re: Lamoille Clean Water Service Provider Grant Application: North Wolcott Road Floodplain Restoration Project

Dear Dean Pierce,

Hello, My name is Amy Haders,

I live at 2082 North Wolcott rd. I have many concerns about the river eating away at the roadside bank just south of my house.

The Town of Wolcott patched one area where the water was very close to getting under the road; but now the water hits beyond that point immediately downstream. The bank is loose and crumbly and with the next high water I will lose a lot of land. I'm worried about a mass amount of erosion; on the portion of my land where the river curves towards the road.

I dread the next heavy rain. The stream bank needs some attention soon to prevent a bigger project/ catastrophe as more water continues to rush toward it. Also, I fear losing my house which sits on a knoll not far from the river, is there a means to prevent this? I really don't want a FEMA buyout. This is all I have.

With some environmentally safe engineering, I might be able to hang onto my house. With some reinforcement next to the road and creating a soft angle at Schoolcraft's property, perhaps we can rectify the danger.

I've discussed options and troubleshooting with members of the town and county, I look forward to helping in any way I can. Thanks for your time and consideration.

Sincerely,

A handwritten signature in black ink, appearing to read 'Amy J Haders', with a long horizontal stroke extending to the right.

Amy J Haders

Landowner

Dean Pierce  
Senior Planner  
Lamoille Clean Water Service Provider  
Northwest Regional Planning Commission  
75 Fairfield Street, St. Albans, VT 05478  
802.582.3087

February 24, 2026

Re: Lamoille Clean Water Service Provider Grant Application: North Wolcott Road Floodplain Restoration Project

Dear Dean Pierce,

The land adjoining the Wild Branch has been in my families possession since the early 1900's. As a child and young adult I spent many days in and around the stream to fish, collect stones and observe the abundant wildlife. The Branch in the 1950's and 60's was much narrower with trees and vegetation hugging its shores and shading the water. I could catch my limit of brook, rainbow and brown trout. I could look over the edge of the logging bridge spanning the stream and see schools of very large suckers lazily facing upstream. The Wild Branch at that time was also the home to frogs, dace, minnows and crawdads that provided a food source to a variety of birds and mammals.

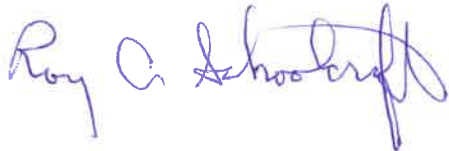
Back then there were a number of deep swimming holes that the locals often frequented to catch a trout or cool off on a hot summer day. Today there is little life left in the Wild Branch and far less wildlife being supported by it. The banks of the stream are eroded and barren, with no trees for shade. It is wide and broken with little depth to support aquatic life. The swimming holes are all gone, filled with eroded soil and flood debris. Because of these facts and to hopefully limit future damage to our lands, highways and bridges. I am pleased to support the Lamoille County Planning Commission's CWSP grant application for preliminary design of the North Wolcott Road Floodplain Restoration Project.

This area frequently experiences flash flooding along the Wild Branch and significant channel migration from fluvial erosion along the streambank. This stretch of North Wolcott Road and properties along the Wild Branch have been impacted by flooding on numerous occasions over the past 35 years, since the great flood of 1995. Recent flooding events from 2019-2024 have caused notable channel movement resulting in loss of property and road washouts. During the 2018 ice jam the North Wolcott Road was completely washed out near address 2082 North Wolcott Road. The 2023 and 2024 floods caused additional streambank erosion along North Wolcott Road within the vicinity of this project area. Since the 1995 flood, the Wild Branch stream channel from Heath Road up to address 2082 North Wolcott Road has moved between 260 and 310 feet.

This river/road conflict area is a priority location identified for streambank restoration in the Wolcott Local Hazard Mitigation Plan, and the 2020 North Wolcott Road Flood Mitigation study conducted by SLR. This project will enhance floodplain access and allow floodwaters to dissipate on proposed floodplain benches and along the proposed engineered log jam. Increasing access to the floodplain and restoring the stream buffer will reduce streambank erosion along North Wolcott Road and neighboring properties. This project will enhance flood resiliency and riparian habitat along the Wild Branch.

I appreciate the opportunity to work with the Lamoille County Planning Commission and the Town of Wolcott to participate in the design process for this flood mitigation project.

Sincerely,

A handwritten signature in blue ink that reads "Roy A. Schoolcraft". The signature is fluid and cursive, with the first name "Roy" being the most prominent.

Roy Schoolcraft

Landowner

**TOWN OF WOLCOTT  
PO BOX 100  
WOLCOTT, VT 05680**

February 23, 2026

Dean Pierce, Senior Planner  
Lamoille Clean Water Service Provider  
Northwest Regional Planning Commission  
75 Fairfield Street, St. Albans, VT 05478

*Re: Lamoille Clean Water Service Provider Grant Application: North Wolcott Road Floodplain Restoration Project*

Dear Dean Pierce,

The Town of Wolcott is pleased to support the Lamoille County Planning Commission's CWSP Grant Application for preliminary design of the North Wolcott Road Floodplain Restoration Project.

This project involves restoring the floodplain and mitigating flooding in a key location along the Wild Branch off North Wolcott Road. This location frequently experiences flash flooding. The Wild Branch has experienced significant channel migration from fluvial erosion along the streambank. This stretch of North Wolcott Road and properties along the Wild Branch have been impacted by flooding on numerous occasions over the past 30 years, since the great flood of 1995. Recent flooding events from 2019-2024 caused notable channel movement resulting in loss of property and road washouts. During the 2018 ice jam the North Wolcott Road was completely washed out near address 2082 North Wolcott Road. The 2023 and 2024 floods caused additional streambank erosion along North Wolcott Road. Since the 1995 flood, the Wild Branch stream channel from Heath Road up to address 2082 North Wolcott Road has moved between 260 and 310 feet. Restoring the floodplain in these locations will increase flood storage capacity and reduce future debris/ice jams and flooding impacts on North Wolcott Road.

Restoring the floodplain in this location is a high priority in the Wolcott Local Hazard Mitigation Plan and was identified by SLR as a preferred location for floodplain restoration in the Lamoille River and Wild Branch Flood Model. This project will enhance flood resilience along North Wolcott Road. We appreciate the opportunity to work in partnership with the Lamoille County Planning Commission to pursue this high priority flood mitigation project.

Sincerely,



Linda Martin

Wolcott Selectboard Chair

Dean Pierce  
Senior Planner  
Lamoille Clean Water Service Provider  
Northwest Regional Planning Commission  
75 Fairfield Street, St. Albans, VT 05478  
802.582.3087

February 23, 2026

Re: Lamoille Clean Water Service Provider Grant Application: North Wolcott Road Floodplain Restoration Project

Dear Dean Pierce,

Vermont River Conservancy is pleased to support the Lamoille County Planning Commission's CWSP Grant Application for preliminary design of the North Wolcott Road Floodplain Restoration Project. The Vermont River Conservancy holds River Corridor easements along the Wild Branch within the vicinity of this project.

The North Wolcott Road area frequently experiences flash flooding along the Wild Branch and significant channel migration from fluvial erosion along the streambank. This stretch of North Wolcott Road and properties along the Wild Branch have been impacted by flooding on numerous occasions over the past 30 years, since the great flood of 1995. Recent flooding events from 2019-2024 caused notable channel movement resulting in loss of property and road washouts. During the 2018 ice jam the North Wolcott Road was completely washed out near address 2082 North Wolcott Road. The 2023 and 2024 floods caused additional streambank erosion along North Wolcott Road within the vicinity of this project area. Since the 1995 flood, the Wild Branch stream channel from Heath Road up to address 2082 North Wolcott Road has moved between 260 and 310 feet.

This river/road conflict area is a priority location identified for streambank restoration in the Wolcott Local Hazard Mitigation Plan, and the 2020 North Wolcott Road Flood Mitigation study conducted by SLR. This project will enhance floodplain access and allow floodwaters to dissipate on proposed floodplain benches and along the proposed engineered log jam. Increasing access to the floodplain and restoring the stream buffer will reduce streambank erosion along North Wolcott Road and neighboring properties. This project will also enhance flood resiliency and riparian habitat along the Wild Branch.

We appreciate the opportunity to work with the Lamoille County Planning Commission and the Town of Wolcott to participate in the design process for this flood mitigation project.

Sincerely,



Erin De Vries  
VRC Conservation Director



1 of 1 Find | Next

<b>Project Details</b>	
<b>WPD ID</b>	11432
<b>Status</b>	Proposed
<b>Project Name</b>	Heath Road Floodplain Restoration - Preliminary Design - Wolcott
<b>Project Type</b>	Floodplain/Stream Restoration - Preliminary Design
<b>Sector</b>	River
<b>Lat/Long</b>	44.58164, -72.47453
<b>Estimated Cost of Project Implementation (\$)</b>	
<b>Estimated Phosphorous Reduction (kg/year) (estimated prior to project implementation)</b>	
<b>Stream Segment</b>	
<b>Technical Project Manager</b>	
<b>Description</b>	This project is along the Wild Branch in Wolcott near the intersection of Heath Road and North Wolcott Road. Bank stabilization, a flood chute, and revegetation are all proposed measures to help restore the floodplain. All measures would help protect the eroding stream bank as well as improve floodplain access.  The bank stabilization work needs approval from Rivers Program that it will support the river's movement towards equilibrium position.
<b>Development Notes</b>	
<b>Submission Number</b>	HPT-XCMF-BTKA2

<b>Town/County/Region</b>
Wolcott

<b>Basin/Sub Basin</b>
Wild Branch

<b>Potential Partners</b>
Wolcott Town
Lamoille County Planning Commission

<b>Potential Funding Source</b>
---------------------------------

Event Date	Event Type	State Amount	Match	Grant Total	Funding Source	Grant Num	Funded Partner
6/16/2023	Project Created in Database						

Performance Measure	Value	Status
---------------------	-------	--------

**Related Projects**

	Relationship	WPD ID	Project Name	Status
<a href="#">View</a>	Parent	11232	North Wolcott Road Flood Mitigation Evaluation	Proposed
<a href="#">View</a>	Parent	12383	Project Development by Lamoille County Planning Commission 2022	Completed

**Records**

Date	Record Type	Record Title
------	-------------	--------------

14605 Silver Lake

<b>Title</b>	<b>Georgia Silver Lake Rd Floodplain and Wetland Restoration Preliminary Design</b>
<b>Basic Eligibility</b>	Yes
<b>Applicant Name</b>	Alysia Catalfamo
<b>Applicant Organization</b>	<b>Georgia Conservation Commission</b>
<b>Applicant Email</b>	acatalfamo@gmail.com
<b>Applicant telephone</b>	
<b>Project ID from WPD</b>	14605
<b>Description of Project</b>	The undersized and perched culvert running under Silver Lake Rd should be replaced with a structure that is appropriately sized, eliminates the perched condition, and provides for geomorphic compatibility and aquatic organism passage. It is also recommended that beaver dam analogs (BDAs) be installed along the length of the stream between the footbridge crossing and the upstream end of the culvert that runs under Silver Lake Rd (approximately 638 linear feet). This regenerative practice would allow for restoration of the existing riparian wetland area, reconnection to a portion of the stream's floodplain, and reduced instream velocities, which would slow bank erosion and undercutting.
<b>Project Latitude</b>	44.69638
<b>Project Longitude</b>	-73.05957
<b>Project Phase</b>	<b>Preliminary Design</b>
<b>Annual P Reduction KG</b>	4.9
<b>Any one time P reduction KG</b>	
<b>Total Cost of Proposed Phase</b>	29449.66
<b>Amount of funding requested (Proposed Phase)</b>	\$29,449.66
<b>Matching Funds Available</b>	\$0.00
<b>Total Project Costs (All Phases)</b>	implementation: \$100,000-200,000. all phases: \$175,000-300,000
<b>KG/\$ Current Phase</b>	0.000166386
<b>KG/\$ Overall</b>	#INVALID OPERATION
<b>Design Life</b>	10
<b>Estimated Annual O&amp;M cost total</b>	Not available, depends on practices selected
<b>Conformance with Tactical Basin Plan TBP</b>	10
<b>Number of Co-benefit Areas</b>	2
<b>DEC Screening Form Uploaded</b>	Yes
<b>Map of Project Area Uploaded</b>	Yes
<b>Project Budget Uploaded</b>	Yes
<b>Project Schedule Uploaded</b>	Yes
<b>Landowner Support uploaded</b>	Yes
<b>Phosphorus Calculator Tool uploaded</b>	Yes
<b>Created</b>	03/12/26 1:42 PM
<b>Design/Imp Costs Requested</b>	29449.66
<b>Design-Imp Costs Total</b>	implementation: \$100,000-200,000. all phases: \$175,000-300,000
<b>Using_As_Match</b>	No
<b>Cultural Resource Review</b>	No
<b>O&amp;M interest</b>	No
<b>continued project</b>	<b>Yes</b>

## APPENDIX A. CLEAN WATER INITIATIVE PROGRAM - PROJECT ELIGIBILITY SCREENING FORM

This fillable PDF form is designed to assist with project review by systematically walking through all eligibility criteria. It should be completed for all projects seeking funding for 30% + design or implementation work. It may be applied to projects seeking funding for assessment or development if helpful for determining their alignment with eligibility criteria 2, 3, 6, and 8.

### Step 1: Conduct Eligibility Criteria #1 Screening: Project Purpose

Table 1A: Project Purpose	
From the drop-down list to the right, please select which of the four objectives of Vermont's Surface Water Management Strategy this project addresses. If multiple, please list below:  Protect and restore aquatic and riparian habitats, Minimize flood and fluvial erosion hazards	Multiple

## Step 2: Conduct Eligibility Criteria #2 Screening: Project Types and Standards

Table 2A: Project Types and Standards	
<p>Please select the most representative project type from the drop-down list to the right.<sup>1,2</sup> If multiple BMPs are included in the project, please list below:</p> <p>Preliminary design for floodplain / stream restoration and culvert replacement <span style="float: right;">+</span></p>	<p>Floodplain/Stream Restoration - Preliminary Engineering D</p>
<p>Is the project type an eligible project type for the funding program you are applying to as listed in column B of the <a href="#">CWIP Project Types Table</a>?</p> <p>(Answer must be YES to proceed)</p>	<p>Yes <input checked="" type="radio"/> No <input type="radio"/></p>
<p>Does the project meet the project type definitions and minimum standards as provided in column C of the <a href="#">CWIP Project Types Table</a>?</p> <p>(Answer must be YES to proceed)</p>	<p>Yes <input checked="" type="radio"/> No <input type="radio"/></p>
<p>Will the project result in the standard performance measures, milestones, and deliverables as defined by project type in columns D-F of the <a href="#">CWIP Project Types Table</a>?</p> <p>(Answer must be YES to proceed)</p>	<p>Yes <input checked="" type="radio"/> No <input type="radio"/></p>
<p>Is the project listed as an ineligible project or activity in the <a href="#">CWIP Funding Policy</a>? If Yes, please explain below how project meets the allowable exceptions within the CWIP Funding Policy.</p> <p>(Answer must be NO to proceed, unless reasonable justification is provided above)</p>	<p>Yes <input type="radio"/> No <input checked="" type="radio"/></p>

## Step 3: Conduct Eligibility Criteria #3 Screening: Watershed Projects Database

Verify project has been recorded in the [Watershed Project Database](#) (WPD). Each project must have a Watershed Project Database number specific to the proposed project phase (for example,

<sup>1</sup> Note that Road/Stormwater Gully project-types must not otherwise be considered intermittent or perennial streams by the DEC Rivers Program and therefore project proponent must show documentation of this determination in order to select this project type.

<sup>2</sup> One project may include multiple best management practices (BMPs) that cross “project types.” For example, a single project may include both stormwater and lake shoreland BMPs. Proponents should use their best judgement in selecting the most representative project type for the purposes of eligibility screening and reporting.

a final design will have a different WPD-ID from a preliminary design even if for the same project). If the project, or the specific phase, is not yet in the Watershed Project Database, follow directions provided in the CWIP Funding Policy to secure a WPD-ID. Please see [CWIP Funding Policy](#) for more information on the WPD-ID.

Table 3A. WPD-ID	
Watershed Project Database ID number assigned	TBD
Watershed Project Database Project Name	Georgia Silver Lake Rd Floodplain and Wetland Restoration Preliminary Design

#### Step 4: Conduct Eligibility Criteria #4 Screening: Natural Resource Impacts<sup>3</sup>

Agency of Natural Resources (ANR) permit screening for natural resource impacts includes 1) an initial desktop review to identify which ANR permitting programs should be contacted, 2) a review by the relevant ANR permitting staff, and 3) a response summary from the project proponent addressing any permitting staff concerns. <sup>4</sup>

- 1) **Table 4. Natural Resource Impacts** facilitates a high-level desktop review of the most likely ANR permits to apply to clean water projects. Project proponents should answer all the questions to identify likely permit needs. <sup>5</sup> Please note that “project site” may include both the active restoration location as well as any additional impact footprint related to staging, site access, or storage of waste or disposed materials.
- 2) If responses to the **Table 4. Natural Resource Impacts** desktop review trigger a permitting staff consultation, **Table 4** provides appropriate contact information.
  - a. Proponents should send the identified permitting staff the following:
    - i. The watersheds project database identification number (WPD-ID) (if available),
    - ii. Project location (GPS coordinates)
    - iii. Summary of proposed scope of work, and
    - iv. Any other relevant information they request that will be utilized in their review.
  - b. **Proponents should clarify they are seeking permitting staff input on potential permitting needs, permit-ability of proposed scope of work, and other design considerations but they are NOT seeking a formal permit determination.**
  - c. Project proponents must attempt to communicate with the permitting staff and provide them with at least thirty days to review the project and provide a

<sup>3</sup> Easements and Riparian Buffer Plantings are excluded from this eligibility requirement/step.

<sup>4</sup> In cases where this screening may have already occurred in a prior project phase, project proponents may supply attachments or links to relevant permit needs assessment documents in place of completing Table 4.

<sup>5</sup> Entities selected for funding are expected to perform due diligence to ensure all applicable permits (including non-ANR state, local, and federal permits) are discovered and secured prior to implementation. The [ANR Permit Navigator](#) and an Environmental Compliance Division Community Assistance Specialist can help confirm ANR permitting needs for any projects once selected for funding.



level (shoreline) of a lake or pond? <sup>11</sup>	
<p>If <b>yes</b>, you might need either a Shoreland Protection Act Permit or a Lake Encroachment Permit. Use the <a href="#">Water Quality Project Screening Tool</a> to find the Lakes and Ponds Program contact for your project's region.</p> <p>Regulatory Point of Contact Name/Position:</p>	
<b>III. Rivers, River Corridors, and Flood Hazard Areas</b>	
<p><b>1. Is there any portion of the project site located within 100' of a river corridor and/or mapped Federal Emergency Management Agency (FEMA) flood hazard area<sup>12</sup>? (e.g. a stormwater pond's pipe draining into a river corridor area)? Any permanent excavation/filling or construction within a flood hazard area or river corridor may trigger regulatory requirements through municipal bylaws or through state authorities.</b></p>	<p>Yes <input checked="" type="radio"/> No <input type="radio"/></p>
<p>If <b>yes</b>, you will need to speak with a <a href="#">Floodplain Manager</a>. Use the <a href="#">Water Quality Project Screening Tool</a> to find the Floodplain Manager for your project's region.</p> <p>Regulatory Point of Contact Name/Position: Rose Watts, 802-522-5386, rose.watts@vermont.gov</p>	
<p><b>2. Is any portion of the project site within a perennial river or stream channel?</b> <small>13</small></p>	<p>Yes <input checked="" type="radio"/> No <input type="radio"/></p>
<p>If <b>yes</b>, you will need to speak with a <a href="#">Stream Alteration Engineer</a>. Use the <a href="#">Water Quality Project Screening Tool</a> to find the Stream Alteration Engineer for your project's region.</p> <p>Regulatory Point of Contact Name/Position: Chris Brunelle 802-777-5328 Chris.Brunelle@vermont.gov</p>	
<b>IV. Wetland</b>	

<sup>11</sup> The [ANR Atlas Clean Water Initiative Program Grant Screening tool](#) can help answer this yes/no question. Follow the instructions on the link above to identify whether your project is located in the jurisdictional zone to trigger a Lakeshore permit. Note that the layer to activate in ANR Atlas is now named "Clean Water Initiative Program Grant Screening."

<sup>12</sup> FEMA mapped Flood Hazard Areas are not available statewide on the ANR Natural Resources Atlas. For projects located in Grand Isle, Franklin, Lamoille, Addison, Essex, Orleans, Caledonia, and Orange Counties, maps are available via the FEMA Flood Map Service Center: <https://msc.fema.gov/portal/home>. ANR Floodplain Managers are available to provide technical assistance if needed.

<sup>13</sup> Stream Alteration Permits regulate all activities that take place within perennial river and stream channels. Examples of regulated activities include streambank stabilization, dam removal, road improvements that encroach on streams, and bridge/culvert construction or repair. The [ANR Atlas Clean Water Initiative Program Grant Screening tool](#) can help answer this yes/no question. Follow the instructions on the link above to identify whether your project is located in the jurisdictional zone to trigger a Stream Alteration permit. Note that the layer to activate in ANR Atlas is now named "Clean Water Initiative Program Grant Screening."

<p>1. Does the <a href="#">Wetland Screening Tool</a><sup>14</sup> provide a result of wetlands likely, very likely, or present at the project site?</p>	<p>Yes <input checked="" type="radio"/> No <input type="radio"/></p>
<p>2. Does your project site involve land that is in or near an area that has <u>any</u> of the following characteristics:</p> <ul style="list-style-type: none"> <li>o Water is present – ponds, streams, springs, seeps, water filled depressions, soggy ground under foot, trees with shallow roots or water marks?</li> <li>o Wetland plants, such as cattails, ferns, sphagnum moss, willows, red maple, trees with roots growing along the ground surface, swollen trunk bases, or flat root bases when tipped over?</li> <li>o Wetland Soils – soil is dark over gray, gray/blue/green? Is there presence of rusty/red/dark streaks? Soil smells like rotten eggs, feels greasy, mushy or wet? Water fills holes within a few minutes of digging? (See <a href="#">Landowners Guide to Wetlands</a> for additional information on identifying wetlands onsite.)</li> </ul>	<p>Yes <input checked="" type="radio"/></p> <p>No <input type="radio"/></p> <p>Not Sure <input type="radio"/></p>
<p>If you answered <i>yes</i> or <i>not sure</i> to <u>either</u> of the above questions, you will need to contact your <a href="#">District Wetlands Ecologist</a> using the <a href="#">Wetland Inquiry Form</a>. The District Wetlands Ecologist can help determine the approximate locations of wetlands and whether you need to hire a Wetland Consultant to conduct a wetland delineation. Alternatively, if you answered <i>yes</i> or <i>not sure</i> to <u>either</u> of the above questions, you can simply budget for a Wetland Consultant in the proposed scope of work. Any activity within a Class I or II wetland or wetland buffer zone (minimum of 100 feet and 50 feet respectively) which is not exempt or considered an “allowed use” under the <a href="#">Vermont Wetland Rules</a> requires a permit. All permits must go through review and public notice process, which takes at minimum 6 weeks for a General Permit and 5 months for an Individual Permit.</p> <p><b>Regulatory Point of Contact Name/Position:</b>                  Krystal Sewell, Krystal.T.Sewell@vermont.gov</p>	
<p>1. Is your project a Wetland Restoration project type?</p>	<p>Yes <input checked="" type="radio"/> No <input type="radio"/></p>
<p>If you answered yes, under the <a href="#">Vermont Wetland Rules</a> you will need an “allowed use” determination from the DEC Wetlands Program. Contact your <a href="#">District Wetlands Ecologist</a> using the <a href="#">Wetland Inquiry Form</a>.</p> <p><b>Regulatory Point of Contact Name/Position:</b> Krystal Sewell, Krystal.T.Sewell@vermont.gov</p>	
<p><b>V. Fish and Wildlife</b></p>	
<p>State law protects endangered and threatened species. No person may take or possess such species without a Threatened &amp; Endangered Species Takings permit.</p> <p>1. Does your project involve cutting down trees larger than 5 inches in diameter in any of the following towns? Addison, Arlington, Benson, Brandon, Bridport, Bristol, Charlotte, Cornwall, Danby, Dorset, Fair Haven, Ferrisburgh, Hinesburg, Manchester, Middlebury, Monkton, New Haven, Orwell, Panton, Pawlet, Pittsford, Rupert, Salisbury, Sandgate, Shoreham, Starksboro, St. George, Sudbury, Sunderland, Vergennes, Waltham, West Haven, Weybridge, Whiting</p>	<p>Yes <input type="radio"/> No <input checked="" type="radio"/></p>

<sup>14</sup> To view the Wetland Screening Tool introduction video, see <https://youtu.be/6lv5en0AB1o>

<b>2. Is the project site within 1 mile of a mapped<sup>15</sup> Significant Natural Community or Rare, Threatened, or Endangered Species?</b>	Yes <input type="radio"/> No <input checked="" type="radio"/>
If <b>yes</b> to either of the above questions, connect with the VT Fish and Wildlife department (everett.marshall@vermont.gov 802-371-7333) to discuss your project and any necessary permitting.  Regulatory Point of Contact Name/Position:	
<b>VI. Stormwater</b>	
<b>1. Will the project disturb more than an acre of land during construction, add or redevelop impervious surface, create new development or <a href="#">otherwise require a Stormwater permit?</a></b>	Yes <input type="radio"/> No <input checked="" type="radio"/>
If <b>yes</b> , forward to the appropriate <a href="#">Stormwater specialist</a> to ensure necessary permitting. Use the <a href="#">Water Quality Project Screening Tool</a> to find the Stormwater specialist for your project's region.  Regulatory Point of Contact Name/Position:	
<b>VII. Solid Waste</b>	
<b>2. Will you be creating any debris (including construction and demolition waste, stumps, brush, untreated wood, concrete, masonry, and mortar) with your project that you intend to bury on site?<sup>16</sup></b>	Yes <input type="radio"/> No <input checked="" type="radio"/>
If yes, connect with the Waste Management & Prevention Division (dennis.fekert@vermont.gov 802-522-0195) to discuss your project and any necessary permitting.  Regulatory Point of Contact Name/Position:	
Provide below or attach a narrative summary of Table 4 findings. Please include: <ol style="list-style-type: none"> <li>Which permits or permit amendment are needed or might be needed?</li> <li>What type might be needed? (e.g. a general or individual permit)?</li> <li>What concerns were voiced by permitting staff?</li> <li>How will the proposed scope of work address these concerns?</li> </ol> Key permitting considerations include Rivers and Floodplains, Stream Alteration, and Wetlands.	
Is the project, as proposed, reasonably considered permit-able by all applicable	Yes <input type="radio"/> No <input type="radio"/>

<sup>15</sup> Find both of these layers on the ANR Atlas under Atlas Layers/Fish and Wildlife. Use the Measurement tool to 1) Plot Coordinates for your project 2) select the coordinates from the left panel 3) select the Radius Tool 4) click on your project location 5) Indicate 1 mile distance 6) look for overlap with either of these mapped layers.

<sup>16</sup> If your project will result in the transfer and disposal of debris (including construction and demolition waste, stumps, brush, untreated wood, concrete, masonry and mortar), you do not need a permit from this office as long as you hire a [licensed solid waste hauler](#) and bring the material to a certified facility.



<p>determine if it is a <a href="#">jurisdictional farm operation</a>, and any case that requires consultation with AAFM will occur via the <a href="#">farm determination</a> process. Please note this form must be submitted by the farm operation/landowner seeking the determination.</p>	<p><input type="radio"/> <b>No</b><sup>18</sup> - There is no additional requirements related to agricultural review for these projects.</p>								
<p><b>2. Is the proposed project an agricultural project?</b></p> <p>Examples of agricultural projects include but are not limited to Production Area Practices – (e.g. Waste Storage Facilities, Heavy Use Area, Diversion) Fence, Livestock Exclusion, Filter Strip, Cover Crop, Reduced Tillage, Manure Injection, Rotational Grazing. Please note this is not an exhaustive list of all agricultural practices.</p>	<p><input type="radio"/> <b>Yes</b> - Agricultural Projects on jurisdictional farms are not an eligible project type. You can provide a referral to an applicable state or federal agricultural <a href="#">assistance program</a>, or a local organization.</p> <p><input type="radio"/> <b>No</b>- The natural resource, innovative, or other project type will require an agricultural project review and approval from the Vermont Agency of Agriculture, Food and Markets (VAAFAM) to ensure a consistent approach on farms statewide that follows rules, regulations, and laws in place. Please follow Steps 1 &amp; 2 below.</p> <p><b>Step 1</b>- Please submit a detailed description of the project, project site, project details, landowner, farm operation, and any other relevant information to VAAFAM at <a href="mailto:AGR.WaterQuality@Vermont.gov">AGR.WaterQuality@Vermont.gov</a> .</p> <p><b>Step 2</b>- Once you complete this Agricultural Project Review, please allow 30 days for a response. Once that response has been received, please include a summary of the response in the next section.</p>								
<p><b>Agricultural Project Review Status &amp; Summary:</b></p>									
<table border="1"> <thead> <tr> <th>Check as Applicable</th> <th>Status</th> </tr> </thead> <tbody> <tr> <td><input type="checkbox"/></td> <td>Submitted/ Pending</td> </tr> <tr> <td><input type="checkbox"/></td> <td>Approved</td> </tr> <tr> <td><input type="checkbox"/></td> <td>Denied</td> </tr> </tbody> </table>	Check as Applicable	Status	<input type="checkbox"/>	Submitted/ Pending	<input type="checkbox"/>	Approved	<input type="checkbox"/>	Denied	
Check as Applicable	Status								
<input type="checkbox"/>	Submitted/ Pending								
<input type="checkbox"/>	Approved								
<input type="checkbox"/>	Denied								

<sup>18</sup> Note CWIP’s Agricultural Pollution Prevention project type eligibility is limited to land where owner or operator is not a jurisdictional farm (i.e., not required to meet the Required Agricultural Practices (RAPs)). As such, projects that meet the definition of the Agricultural Pollution Prevention project type in the [Appendix B. Project Types Table](#) are not subject to review by VAAFAM.

Updated: 12/2/2022 2:44:00 PM

Please include a summary of the response here:

Please note that it is expected that all projects with the status "submitted/pending" will be "approved" prior to a project approval for funding.

## Budget

	Expense	Amount	Rate	Total
Engineering Consultant Services	lump sum to perform all services described in schedule, estimate provided by project development contractor		-	\$ 24,000.00
<b>NRPC Project Management services</b>				
	mileage (3 round trips)	72	\$ 0.725	\$ 52.20
	Regional Planner: procurement/contracting process, participation in site visits	45	\$ 26.11	\$ 1,174.95
	Senior Planner: grant & staff oversight, review of contractor reports and other materials	25	\$ 51.03	\$ 1,275.75
	Asst Director/Director: grant & staff oversight as-needed	3	\$ 85.70	\$ 257.10
			Subtotal:	\$ 2,707.80
		Indirect Rate:	99.33%	\$ 2,689.66
			Total NRPC:	\$ 5,449.66
			<b>Project total:</b>	<b>\$ 29,449.66</b>

## **Silver Lake Road Preliminary Design Proposed Schedule: April 2026 – March 2027**

### Task 1: Hire Consultants

*April-May 2026*

A request for proposals will be made to a minimum of 3 engineering firms. Proposals will be evaluated and a contractor selected by the Georgia Conservation Commission.

A subcontract with NRPC for project management services will also be executed during this time.

### Task 2: Kickoff Site Visit

*May-June 2026*

There will be an initial site visit with selected consultant to discuss data collection needs and adjust timelines as needed.

### Task 3: Development of 30% design

*May 2026-January 2027*

The selected engineering consultant will perform the following tasks:

1. Existing conditions topographic and features survey – survey stream corridor, culvert, road features.
2. Permitting investigation – State/ACOE wetlands, DEC rivers stream/floodplain, VDHP, Act 250, Vermont F&W.
3. Perform wetlands delineation.
4. 30% concept plan development.
5. Outreach – present draft 30% plan to landowner, planning commission, regulators.
6. Finalize 30% plan, 30% report including cost estimate and P load reduction calculations. Develop draft site access agreement and operations and maintenance plan.

#### Task 4: Reporting

*January – March 2027*

NRPC staff on behalf of the Georgia Conservation Commission will complete final reporting per CWSP requirements.

## Stream Stability and Storage Credit Summary

### Annual Credit (kg/yr)

#### Floodplain Connectivity (Lateral - Vertical)

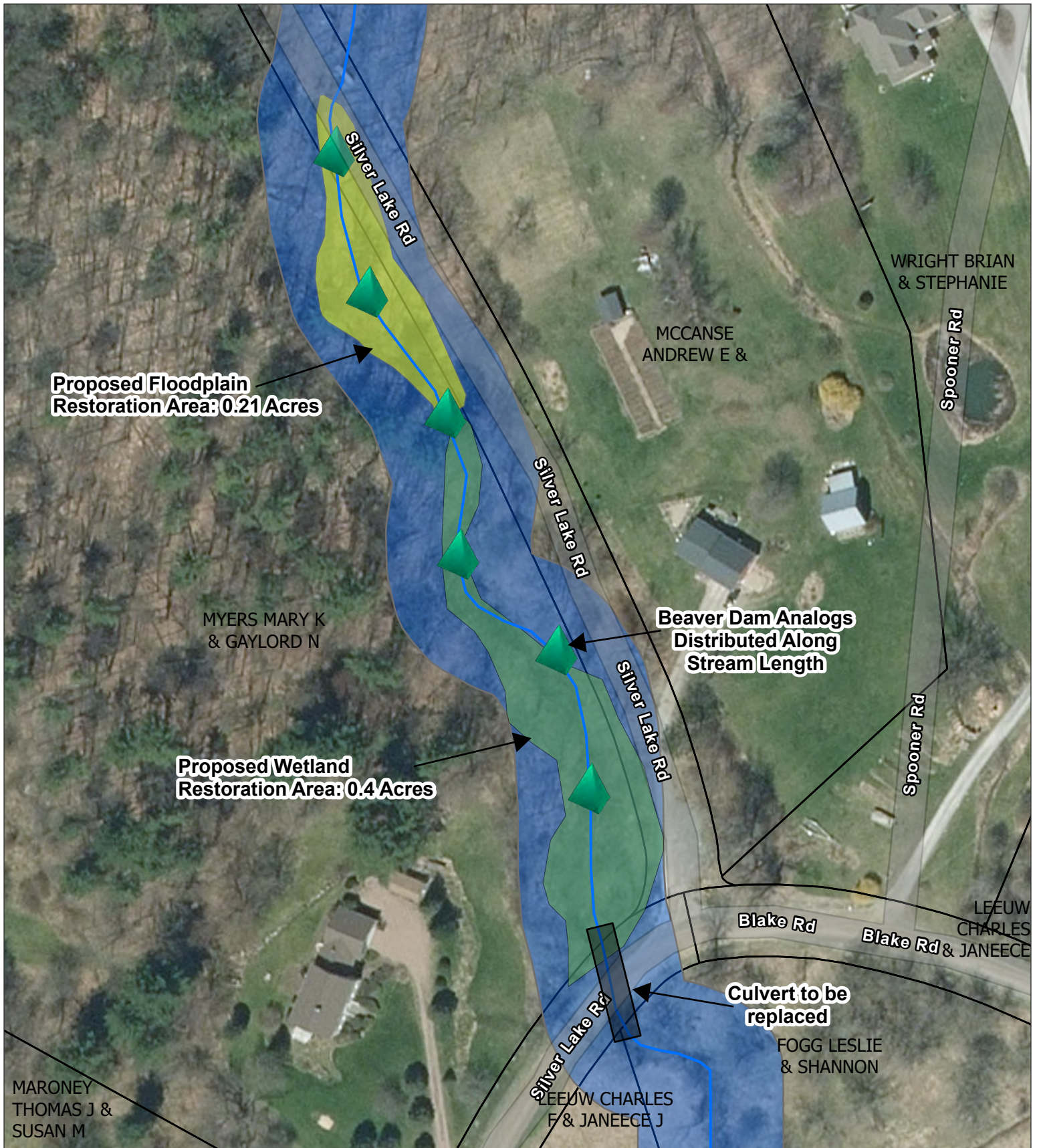
Stream Stability	0.0
------------------	-----

Storage	2.8
---------	-----

#### Stream Connectivity (Longitudinal - Temporal)

Stream Stability	2.1
------------------	-----

TOTAL	4.9
-------	-----



**Proposed Floodplain  
Restoration Area: 0.21 Acres**

**Proposed Wetland  
Restoration Area: 0.4 Acres**

**Beaver Dam Analogs  
Distributed Along  
Stream Length**

**Culvert to be  
replaced**

MARONEY  
THOMAS J &  
SUSAN M

MYERS MARY K  
& GAYLORD N

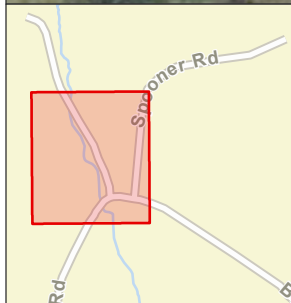
MCCANSE  
ANDREW E &

WRIGHT BRIAN  
& STEPHANIE

LEEUW  
CHARLES  
& JANECEE

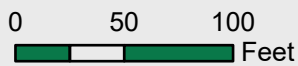
FOGG LESLIE  
& SHANNON

LEEUW CHARLES  
F & JANECEE J



**Silver Lake Rd  
Project Development Summary  
Georgia, VT**

Map Date: 12/11/2025



Scale: 1 in = 88 ft

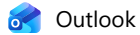


**Legend**

-  Streams
-  Floodplain Restoration Area
-  Wetland Restoration Area
-  Stream Buffer (50ft)
-  Parcel Boundaries
-  Proposed Beaver Dam Analogs



## **INDICATION OF LANDOWNER SUPPORT**



---

**Re: Water Quality Project: Georgia Conservation Commission/NRPC**

---

**From** gnchipmyers@gmail.com <gnchipmyers@gmail.com>  
**Date** Tue 3/3/2026 1:57 PM  
**To** Nora Brown <NBrown@nrpcvt.com>

Sounds good to Mary and I.  
Thanks!  
Sent from my iPhone

On Mar 3, 2026, at 9:38 AM, Nora Brown <NBrown@nrpcvt.com> wrote:

Good morning. I do not believe that will be an issue, but I will certainly include that wish in my communications with the engineers and any future contracts. The recommended beaver dam analogs are placed directly in the stream, so there wouldn't be much work done on the banks. I will specify that materials for the BDAs be sourced from elsewhere on the site so as not to impact your privacy.

Does that sound good to you both? If so, are you supportive of the project moving forward provided that no vegetation impacting your views and privacy are cut?

Thanks!  
Nora

**Nora Brown** | (she/her)  
**Regional Planner**  
<Outlook-dd0ofcyb.png>

75 Fairfield Street  
St. Albans, VT 05478  
802.524.5958 – ext. 130  
[www.nrpcvt.com](http://www.nrpcvt.com)

---

**From:** gnchipmyers@gmail.com <gnchipmyers@gmail.com>  
**Sent:** Monday, March 2, 2026 7:10 PM  
**To:** Nora Brown <NBrown@nrpcvt.com>  
**Subject:** Re: Water Quality Project: Georgia Conservation Commission/NRPC

Good evening Nora, Thanks for keeping us informed on the culvert work. I just want to be sure that you will not remove any trees, bushes and greenery on the property near the stream. As the property stands, we can see the parking lot slightly in the Fall when the greenery dies off. I would not want anything cut that would make the parking lot visible from our front doors and driveway in all seasons. We like our views and privacy as it was the past years!  
Chip and Mary Myers

Sent from my iPhone

On Mar 2, 2026, at 3:11 PM, Nora Brown <NBrown@nrpcvt.com> wrote:

Hi Mr. Myers,

I hope you are well. I just wanted to follow up and see if you have had a chance to look over these materials related to the culvert and stream on your property. I would be happy to answer any questions you might have.

Thanks,  
Nora

**Nora Brown** | (she/her)  
**Regional Planner**  
<Outlook-ssyl1hqc.png>

75 Fairfield Street  
St. Albans, VT 05478  
802.524.5958 – ext. 130  
[www.nrpcvt.com](http://www.nrpcvt.com)

---

**From:** Nora Brown  
**Sent:** Wednesday, February 25, 2026 2:29 PM  
**To:** Gnchipmyers@gmail.com <Gnchipmyers@gmail.com>  
**Subject:** Water Quality Project: Georgia Conservation Commission/NRPC

Hi Mr. Myers,

Thank you for taking my call this afternoon. I am working on this project with the Georgia Conservation Commission. On their behalf, I wanted to send along the project scoping report that was completed earlier this year detailing the engineer's recommendations for floodplain restoration work along the stream on your land. You'll see the proposed measures in the attached map as well.

These images are very preliminary outlines of what might be considered. Exact layouts and extents of different areas identified for work will differ from what you see here. Any eventual designs would welcome your input as well. The next thing we would ask of you, if you choose to do so, is a written expression of support to include in our funding application.

Feel free to reach out to me with any of your questions or concerns. The Conservation Commission and I are both excited at the potential to help protect Lake Champlain with your help!

Best wishes,  
Nora

Nora Brown | (she/her)  
*Regional Planner*  
<Outlook-kkvzsb3.png>

75 Fairfield Street  
St. Albans, VT 05478  
802.524.5958 – ext. 130  
[www.nrpcvt.com](http://www.nrpcvt.com)

---

**Re: Silver Lake Rd Project**

---

**From** Alysia Catalfamo <acatalfamo@gmail.com>  
**Date** Sun 3/8/2026 9:19 PM  
**To** Nora Brown <NBrown@nrpcvt.com>

Hi Nora,

Yes, that would be more than ok with us. I authorize you to submit the application on my/the Georgia Conservation Commission's behalf.

Thanks!  
Alysia

On Fri, Mar 6, 2026 at 11:13 AM Nora Brown <[NBrown@nrpcvt.com](mailto:NBrown@nrpcvt.com)> wrote:

Hi Alysia,

Just wanted to follow up with you on this question. Would you be OK with my submitting the application form on your behalf? If so, can you confirm that you authorize me to do so via email?

Thanks!  
Nora

---

**From:** Nora Brown <[NBrown@nrpcvt.com](mailto:NBrown@nrpcvt.com)>  
**Sent:** Monday, March 2, 2026 4:06 PM  
**To:** Alysia Catalfamo <[acatalfamo@gmail.com](mailto:acatalfamo@gmail.com)>  
**Subject:** Re: Silver Lake Rd Project

Hi Alysia,

I hope you had a good weekend. I've been in touch with my supervisor, and we both agree it makes sense for me to submit this application on the Commission's behalf. That seems to be the most straightforward way.

If you agree, would you be able to send me an email stating that you authorize me to submit this application on your/the Commission's behalf? That way I have it in writing and can include it in the application.

Thanks!  
Nora

---

**From:** Alysia Catalfamo <[acatalfamo@gmail.com](mailto:acatalfamo@gmail.com)>  
**Sent:** Thursday, February 19, 2026 9:28 AM  
**To:** Nora Brown <[NBrown@nrpcvt.com](mailto:NBrown@nrpcvt.com)>  
**Subject:** Re: Silver Lake Rd Project

It was really nice meeting you as well. I'll take a look at the form this weekend. Thanks!

On Tue, Feb 17, 2026 at 4:39 PM Nora Brown <[NBrown@nrpcvt.com](mailto:NBrown@nrpcvt.com)> wrote:

Hi Alysia,

It was great meeting with everyone last night! I am looking forward to moving this project along with the conservation commission's help.

I've reached out to the consultant to get started on compiling a budget and schedule for the application, and I'll keep you updated on what I hear back. As I said last night, ideally someone from the commission would actually submit the application form, but I can put the materials together. The form is viewable [here](#) or attached as an editable PDF.

Let me know if you have any questions.

Thanks,  
Nora

---

**From:** Nora Brown <[NBrown@nrpcvt.com](mailto:NBrown@nrpcvt.com)>  
**Sent:** Friday, February 13, 2026 12:47 PM  
**To:** Alysia Catalfamo <[acatalfamo@gmail.com](mailto:acatalfamo@gmail.com)>  
**Subject:** Re: Silver Lake Rd Project

Looking forward to it! Feel free to share the report with the rest of the commission if you think that makes sense.

---



Project Details	
<b>WPD ID</b>	14605
<b>Status</b>	Proposed
<b>Project Name</b>	Georgia Silver Lake Rd Floodplain and Wetland Restoration Preliminary Design
<b>Project Type</b>	Floodplain/Stream Restoration - Preliminary Design
<b>Sector</b>	River
<b>Lat/Long</b>	44.69638, -73.05957
<b>Estimated Cost of Project Implementation (\$)</b>	
<b>Estimated Phosphorous Reduction (kg/year) (estimated prior to project implementation)</b>	
<b>Stream Segment</b>	
<b>Technical Project Manager</b>	
<b>Description</b>	The undersized and perched culvert running under Silver Lake Rd should be replaced with a structure that is appropriately sized, eliminates the perched condition, and provides for geomorphic compatibility and aquatic organism passage. It is also recommended that beaver dam analogs (BDAs) be installed along the length of the stream between the footbridge crossing and the upstream end of the culvert that runs under Silver Lake Rd (approximately 638 linear feet). This regenerative practice would allow for restoration of the existing riparian wetland area, reconnection to a portion of the stream's floodplain, and reduced instream velocities, which would slow bank erosion and undercutting.
<b>Development Notes</b>	
<b>Submission Number</b>	HQJ-70XB-1N2D8

Town/County/Region
Georgia

Basin/Sub Basin
Tributaries to Lower Mid Lamoille

Potential Partners
Georgia Town
Northwest Regional Planning Commission

Potential Funding Source
Clean Water Fund
Lake Champlain Basin Program (External to DEC)

Event Date	Event Type	State Amount	Match	Grant Total	Funding Source	Grant Num	Funded Partner
1/5/2026	Project Created in Database						

Performance Measure	Value	Status

Related Projects				
View	Relationship	WPD ID	Project Name	Status
	Parent	12422	Georgia Silver Lake Project Development	Funded

Records			
Date	Record Type	Record Title	

- **Tactical Basin Planning and relation to Lamoille BWQC**

**MEMO**

TO: LAMOILLE BASIN WATER QUALITY COUNCIL (BWQC)  
FR: LAMOILLE BASIN CLEAN WATER SERVICE PROVIDER (CWSP) STAFF  
RE: TACTICAL BASIN PLAN PRESENTATION  
DA: March 19, 2025

=====

Act 76 gave BWQCs an important role in Vermont’s “Tactical Basin Plan” (TBP) process. The law specifically mandates their involvement in basin planning and asks them to consider the resulting plan when making water quality investment decisions. Act 76 positions the BWQC as the key local decision-making body responsible for translating the strategic guidance provided by the Tactical Basin Plan into actionable, prioritized, and funded non-regulatory clean water projects.

TBPs are adopted roughly every five years, and the effort to update the Lamoille Basin TBP is currently underway. On March 26, Basin Planner Karen Bates will brief the BWQC on this effort and use the opportunity to solicit input from BWQC members on various issues. To review the current TBP or related resources, visit <https://dec.vermont.gov/water-investment/watershed-planning/basins-and-planners/basin6> .

- **Updates**
- **Conclusion**

## MEMORANDUM

TO: Lamoille Basin Water Quality Council members

FR: CWSP Staff

RE: Briefly noted/ Updates / Conclusion

DA: March 19, 2026

---

### Online Systems for invoice and deliverables uploading

Staff intend to provide a brief description of the CWSP's prototype system for uploading invoices, progress reports, and project deliverables.

### Standard Task Award elements

Staff also intend to provide an update on the growing list of Task Award conditions.

### Possible topics at next meeting (May 28)

Finally, possible topics for the May meeting include:

- Application review (round 11)
- Presentation on Forest Road project type. (confirmed)
- Vote on whether to organize Nominating Committee

### Future meetings

- Demonstration of online invoice uploading.
- Demonstration of project deliverables uploading.
- Details of new/proposed to be revised DEC policies