



# Northwest Regional Planning Commission

Northwest Regional Planning Commission

2025 Year in Review



Northwest Regional Planning Commission (NRPC) strengthens the capability of municipalities.

In the absence of county government, RPCs play a critical role in connecting communities with federal and state programs.

RPCs are political subdivisions of the State of Vermont, uniquely positioned to provide broad services to every municipality:



TRANSPORTATION PLANNING



LAND USE PLANNING



AND TECHNICAL ASSISTANCE IN ALL AREAS



WATER QUALITY



HAZARD MITIGATION & PREPAREDNESS



HOUSING



BROWNFIELD ASSESSMENT & REMEDIATION



ECONOMIC DEVELOPMENT

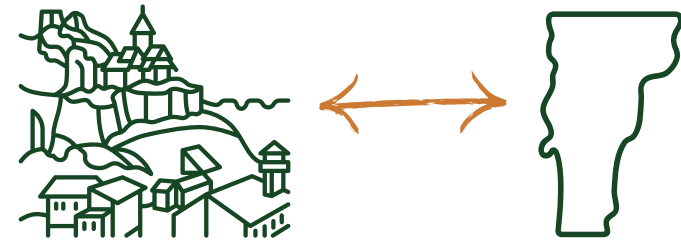


ENERGY PLANNING



# State Policy

RPCs are a critical resource for the state in policy deliberations and implementation.



RPCs are a direct link between municipalities and state government and are often called upon to support policy development and implementation in the areas of housing, economic development, brownfields, energy, transportation, water quality, and more.



NRPC participated in legislative discussions around the three-acre permit and the open meeting law, to ensure that changes would be beneficial to our communities



# Housing

NRPC is the host organization for Housing For All, a program aimed at increasing the quality and quantity of housing in the region.

Housing For All is funded by the State of Vermont and the Boston Federal Reserve.

Housing targets for the region include a need for 2,144 new homes by 2030 and 6,755 by 2050.



Under the duplex and accessory dwelling unit pilot project, NRPC provided contractor assistance and mini grants to 4 homeowners to add a housing unit.

NRPC helped to fund a water supply analysis supporting a 30-unit senior housing project in Highgate.



# Economic Development

Strong local economies arise from comprehensive land use planning and united development efforts.

NRPC helps build community infrastructure and guide development patterns to provide the foundation and public support for private economic development.

NRPC maintains the Northern Vermont Economic Development District, serving the 6 northern counties of VT.



NRPC provides project management services to two communities in the region who are planning to build wastewater facilities to support housing and economic growth.



# Brownfields



6 communities were able to assess or remediate polluted land at 9 sites. With grants from EPA, NRPC has invested \$5 million in brownfields.

By assessing, remediating, and reinvesting in these properties communities can achieve a variety of benefits:

 INCREASE LOCAL TAX BASES

 EXPAND LOCAL HOUSING AND COMMERCIAL PROPERTY STOCK

 IMPROVE PUBLIC HEALTH

 ENCOURAGE ECONOMIC DEVELOPMENT

 CREATE JOBS



**Highgate and Swanton Village** are working to assess and develop cleanup plans on brownfields sites for development. **NRPC funded** a Corrective Action Plan at the Highgate Village Core where Cathedral Square plans to develop 30 units of senior housing. The Village of Swanton is redeveloping the former Carroll Concrete property with the support from NRPC's brownfields program.



# Clean Water



In FY25, NRPC's work to improve water quality benefited **19** communities.

NRPC serves as the Clean Water Service Provider (CWSP) for the Missisquoi and Lamoille Basins.

In that role, we help Vermont move closer to achieving phosphorous reduction targets.

Targets were established in the "Lake Champlain TMDL" submitted to the U.S. Environmental Protection Agency.



NRPC contracted for \$2.09 million in projects in 2025. Since 2023, 58 projects, including studies, have been funded. If all projects are implemented, annual phosphorus releases would be reduced by over 600 kilograms.



# Planning & Zoning

NRPC provided **22** municipalities with planning and bylaw assistance.

Maintaining clear and up-to-date plans and bylaws creates a strong, guiding vision for communities. This clear vision ensures smooth permitting at state and local levels.

NRPC serves as zoning administrator for two municipalities.



The Town of St. Albans Transit Oriented Development Master Plan will set a vision for the growth areas north and south of St. Albans City.

**7 municipalities** received assistance updating their local plans or development regulations.

# GRAND ISLE ROADS



## Mapping

All 23 communities received mapping services from NRPC in FY25, assisting in a variety of municipal operations and plans.

Mapping and data analysis is a key component to planning, enabling a deeper understanding of the various dimensions that RPCs assist communities in.



NRPC provides all communities with annual updates to road atlases, used by public works and emergency/rescue services

NRPC's Housing Dashboard provides up to date information on new homes built in the region

<https://nrpcvt.maps.arcgis.com/apps/dashboards/c96fc23dc59249af93b8af4c0b0ed267>



# Transportation Planning

NRPC provided **23** municipalities with technical assistance in transportation, including:

- ✓ TRAFFIC COUNTS
- ✓ CULVERT AND ROAD EROSION INVENTORIES
- ✓ MUNICIPAL PROJECT MANAGEMENT
- ✓ A VARIETY OF OTHER SUPPORT SERVICES

RPCs help coordinate the Transportation Planning Initiative (TPI), a statewide initiative for public involvement in improvements to Vermont's transportation system and for the development of region-wide transportation plans.



NRPC worked closely with VTrans Rail Trail Program to secure funding and complete a full culvert and bridge inventory along approximately 26 miles of the Lamoille Valley Rail Trail; from Swanton to Cambridge.

NRPC is coordinating an intersection analysis for Route 207 and Bushey Road.



# Emergency Planning & Response

With technical assistance from NRPC, **23** municipalities were able to mitigate disasters and improve their emergency preparedness in 2025.

NRPC serves in the state emergency operations center in times of disaster and supports communities with

- **Heat response** planning efforts
- **Continuity of operations** planning efforts
- **NFIP** re-mapping processes
- **Local Hazard Mitigation Plan** development assistance



NRPC received a grant from the Economic Development Administration to complete flood plain modeling for the Lamoille River basin from Hardwick to Georgia. The model identified areas at risk and provided potential solutions to mitigation flood risks.

# Energy Planning & Implementation

With assistance from NRPC, **3** communities drafted new energy plans and **12** municipalities received assistance with energy plans or projects.

With a focus on sustainability and affordability, Vermont communities face significant roadblocks and opportunities in the clean energy transition. NRPC assists communities by helping develop comprehensive local and regional energy plans that integrate land use, transportation, natural resources, and energy project implementation.



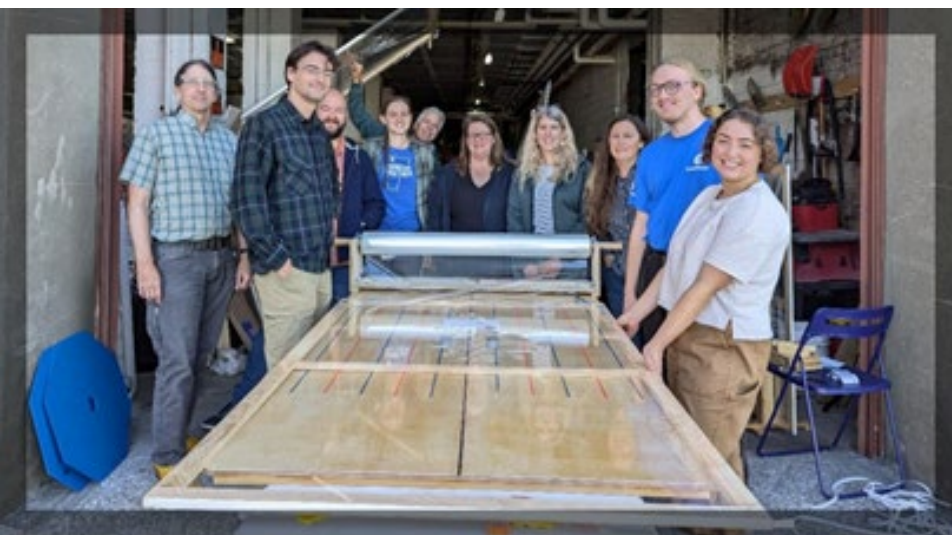
Community Builds = Building Community



Customers Participate in Making Inserts

No special skills required  
All jobs taught on site

Many different jobs available for different skill and mobility levels

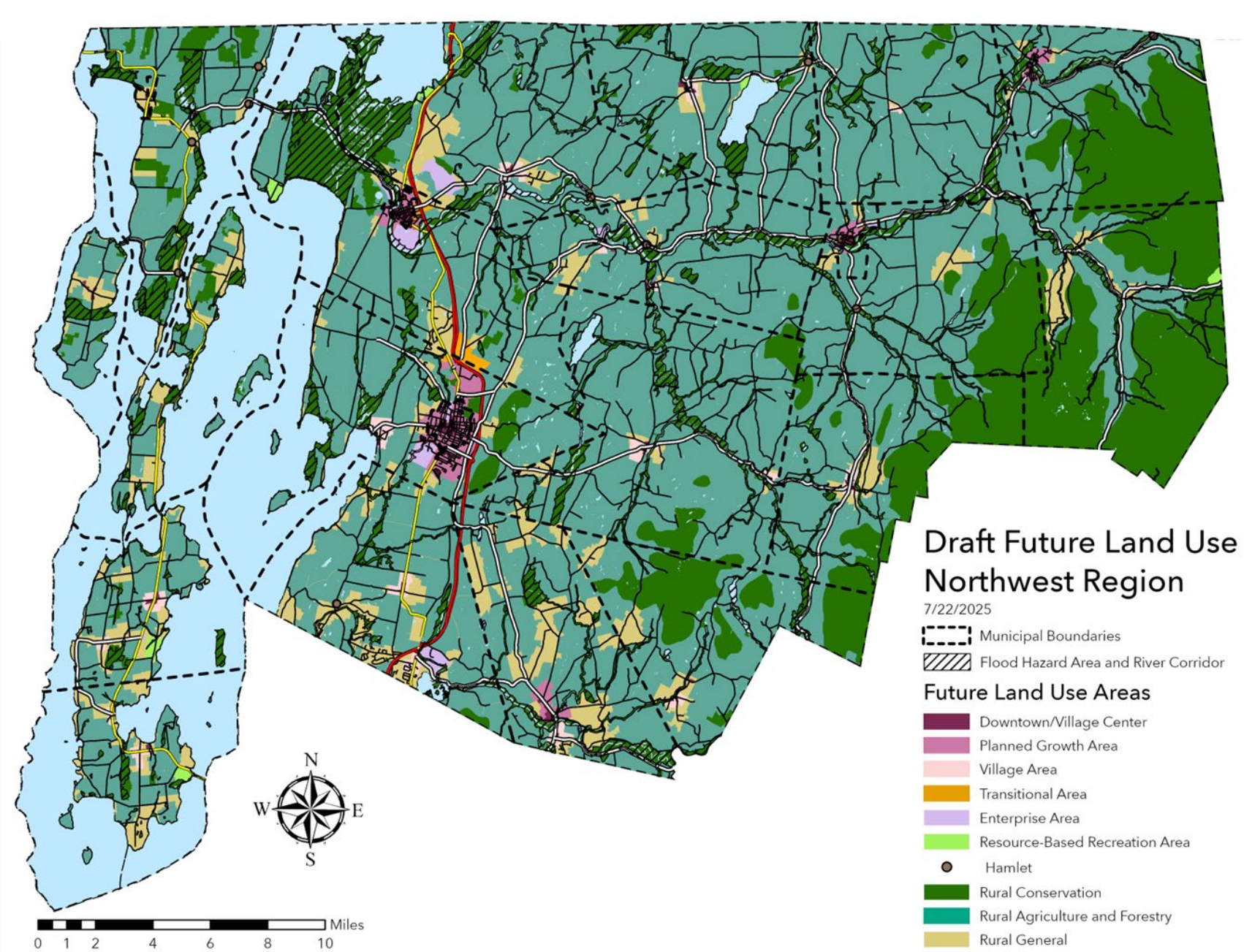


With St. Albans City, organized second annual WindowDressers build for the region, providing insulating window inserts to residents including free inserts for low-income residents.

# Regional Planning

NRPC coordinates community plans with regional plans and provides key insights for communities through regional studies.

This region-wide perspective enables a broader understanding of the trends and regional dynamics that drive planning and investment decisions.



**FY25  
Project  
Feature**

NRPC attended over 50 meetings with local boards and held 15 outreach events to develop a new draft regional plan. The plan has maps which will help determine Act 250 jurisdiction and eligibility for state incentive programs.

# Partnerships

NRPC support numerous collaborative efforts around economic development, prevention, public safety, energy, and other issues as needed with our municipalities.

- Northwest Vermont Regional Foundation
- Northern Vermont Economic Development District
- Communications Union District
- Missisquoi Valley Rail Trail
- Lamoille Valley Rail Trail
- CVOEO – Healthy Roots



NRPC and the Northwest VT Rail Trail Council launched a new interactive map for the Missisquoi and the Lamoille Valley Rail Trails. The interactive map features Trail Friendly Businesses in towns that border the trails, and amenities along the trail. To check out the new interactive map, visit <https://www.mvtrail.org/>.

# Board of Commissioners

## LIST OF MEMBERS

**Alburgh Town** – Danielle Choiniere & Alex McCracken

**Alburgh Village** – vacant seats

**Bakersfield** – William Irwin & Linda McCall

**Berkshire** – Claude Charron & Joshua Grims

**Enosburg Falls** – Jesse Woods & vacant seat

**Enosburgh** – James Ouellette & Jesse Woods

**Fairfax** – Mike Bishop & Barbara Murphy

**Fairfield** – Julia Callan & Dr. Chuck Verderber

**Fletcher** – Michelle Frennier & Lori Ruple

**Franklin** – Yvon Dandurand & Wesley Kempton

**Georgia** – Carl Rosenquist & Kirk Waite

**Grand Isle** – Howard Demars & Barclay Morris

**Highgate** – Anna Comiskey & Jack Pelkey

**Isle La Motte** – Mary Catherine Graziano & Sylvia Jensen

**Montgomery** – Leanne Barnard & Mark Brouillette

**North Hero** – Andy Alling & vacant seat

**Richford** – Marissa Tessier & vacant seat

**St. Albans City** – Elisabeth Nance & Chip Sawyer

**St. Albans Town** – Marietta Scholten & Megan Sherlund

**Sheldon** – Jeffrey Kane & Matthew Stebbins

**South Hero** – Bob Buermann & Peter Zamore

**Swanton Town** – Nicholas Brosseau & Nicole Draper

**Swanton Village** – Heidi Britch-Valenta & Damon Broderick

**Franklin County Youth Member** – vacant seat

**Grand Isle County Youth Member** – Amelia Demars

# Thank you!

Andy Alling	5 years
Bob Buermann	15 years
Emily Klofft	5 years

In Honorable Memory: Mike Curtis and Al Voegele

## Staff

### NRPC STAFF

**Catherine Dimitruk** | *Executive Director* | [email](#) | ext. 112

**Bethany Remmers** | *Assistant Director* | [email](#) | ext. 118

**Amy Adams** | *Office Administrator* | [email](#) | ext. 110

**Shaun Coleman** | *Senior Planner* | [email](#) | ext. 113

**Greta Brunswick** | *Senior Planner* | [email](#) | ext. 116

**Dean Pierce** | *Senior Planner* | [email](#) | ext. 124

**Emily Klofft** | *Regional Planner* | [email](#) | ext. 122

**Luke Slomba** | *Regional Planner* | [email](#) | ext. 131

**Nora Brown** | *Regional Planner* | [email](#) | ext. 130

**Kyle Grenier** | *Transportation Planner* | [email](#) | ext. 123

**Marlena Valenta** | *Energy and Climate Planner* | [email](#) | ext. 125

**Danielle Turin** | *Assistant Planner & Zoning Administrator* | [email](#) | ext. 134

**Emily Adams** | *GIS Technician* | [email](#) | ext. 117



For more information, visit:

[www.nrpcvt.com](http://www.nrpcvt.com)